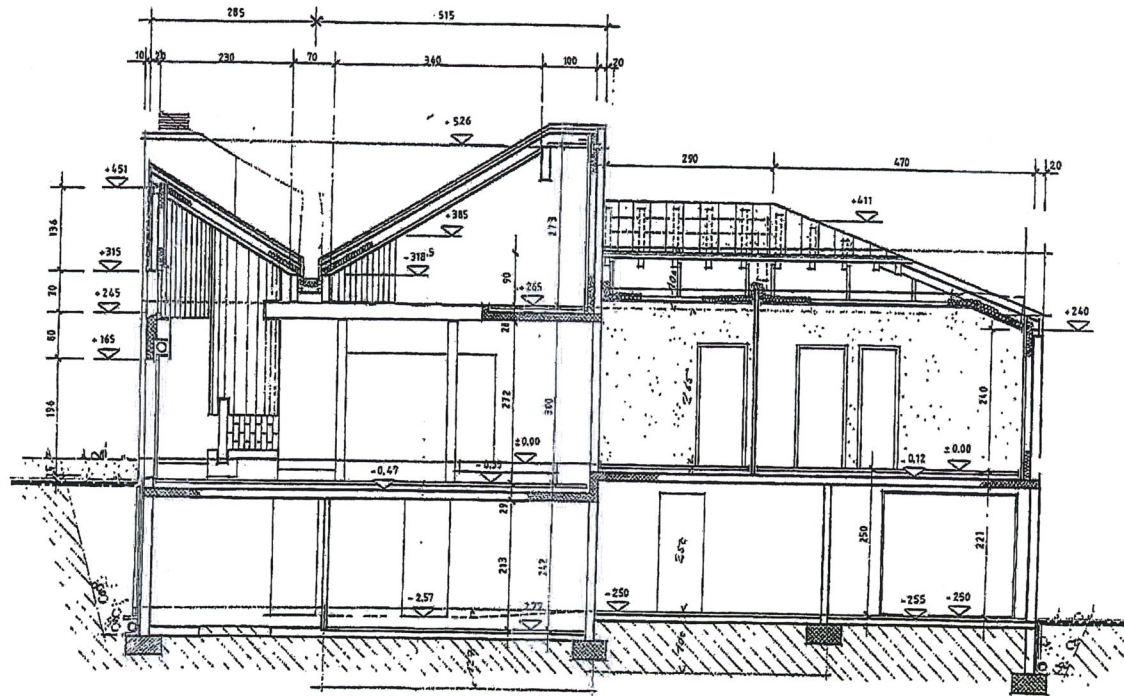


VILLA CONTEMPORAINE

**COUPE A-A**  
RESIDENCE VINSEAU

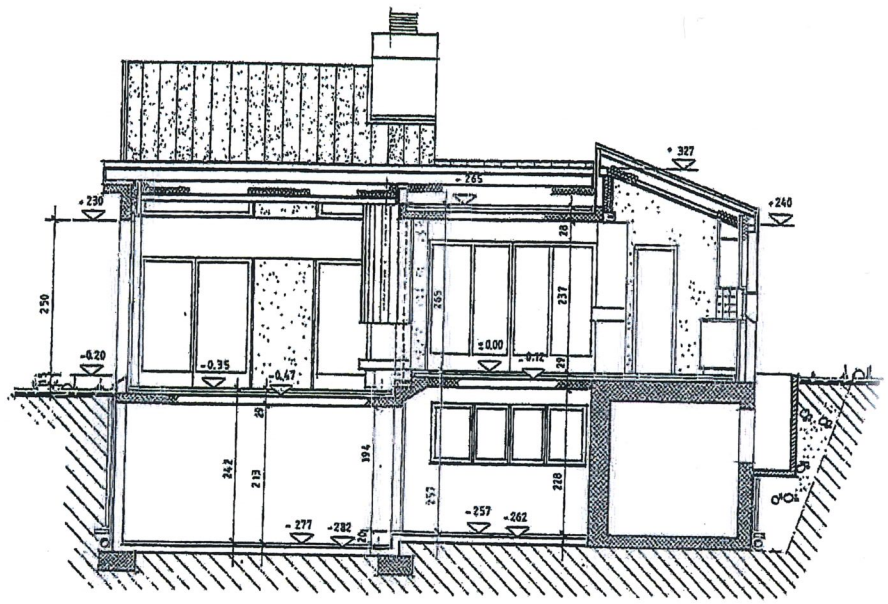


COUPE A - A

# COUPE B-B

RESIDENCE VINSEAU

roland vasseaux architecte 1928 branson/fully		S.I. EN FORMATION VINSEAU A BRANSON / FULLY	
S.I.F.V. 104	SURF: 0.24	CONSTRUCTION D'UNE VILLA COUPE/ A-A ET COUPE B-B	
DESS: RV2	DATE: 18.11.80	MOD: 19.5.81	ECH: '1/50

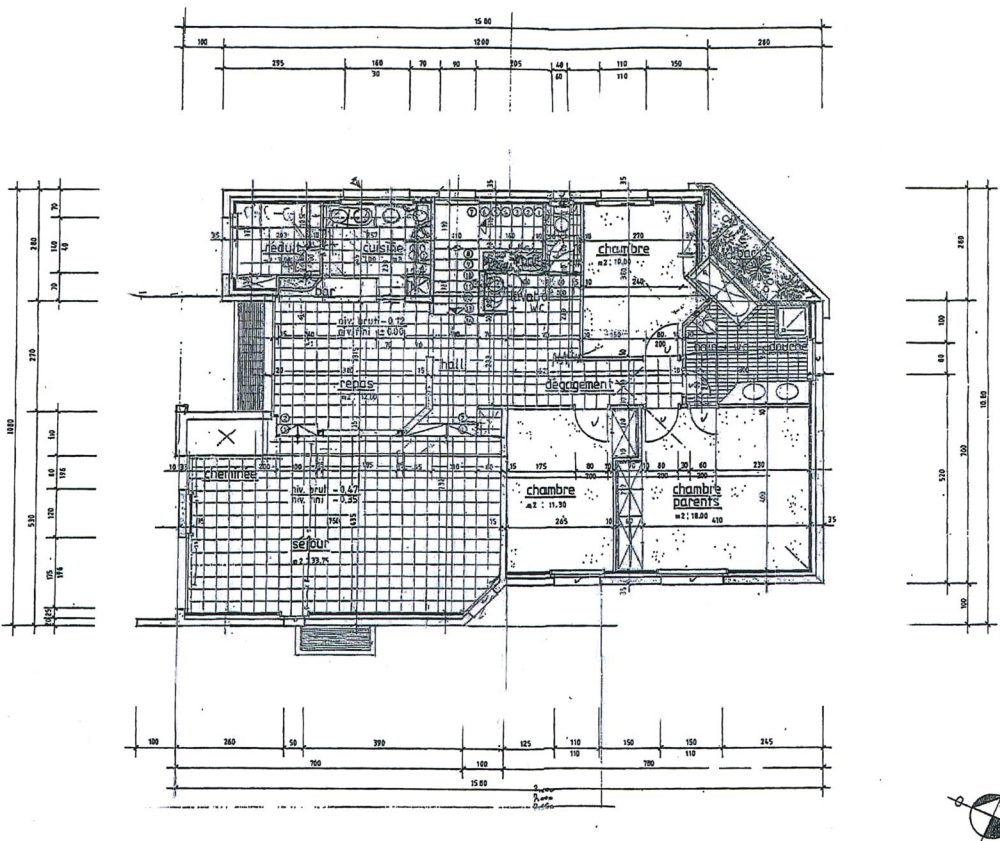


COUPE B-B



# PLANS

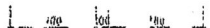
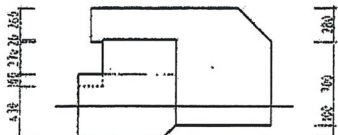
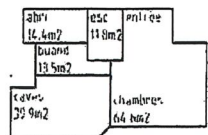
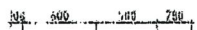
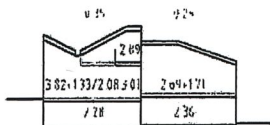
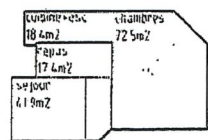
RESIDENCE VINSEAU - REZ SUPERIEUR





# CUBE

RESIDENCE VINSEAU



**REMARQUES**

Sans aménagements extérieurs  
Avec 3 Garages au nord de la propriété

FULLY - CHEMIN DU RHONE 22

944.5

ESTIMATION	M2	CUBE SIA	POINTS	FR/M3	VALEUR	
<b>REZ-INFERIEUR</b>						
Abrt pc	14.40 x 2.36 =	34	36.00 + 6%	360 =	12'200	
Buanderie	13.50 x 2.36 =	32	36.00 + 6%	360 =	11'500	
Caves	39.90 x 2.28 =	91	36.00 + 8%	367 =	33'400	
Chambres + entrée	64.60 x 2.36 =	152	72.00 + 6%	721 =	109'900	
Cage d'escaliers	11.80 x 2.36 =	28	72.00 + 6%	721 =	20'100	
Cuisine + escalier	18.40 x 3.13 =	58	72.00	680 =	39'100	
Chambres	28.40 x 3.56 =	101	72.00	680 =	69'500	
Repas	44.10 x 3.26 =	144	72.00	680 =	97'800	
Séjour	17.40 x 2.66 =	46	72.00	680 =	31'500	
	15.10 x 4.49 =	68	72.00	680 =	46'100	
	16.20 x 4.61 =	75	72.00	680 =	50'800	
	10.60 x 3.01 =	32	72.00	680 =	21'700	
<b>COMBLES</b>						
Mezzanine	2.40 x 0.96 =	2	58.00	548 =	1'300	
	15.00 x 1.85 =	28	58.00	548 =	15'200	
	5.80 x 2.84 =	15	58.00	548 =	8'400	
	4.80 x 2.89 =	14	58.00	548 =	7'800	
Tolitures	90.90 x 1.06 =	96.14 x 0.25 =	24	106.00	1001 =	24'100
	69.30 x 1.14 =	67.84 x 0.35 =	24	90.00	850 =	20'200
Arrondi						
<b>CUBE SIA 416</b>		<b>970 M3</b>		<b>683</b>	<b>662'000</b>	
DIVERS POSTES ARCHITECTURE	10%				183'000	
					85'000	

**VALEUR D'ASSURANCE** 102 359 Fr. 930'000

Guy Rouvinez

11.06.2007