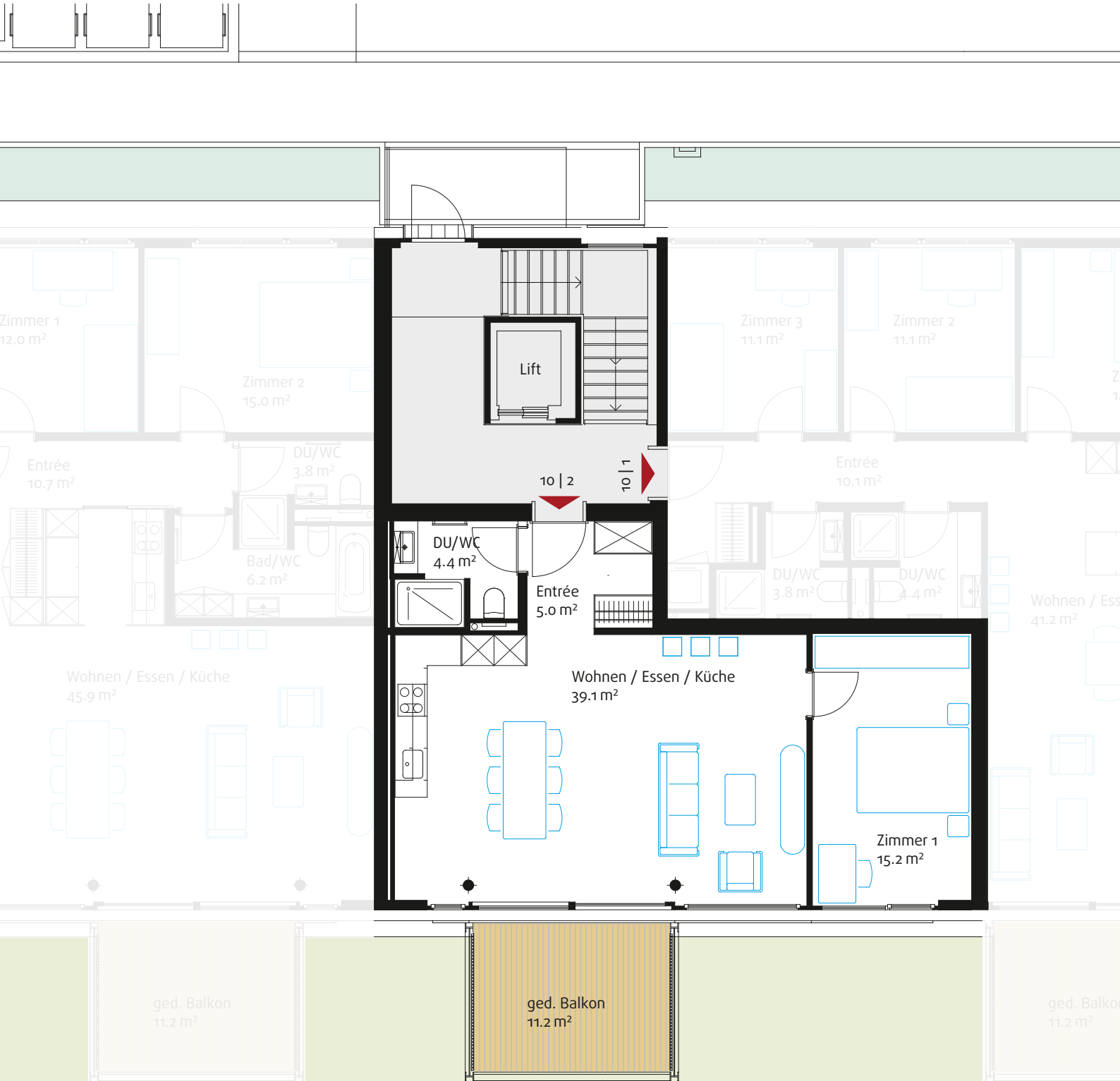
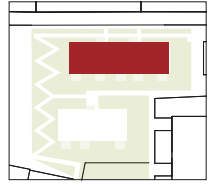


# Gebäude 10 | Grächwilstrasse 8a, Ebene 3, 10 | 2 2½-Zimmer-Wohnung

63.7 m<sup>2</sup> Bruttowohnfläche • Balkon 11.2 m<sup>2</sup>

Ebene	10   13			10   6			10   5		
5									
4	10   12	10   11		10   10	10   4		10   3		
3	10   9	10   8		10   7	10   2		10   1		
2	Keller								
1	Einstellhalle								



1:100

