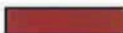






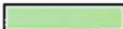


AVENUE DU LEMAN 87 - 89 A LAUSANNE
CONSTRUCTION DE 2 IMMEUBLES AVEC PARKING SOUTERRAIN

LOT N° 6

APPARTEMENT DUPLEX 4½ PIECES - 3EME ETAGE ET ATTIQUE

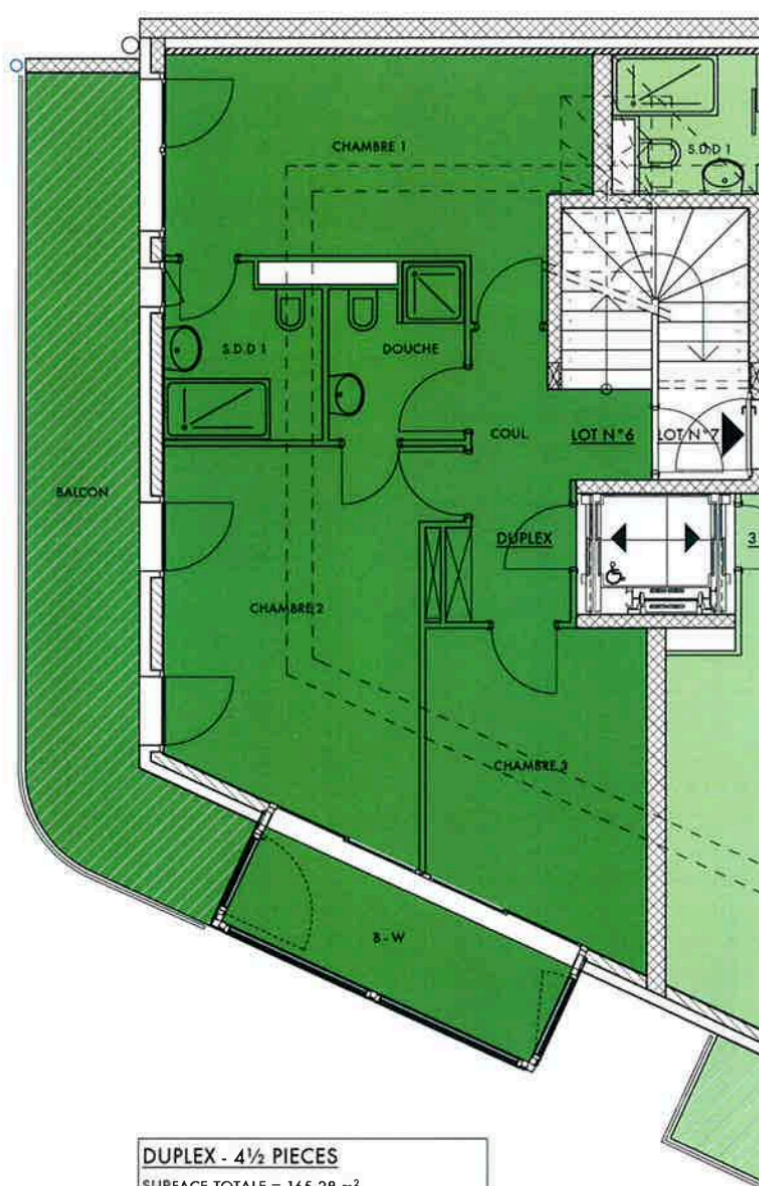
Ech: 1/100

-  LOT N°0
-  LOT N°1
-  LOT N°2
-  LOT N°3
-  LOT N°4
-  LOT N°5
-  LOT N°6 ff 5767 - 7
-  LOT N°7

3EME ETAGE BATIMENT A
ECH. 1/500



3EME ETAGE
LOT N°6 (rez)
ECH. 1/100



DUPLEX - 4½ PIECES
SURFACE TOTALE = 165.28 m²
DONT : BOW-WINDOW 7.40 m² à 100%
BALCON ET TERRASSE 60.83 m² à 50%

TARDIN ARCHITECTES SA

Nicolas Tardin, Architecte EPFL-SIA
1, Place Neuve - 1009 Pully
Tél: 021/634.30.19 - Fax: 021/634.31.43
info@tardin.ch - www.tardin.ch



Christian Tardin

f. w. tardin

Pully, le 12 septembre 2011