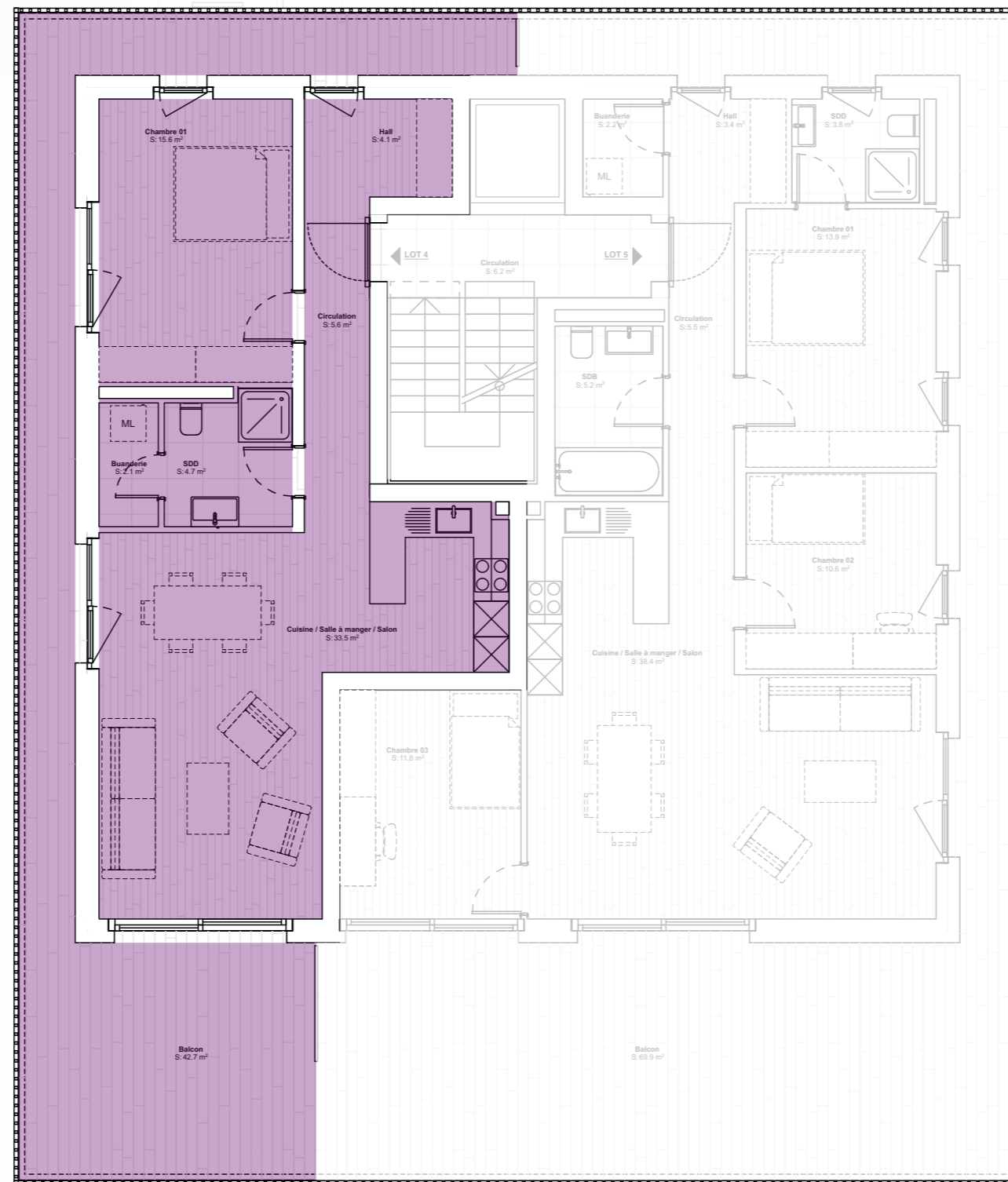
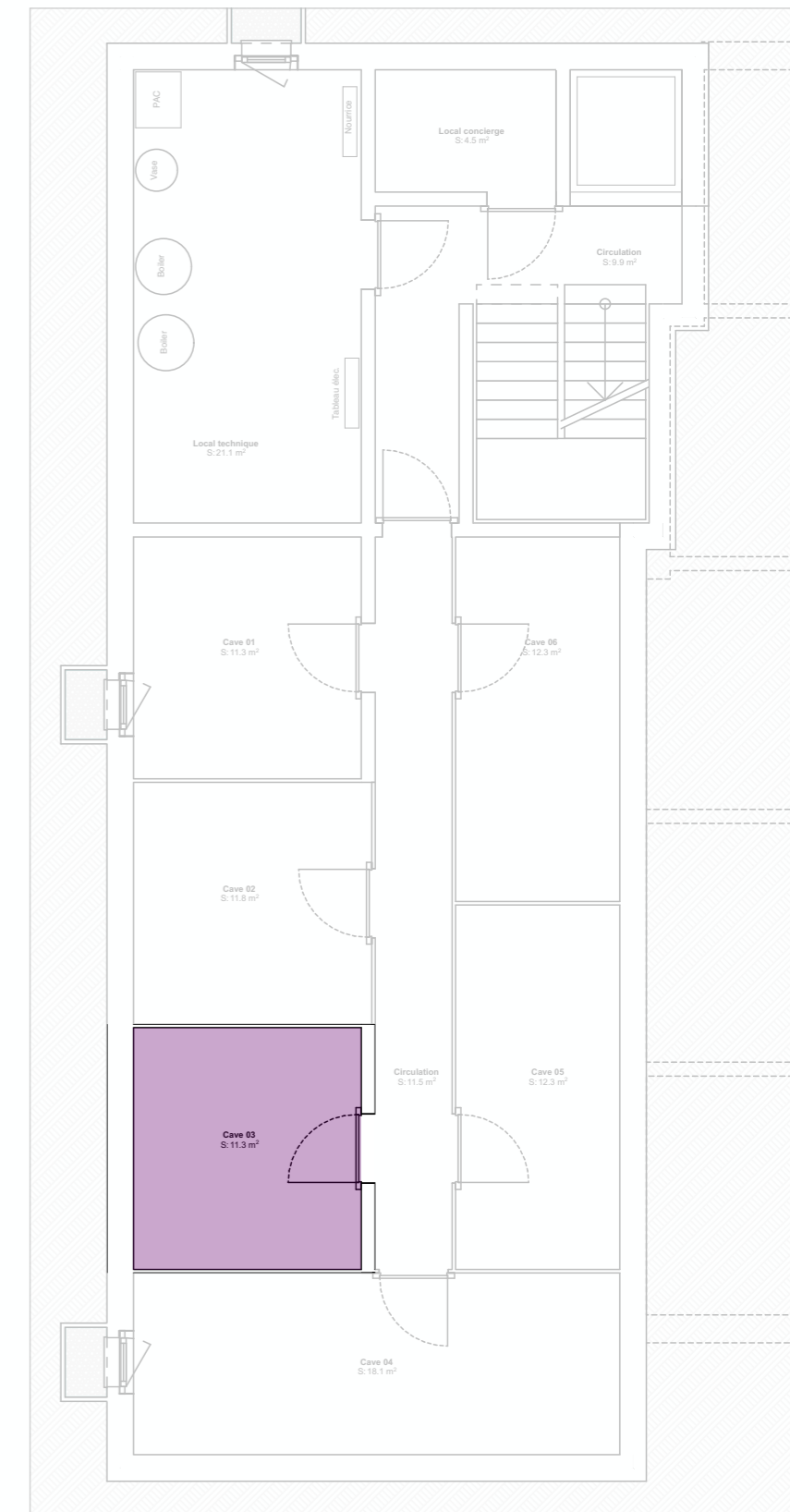


Coupe BB - 1:200



Etage 2 - 1:100



Sous-sol - 1:100

Récapitulatif des surfaces

| | |
|--------------------------------|-----------------------------|
| Lot 4 | |
| Logement | = 64.4 m ² |
| Surface habitable | = 64.4 m² |
| Cave | = 11.3 m ² |
| Buanderie | = 2.3 m ² |
| Surfaces non-habitables | = 13.6 m² |
| Total utile | = 78.0 m² |
| Balcon | = 42.7 m ² |

ADRESSE

Chemin des Bulesse 70 - 1814 La Tour-de-Peilz