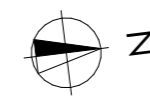


Récapitulatif des surfaces

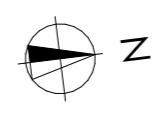
Lot 2	
Sous-sol habitable	= 2.2 m ²
Sous-sol utile	= 22.2 m ²
Total hab.	= 168.5 m²
Total utile	= 208.9 m²
Lot 3	
Sous-sol habitable	= 2.2 m ²
Sous-sol utile	= 32.1 m ²
Total hab.	= 164.1 m²
Total utile	= 214.0 m²
Lot 4	
Sous-sol habitable	= 2.2 m ²
Sous-sol utile	= 25.2 m ²
Total hab.	= 175.6 m²
Total utile	= 206.5 m²

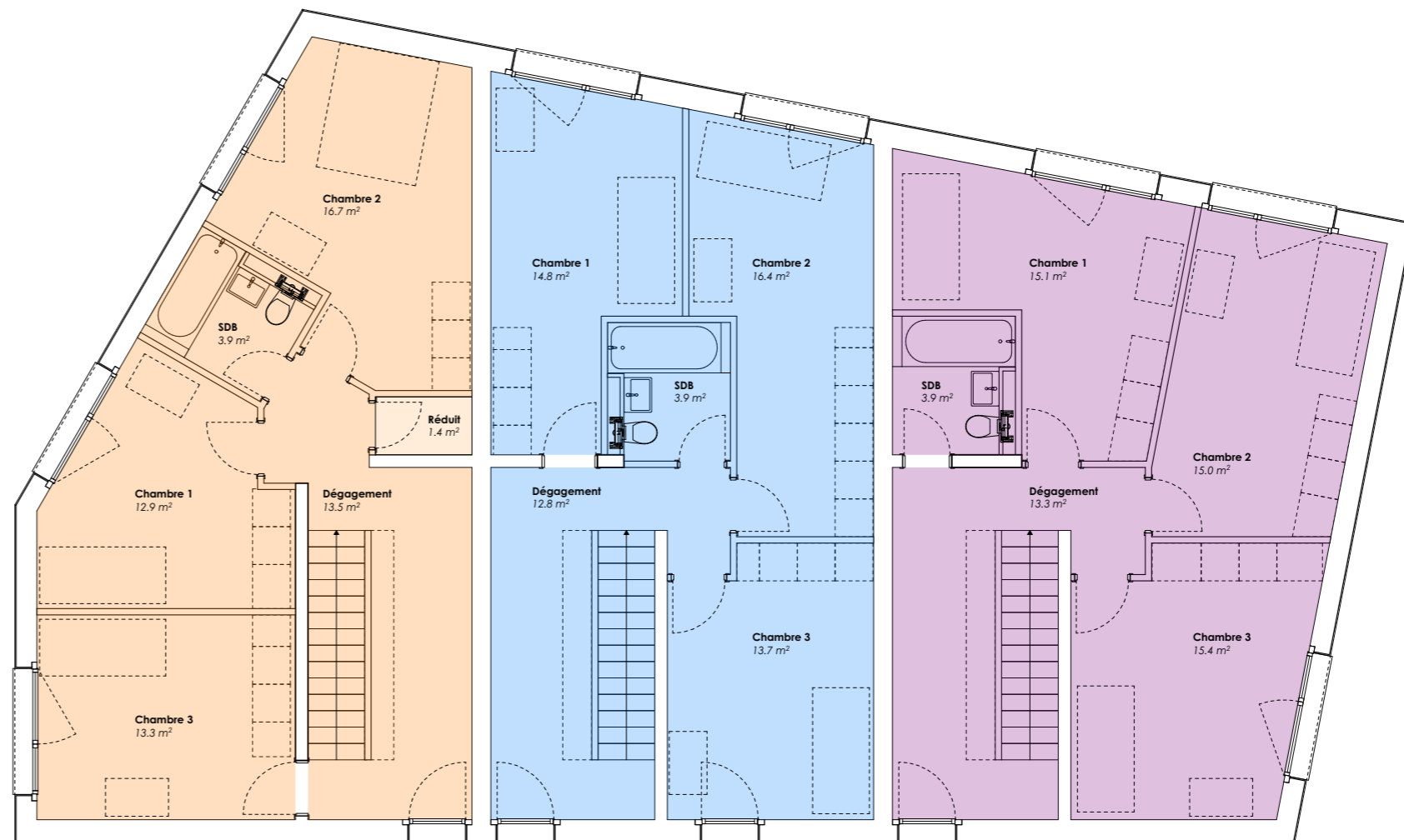




Récapitulatif des surfaces

Lot 2	Rez habitable = 67.4 m ²
	Rez utile = 67.4 m ²
	Total hab. = 168.5 m²
	Total utile = 208.9 m²
Lot 3	Rez habitable = 67.5 m ²
	Rez utile = 67.5 m ²
	Total hab. = 164.1 m²
	Total utile = 214.0 m²
Lot 4	Rez habitable = 68.5 m ²
	Rez utile = 68.5 m ²
	Total hab. = 175.6 m²
	Total utile = 206.5 m²





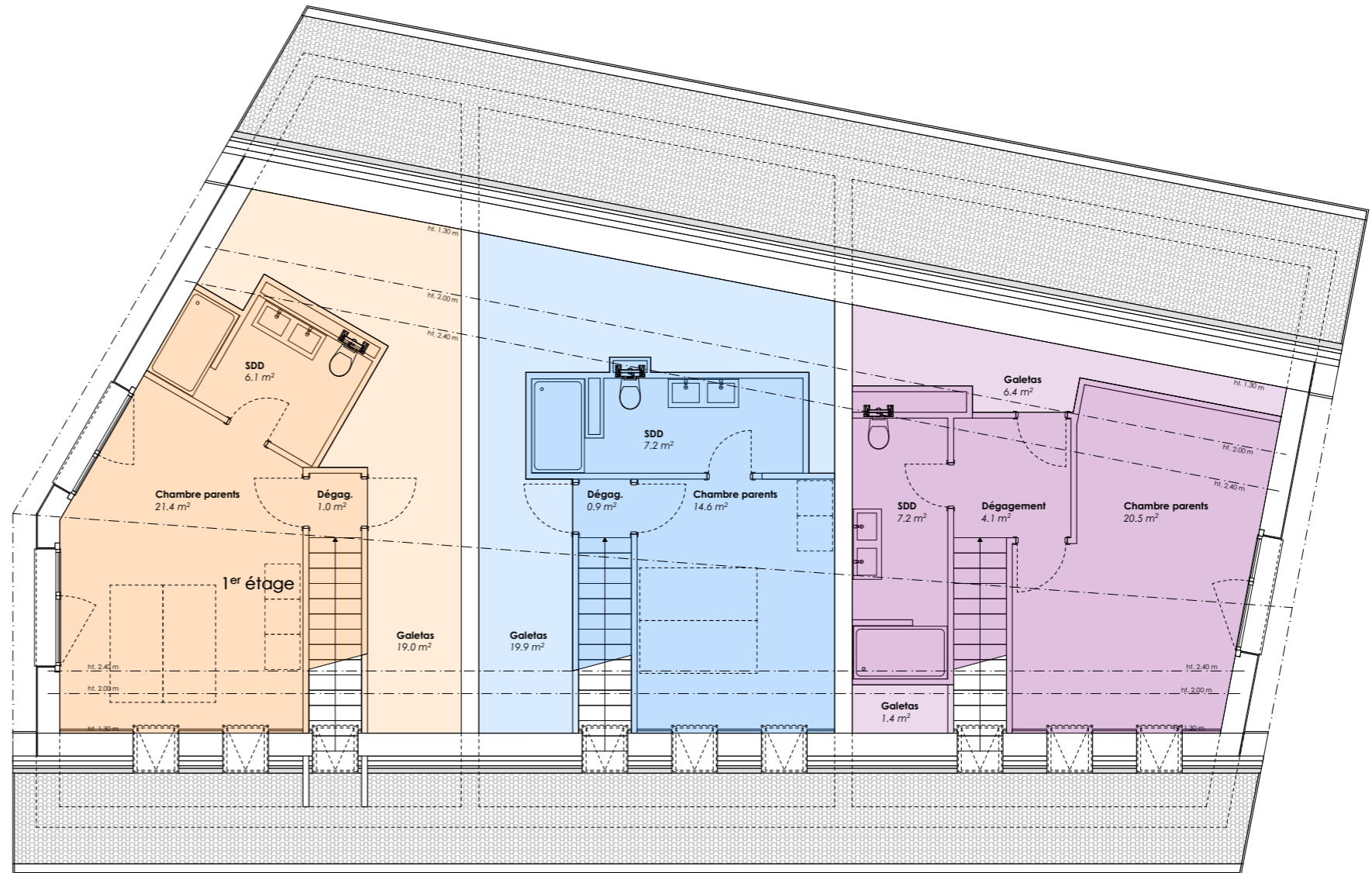
Récapitulatif des surfaces

Lot 2 ■
 1^{er} étage habitable = 65.9 m²
 1^{er} étage utile = 67.3 m²
Total hab. = 168.5 m²
Total utile = 208.9 m²

Lot 3 ■
 1^{er} étage habitable = 67.2 m²
 1^{er} étage utile = 67.2 m²
Total hab. = 164.1 m²
Total utile = 214.0 m²

Lot 4 ■
 1^{er} étage habitable = 68.3 m²
 1^{er} étage utile = 68.3 m²
Total hab. = 175.6 m²
Total utile = 206.5 m²



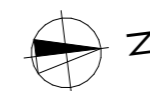


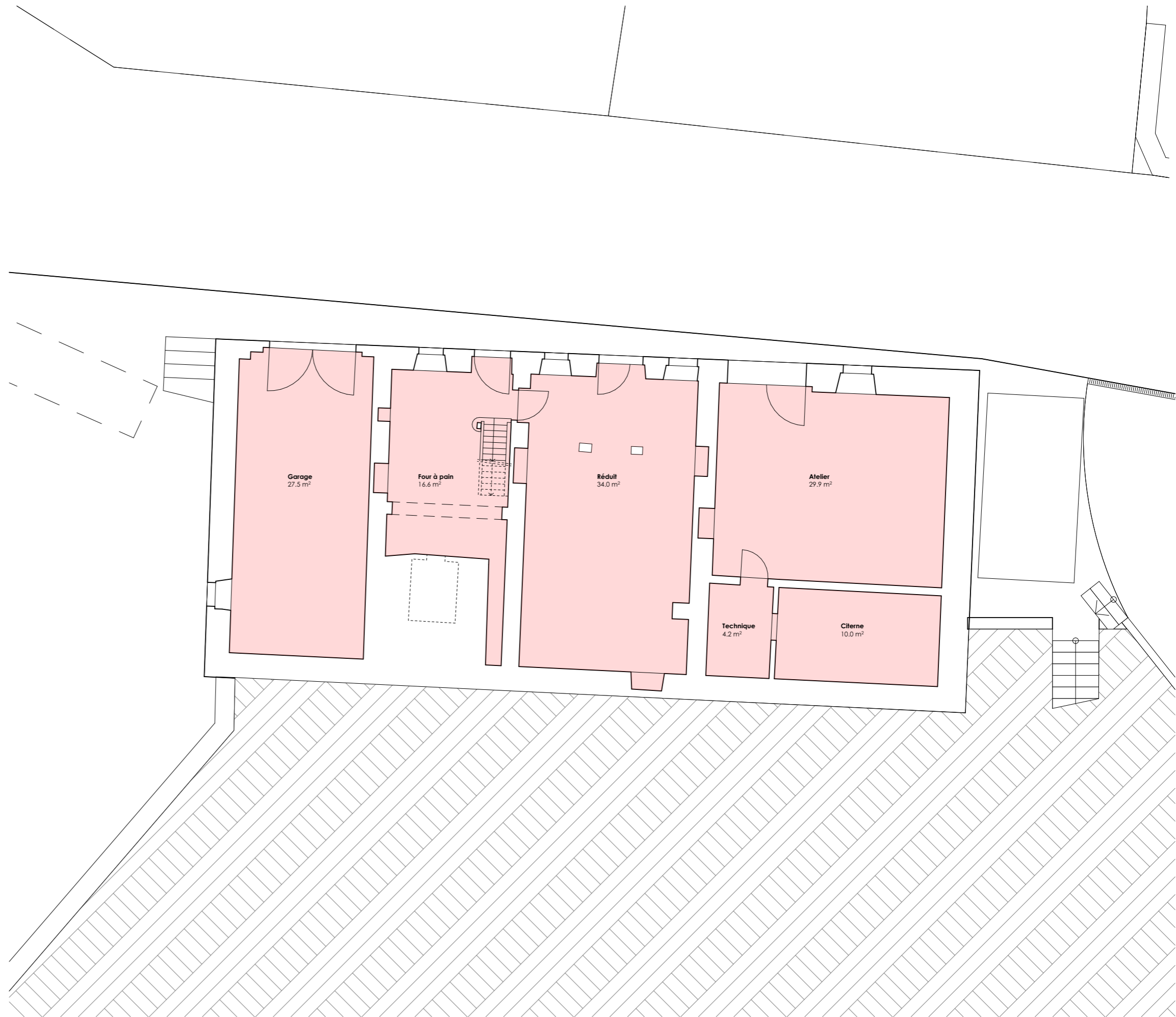
Récapitulatif des surfaces

Lot 2 ■
 Combles habitables = 33.0 m²
 Combles utiles = 52.0 m²
Total hab. = **168.5 m²**
Total utile = **208.9 m²**

Lot 3 ■
 Combles habitables = 27.2 m²
 Combles utiles = 47.2 m²
Total hab. = **164.1 m²**
Total utile = **214.0 m²**

Lot 4 ■
 Combles habitables = 36.6 m²
 Combles utiles = 44.5 m²
Total hab. = **175.6 m²**
Total utile = **206.5 m²**

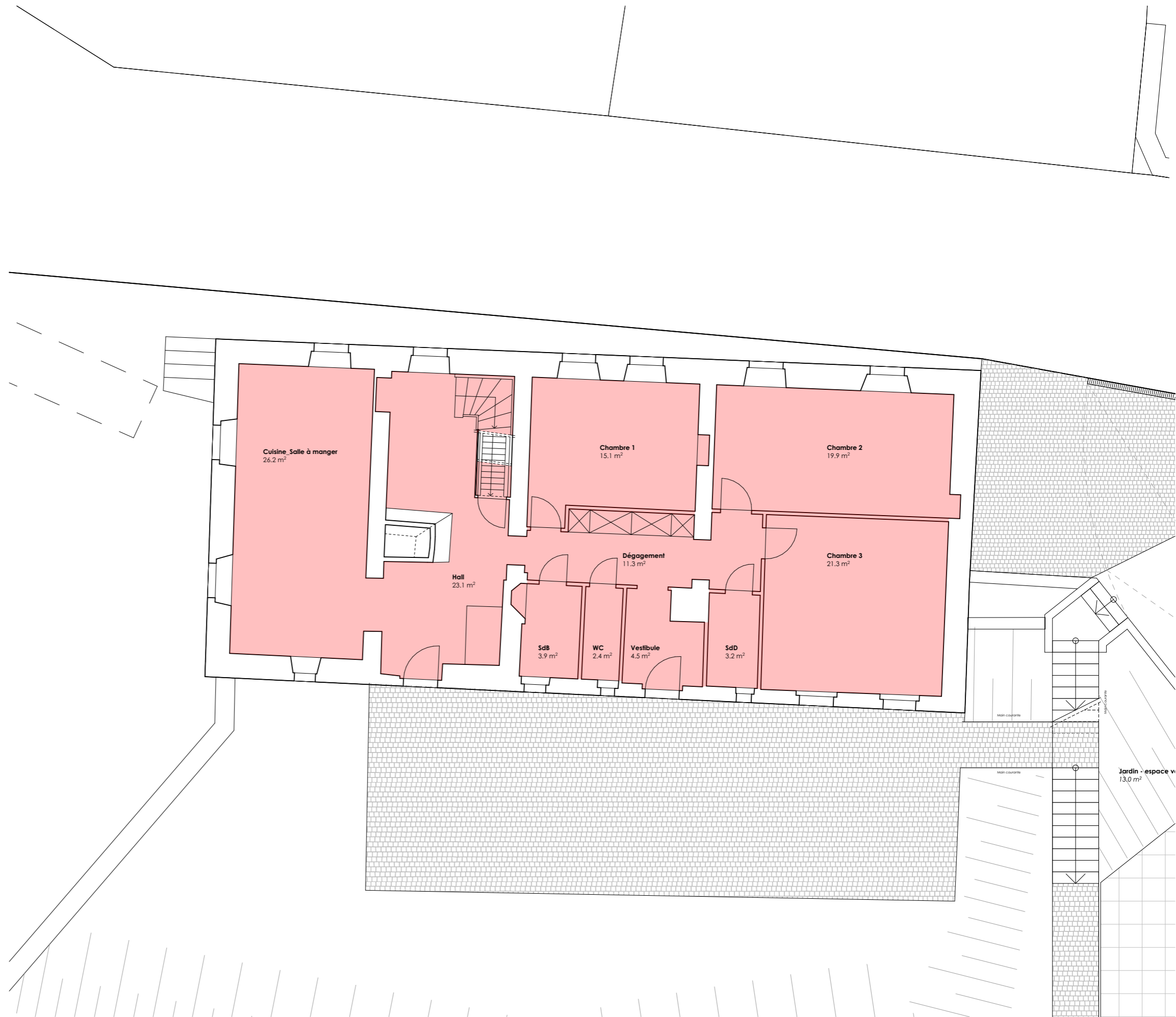




Récapitulatif des surfaces

Lot 1	■	=	—	m ²
Rez inf. habitable		=	123.1	m ²
Rez inf. utile		=	195.3	m ²
Total hab.		=	195.3	m²
Total utile		=	355.7	m²





Récapitulatif des surfaces

Lot 1	
Rez sup. habitable	= 132.5 m ²
Rez sup. utile	= 132.5 m ²
Total hab.	= 195.3 m²
Total utile	= 355.7 m²

OBJET

CONSTRUCTION DE 3 LOGEMENTS JUXTAPOSES
PARCELLE 72 | CHEMIN DU PONTET | 1433 SUCHY

Plans de vente

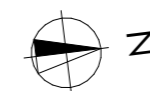
REZ-DE-CHAUSSEE SUP.

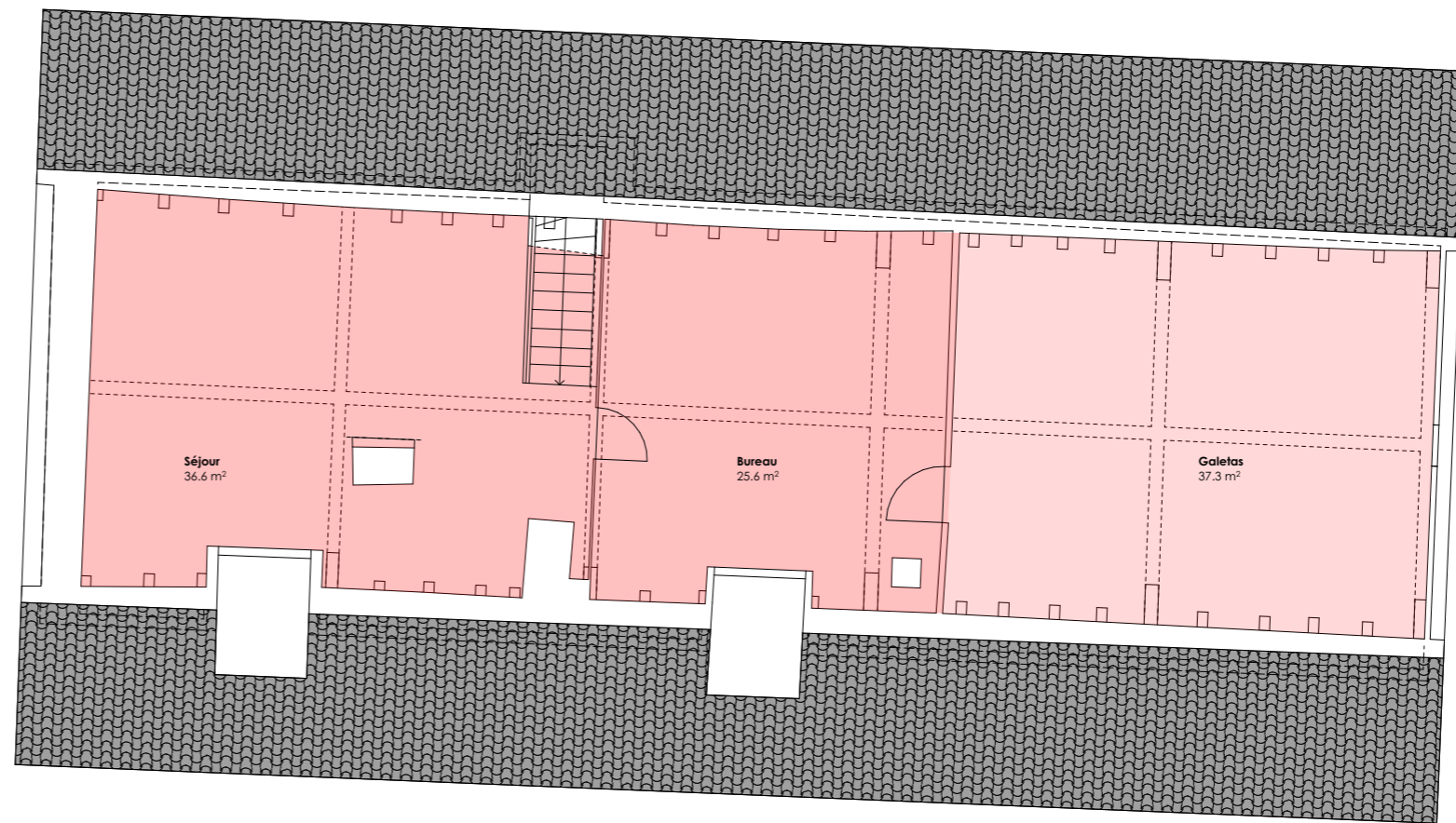
DATE

12.03.25

ECHELLE

1:100





Récapitulatif des surfaces

Lot 1	
Combles habitables	= 62.8 m ²
Combles utiles	= 100.1 m ²
Total hab.	= 195.3 m²
Total utile	= 355.7 m²

