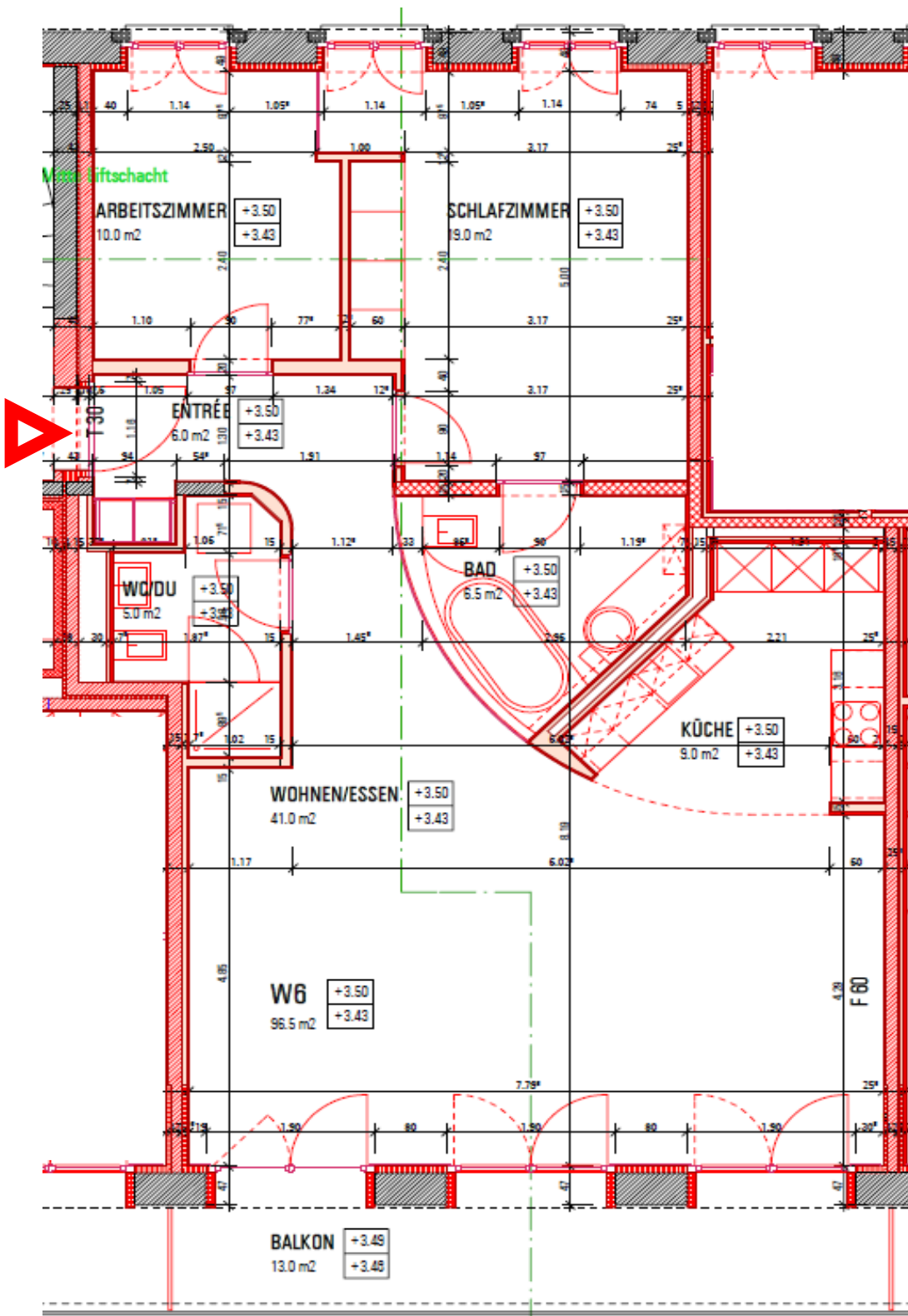


Heinrichsgasse 11, Basel
Grundriss 3.5 Zi.-Wohnung W6, 1.OG links



| Parkett | m2 | Raumhöhe | 3.12 m2 |
|----------------------|-------------|----------|---------|
| Entree | 6.0 | | |
| Wohnen/Essen | 41.0 | | |
| Küche | 9.0 | | |
| Arbeitszimmer | 10.0 | | |
| Schlafzimmer | 19.0 | | |
| total Parkett | 85.0 | | |

Heinrichsgasse 11, Basel

Schnitt 3.5 Zi.-Wohnung W6, 1.OG links

