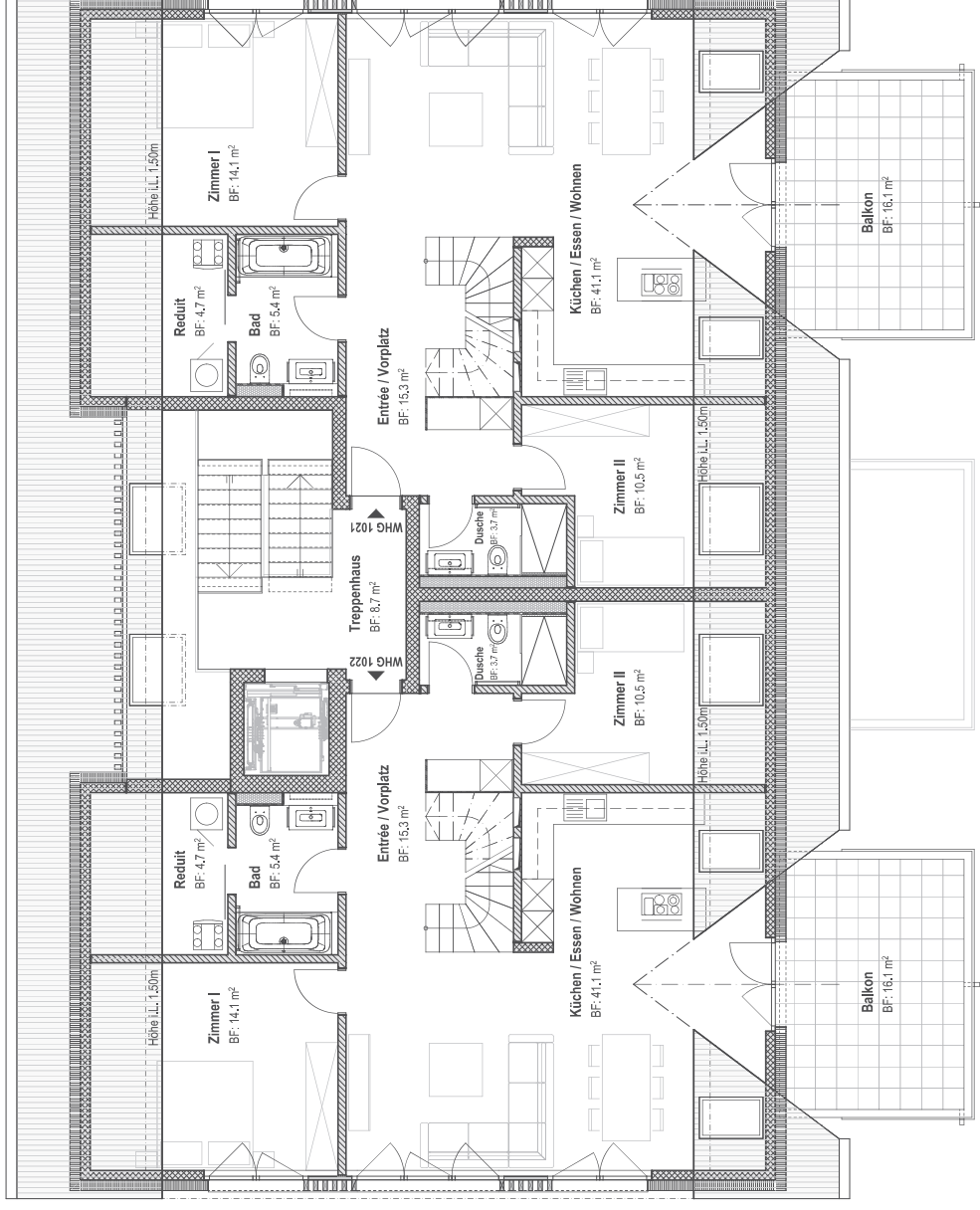


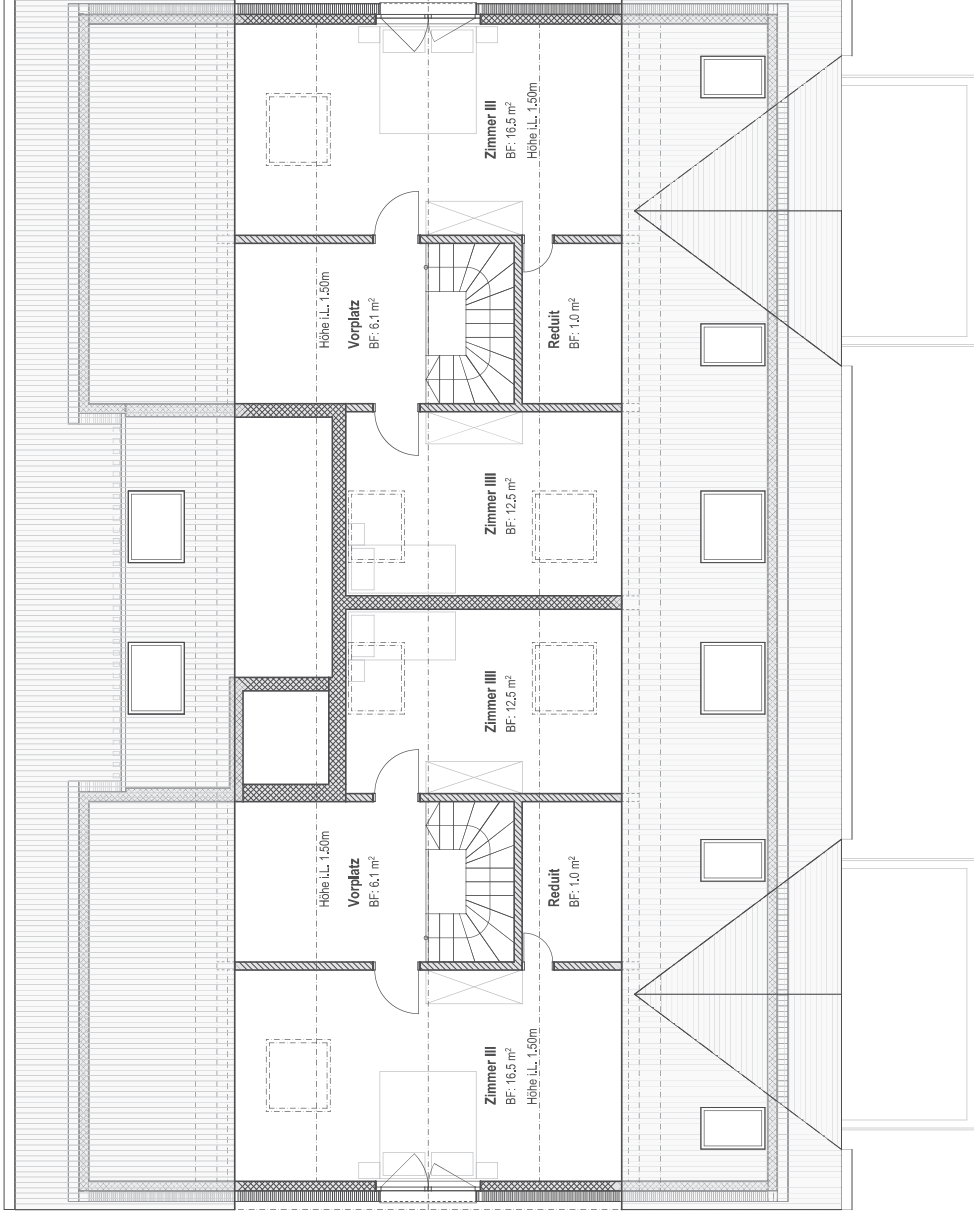
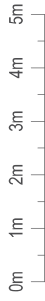
DACHGESCHOSS

Praxishaus | Vorderer Gasse 11 | 4628 Wolfwil | GB 59
AR Ackermann Immo AG | Schulstrasse 35 | 4628 Wolfwil

DELLA GIACOMA & KRUMMENACHER
ARCHITEKTEN AG

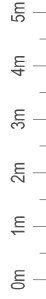
Massestab 1:100
Grösse 42,0 x 28,7
Erstellt 11.12.2025
Mittelgässstrasse 33
4616 Kappel SO
062 209 22 00



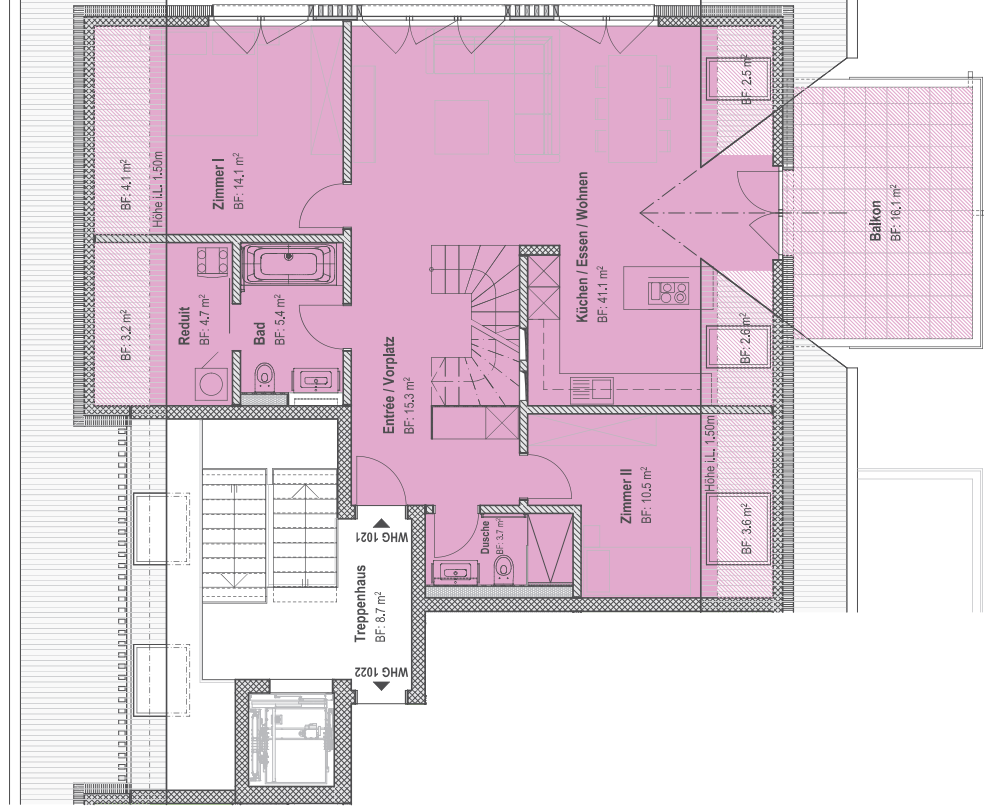


DACHGESCHOSS | WOHNUNG 1021 (5 1/2)

Praxishaus | Vorderer Gasse 11 | 4628 Wolfwil | GB 59
 AR Ackermann Immo AG | Schulstrasse 35 | 4628 Wolfwil



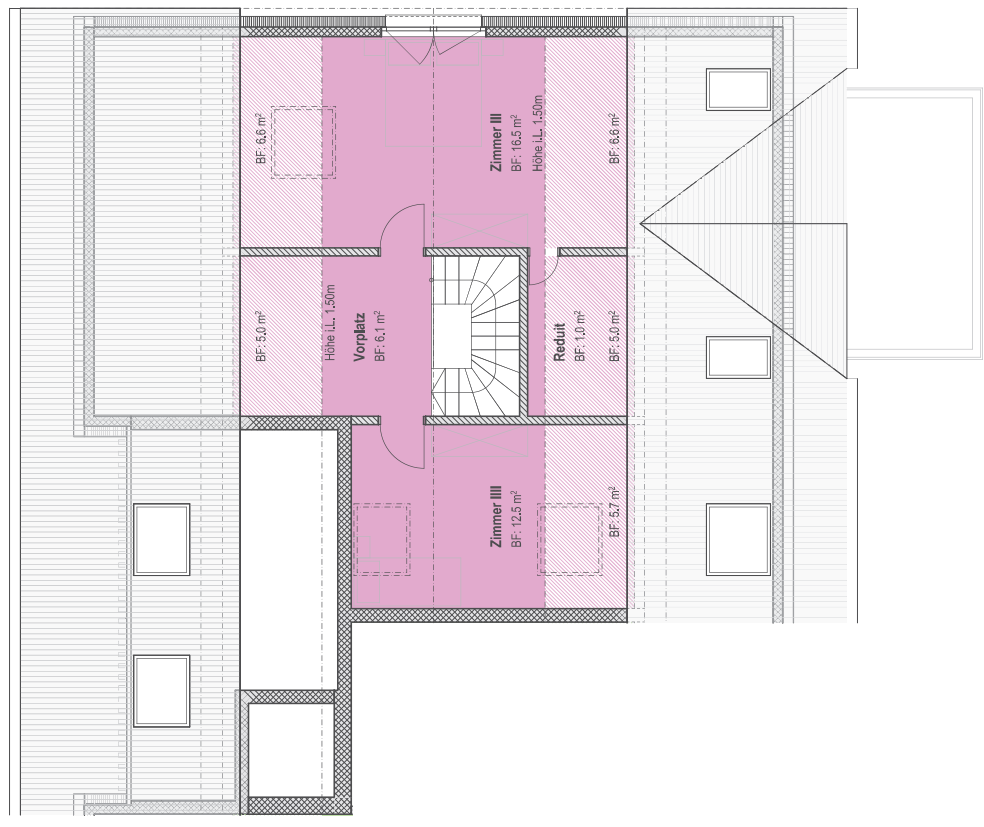
WHG 1021 (5 1/2 Zi.)
 NF 130,9 m²
 NF 44,9 m² RH = <1,50 m



Dachgeschoss

DELLA GIACOMA & KRUMMENACHER ARCHITEKTEN AG

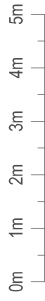
Masstab 1:100
 Mittelfeldstrasse 33
 4616 Kappel SO
 062 209 22 00



Kehlboden

DACHGESCHOSS | WOHNUNG 1022 (5 1/2 Zi.)

Praxishaus | Vorderer Gasse 11 | 4628 Wolfwil | GB 59
 AR Ackermann Immo AG | Schulstrasse 35 | 4628 Wolfwil



WHG 1022 (5 1/2 Zi.)
 NF 130,9 m²
 NF 44,9 m² RH = <1,50 m

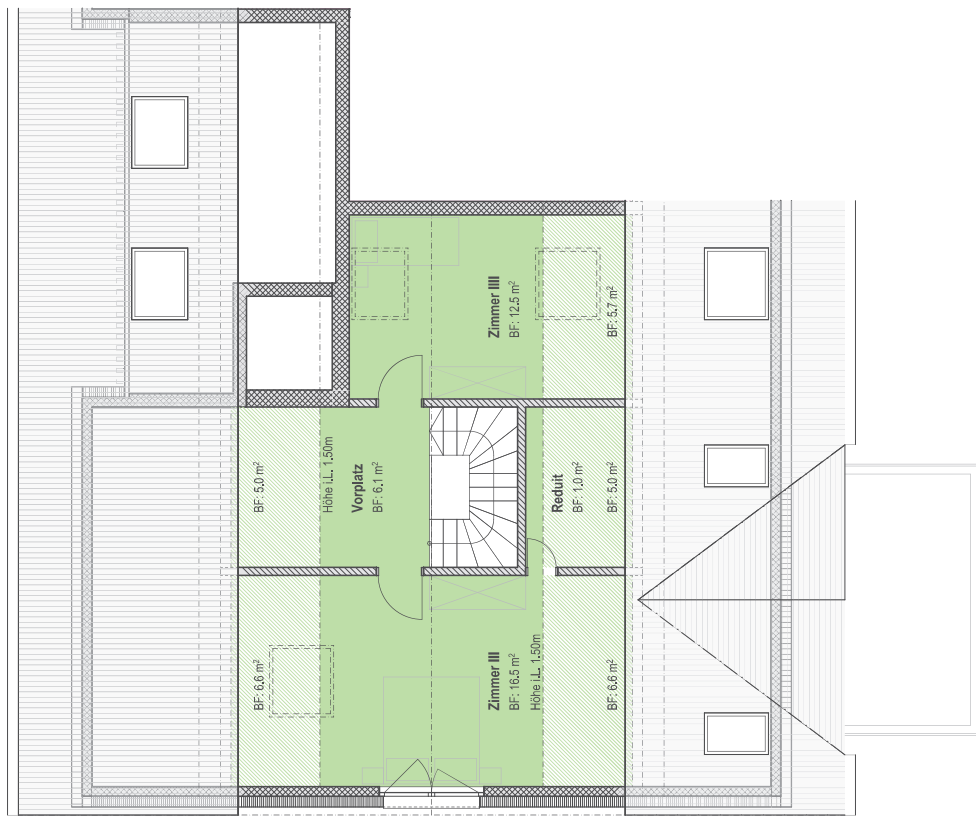


Dachgeschoss

DELLA GIACOMA & KRUMMENACHER ARCHITEKTEN AG

Masstab 1:100
 Grösse 42,0 x 28,7
 Erstellt 11.12.2025

Mittelfeldstrasse 33
 4616 Kappel SO
 062 209 22 00



Kehlboden