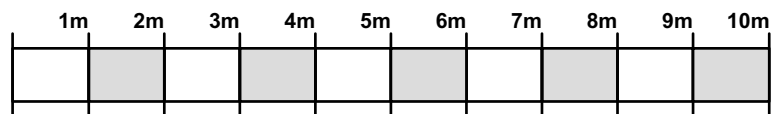
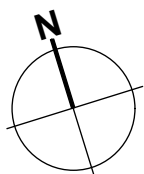
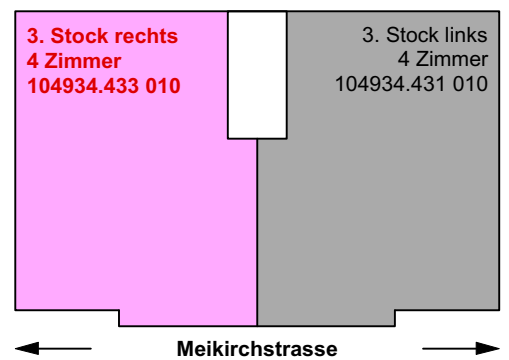
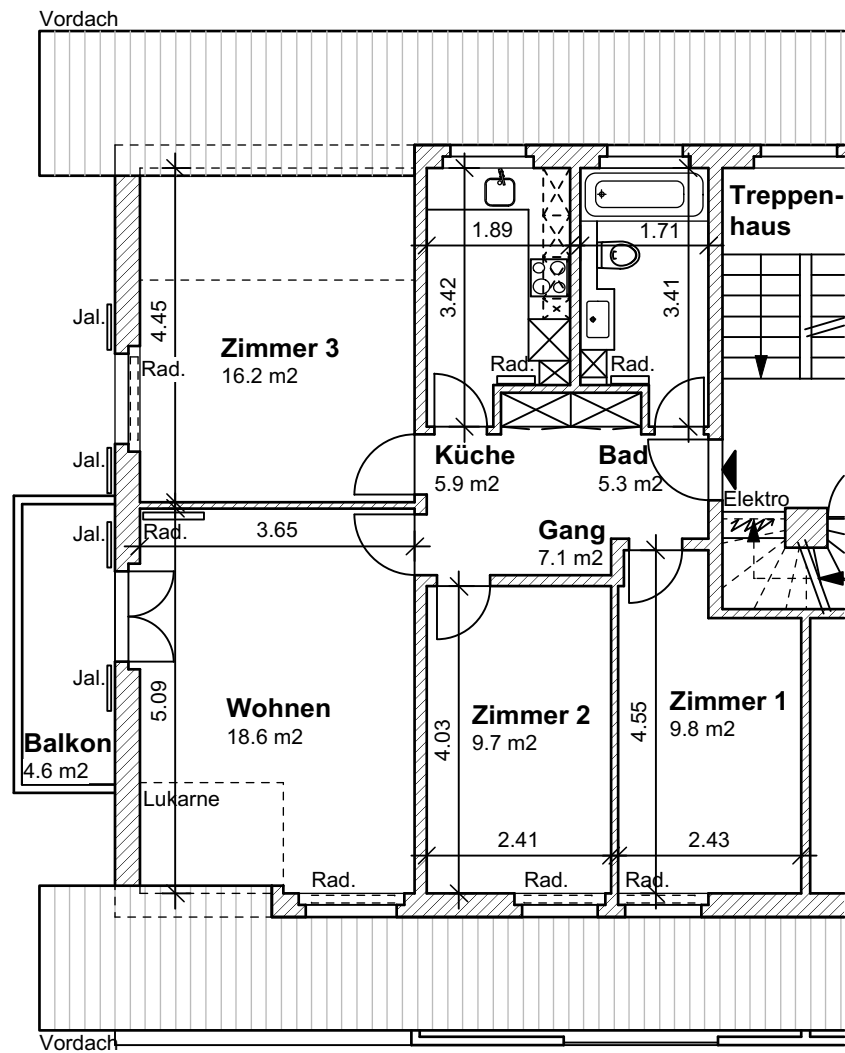


**Legende:**

- Gang: 7.1 m<sup>2</sup>
- Zimmer 1: 9.8 m<sup>2</sup>
- Zimmer 2: 9.7 m<sup>2</sup>
- Wohnen: 18.6 m<sup>2</sup>
- Zimmer 3: 16.2 m<sup>2</sup>
- Küche: 5.9 m<sup>2</sup>
- Bad: 5.3 m<sup>2</sup>

**72.6 m<sup>2</sup>**

Balkon: 4.6 m<sup>2</sup>



**Mehrfamilienhaus Meikirchstrasse 38, 3042 Ortschwaben**

**Vermietungsplan: 3. Stock rechts / 4 Zimmerwohnung / 104934.433 010**

Masstab

1:100

Plangröße

21 x 30 cm

Erstelldatum

24.06.2015