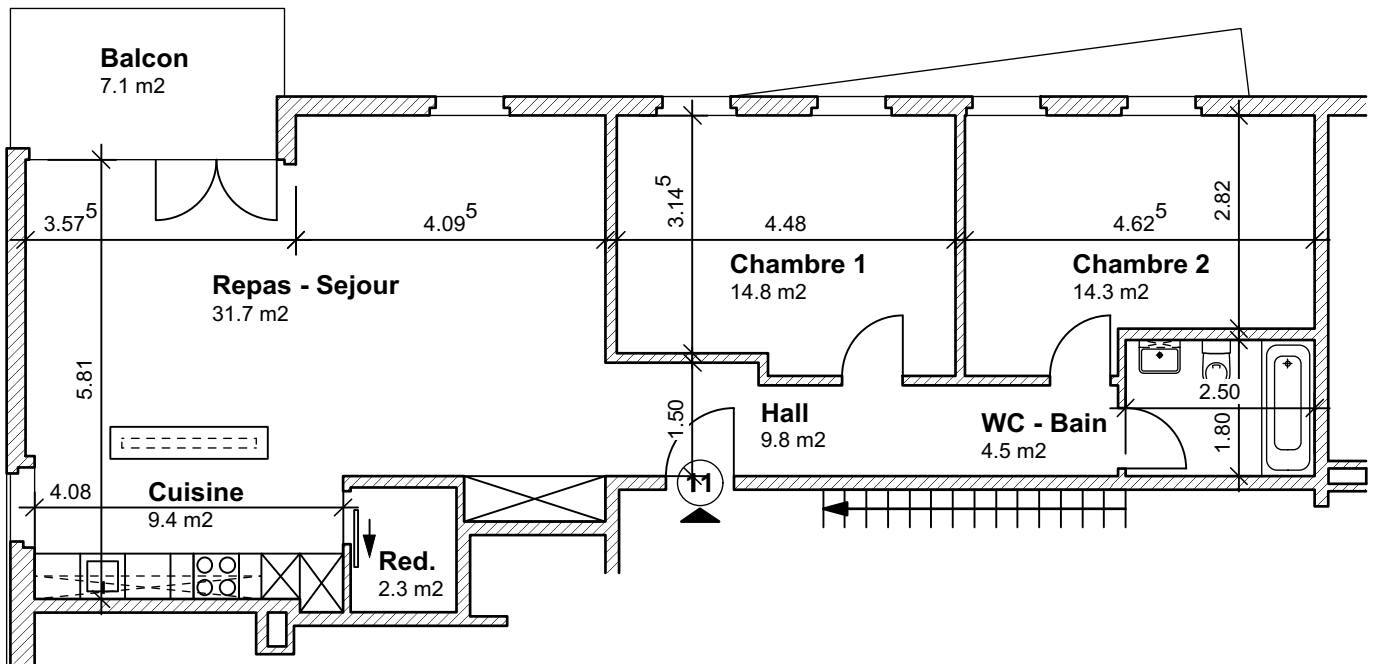


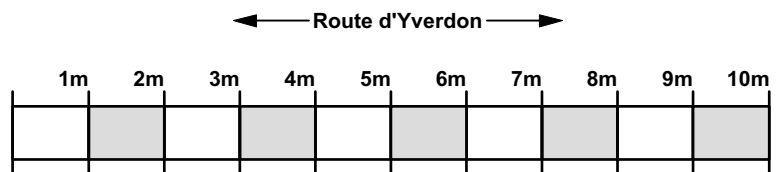
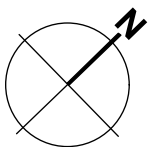
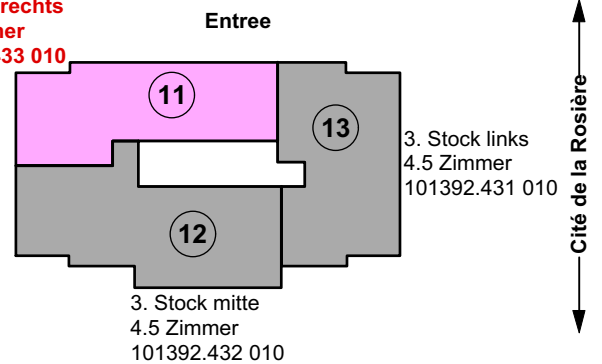
**Legende:**

Hall:	9.8 m <sup>2</sup>
WC - Bain:	4.5 m <sup>2</sup>
Chambre 2:	14.3 m <sup>2</sup>
Chambre 1:	14.8 m <sup>2</sup>
Repas - Sejour:	31.7 m <sup>2</sup>
Cuisine:	9.4 m <sup>2</sup>
Reduit:	2.3 m <sup>2</sup>
	<b>86.8 m<sup>2</sup></b>

Balcon: 7.1 m<sup>2</sup>



3. Stock rechts  
3.5 Zimmer  
101392.433 010



Mehrfamilienhaus Cité de la Rosière 1, 1470 Estavayer - le - Lac

**Vermietungsplan: 3. Stock rechts / 3 1/2 Zimmerwohnung / 101392.433 010**

Massstab

1:100

Plangrösse

21 x 30 cm

Erstelldatum

16.10.2015