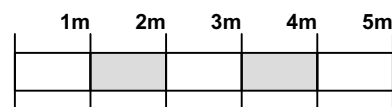
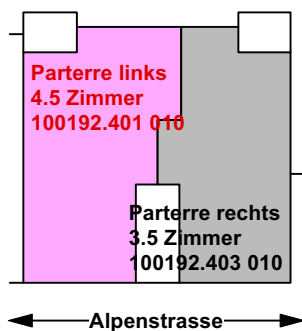
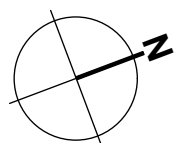
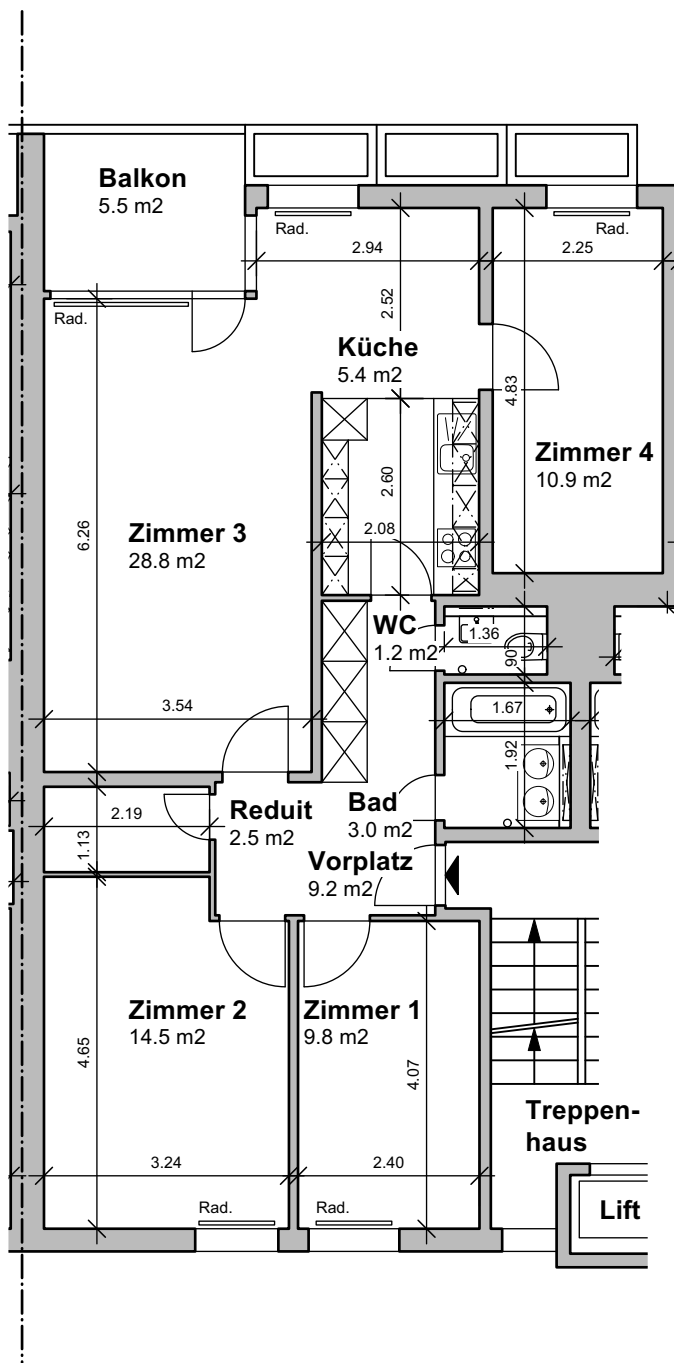


Legende:

Vorplatz:	9.2 m ²
Zimmer 1:	9.8 m ²
Zimmer 2:	14.5 m ²
Zimmer 3:	28.8 m ²
Zimmer 4:	10.9 m ²
Küche:	5.4 m ²
WC:	1.2 m ²
Bad:	3.0 m ²

82.8 m²

Reduit:	2.5 m ²
Balkon:	5.5 m ²



Mehrfamilienhaus Alpenstrasse 6c, 3072 Ostermündigen

Vermietungsplan: Parterre links / 4.5 Zimmerwohnung / 100192.401 010