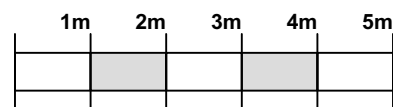
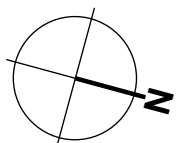
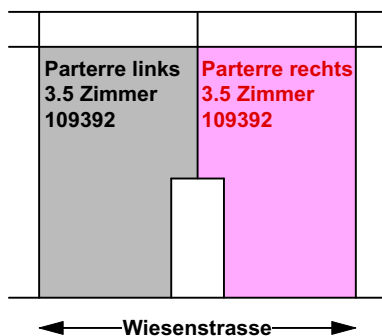
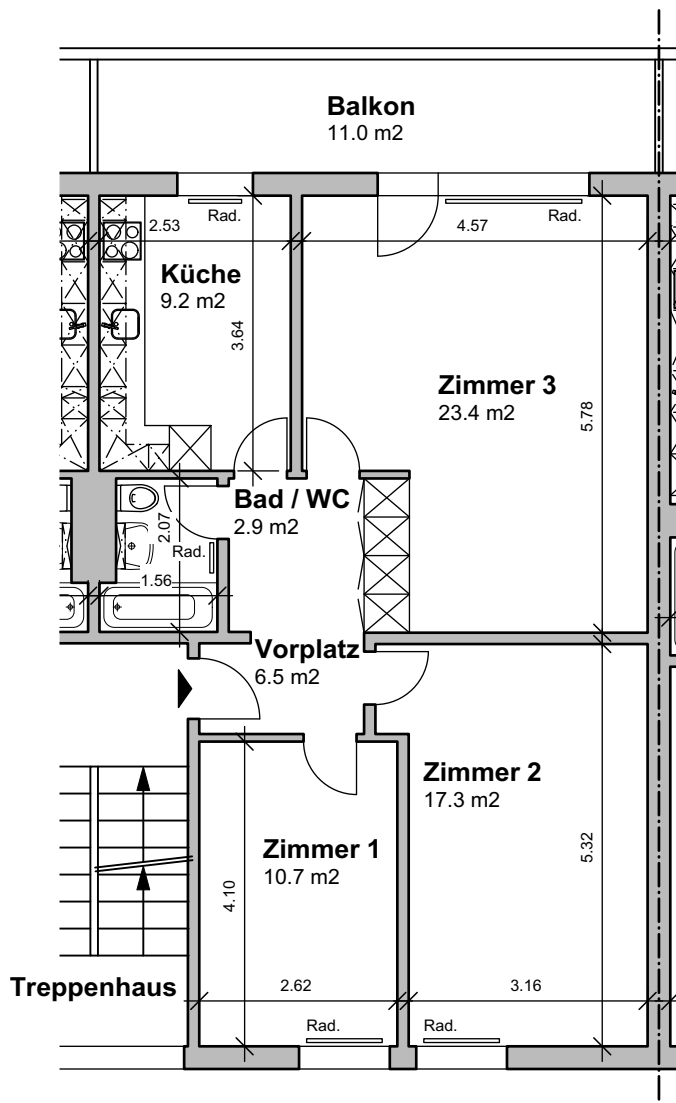


**Legende:**

Vorplatz: 6.5 m<sup>2</sup>  
Zimmer 1: 10.7 m<sup>2</sup>  
Zimmer 2: 17.3 m<sup>2</sup>  
Zimmer 3: 23.4 m<sup>2</sup>  
Küche: 9.2 m<sup>2</sup>  
Bad / WC: 2.9 m<sup>2</sup>  
**70.0 m<sup>2</sup>**

Balkon: 11.0 m<sup>2</sup>



Mehrfamilienhaus Wiesenstrasse 28, 3072 Ostermündigen

**Vermietungsplan: Parterre rechts / 3.5 Zimmerwohnung / 109392**

Massstab

1:100

Plangrösse

21 x 30 cm

Erstelldatum

10.07.2020