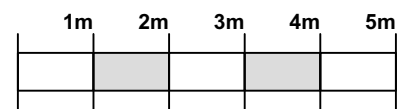
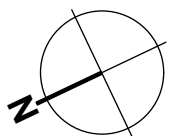
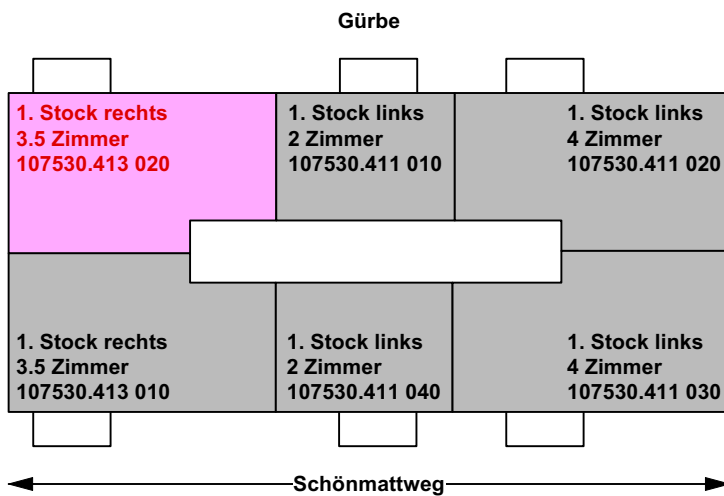
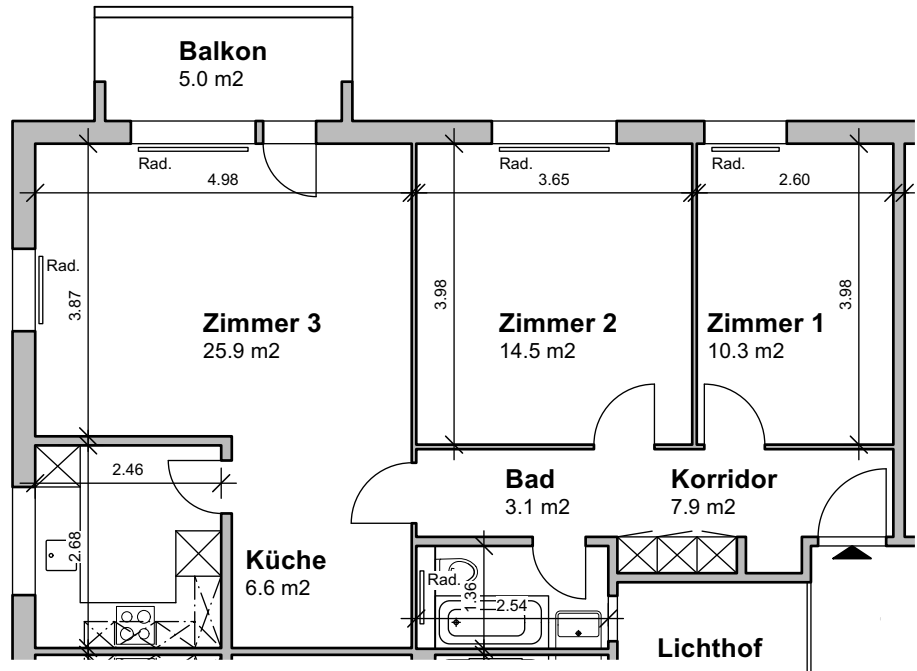


Legende:

Korridor:	7.9 m ²
Zimmer 1:	10.3 m ²
Zimmer 2:	14.5 m ²
Zimmer 3:	25.9 m ²
Küche:	6.6 m ²
Bad:	3.1 m ²
	<u>68.3 m²</u>

Balkon: 5.0 m²



Mehrfamilienhaus Schönmatweg 24, 3123 Belp

Vermietungsplan: 1. Stock rechts / 3.5 Zimmerwohnung / 107530.413 020

Massstab

1:100

Plangrösse

21 x 30 cm

Erstelldatum

23.06.2023