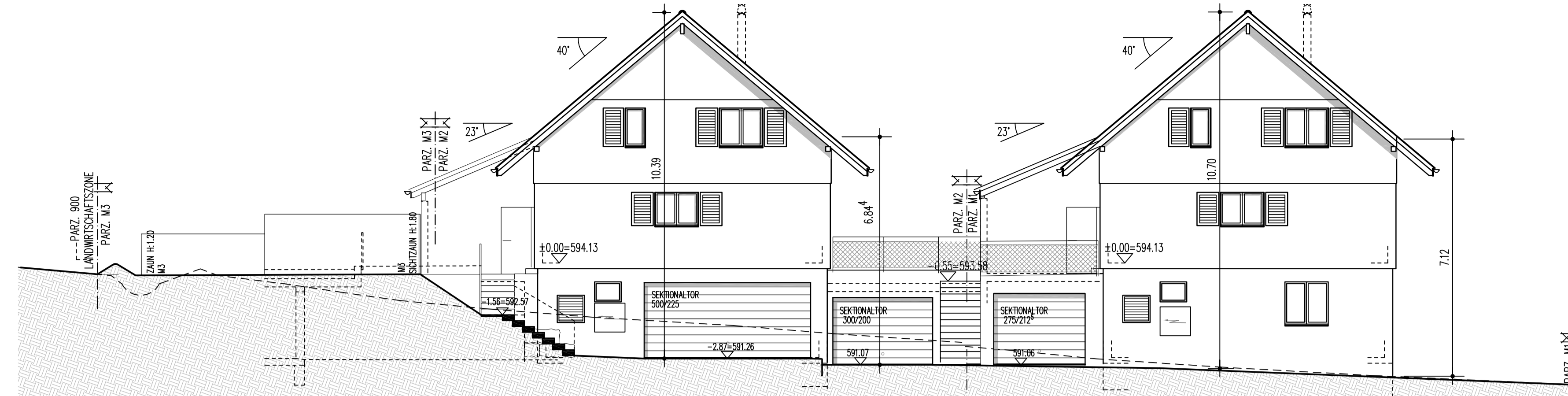
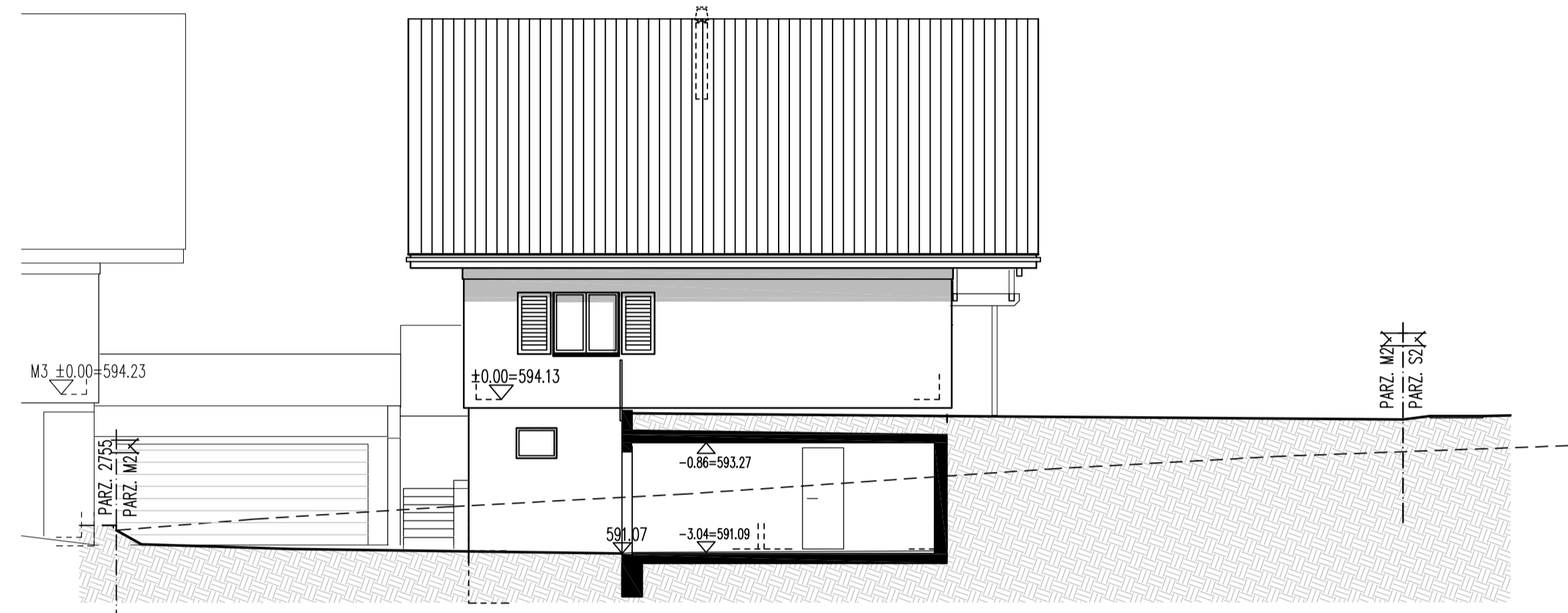


M2 OSTFASSADE

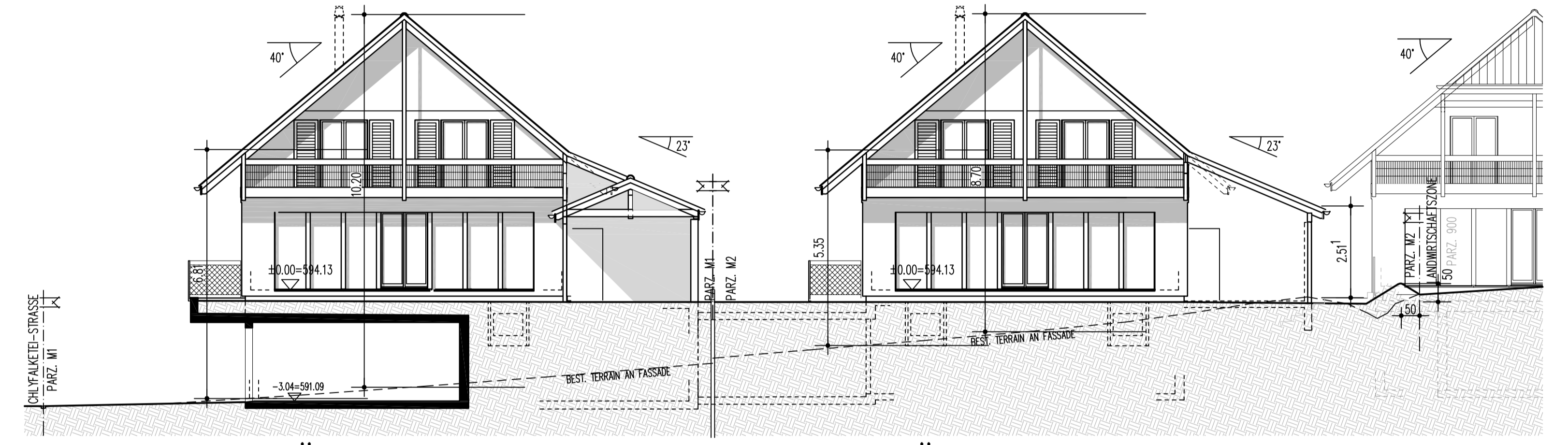


M2 NORDFASSADE

M1 NORDFASSADE



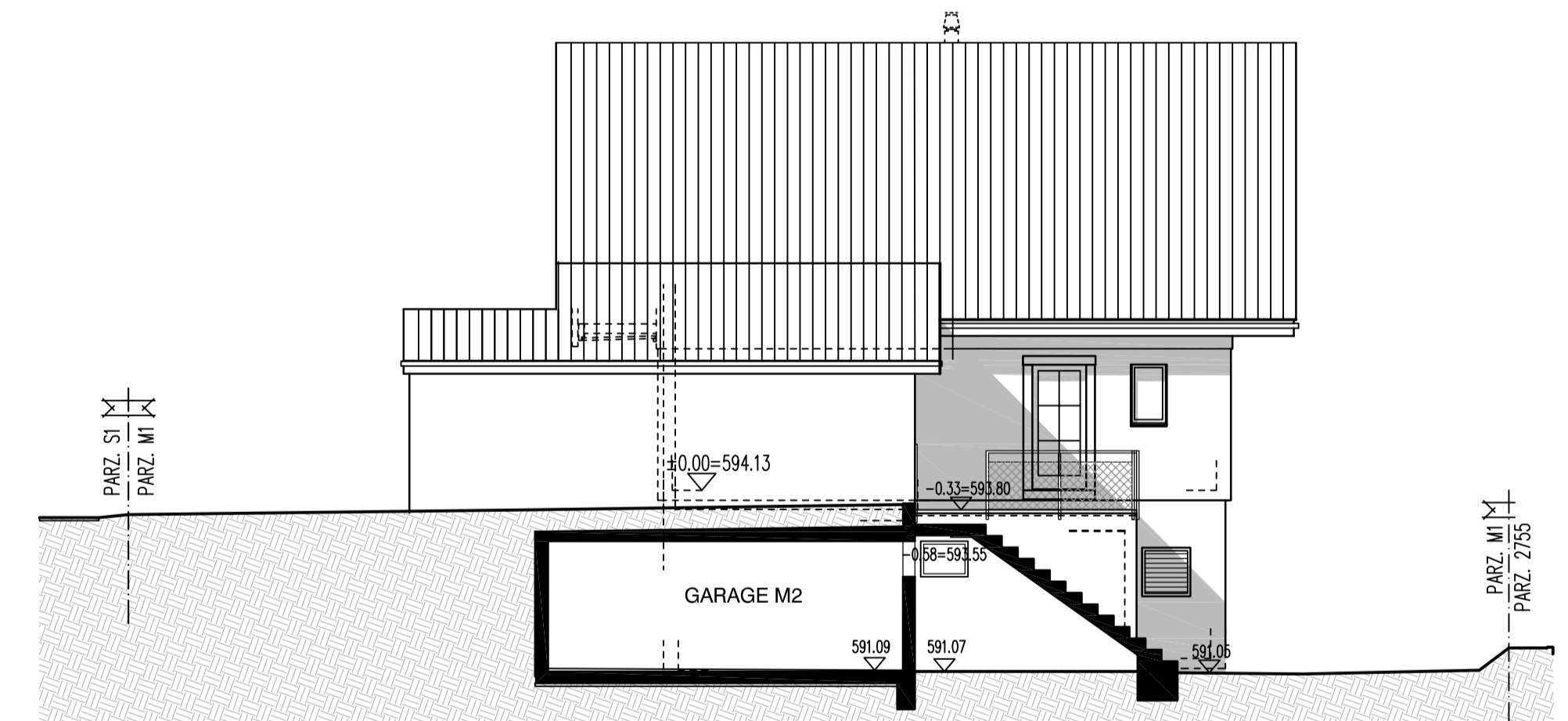
M2 WESTFASSADE



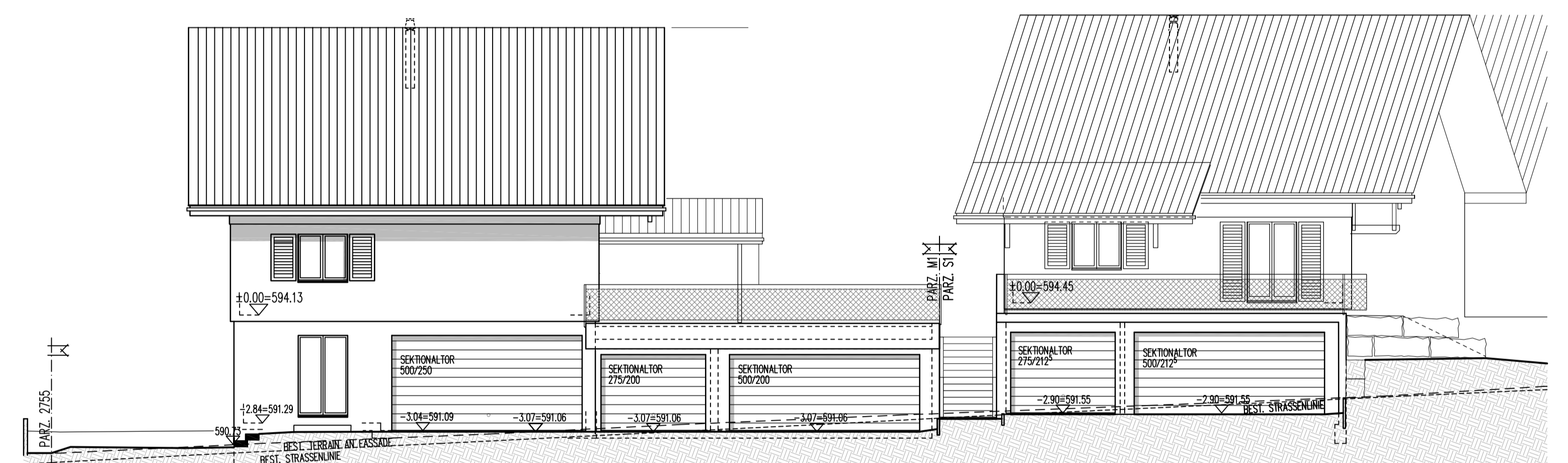
M1 SÜDFASSADE

M2 SÜDFASSADE

M3



M1 OSTFASSADE
AUF GRENZE



M1 WESTFASSADE

S1 WESTFASSADE
GARAGENANSICHT

M1 ±0.00 = 594.13
M2 ±0.00 = 594.13

DÄGELMATTE PARZELLE 2689, 5737 MENZIKEN		18.005/M1M2/05
Gez.	BO	11. DEZ. 2023
Rev.		
Rev.		
Rev.		
Plan Gr.		A1
Aktiengesellschaft Kämpf Planung und Holzbau		Suhrhardweg 6 5102 Rapperswil
		Tel. 062 889 16 00 Fax. 062 889 16 01

