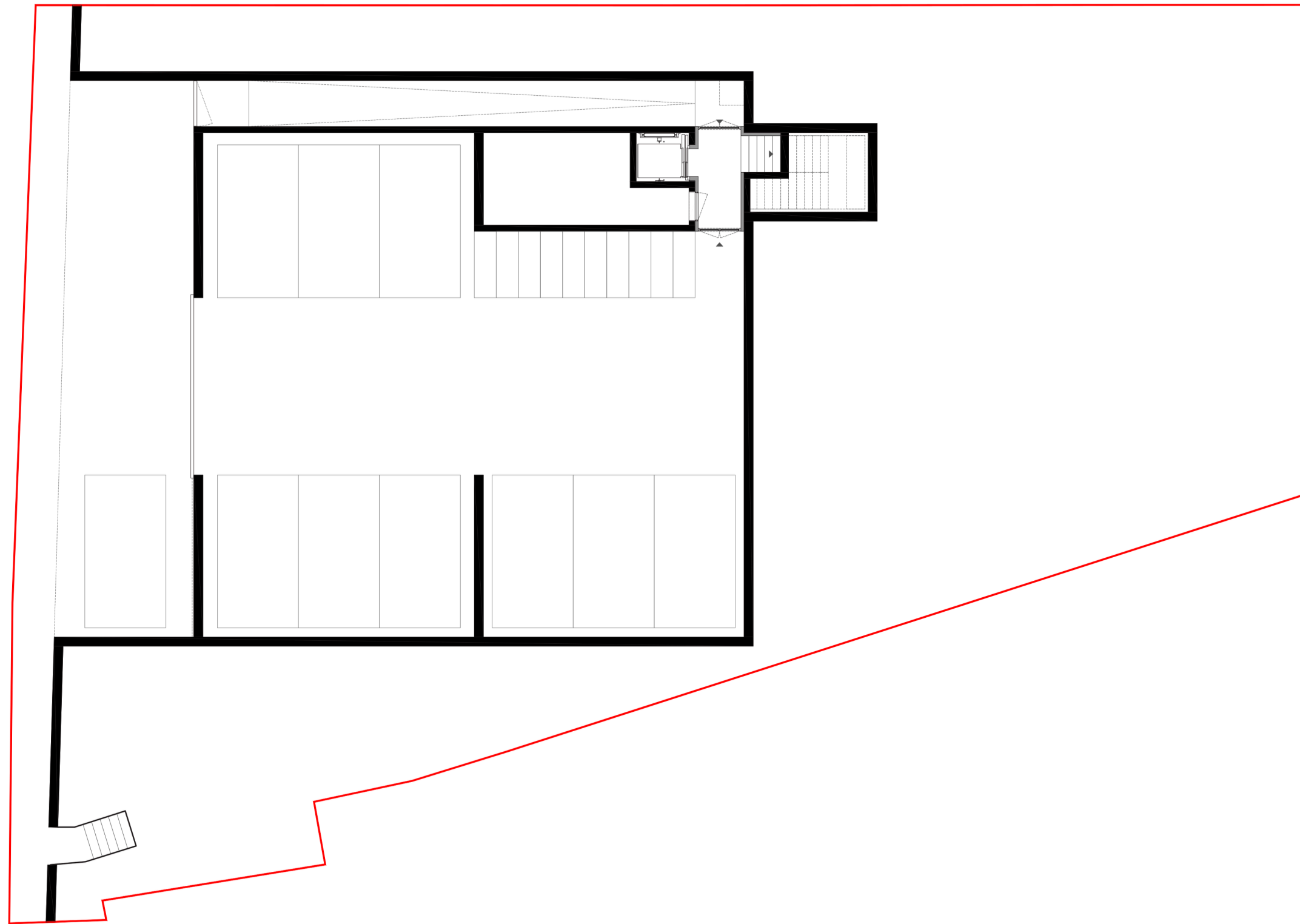


# RESIDENZA SELVA PIANA - PREGASSONA

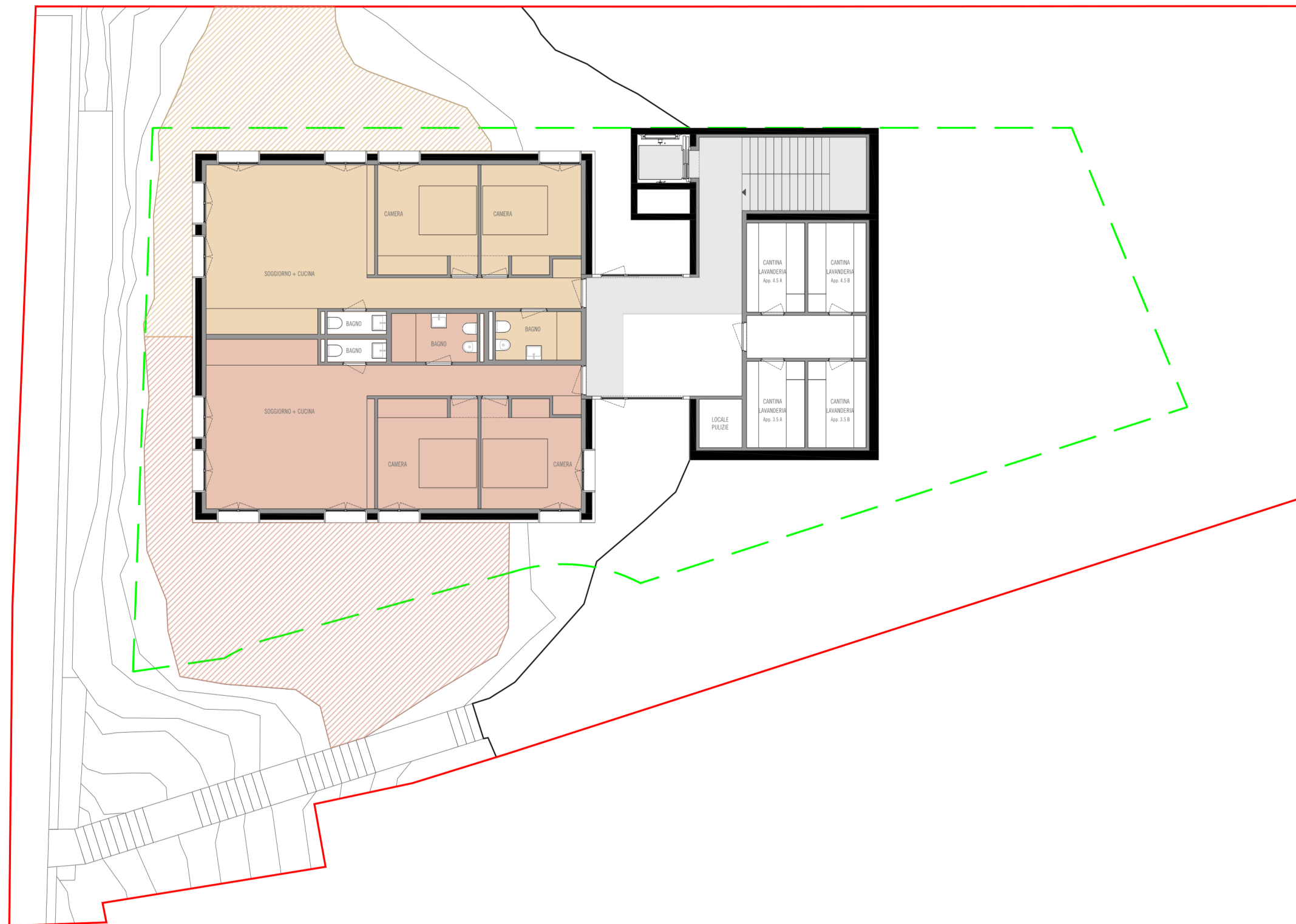


# RESIDENZA SELVA PIANA - PREGASSONA

■ Appartamento 2.5 o 3.5 A SUL  
 - 73.18 m<sup>2</sup> SUN - 65.74 m<sup>2</sup>  
 Terrazza-Giardino 41.64 m<sup>2</sup>  
 Cantina 5.38 m<sup>2</sup>

■ Appartamento 2.5 o 3.5 B  
 SUL - 72.69 m<sup>2</sup> SUN - 65.74 m<sup>2</sup>  
 Terrazza-Giardino 72.87 m<sup>2</sup>  
 Cantina 5.38 m<sup>2</sup>

■ Parti comuni  
 SUL - 27.88 m<sup>2</sup>

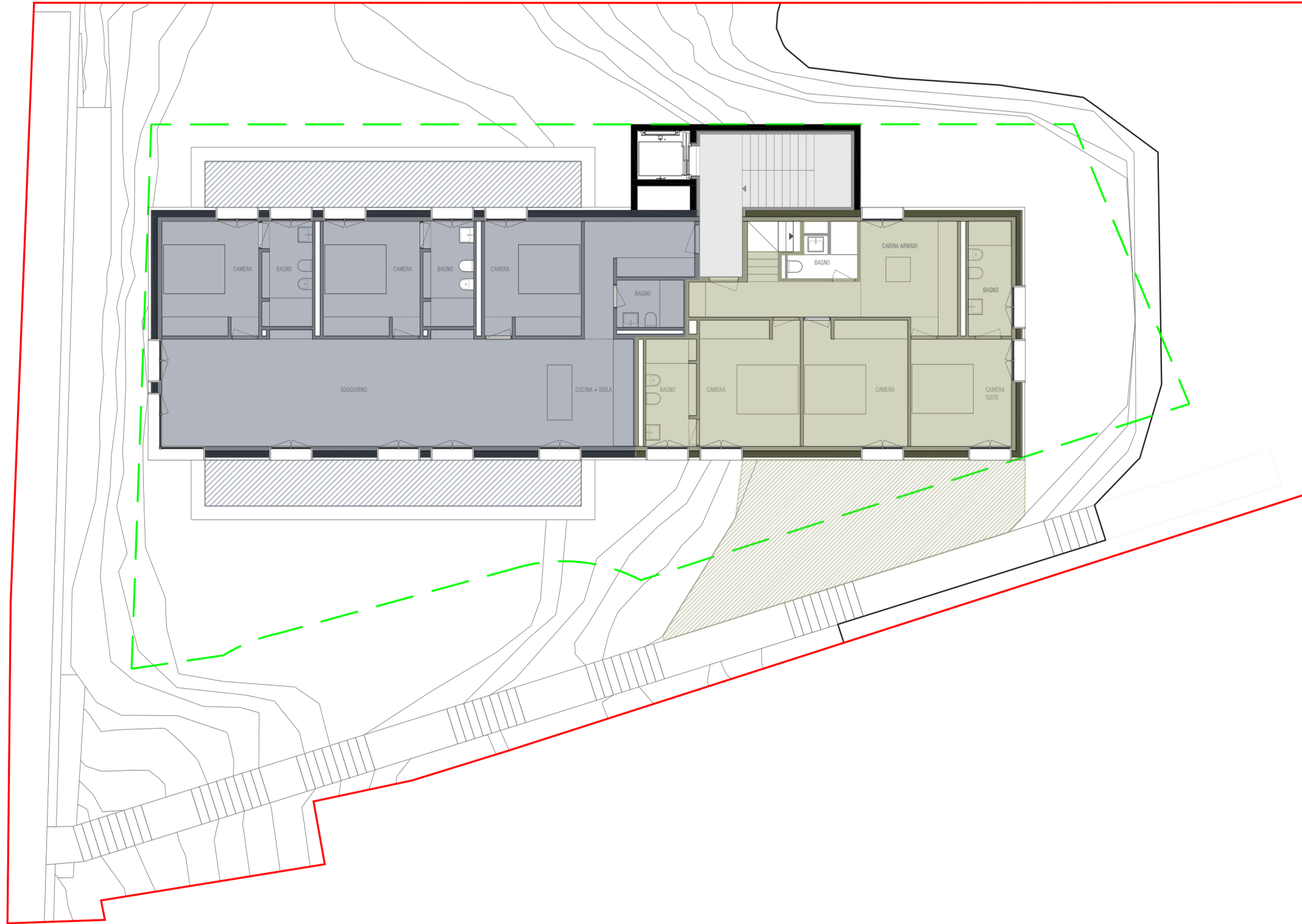


# RESIDENZA SELVA PIANA - PREGASSONA

■ Appartamento 4.5 A  
 SUL - 128.68 m<sup>2</sup>  
 SUN - 115.55 m<sup>2</sup>  
 2 Terrazze  
 36.69 m<sup>2</sup>  
 Cantina  
 5.57 m<sup>2</sup>

■ Appartamento 4.5 B  
 (duplex) SUL - 186.27  
 m<sup>2</sup> SUN - 162.77 m<sup>2</sup> 2  
 Terrazze + Terrazza-  
 Giardino 164.39 m<sup>2</sup>  
 Cantina 5.57 m<sup>2</sup>

Parti comuni 15.03 m<sup>2</sup>



# RESIDENZA SELVA PIANA - PREGASSONA

