

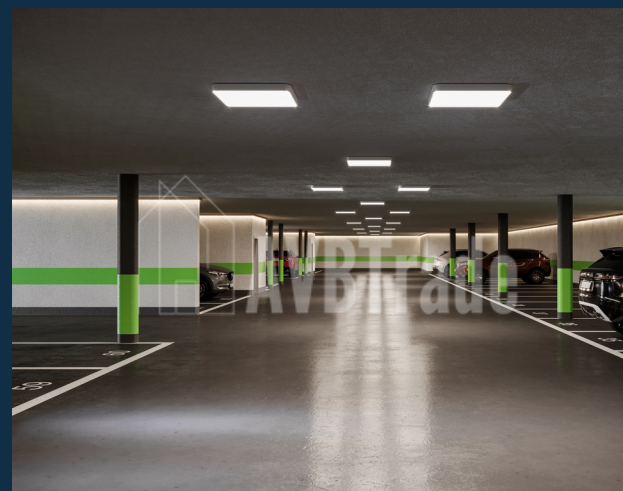
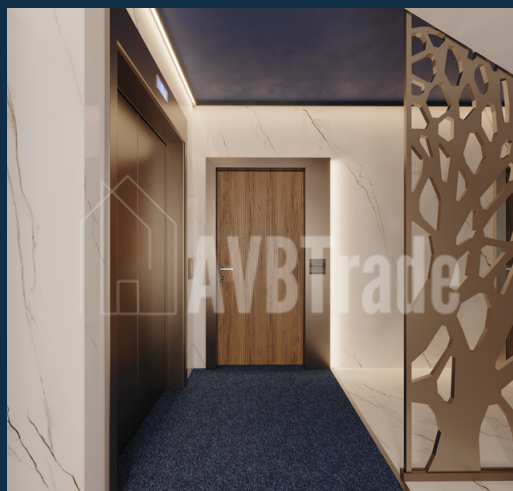


RESIDENZA AL PARCO

BIASCA

LISTINI E PLANIMETRIE

5.5 LOCALI



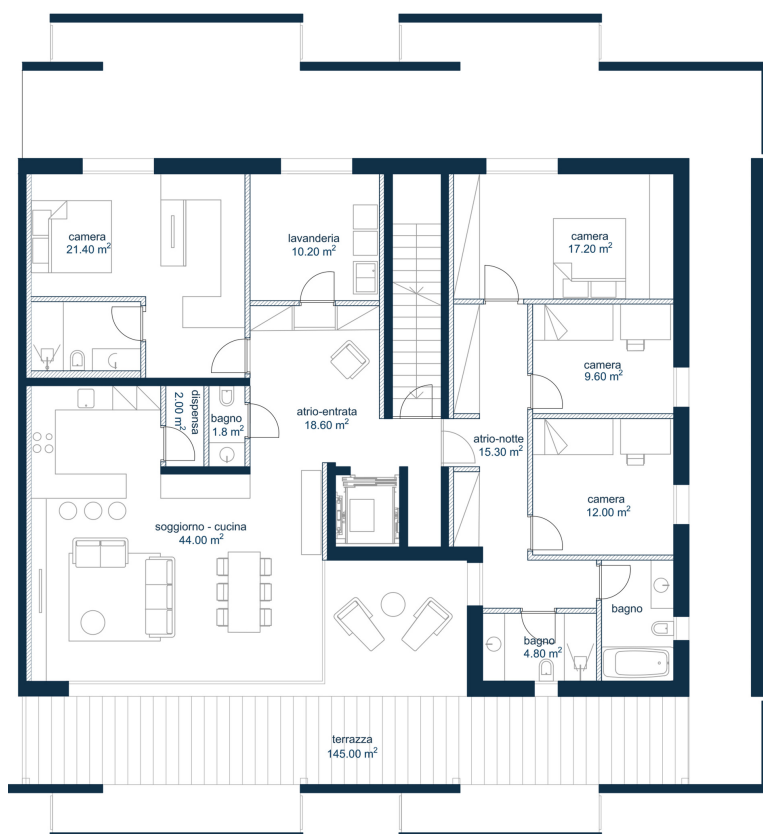
Residenza al Parco

Biasca

TIPOLOGIA A

Blocco	3
Piano	4
PPP	61
Locali	4.5
Superficie appartamento	201 mq
Superficie terrazza	156 mq
Superficie commerciale lorda	279 mq
Sup. commerciale= mq app+mq terrazze/2+mq lavanderie/2	
Posti auto esterni	-
Posti auto interni	3

Prezzo al mq	5'600 CHF
Prezzo appartamento	1'562'400 CHF
Prezzo posti auto interni	120'000 CHF
Totale	1'682'400 CHF



Via Quinta - 6710 Biasca

Planimetria non in scala