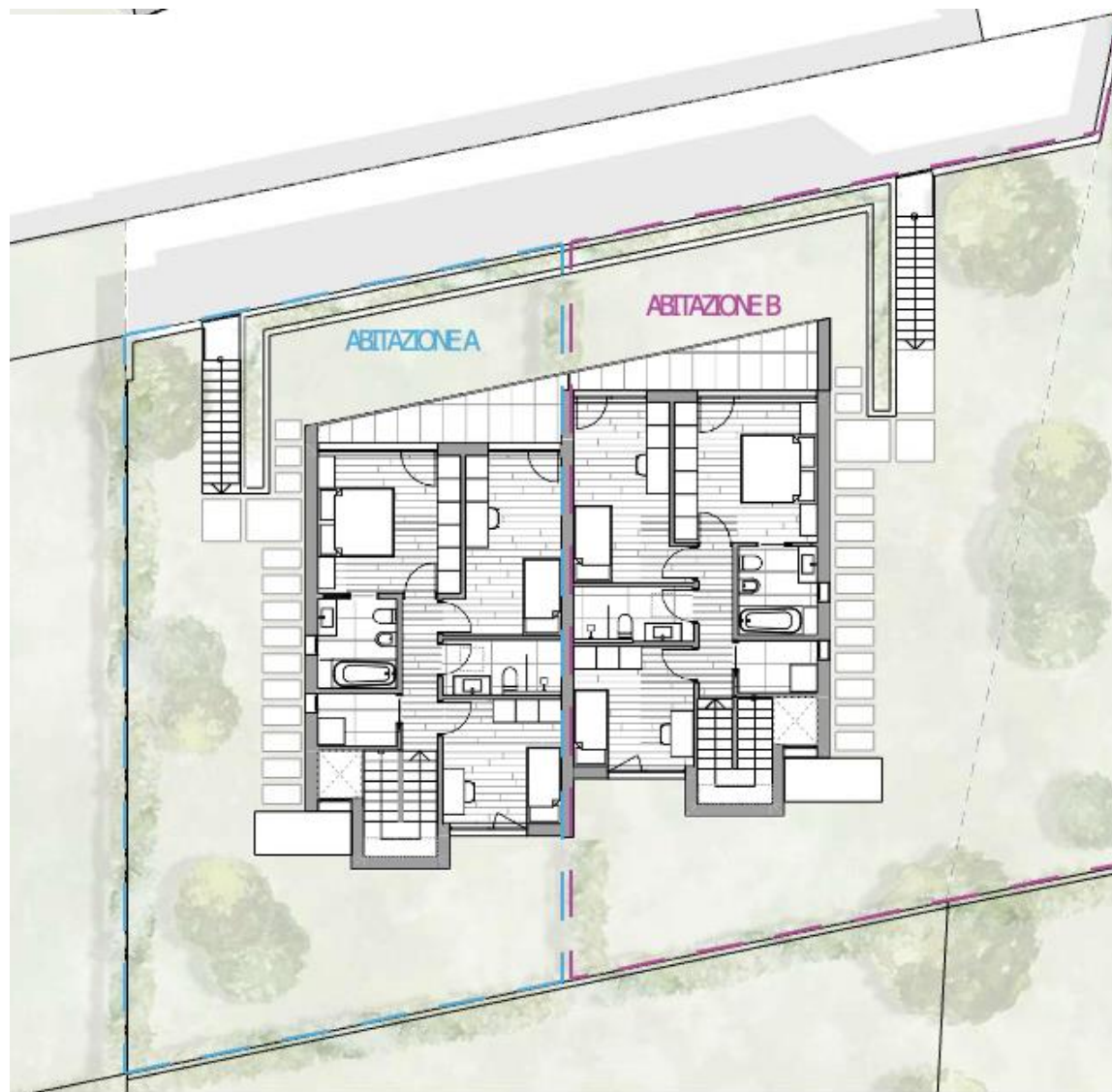


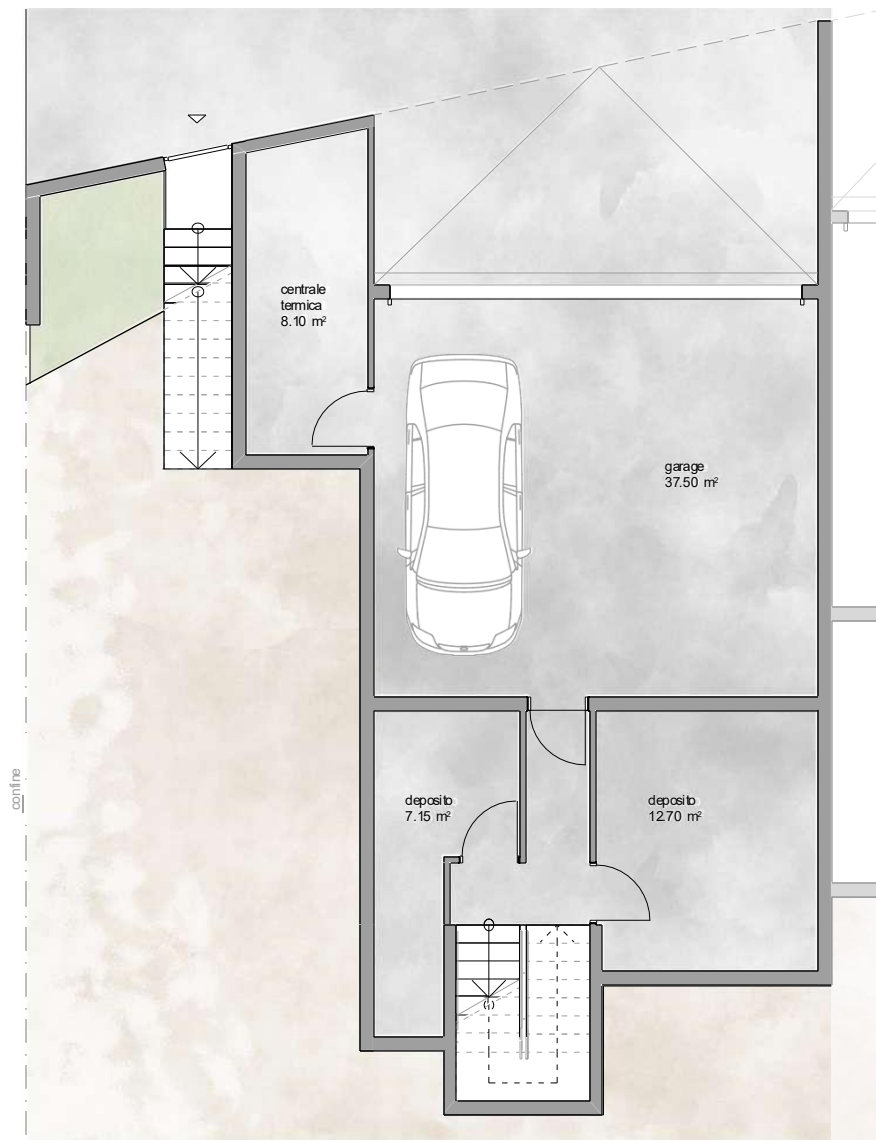
PIANO INTERRATO



PIANO TERRA



PIANO PRIMO



## ABITAZIONE A

Piano seminterrato

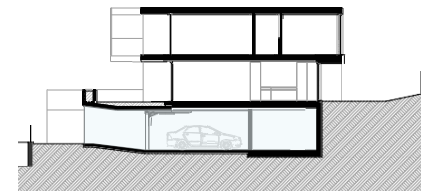
Locali:

Garage: 37.49 m<sup>2</sup>

Centrale termica: 8.12 m<sup>2</sup>

Depositi: 7.15 m<sup>2</sup>

2 posti auto coperti





## ABITAZIONE A

Piano terra

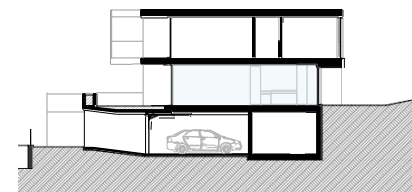
Locali:

Ingresso: 7.15 m<sup>2</sup>

Bagno: 3.20 m<sup>2</sup>

Cucina: 15.45 m<sup>2</sup>

Pranzo/Soggiorno: 28.85 m<sup>2</sup>





## ABITAZIONE A

### Piano primo

Locali:

Camera singola: 10.20 m<sup>2</sup>

Bagno: 4.55 m<sup>2</sup>

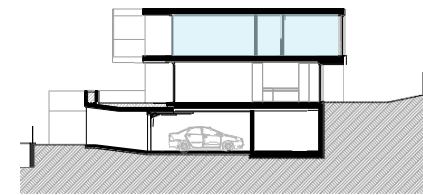
Camera singola: 12.40 m<sup>2</sup>

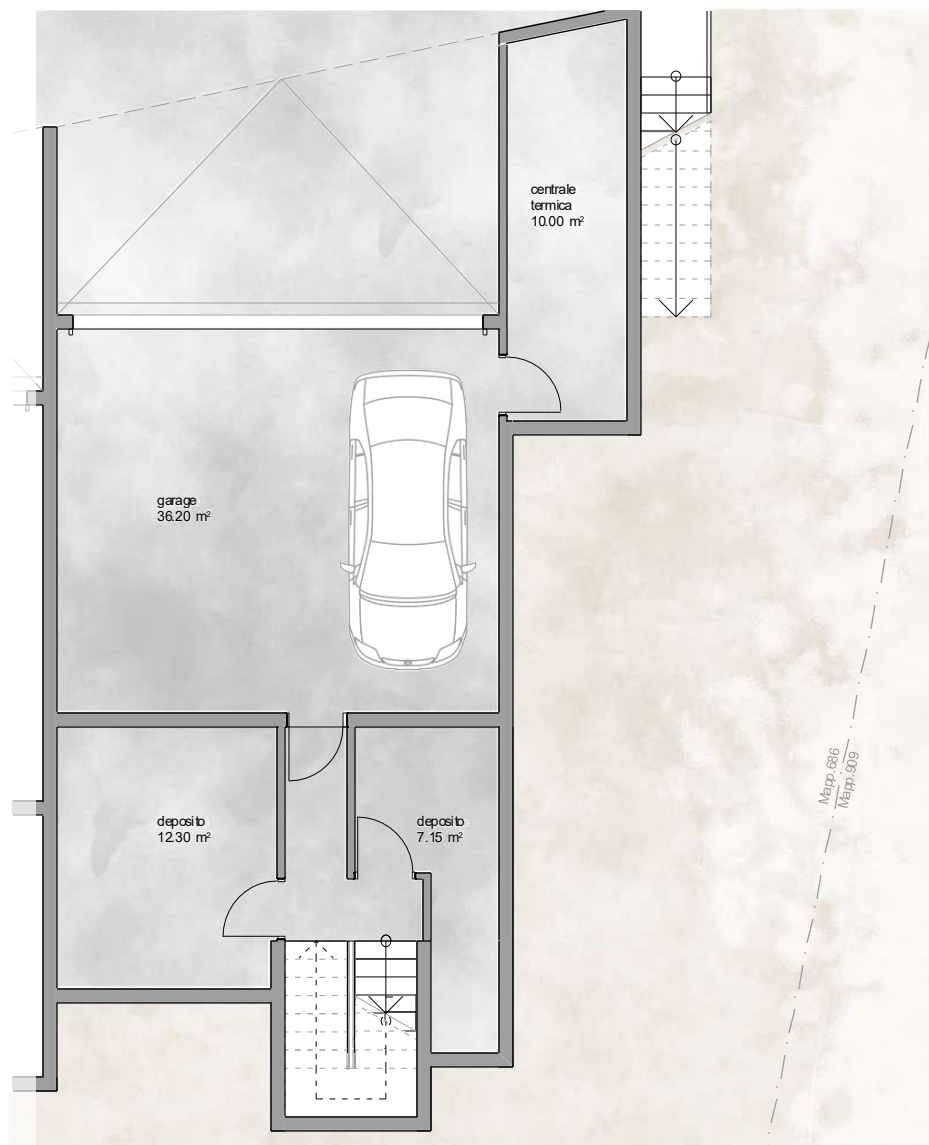
Camera matrimoniale: 13.50 m<sup>2</sup>

Bagno: 4.80m<sup>2</sup>

Lavanderia: 2.85m<sup>2</sup>

Balcone: 7.60 m<sup>2</sup>





## ABITAZIONE B

Piano seminterrato

Locali:

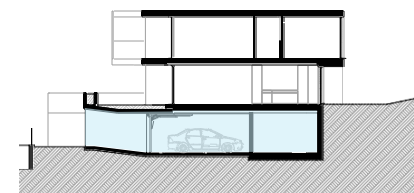
Garage: 36.20 m<sup>2</sup>

Centrale termica: 10.00 m<sup>2</sup>

Deposito: 7.15 m<sup>2</sup>

Deposito: 12.30 m<sup>2</sup>

2 posti auto coperti





## ABITAZIONE B

Piano terra

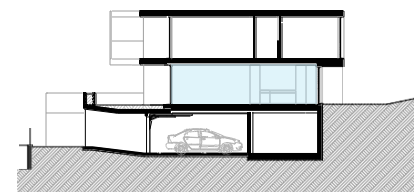
Locali:

Ingresso: 3.95 m<sup>2</sup>

Bagno: 3.20 m<sup>2</sup>

Cucina: 15.45 m<sup>2</sup>

Pranzo/Soggiorno: 28.85 m<sup>2</sup>





## ABITAZIONE B

Piano primo

Locali:

Camera singola: 9.85 m<sup>2</sup>

Bagno: 4.55 m<sup>2</sup>

Camera singola: 12.55 m<sup>2</sup>

Camera matrimoniale: 13.80 m<sup>2</sup>

Bagno: 4.80 m<sup>2</sup>

Lavanderia: 2.85 m<sup>2</sup>

Balcone: 7.45 m<sup>2</sup>

