

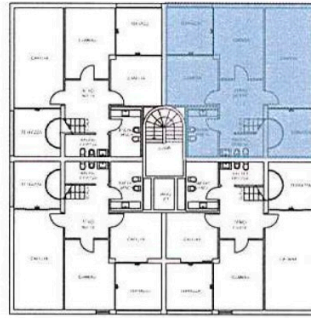
PPP

Superficie Lorda Appartamento
Superficie Terrazze

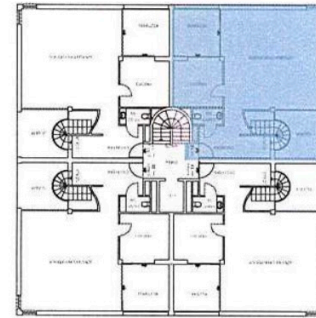
= Mq 76.30+82.05 = **Mq 158.35**

= Mq (9.60 + 9.60 + 9.60)/2 = **Mq 14.40**

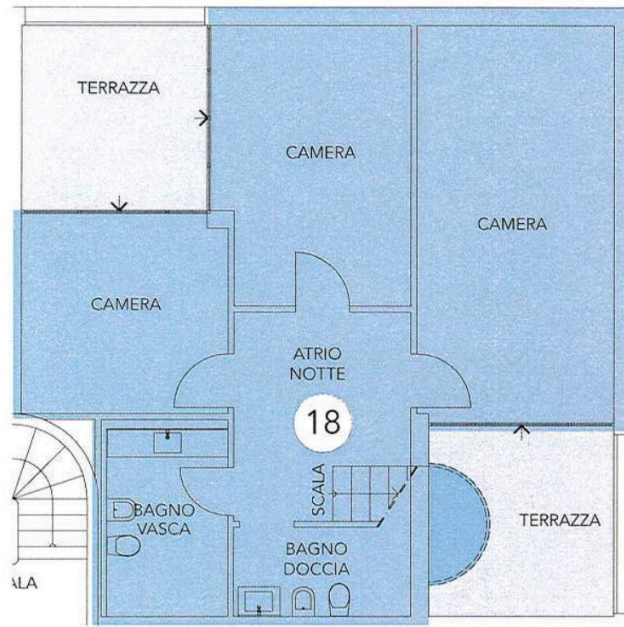
TOTALE SUPERFICIE COMMERCIALE PPP 18 = Mq 172.75



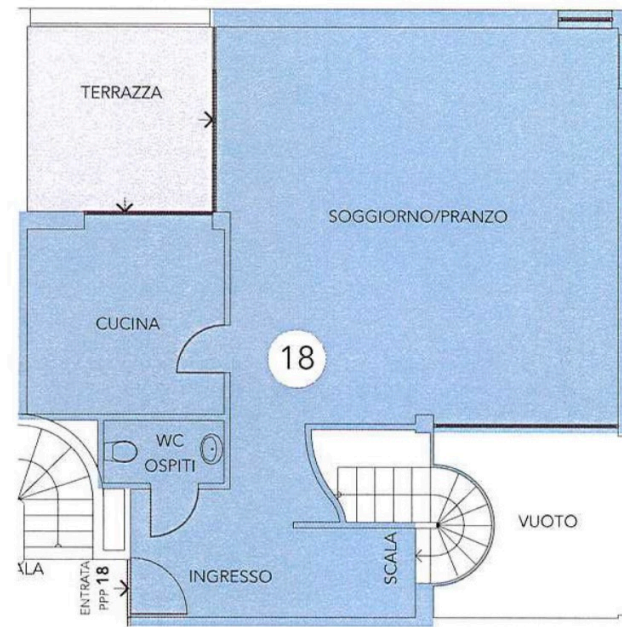
Piano TERZO



Piano QUARTO



Piano TERZO



Piano QUARTO