

TOTALE SUPERFICIE EDIFICABILE: 389.76 M2

SUPERFICIE UTILE LORDA:

PIANO CANTINA

0.00 M2

PIANO TERRENO

$1.60 \text{ M} \times 4.56 \text{ M} + 4.40 \text{ M} \times 10.00 \text{ M} + 7.40 \text{ M} \times 3.50 \text{ M}$
 $\Rightarrow 77.20 \text{ M}^2$

PRIMO PIANO

$7.90 \text{ M} \times 10.00 \text{ M} + 1.60 \text{ M} \times 4.56 \text{ M} = 86.30 \text{ M}^2$

DEDUZIONI:

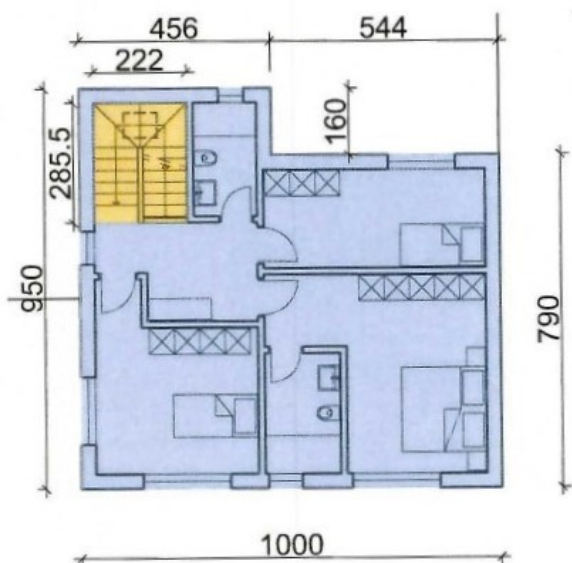
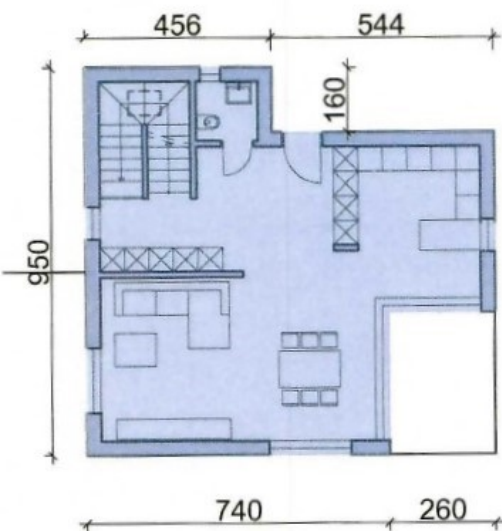
$2.855 \text{ M} \times 2.22 \text{ M} = 6.34 \text{ M}^2$

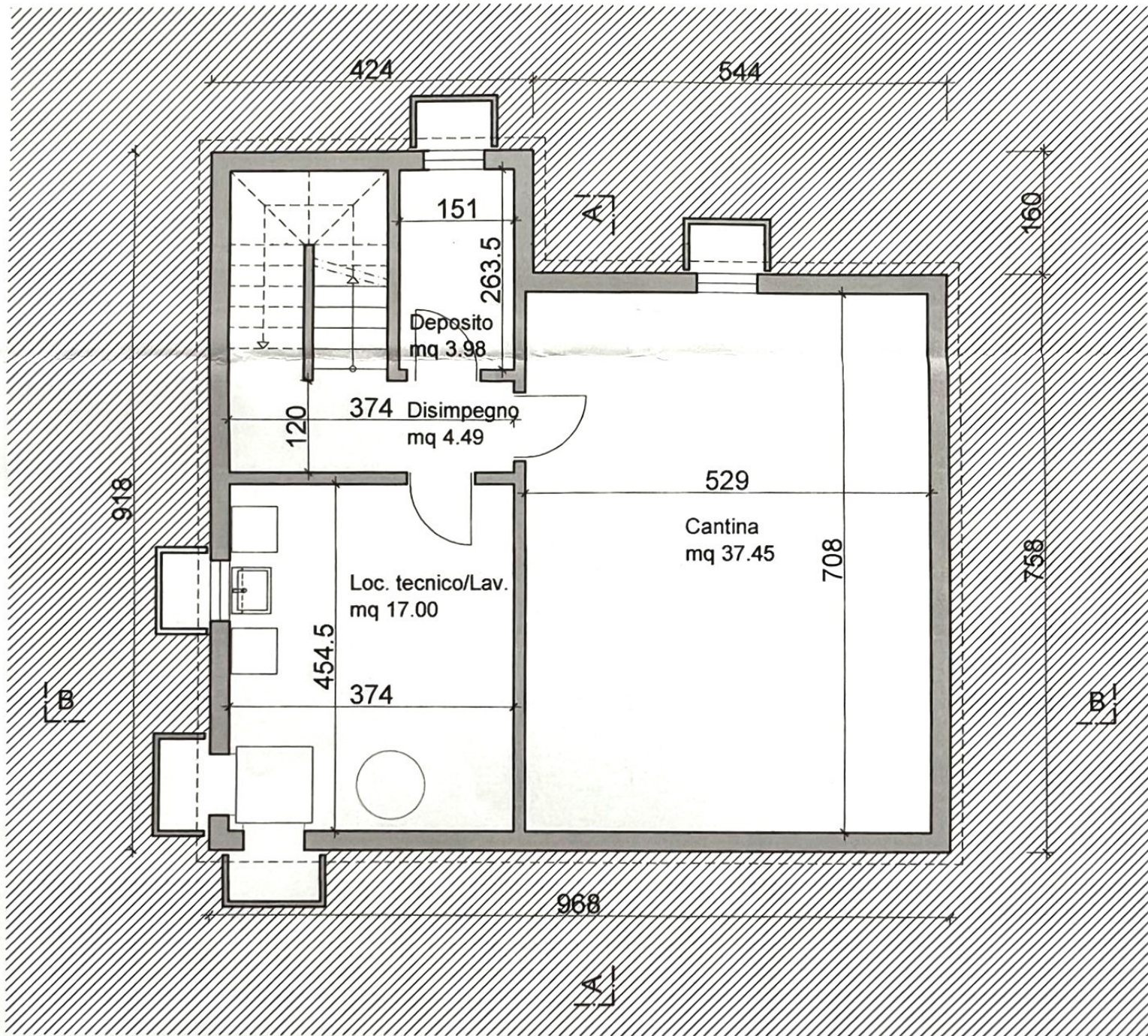
SUL TOTALE PROGETTO:

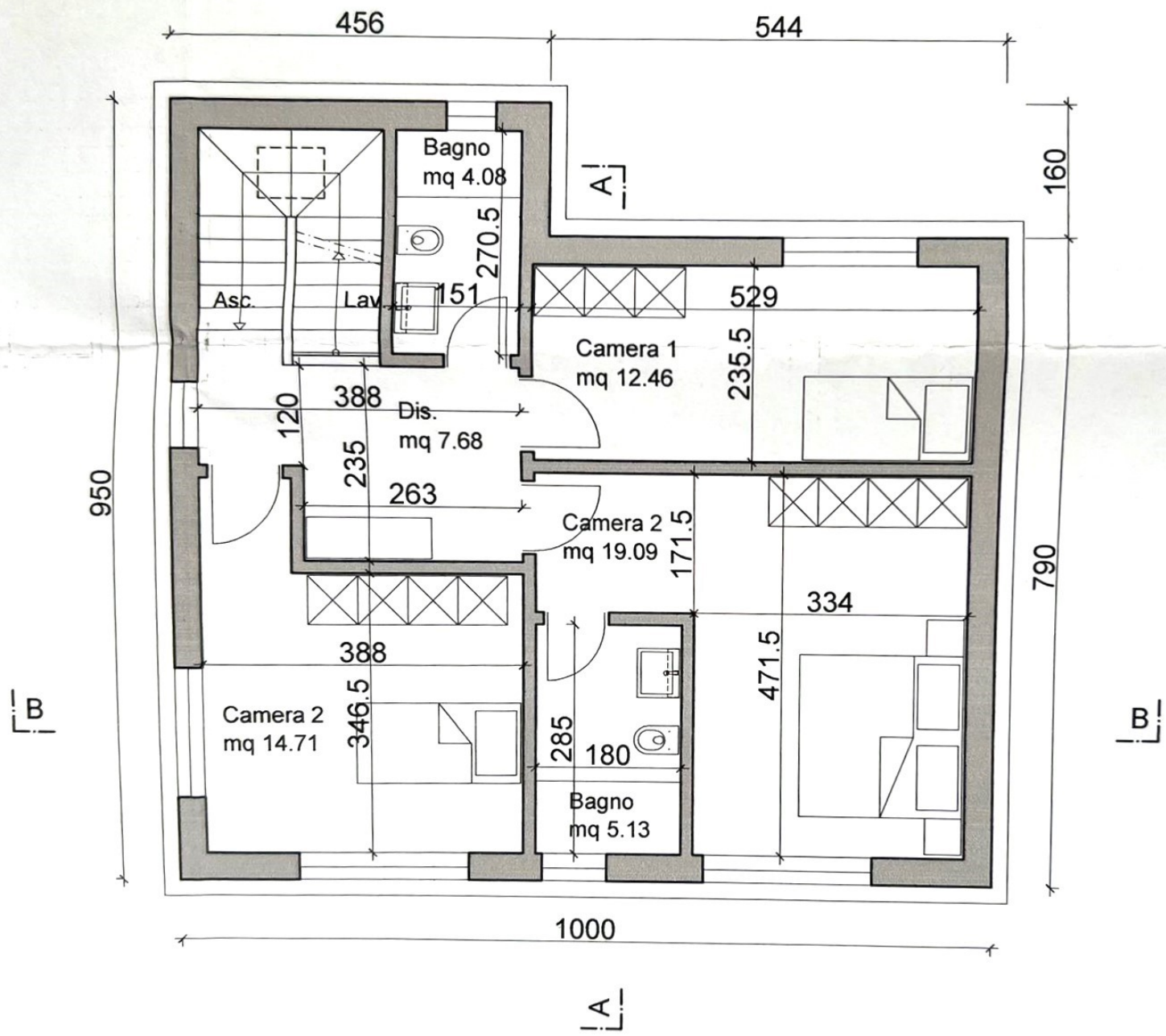
$(0.00 + 77.20 + 86.30 - 6.34) \text{ M}^2 = \underline{157.16 \text{ M}^2}$

INDICE DI SFRUTTAMENTO PROGETTO:

$157.16 \text{ M}^2 / 389.76 \text{ M}^2 = \underline{0.40} < 0.5$

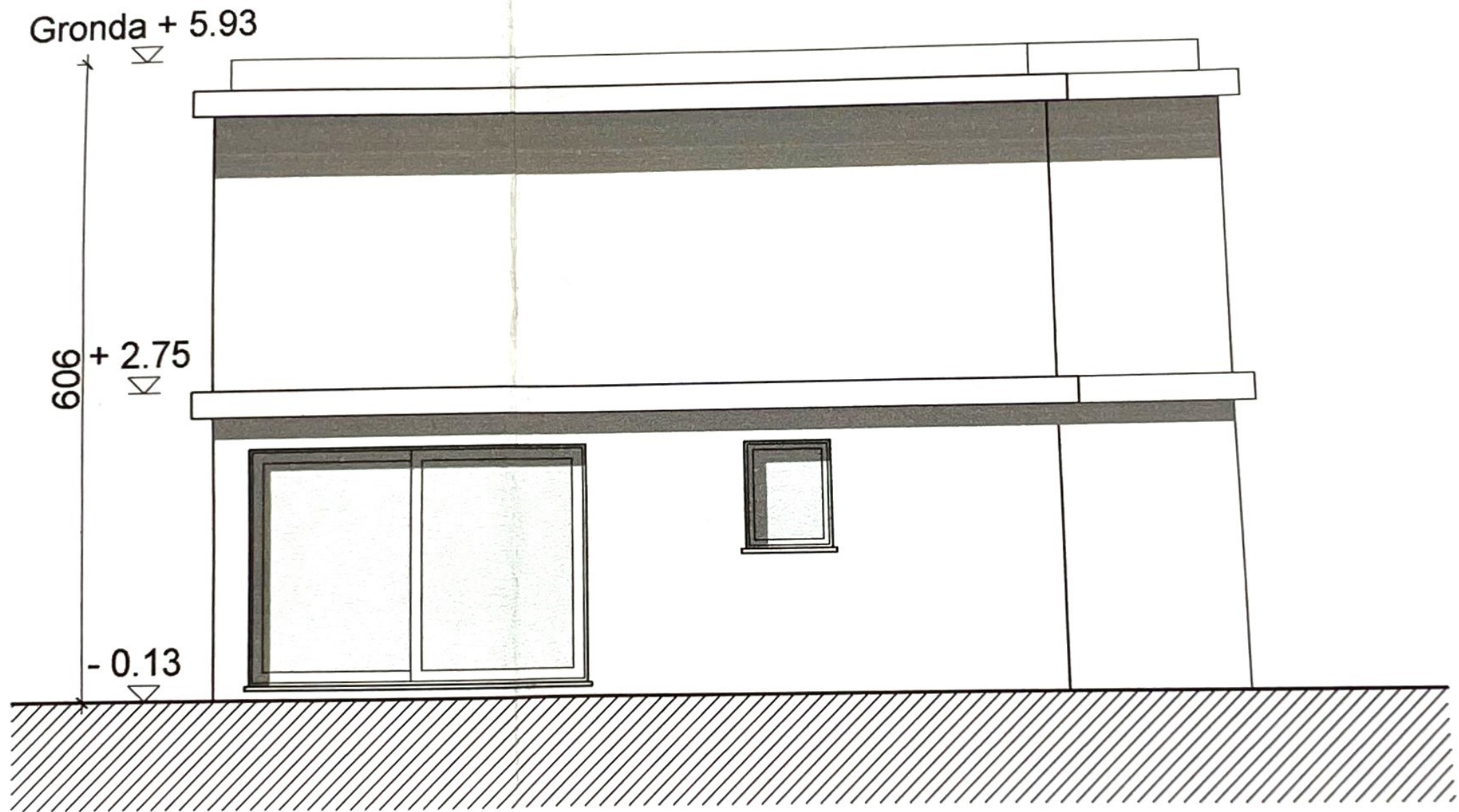






PRIMO PIANO

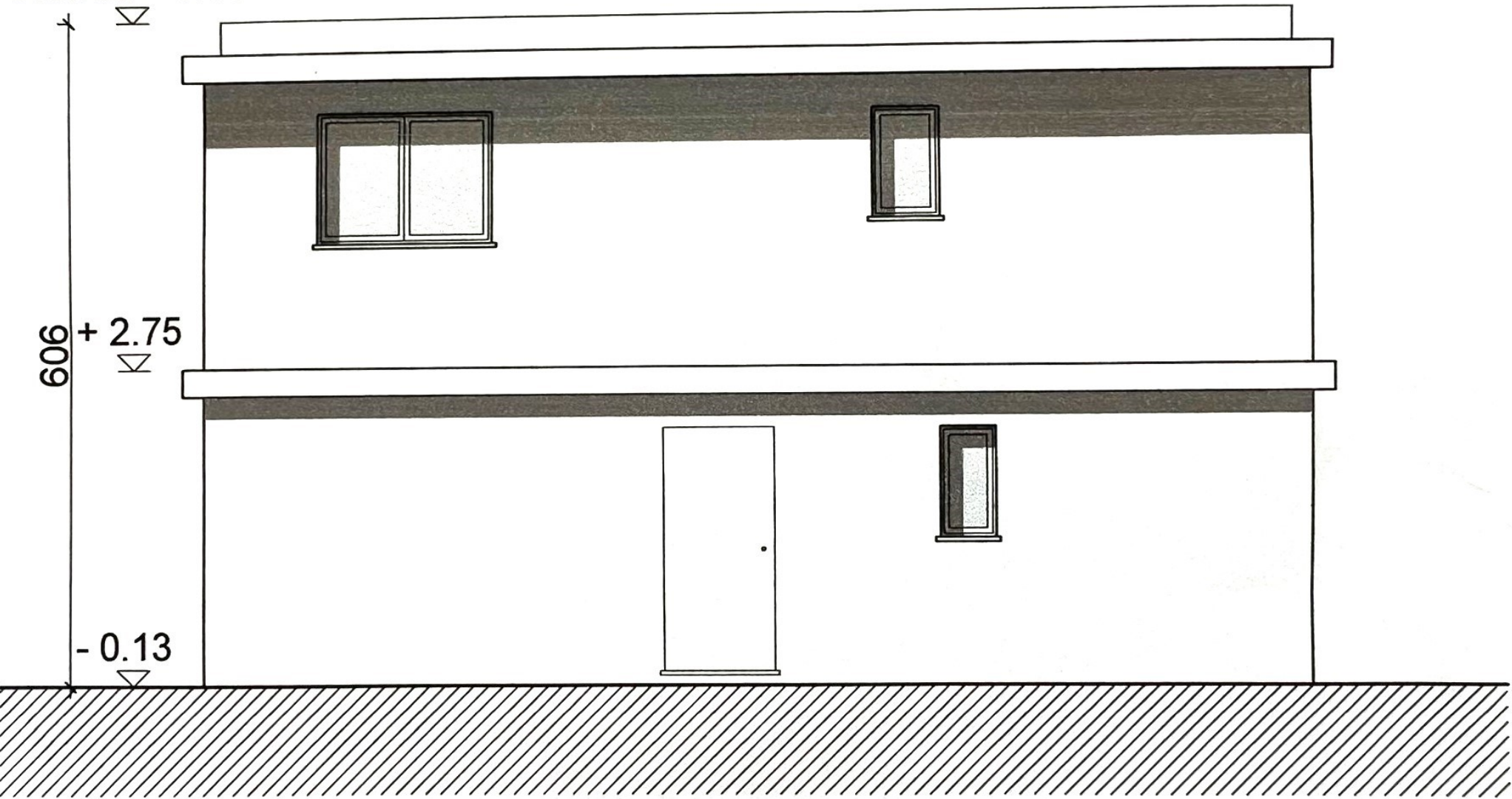
1:100



FACCIATA EST

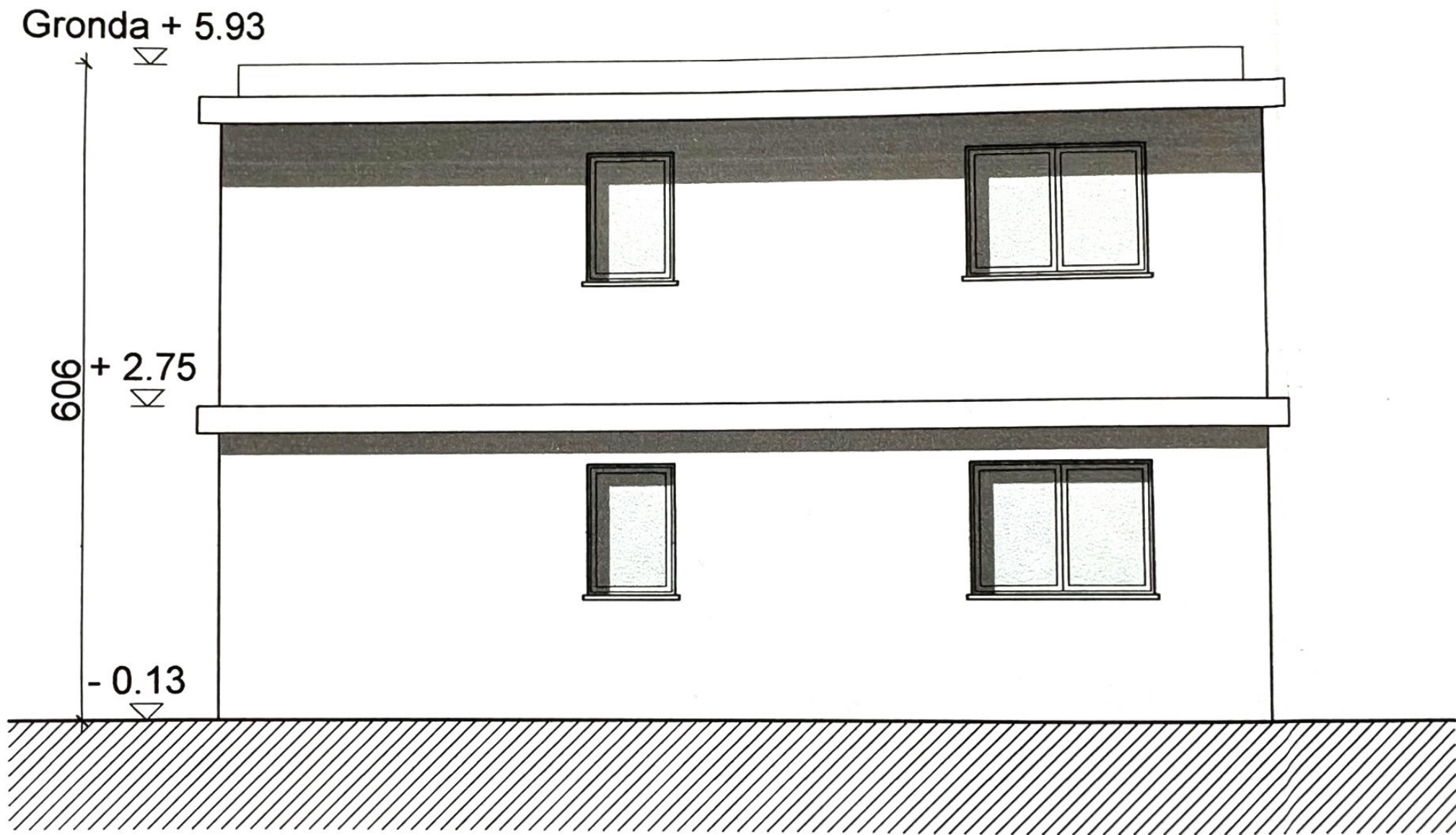
1:100

Gronda + 5.93



FACCIATA NORD

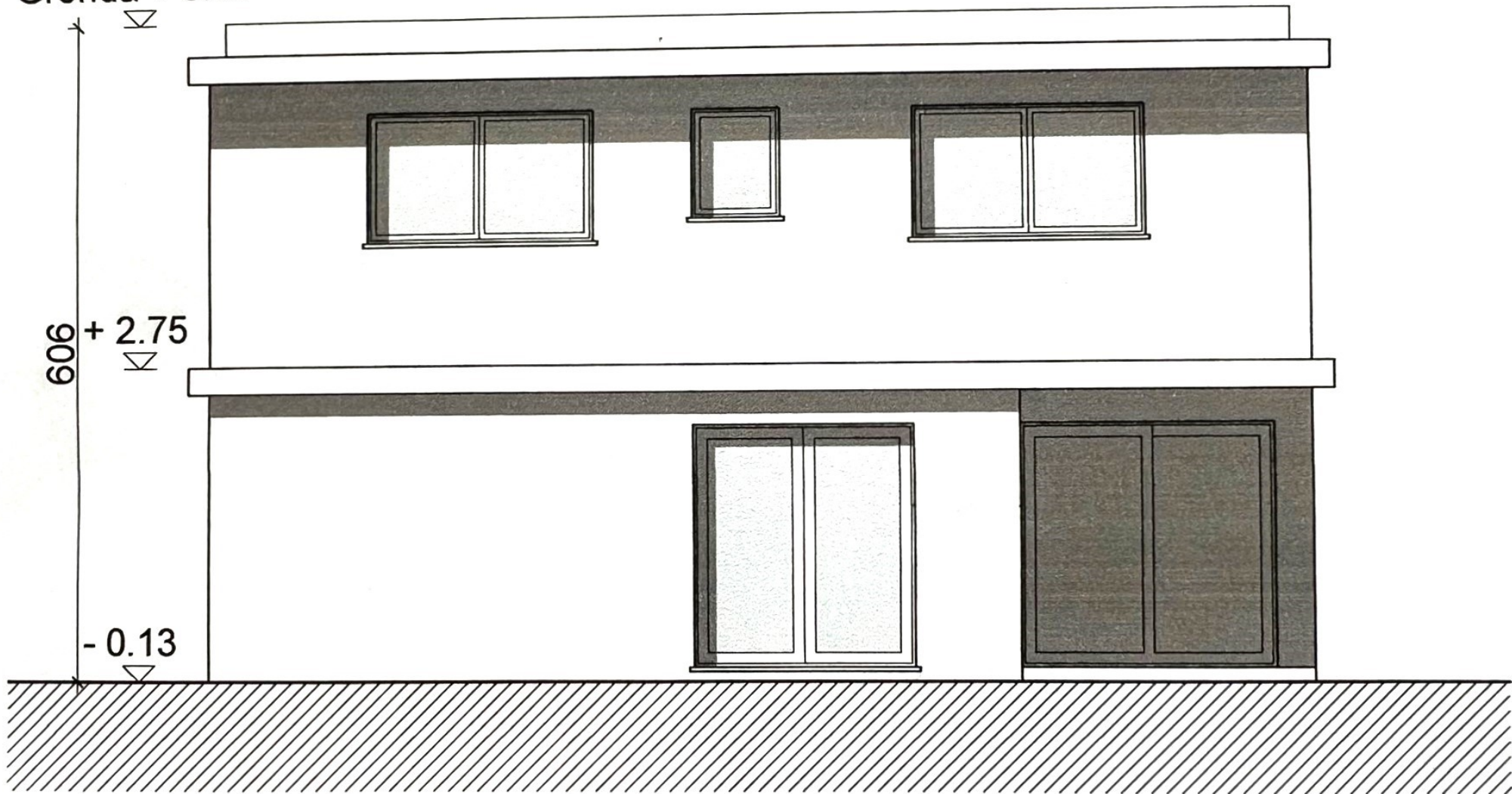
1:100



FACCIATA OVEST

1:100

Gronda + 5.93



FACCIATA SUD

1:100