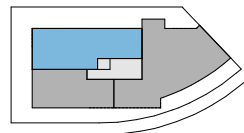
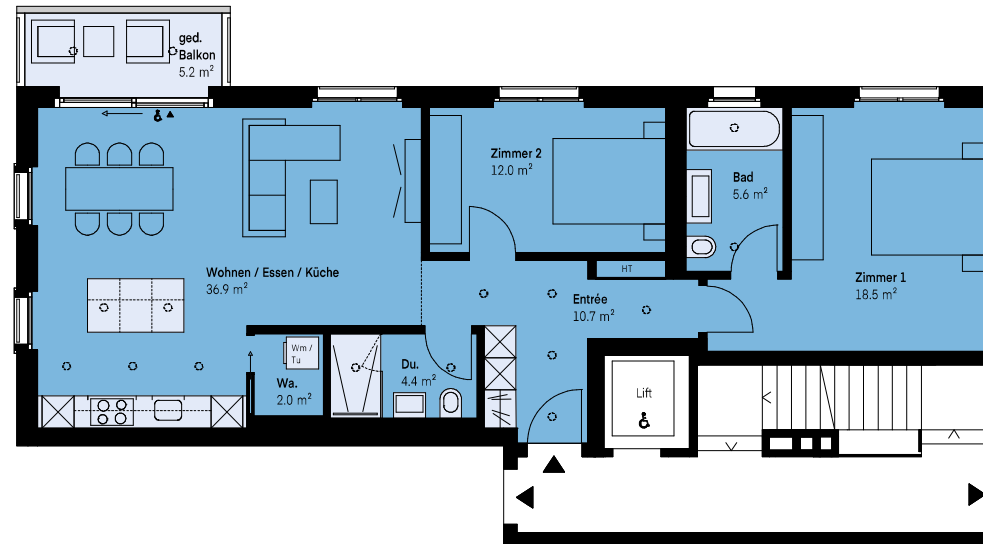


WOHNUNG 5

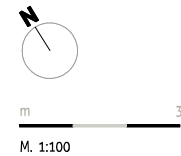
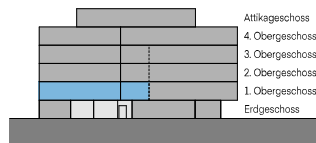
3½ ZIMMER

1. OBERGESCHOSS

- WOHNFLÄCHE***
95 m²
- BALKON**
5.2 m²



Baumackerstrasse



* Alle Flächenangaben der Wohnungen in BWF (Bruttowohnfläche); d.h. inklusive Schächte und innere Trennwände