

G 1.4

3.5 ZIMMER-WOHNUNG | 3.5 PIECES

G 2.4

HAUS G | BATIMENT G

G 3.4

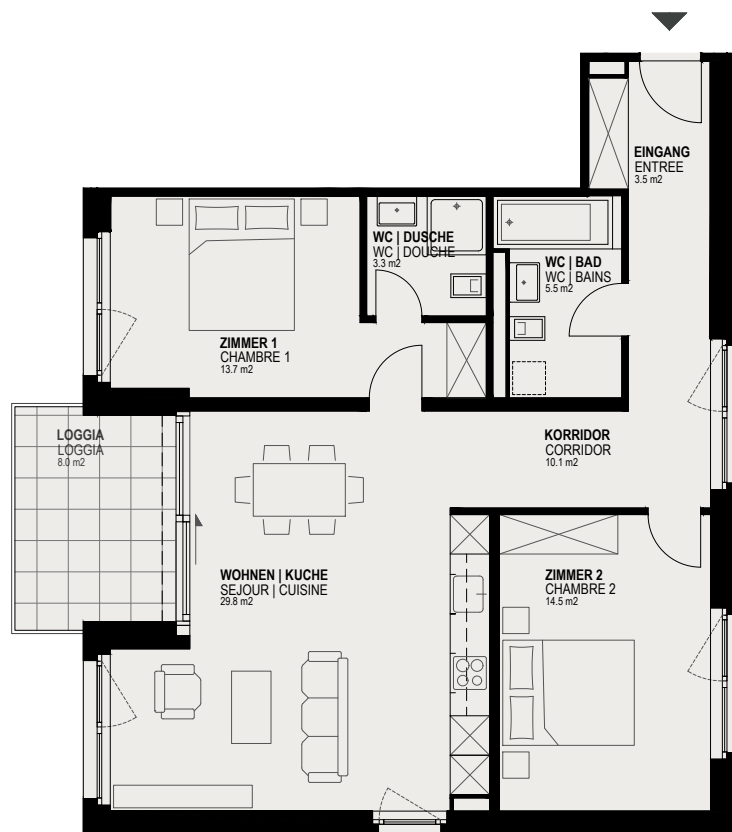
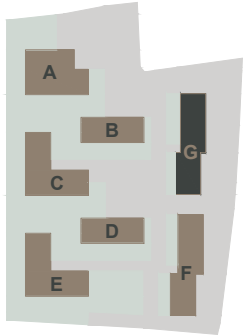
OBERGESCHOSS : 1-3 | ETAGES : 1-3

Brutto Wohnfläche | Surface brute habitable

99.5 m²

Loggia | Loggia

8.0 m²



Maßstab | Echelle

