

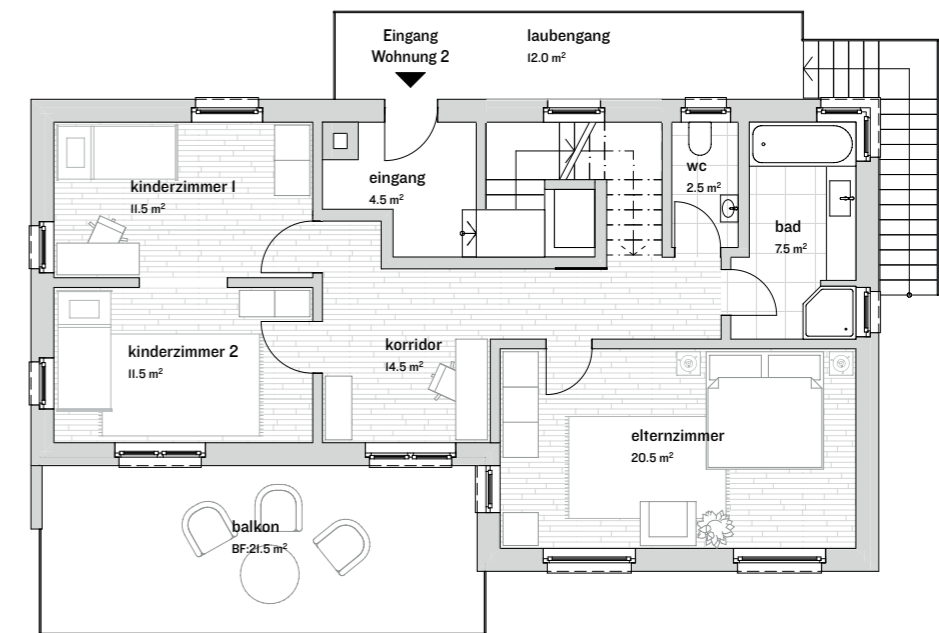


Situationsplan

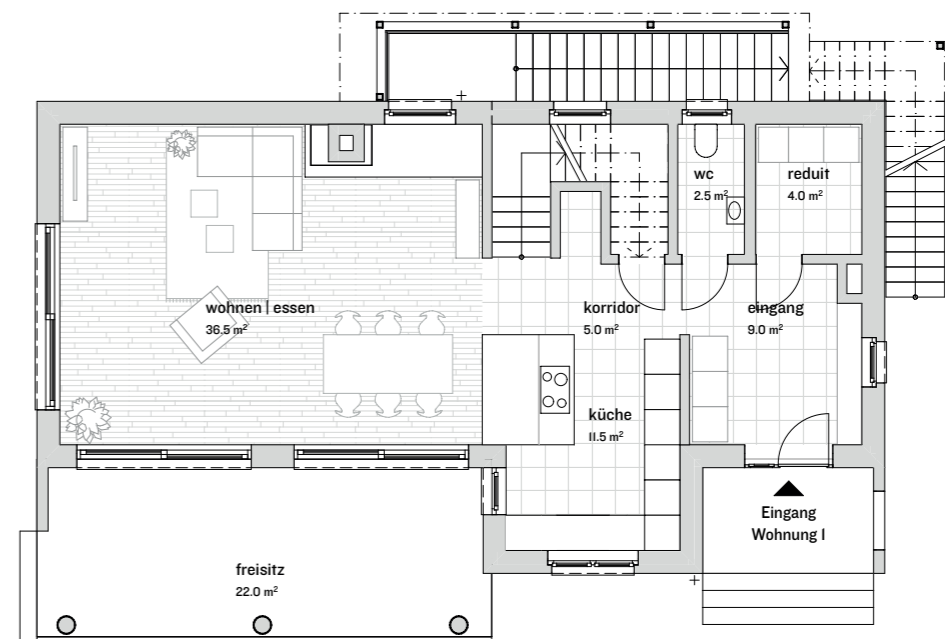
Wohnhaus
Aeschistrasse 3, 4558 Winistorf

Grundsücksfläche: 1160.0 m²
 Wohnfläche: 136.5 m²
 Kellerfläche: 74.5 m²
 Zimmer: 4.5
 Baujahr: 2002

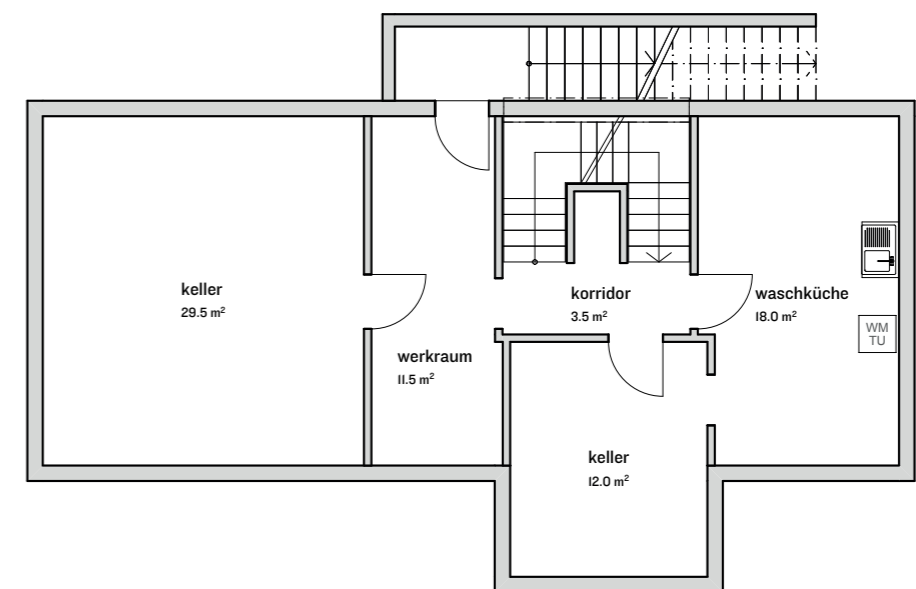
 Sanierung: 2022



Obergeschoss



Erdgeschoss



Untergeschoss