

I. Inhaltsverzeichnis

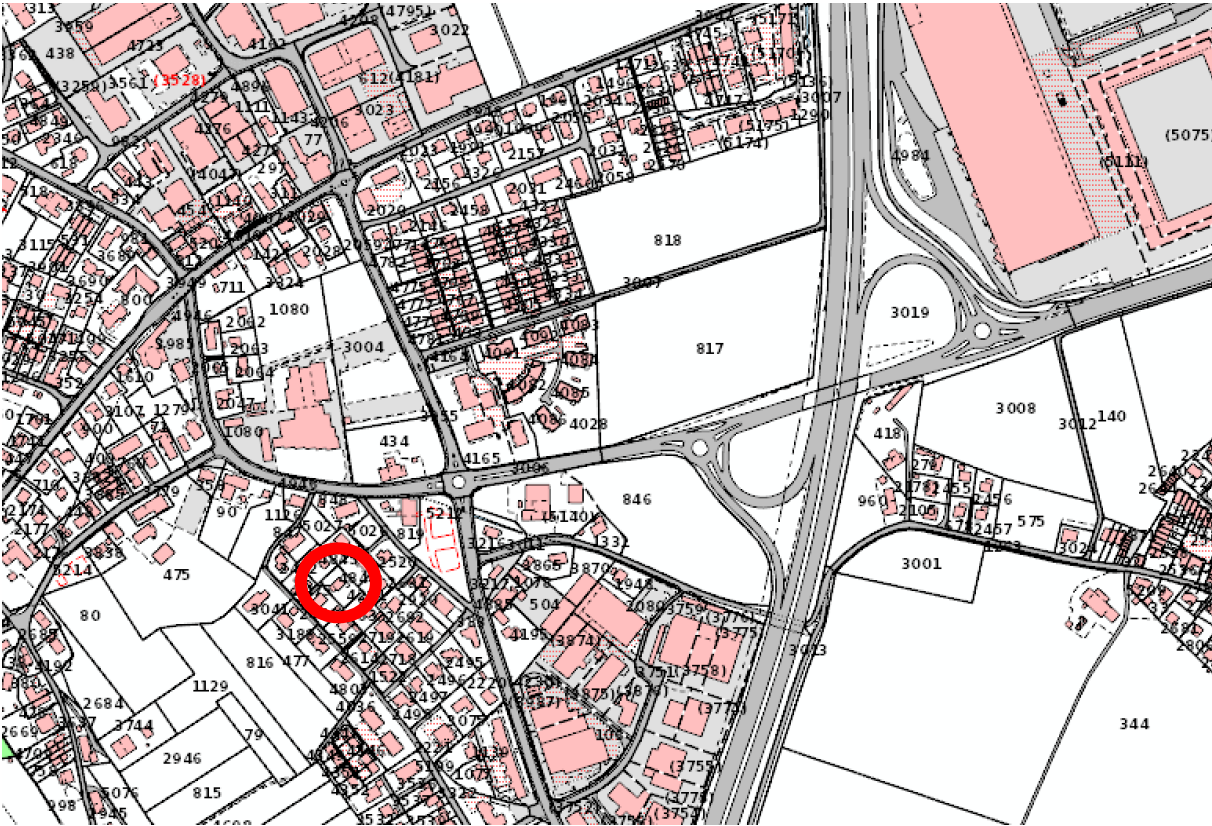
1	<i>Lagepläne und Gebäudepläne</i>	3
1.1	Bezirk Thun – Makrolage	3
1.2	Dorf Allmendingen	4
1.3	Quartier Zuberweg	5
1.4	Katasterplan	6
1.5	Untergeschoss	7
1.6	Erdgeschoss	8
1.7	Obergeschoss	9
1.8	Schnitt	10

1 Lagepläne und Gebäudepläne

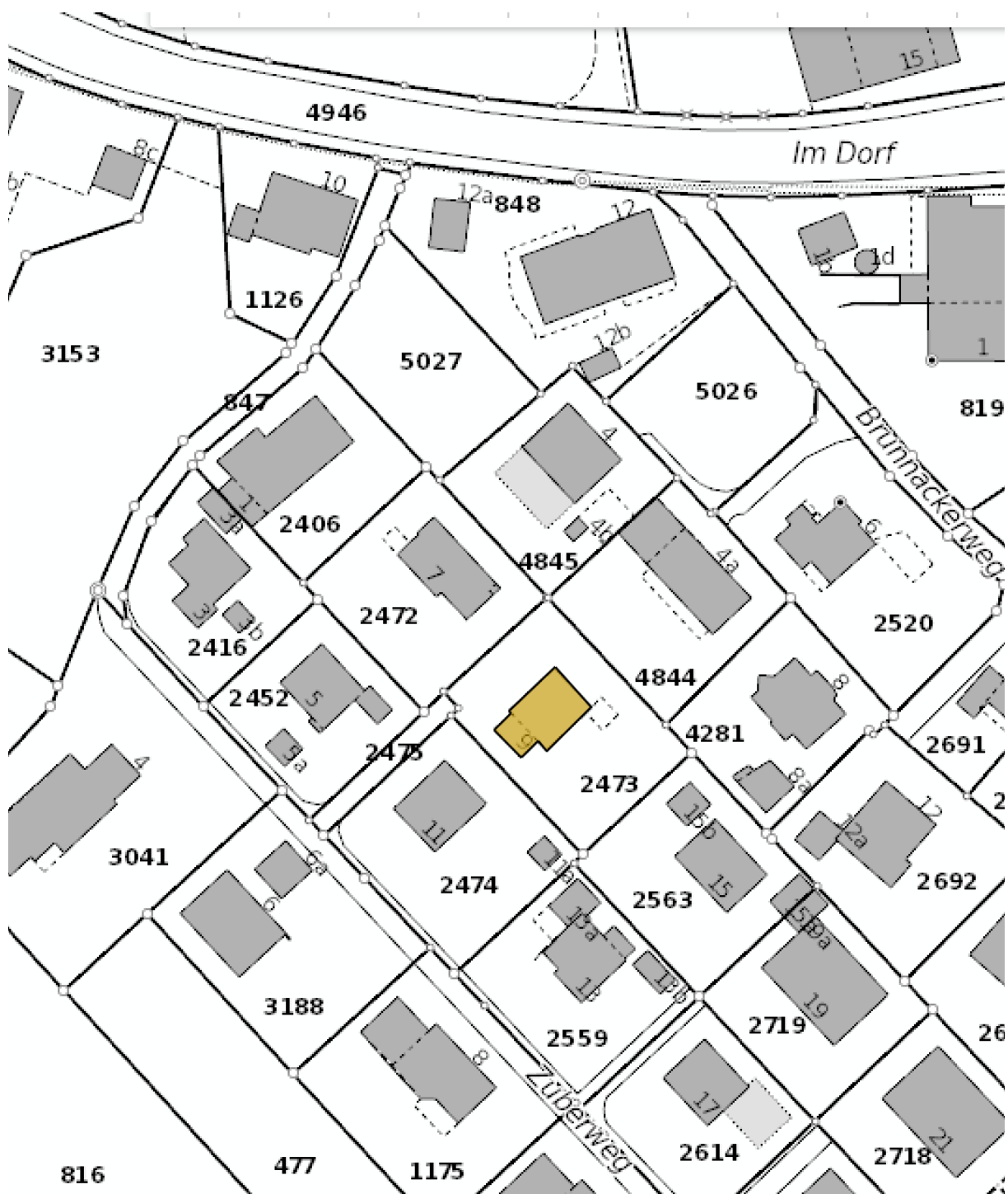
1.1 Bezirk Thun – Makrolage



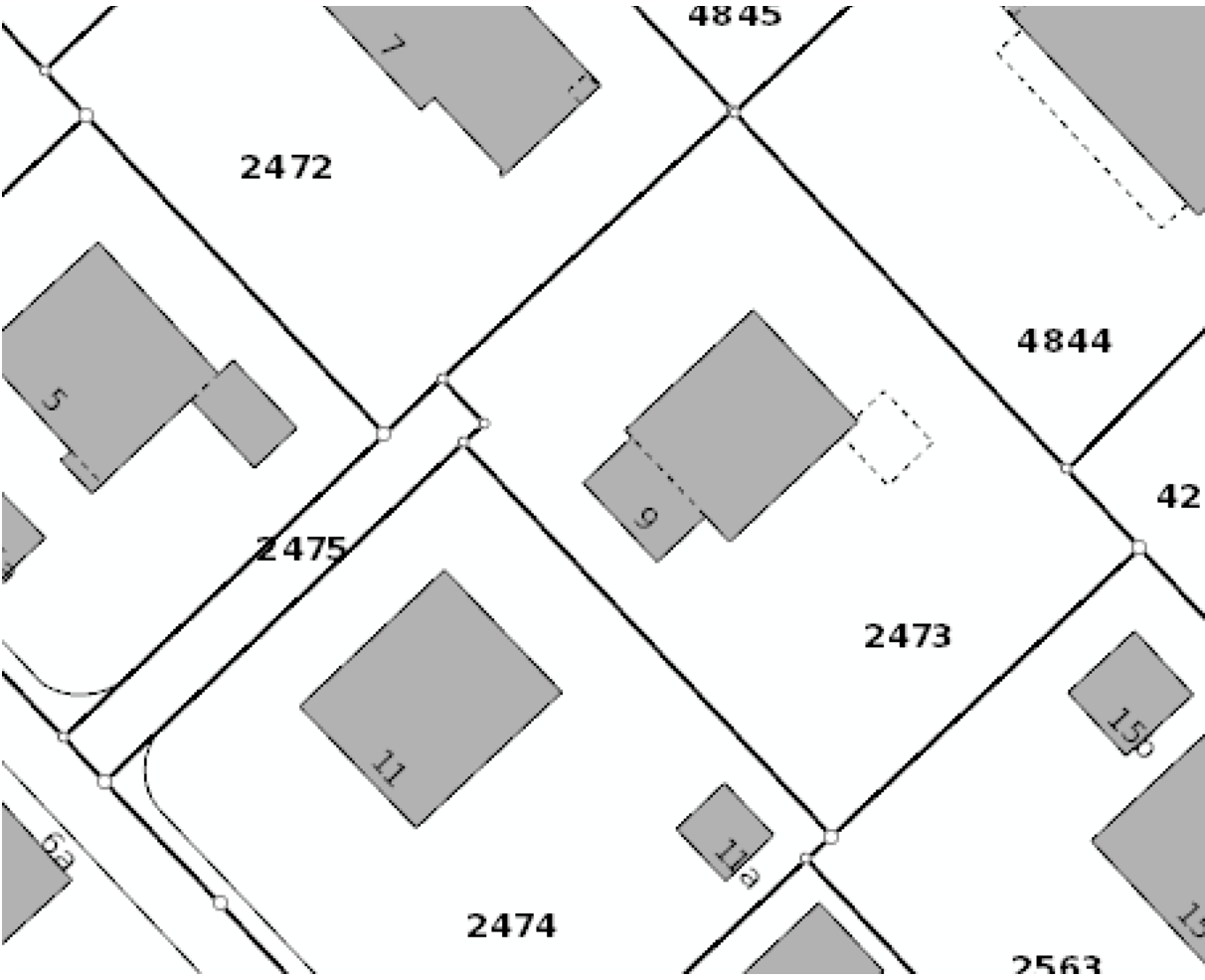
1.2 Dorf Allmendingen



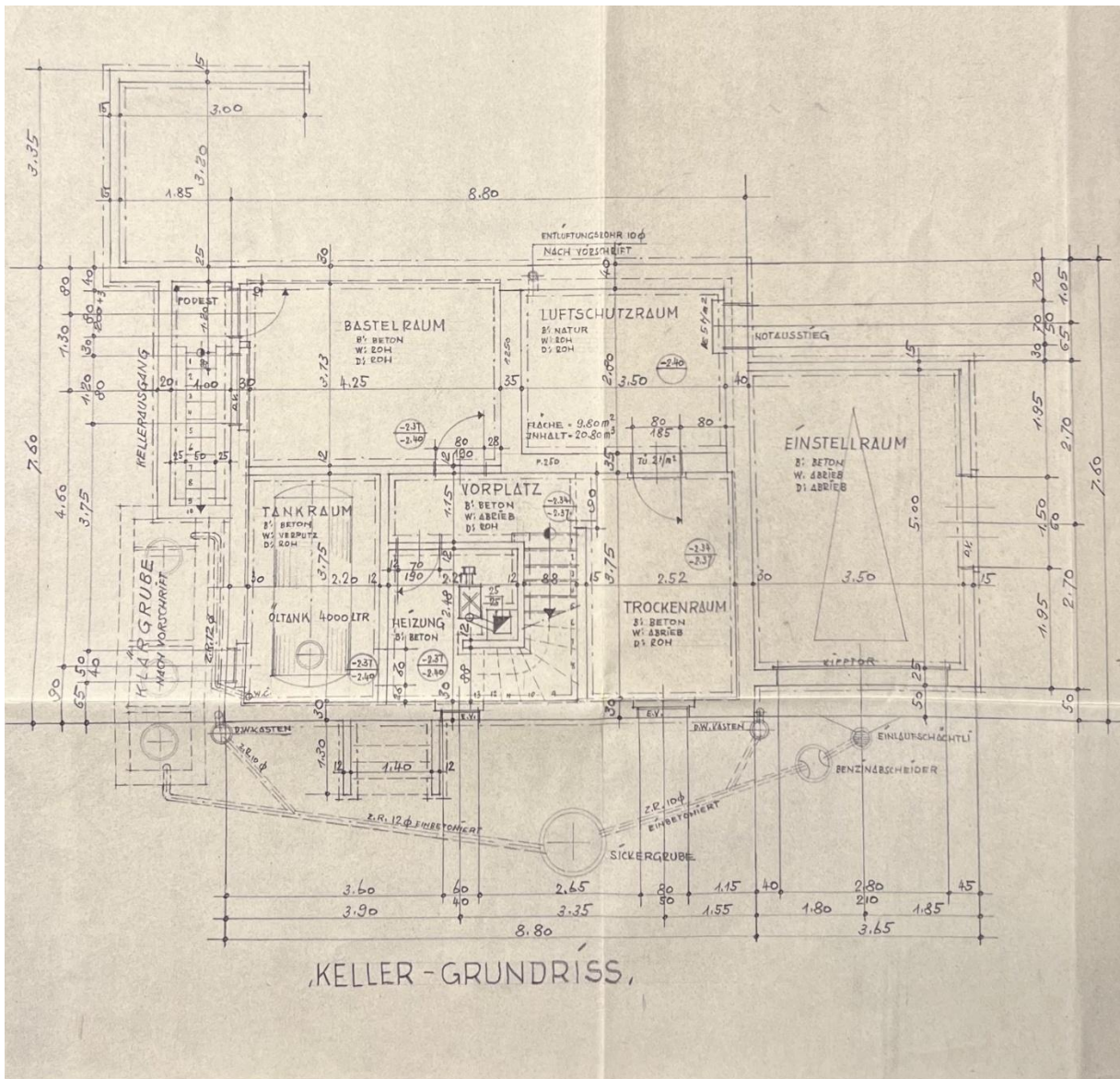
1.3 Quartier Zuberweg



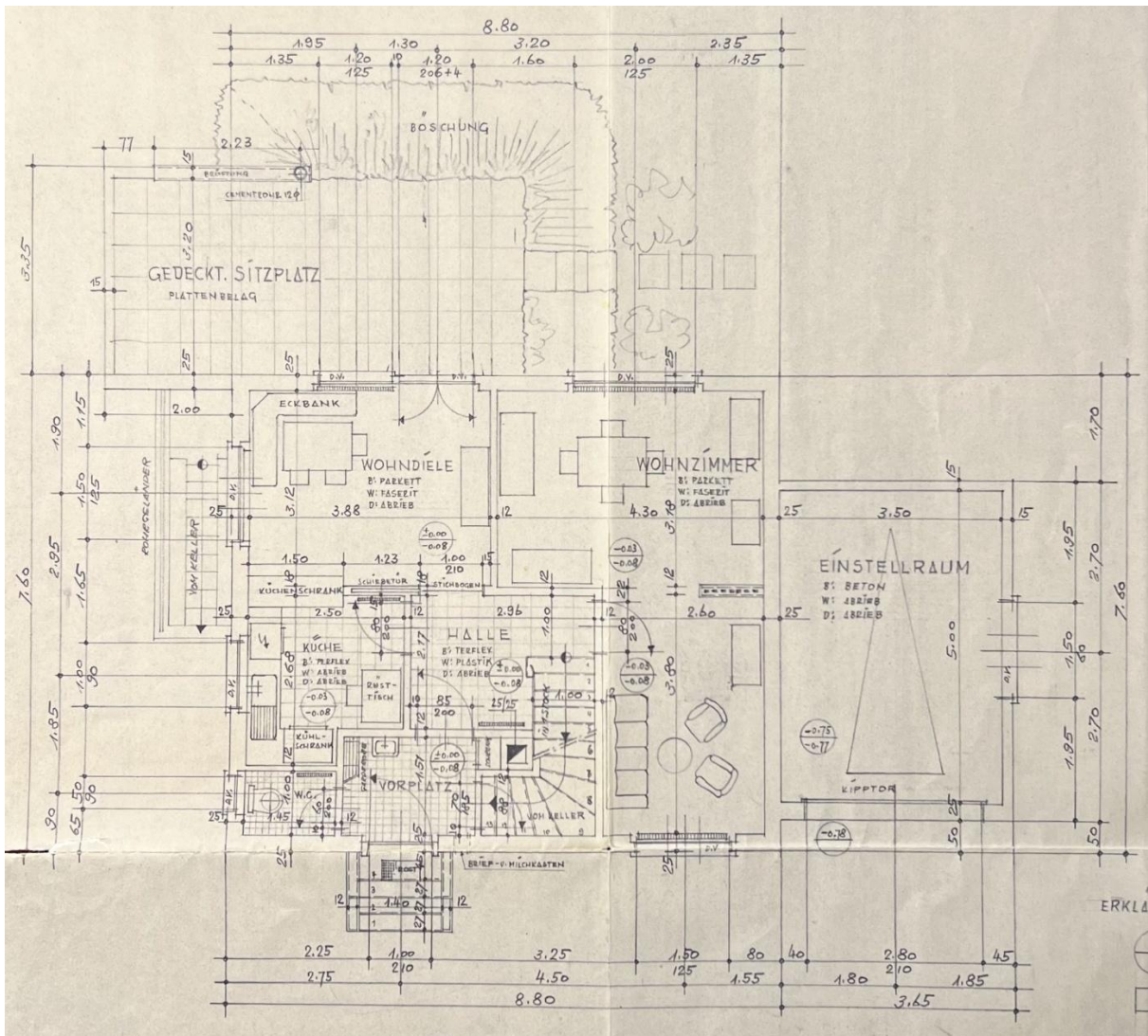
1.4 Katasterplan



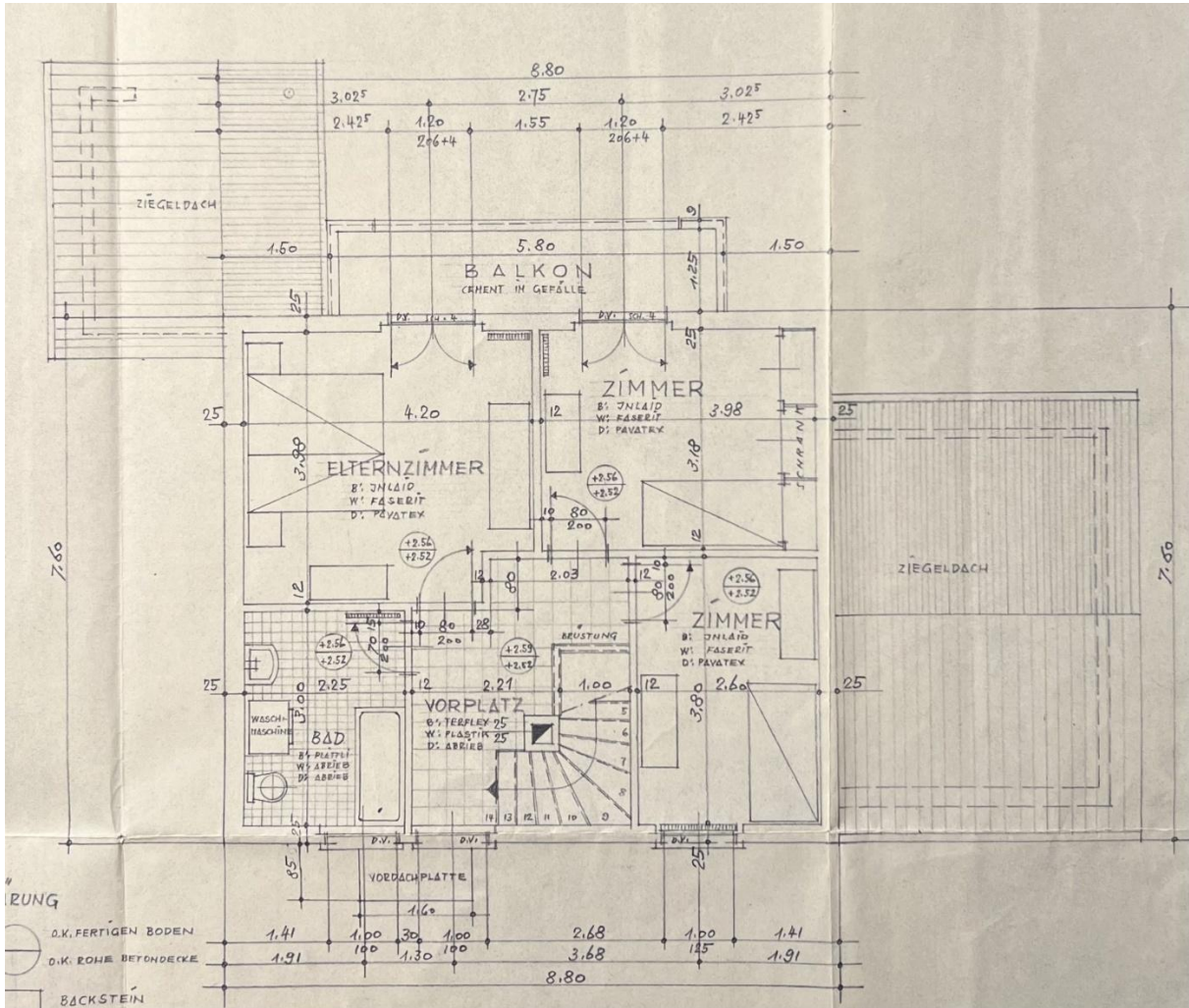
1.5 Untergeschoss



1.6 Erdgeschoss



1.7 Obergeschoss



1.8 Schnitt

