

# Appartement C3

4<sup>1/2</sup> pièces


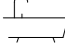
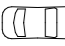

128.25 m<sup>2</sup> de surface habitable brute

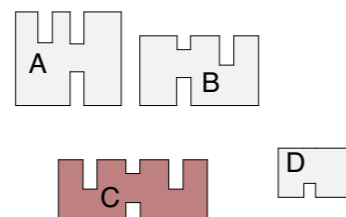
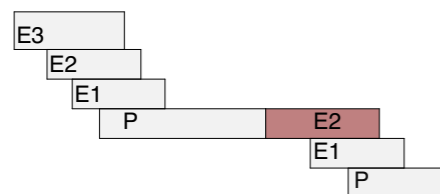
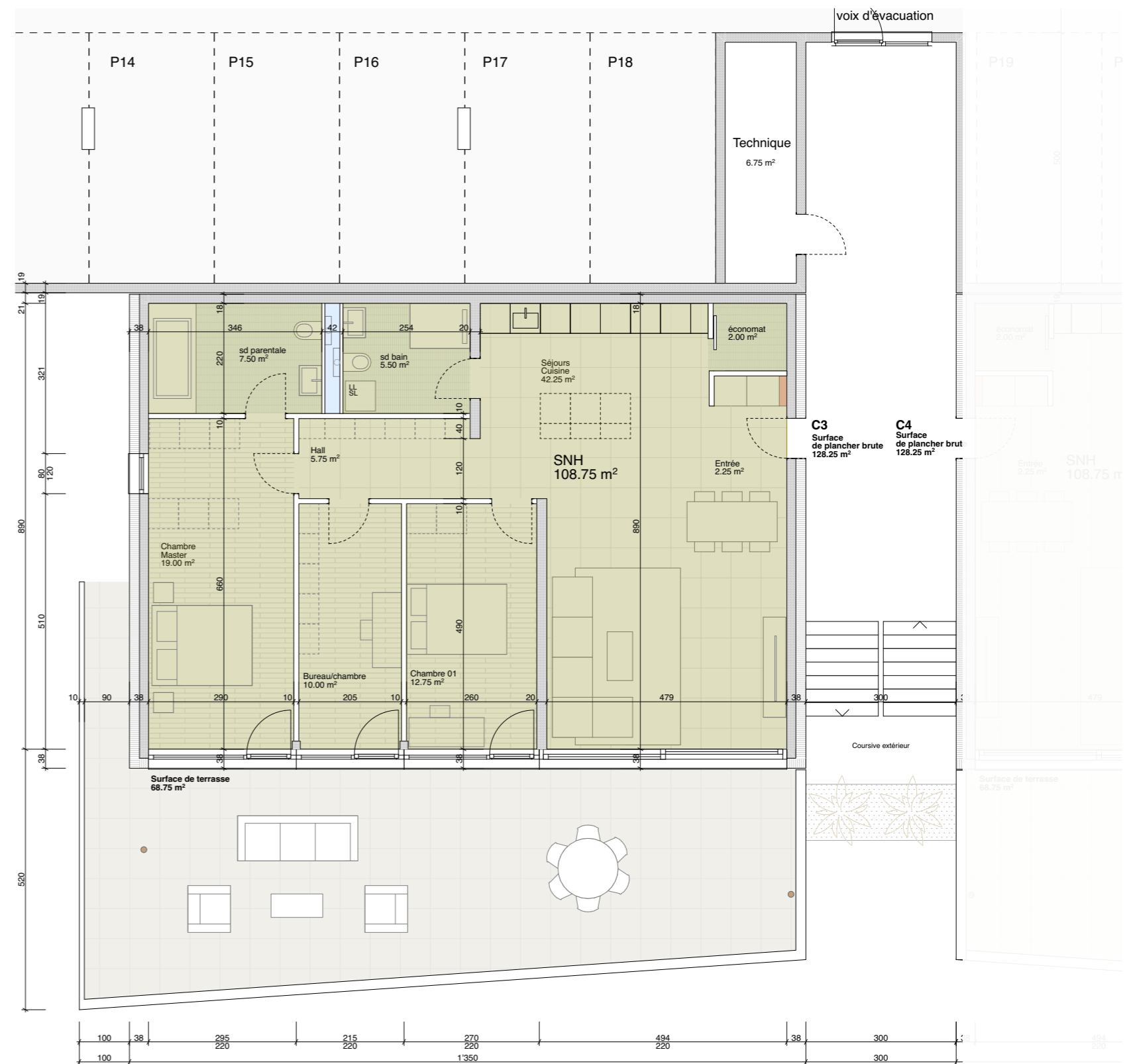
68.75 m<sup>2</sup> de surface de terrasse

0 m<sup>2</sup> de surface de verte

151.20 m<sup>2</sup> de surface de vente (brute pondéré)

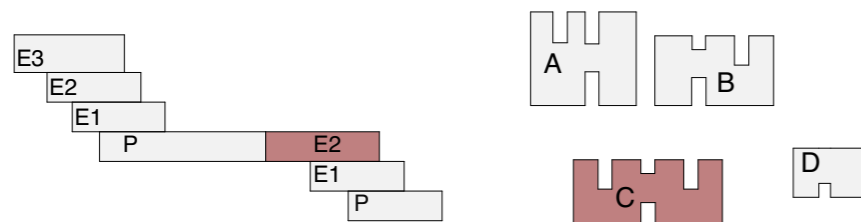
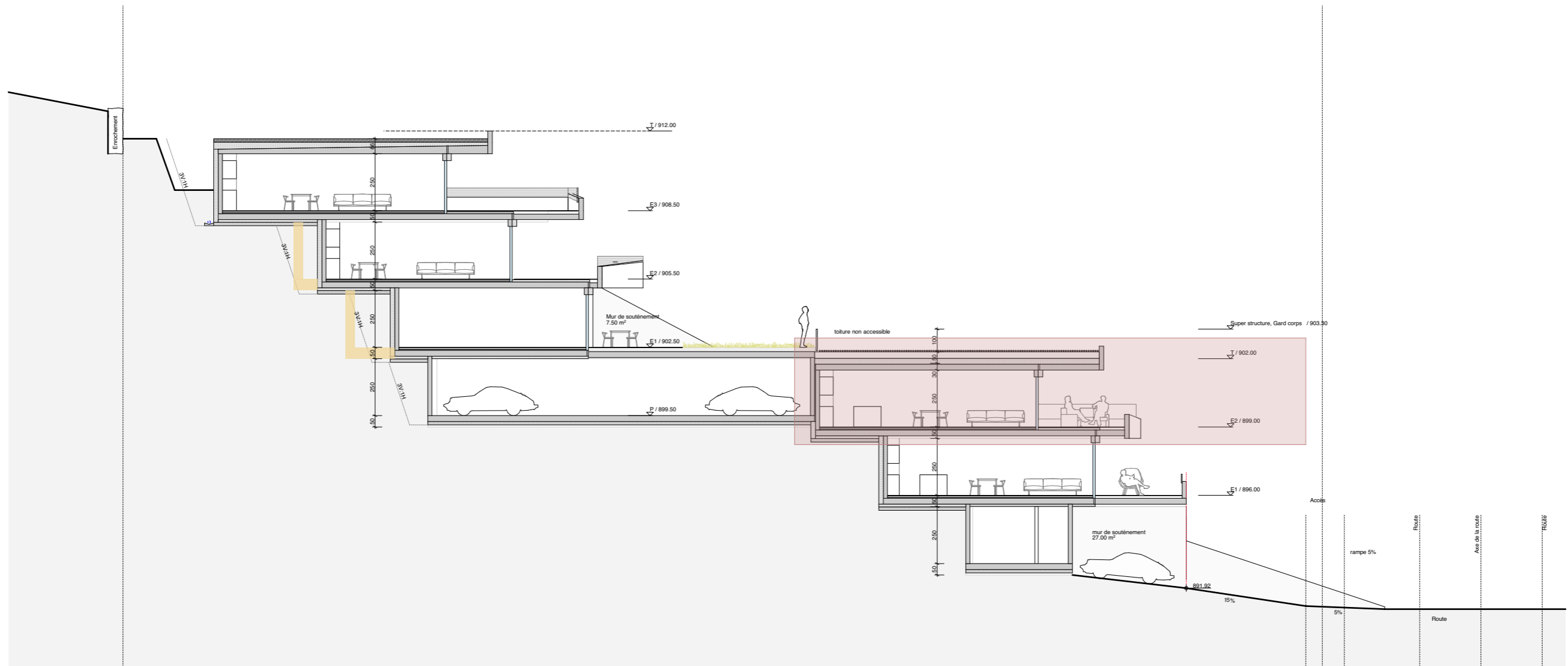
(Surface habitable brute + 1/3 terrasse)

-  3 chambres, séjour, cuisine et coin à manger
-  2 salles d'eau
-  2 places de parking intérieur (Obligatoire en sus)  
CHF 35'000.- par place intérieur
-  1 cave



# Appartement C3

4<sup>1/2</sup> pièces



Appartement C3 coupe

**Projet Green-Line**  
Parcelle 891  
Rte de Combettaz, Savièse, Suisse

Architecte honei.ch	format A3	date 19.01.26	échelle 1:200
------------------------	--------------	------------------	------------------