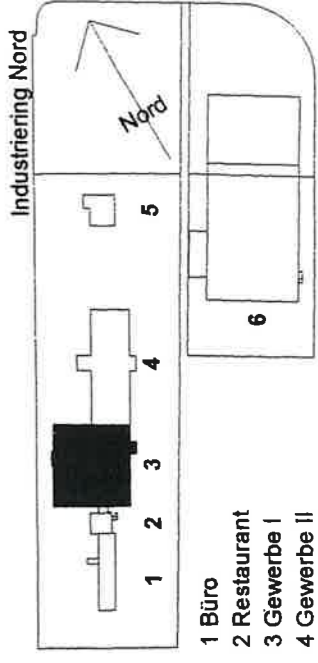
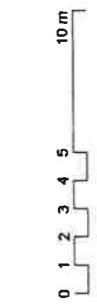
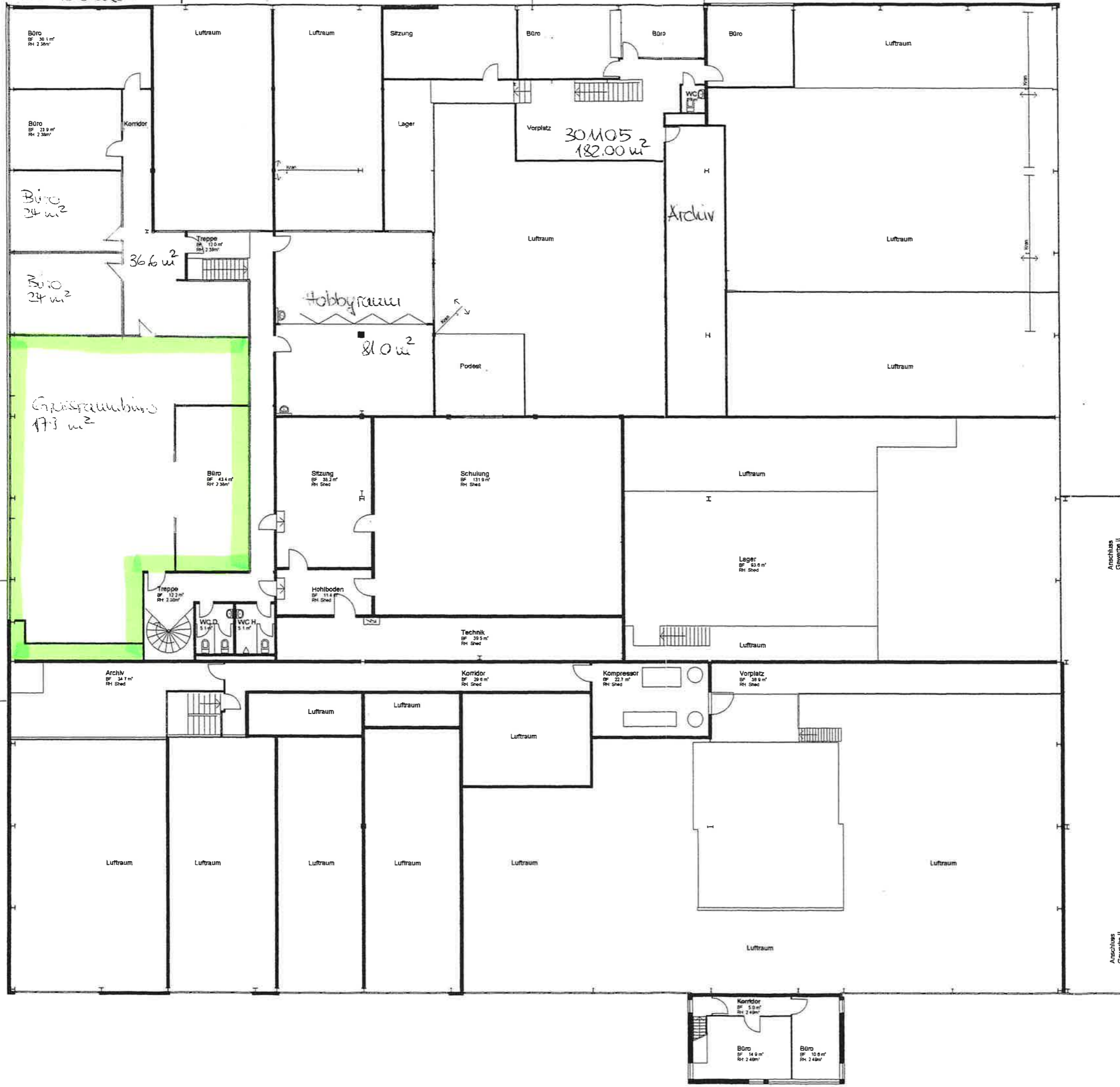



Gebäude 3, 1. OG



Business-Center, Lyss SGI Gewerbe I Grundriss Obergeschoss			branschi sattler steigerpartner AG Architekten und Planer Nikl. Konrad-Strasse 28 CH - 4500 Solothurn	Tel. 032 623 42 25 Fax 032 622 19 49	info@bssp.ch www.bssp.ch
	Dat. 18.01.2001 Mst. 1:200	Gr. A3 Auftrag Nr. 5617	Plan Nr. (3-102)		