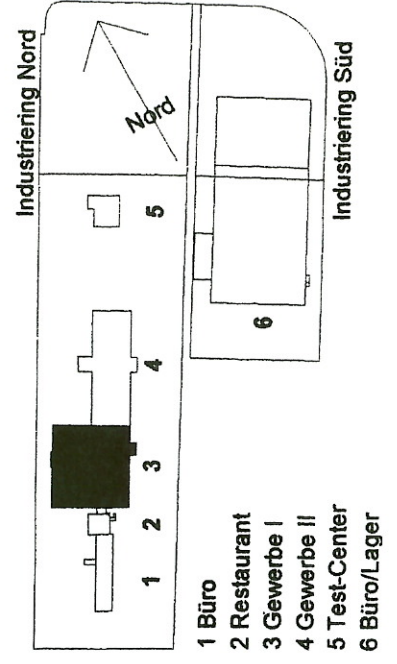
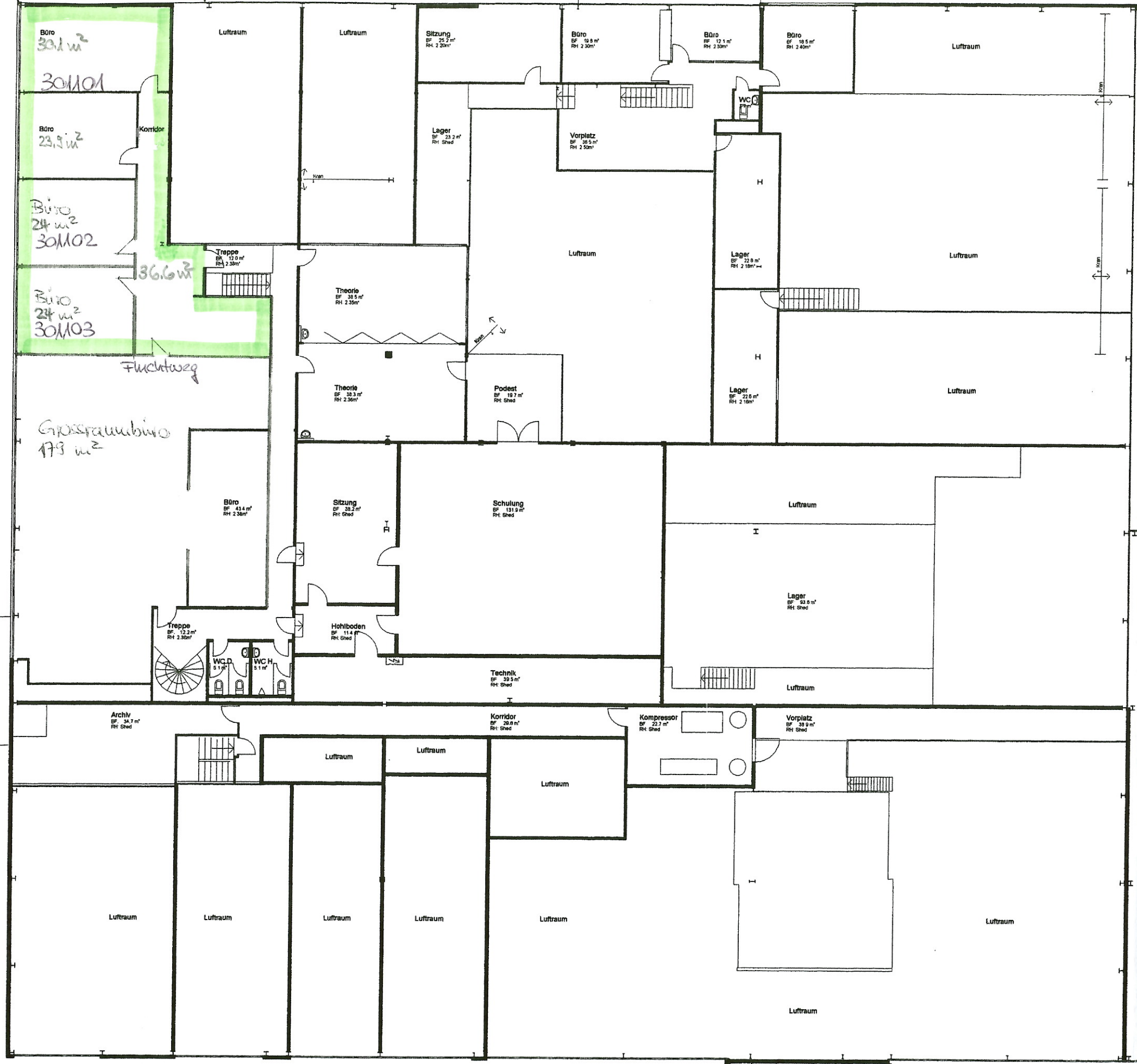



# Gebäude 3, 1. OG



	<b>branschi sätler steigerpartner AG</b> Architekten und Planer		Tel. 032 623 42 25 info@bsp.ch Fax 032 622 19 49 www.besp.ch	
	Nikl. Konrad-Strasse 28 CH - 4500 Solothurn		Gr. A3	
Dat. 18.01.2001		Auftr. Nr. 5617		Plan Nr. (3-102)
Met. 1:200		<b>Business-Center, Lyss</b> <b>SGI</b> <b>Gewerbe I</b> <b>Grundriss Obergeschoss</b>		

