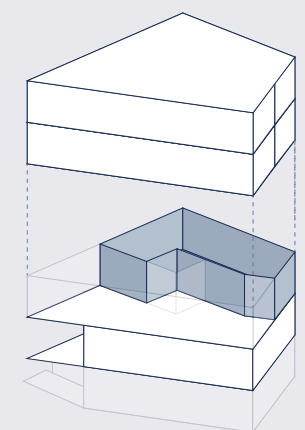
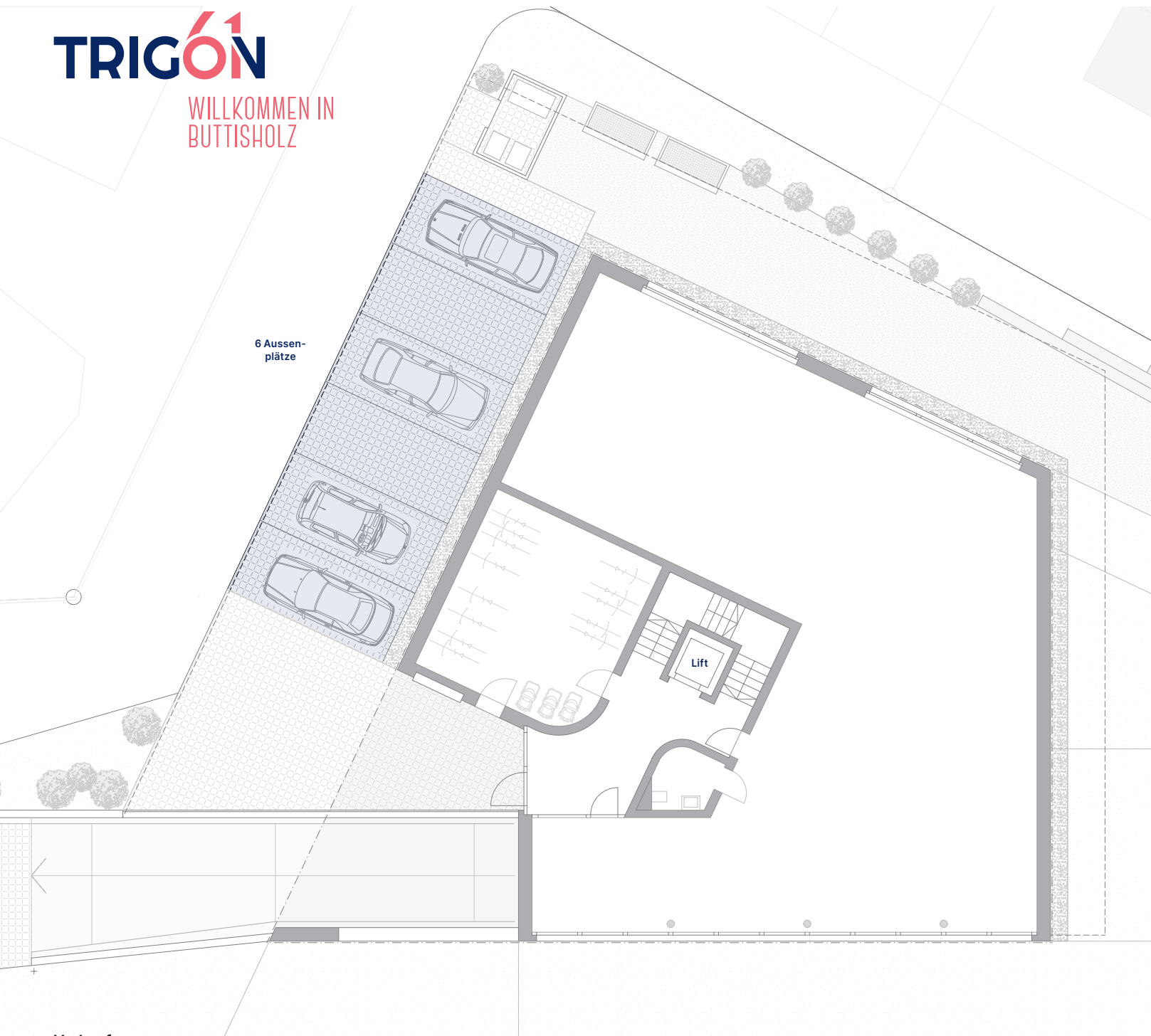


## 4 ½ ZIMMER

Stockwerk	1. OG
Nettowohnfläche	128 m <sup>2</sup>
Balkon	4.6 m <sup>2</sup>
Terrasse	25 m <sup>2</sup>





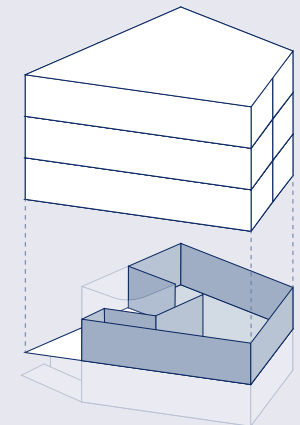
## PARKPLÄTZE AUSSEN

Stockwerk

EG

Parkplätze

6



## EINSTELLHALLE KELLER

Stockwerk	UG
Parkplätze	14
Velo	10

