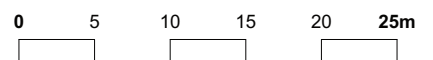


humbert

Situation

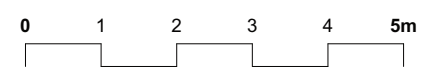


1:500



humbert

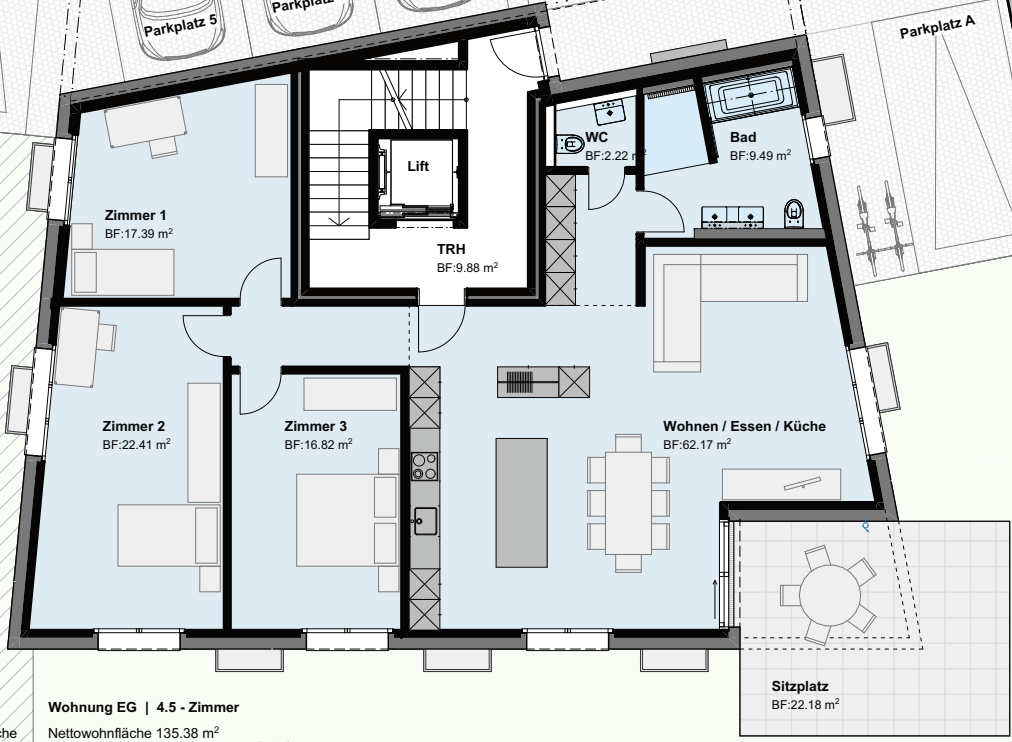
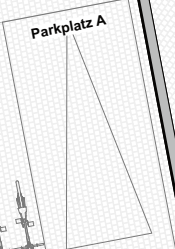
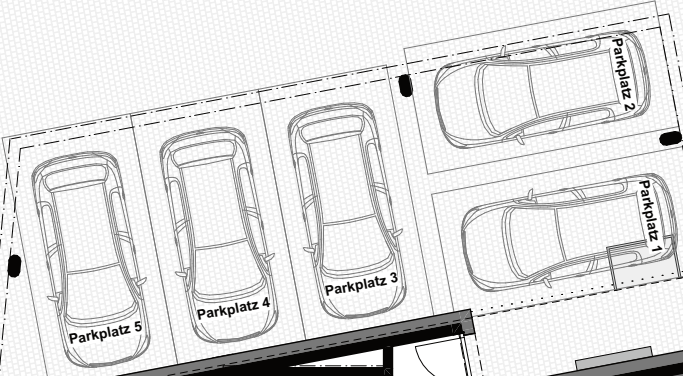
Untergeschoss



1:100

Parzelle 2467

Parzelle 1922



Parzelle 3586

humbert

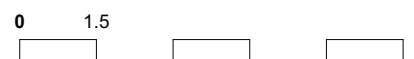
Spiel- / Aufenthaltsfläche nach Bedarf 78.97 m²

Wohnung EG | 4.5 - Zimmer
Nettowoohnfläche 135.38 m² (ohne Aussenwände, inkl. Innenwände)
Privater Rasenanteil 192.22 m²

Parzelle 2770

Parzelle 3695

Erdgeschoss mit Umgebung



1:150



humbert

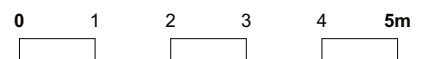
Wohnung OG West | 3.5 - Zimmer

Nettowoohnfläche 94.33 m²
(ohne Aussenwände, inkl. Innenwände)

Wohnung OG Südost | 3.5 - Zimmer

Nettowoohnfläche 101.39 m²
(ohne Aussenwände, inkl. Innenwände)

Obergeschoss



1:100

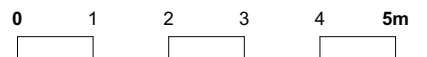


humbert

Wohnung Attika | 4.5 - Zimmer

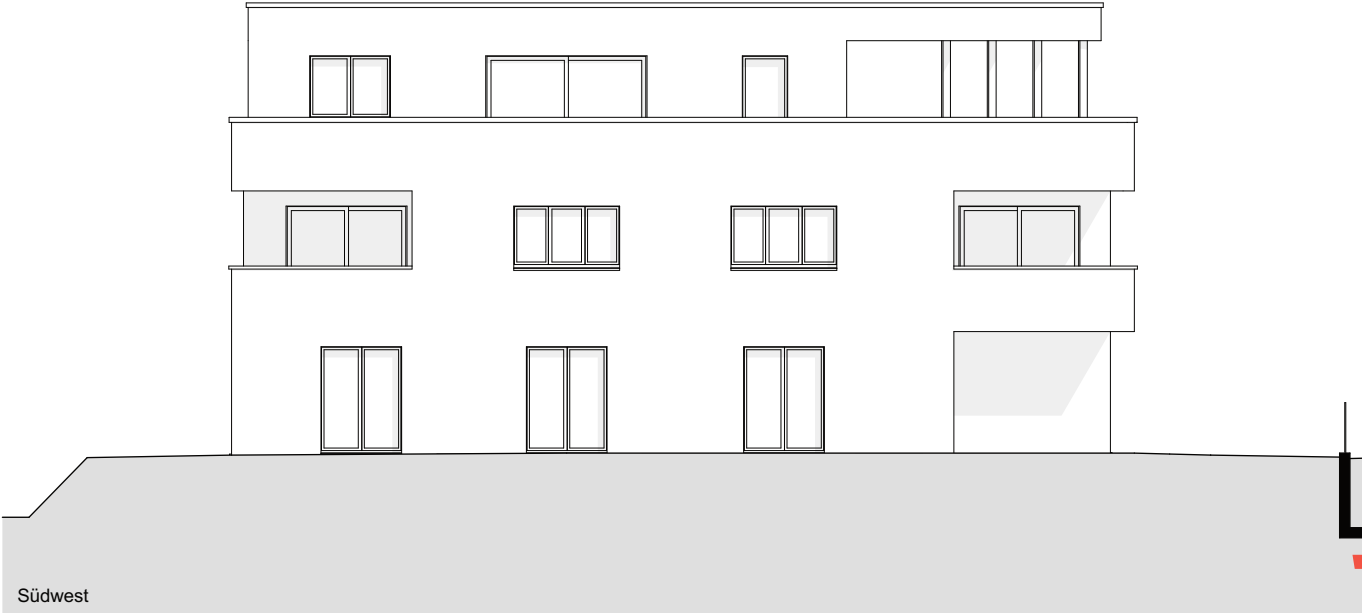
Nettowoohnfläche 122.83 m²
(ohne Aussenwände, inkl. Innenwände)

Attika

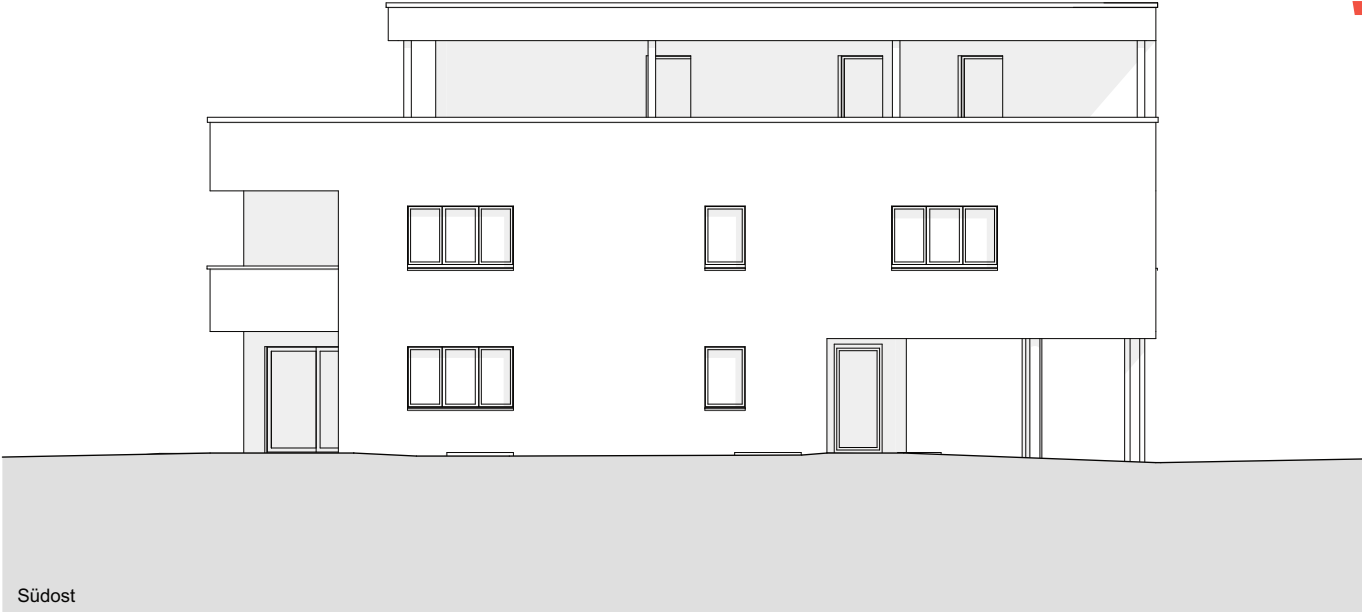


1:100

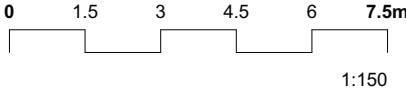
FASSADENPLÄNE



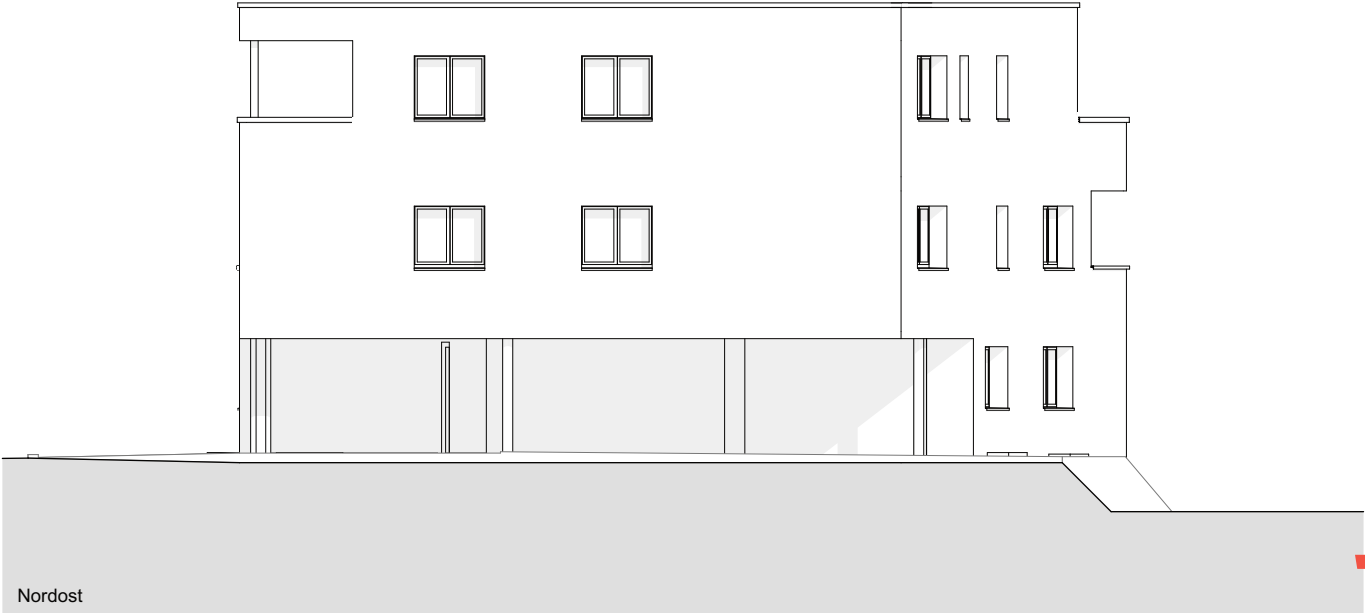
humbert



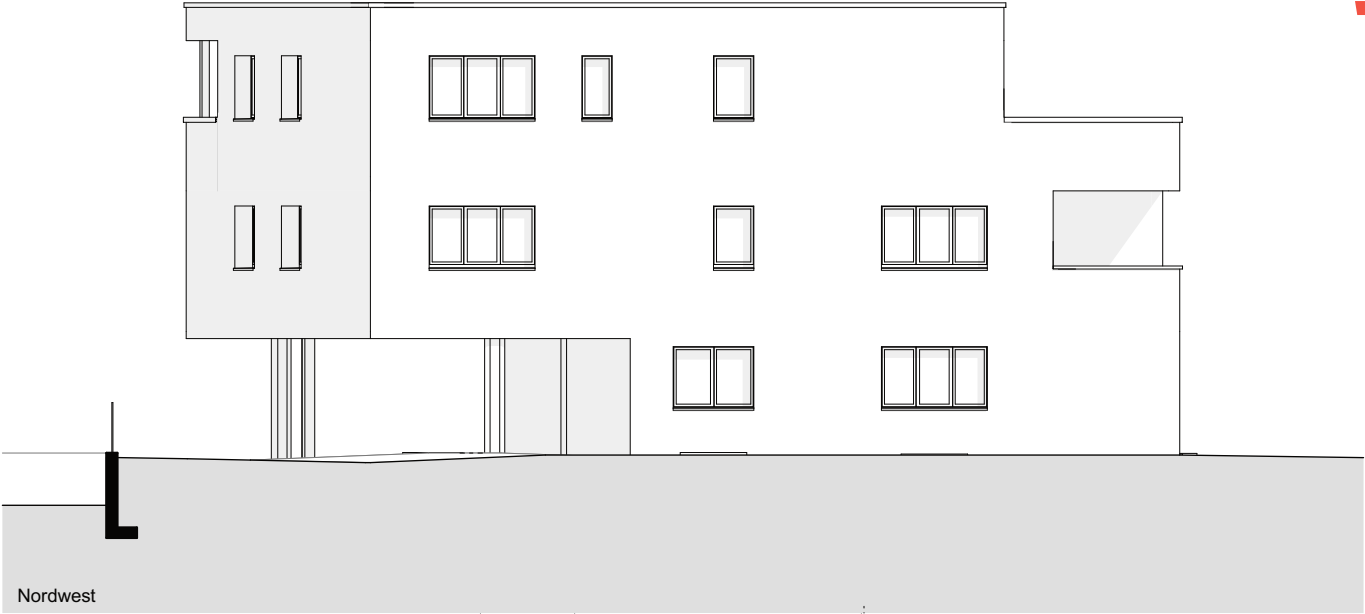
Fassaden 1



FASSADENPLÄNE



humbert



Fassaden 2

