

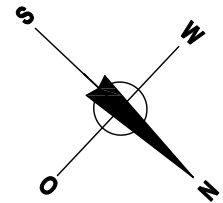
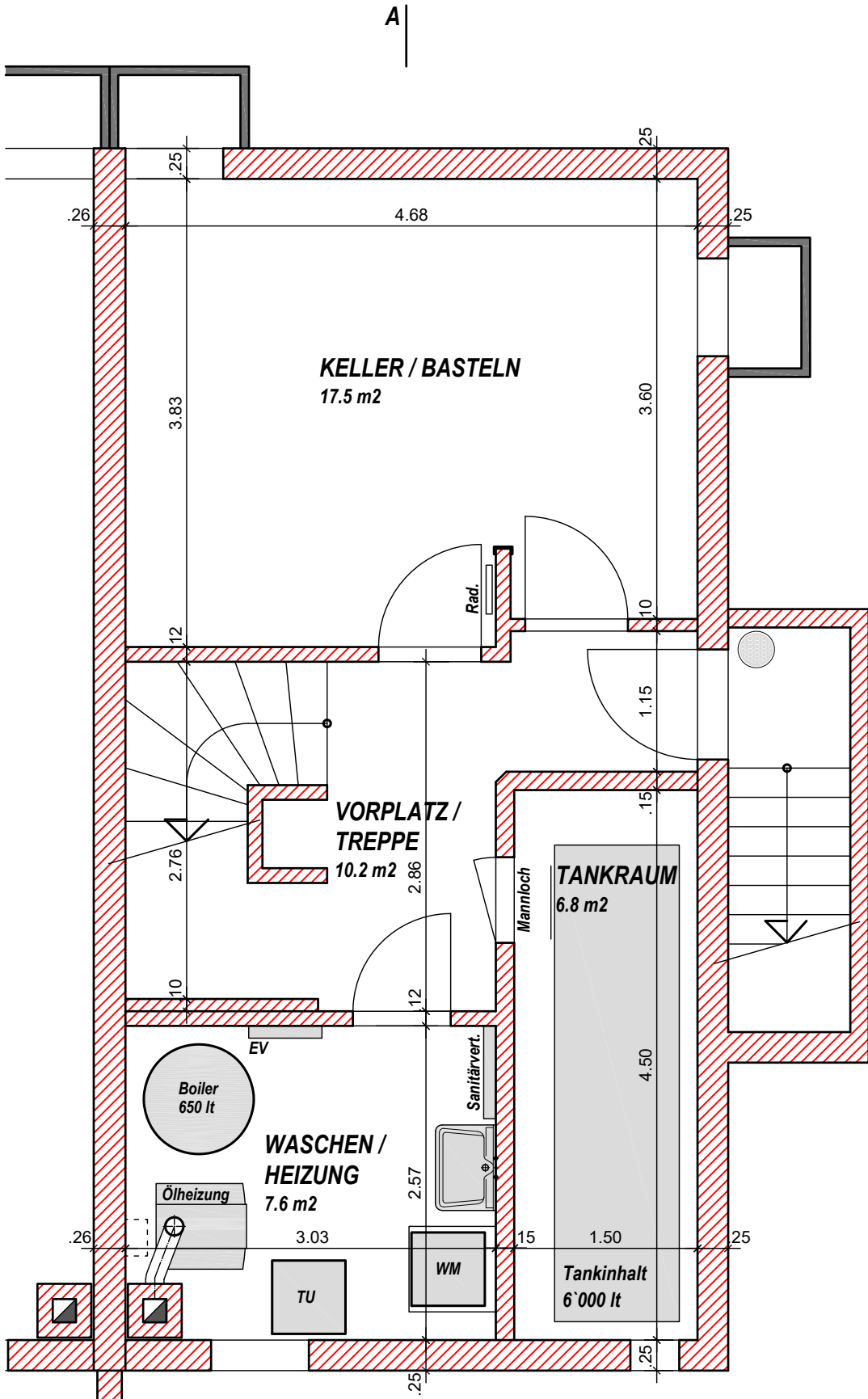
**5 1/2 - ZIMMER - REFH
BALLMOOSWEG 6d
3033 WOHLLEN b. Bern**

UNTERGESCHOSS MST. 1:50

REPRO.: 27.04.2026 ns

RAUMPROGRAMM

- VORPLATZ / TREPPE	10.2 M2
- WASCHEN / HEIZUNG	7.6 M2
- TANKRAUM	6.8 M2
- KELLER / BASTELN	17.5 M2
- TOTAL	42.1 M2



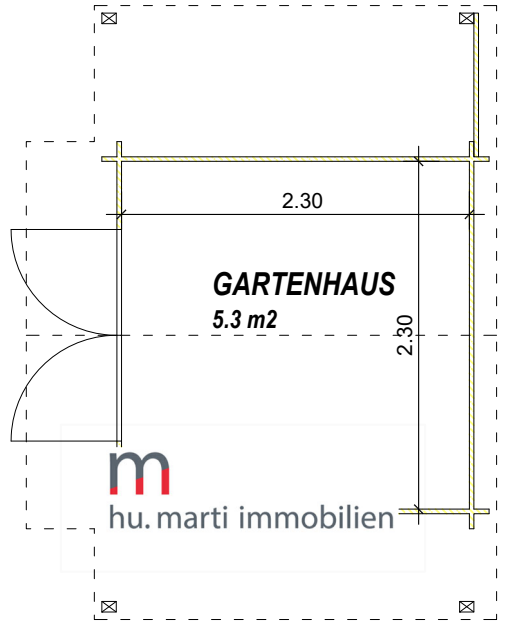
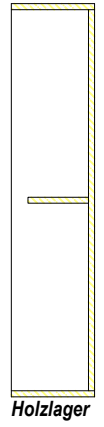
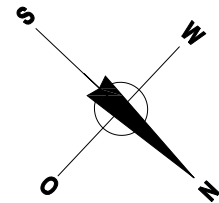
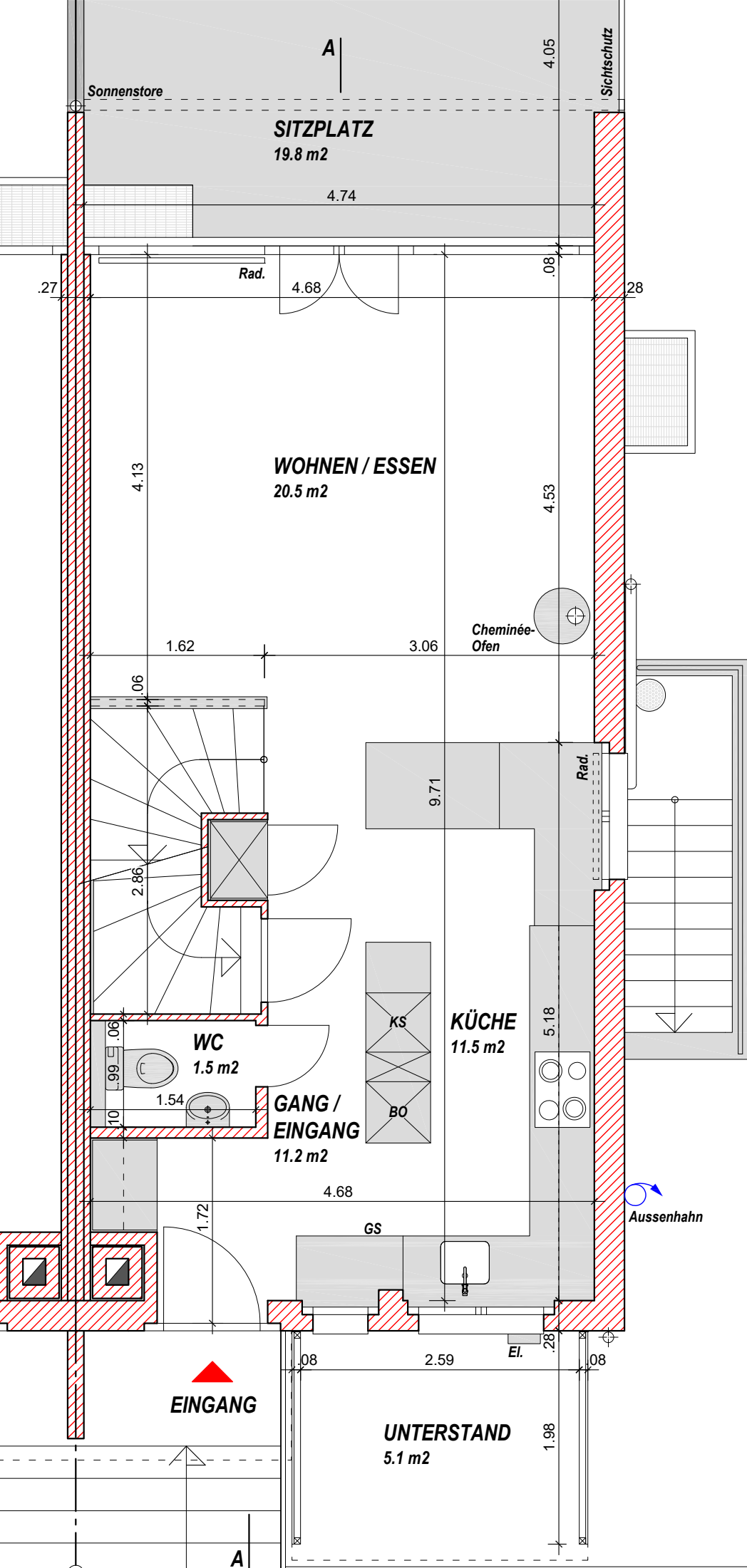
**5 1/2 - ZIMMER - REFH
BALLMOOSWEG 6d
3033 WOHLLEN b. Bern**

ERDGESCHOSS MST. 1:50

REPRO.: 27.04.2026 ns

RAUMPROGRAMM

- GANG / EINGANG	11.2 M2
- WC	1.5 M2
- KÜCHE	11.5 M2
- WOHNEN / ESSEN	20.5 M2
- TOTAL	44.7 M2
- SITZPLATZ	19.8 M2
- GARTENHAUS	5.3 M2
- UNTERSTAND	5.1 M2
- TOTAL	30.2 M2



Sonnenstoren-Kasten

A

4.74

BALKON
5.9 m²

1.25
0.08

Rad. Schiebefenster
4.68

.27

.28

4.11

ZIMMER 2
19.2 m²

4.11

.06

2.62

.06

2.00

.17

2.87

**GANG /
TREPPE**
7.4 m²

BAD / WC
5.4 m²

2.72

.06

2.03

ZIMMER 1
12.1 m²

2.60

.27

.28

Rad.

Rad.

.28

Vordach

A

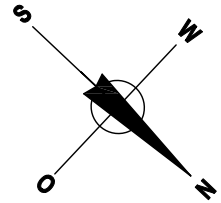
5 1/2 - ZIMMER - REFH
BALLMOOSWEG 6d
3033 WOHLLEN b. Bern

OBERGESCHOSS MST. 1:50

REPRO.: 27.04.2026 ns

RAUMPROGRAMM

- GANG / TREPPE	7.4 M2
- ZIMMER 1	12.1 M2
- BAD / WC	5.4 M2
- ZIMMER 2	19.2 M2
- TOTAL	44.1 M2
- BALKON	5.9 M2



A

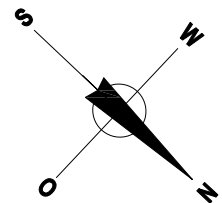
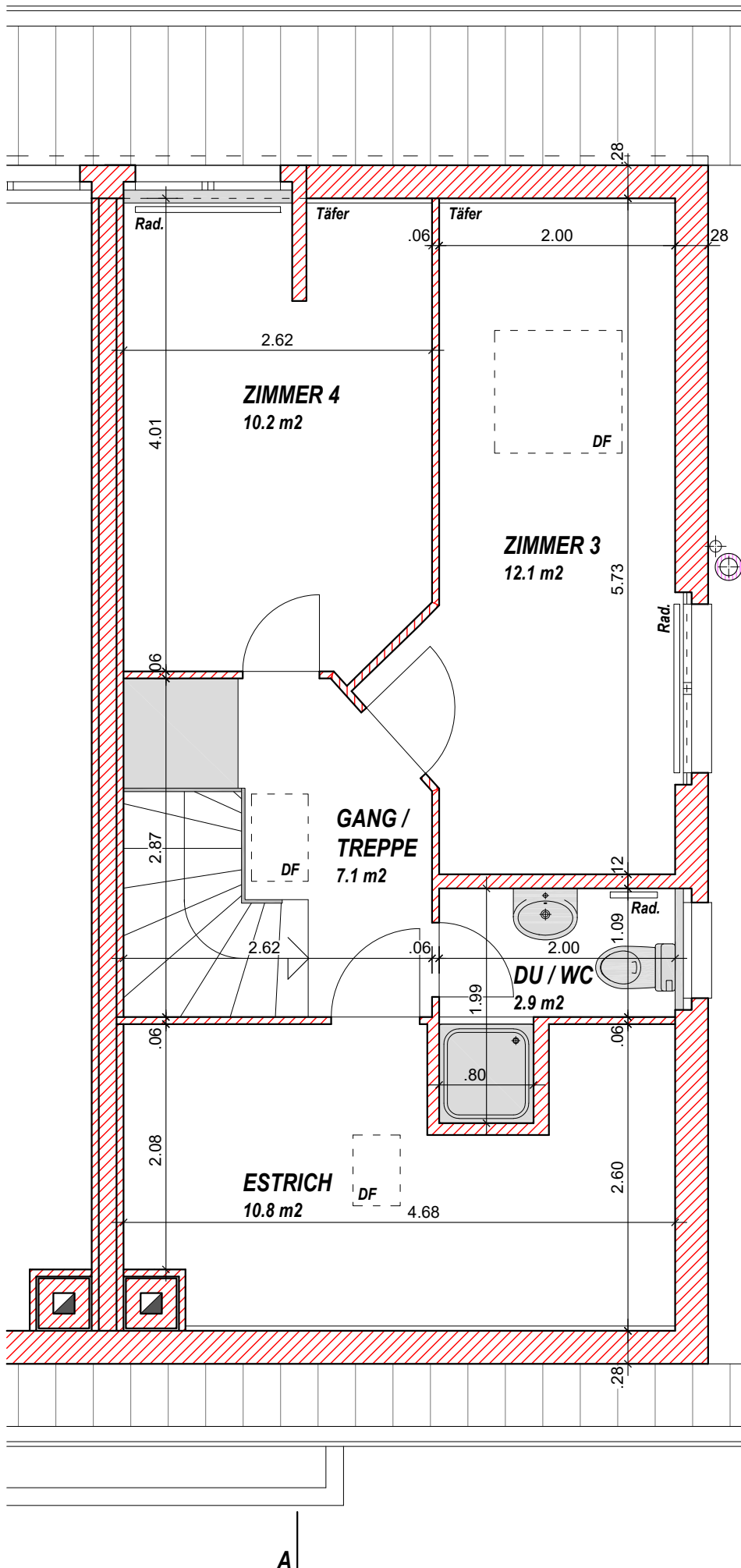
5 1/2 - ZIMMER - REFH
BALLMOOSWEG 6d
3033 WOHLLEN b. Bern

DACHGESCHOSS MST. 1:50

REPRO.: 27.04.2026 ns

RAUMPROGRAMM

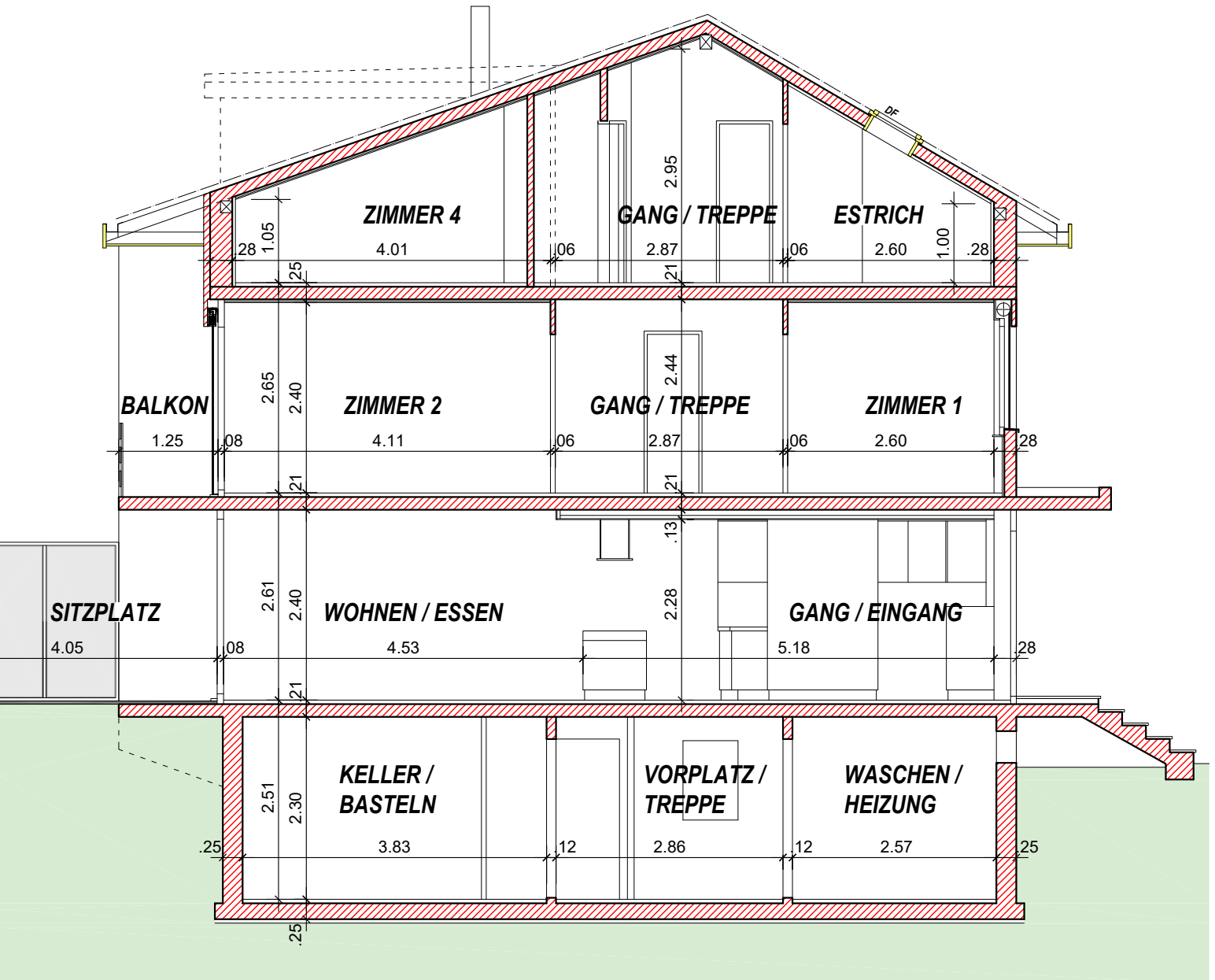
- GANG / TREPPE	7.1 M2
- DU / WC	2.9 M2
- ZIMMER 3	12.1 M2
- ZIMMER 4	10.2 M2
- TOTAL	32.3 M2
- ESTRICH	10.8 M2



A

5 1/2 - ZIMMER - REFH
BALLMOOSWEG 6d
3033 WOHLLEN b. Bern

SCHNITT A - A MST. 1:75
REPRO.: 27.04.2026 ns



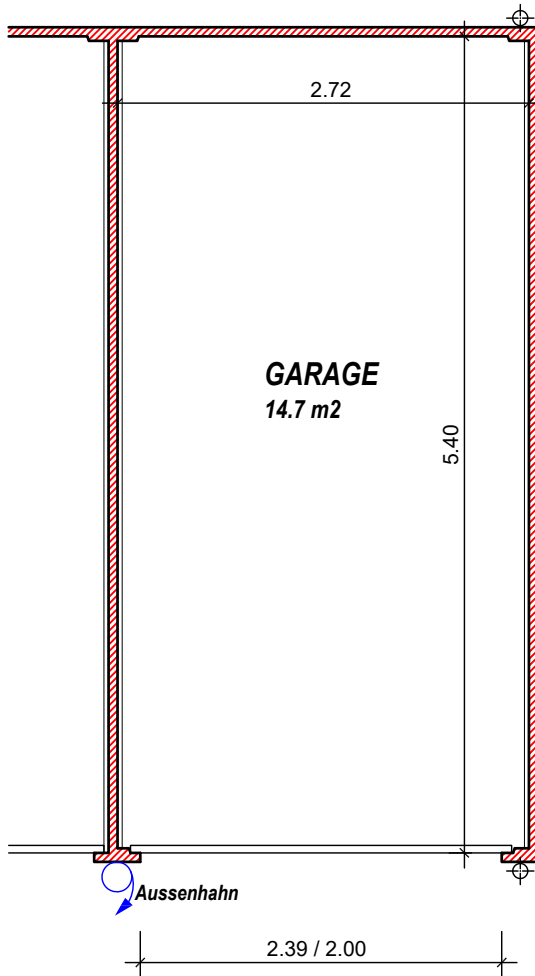
5 1/2 - ZIMMER - REFH
BALLMOOSWEG 6d
3033 WOHLLEN b. Bern

GARAGE MST. 1:50
REPRO.: 27.04.2026 ns

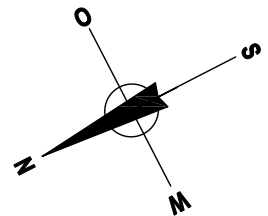
RAUMPROGRAMM

- GARAGE

14.7 M2




EINFAHRT




hu. marti immobilien