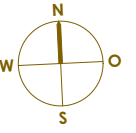
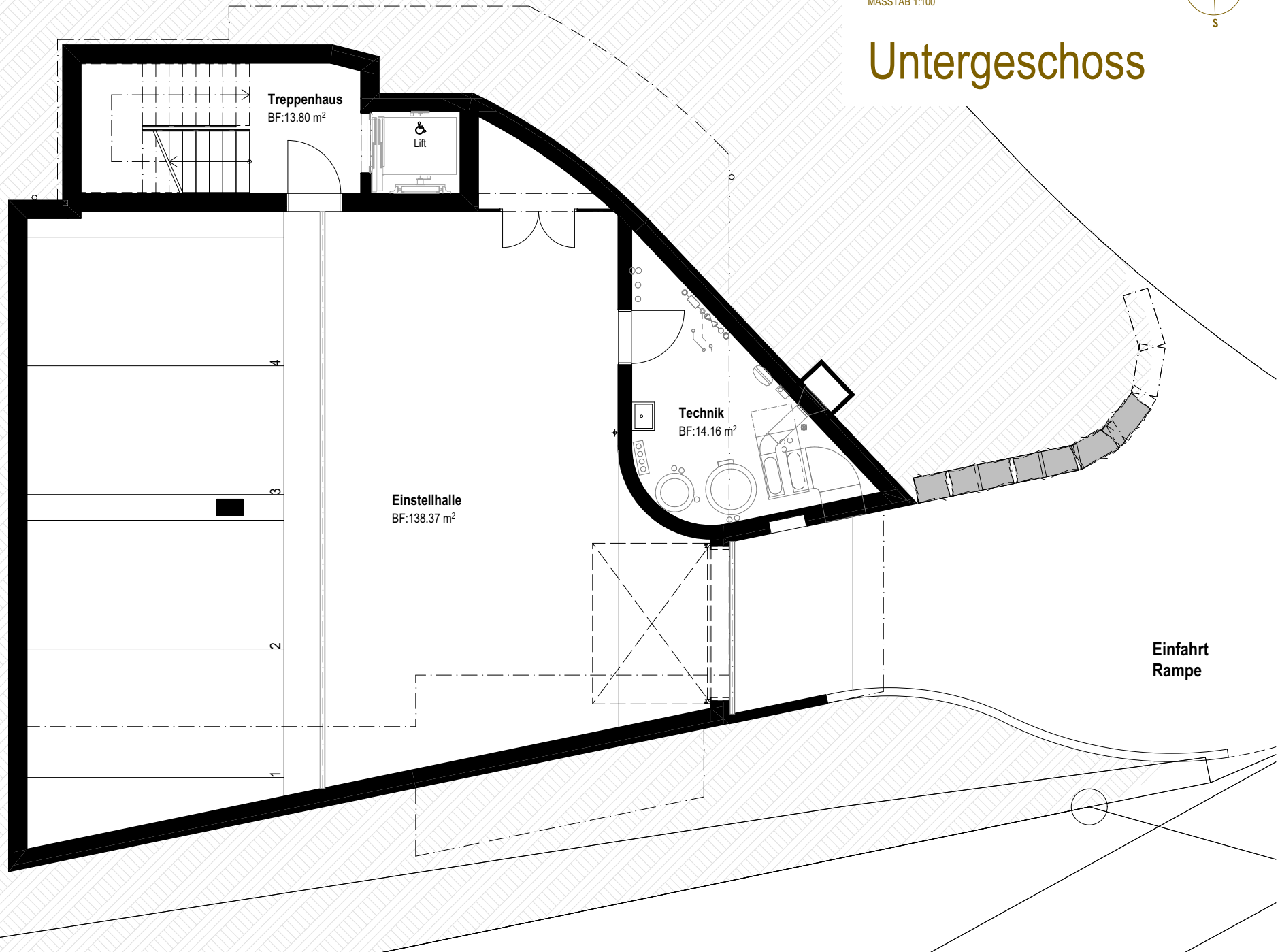


MFH Mettlenstrasse 10
6363 Fürigen





Untergeschoss



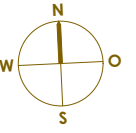
Treppenhaus
BF:13.80 m²

Lift

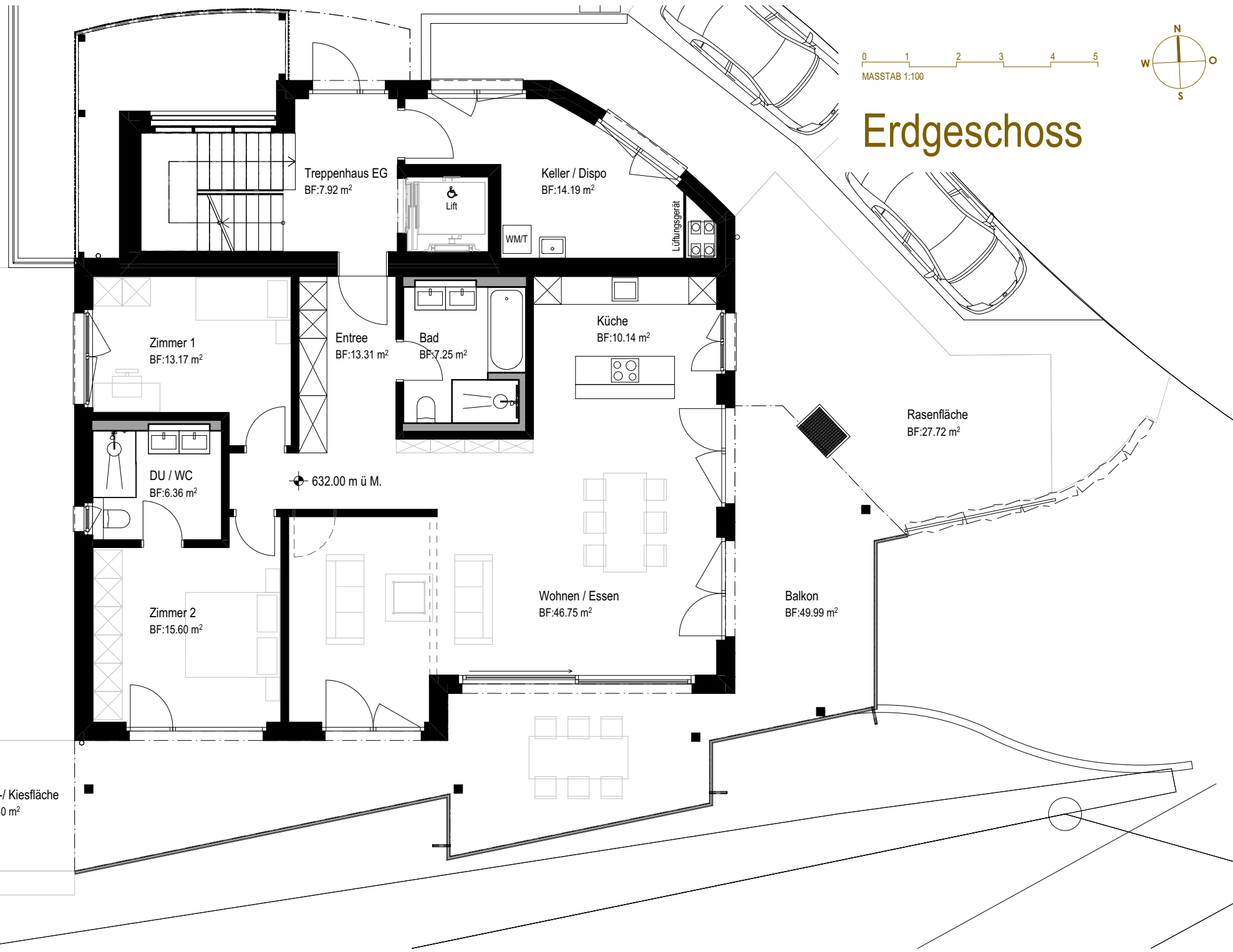
Technik
BF:14.16 m²

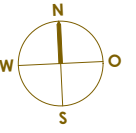
Einstellhalle
BF:138.37 m²

Einfahrt
Rampe

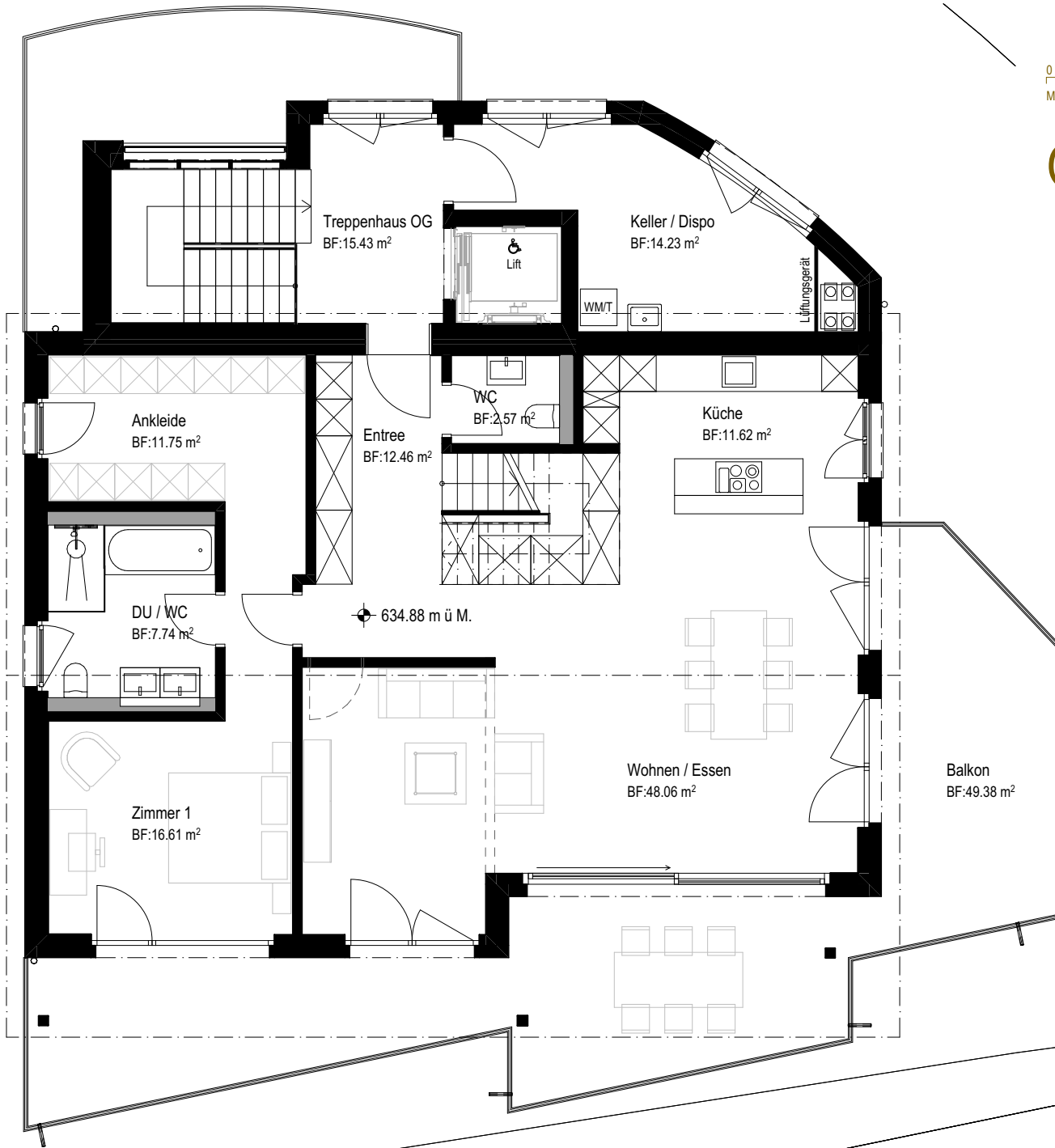


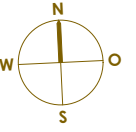
Erdgeschoss



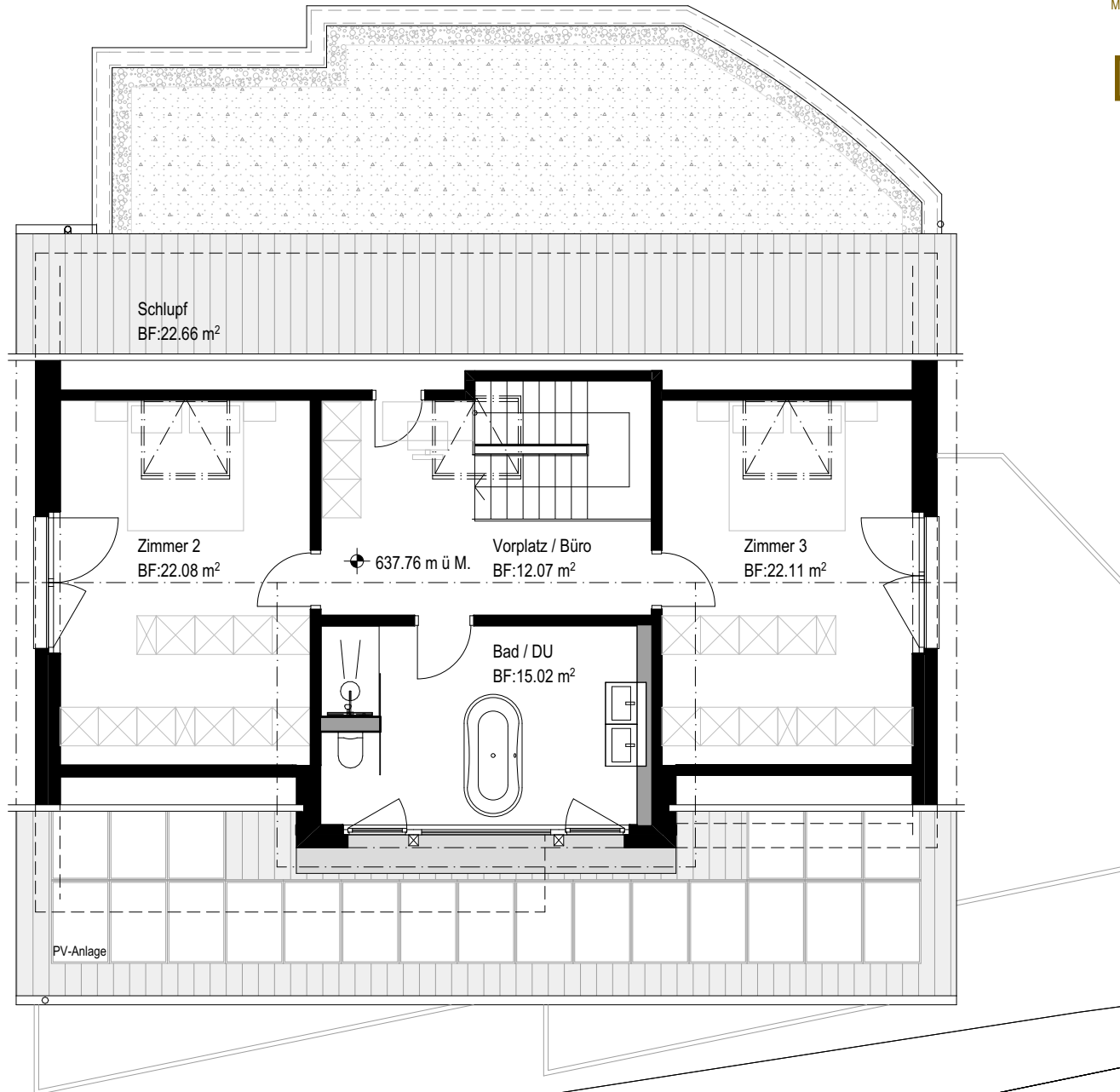


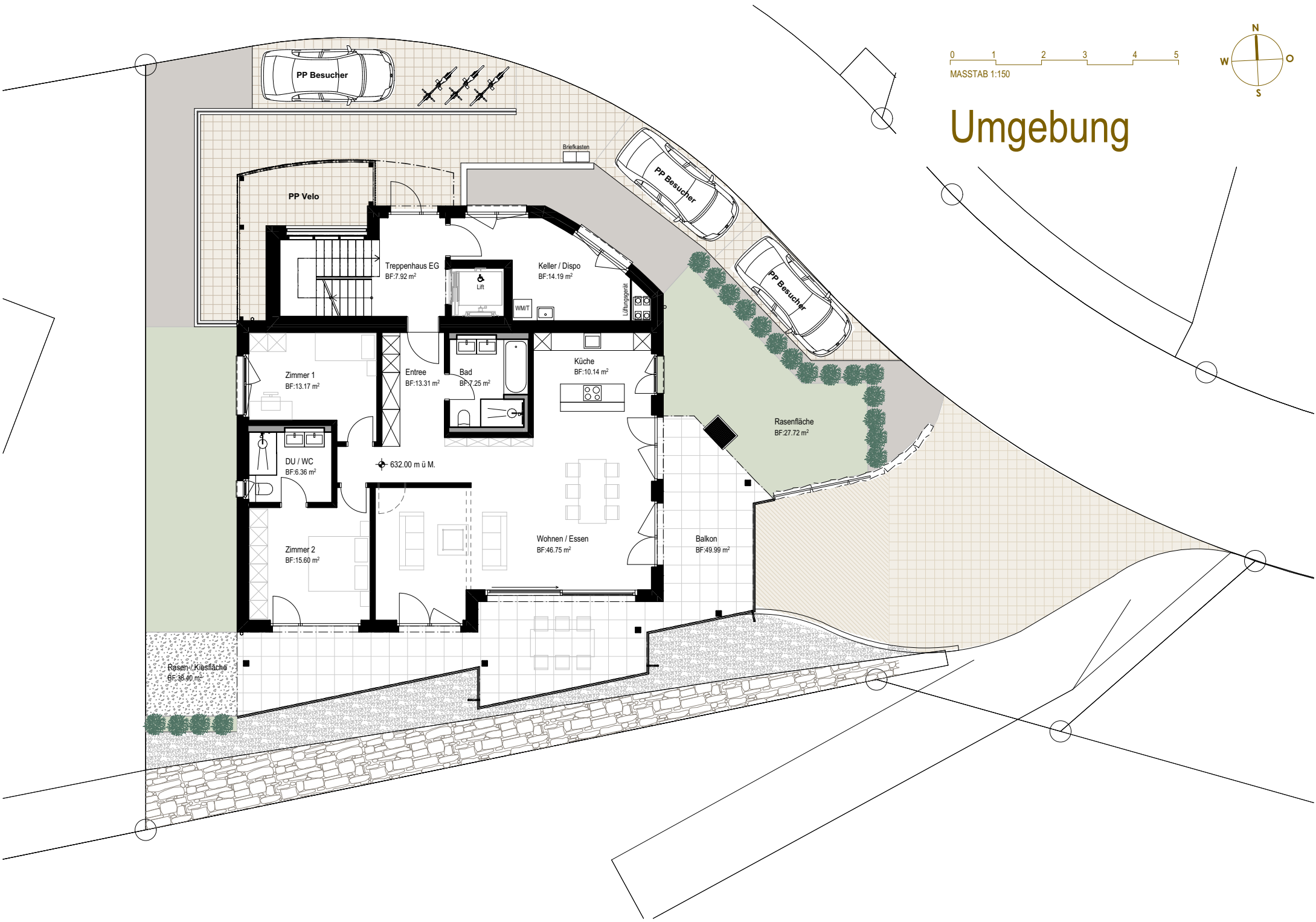
Obergeschoss





Dachgeschoss





0 1 2 3 4 5
MASSTAB 1:150



Umgebung

PP Besucher

PP Besucher

PP Besucher

PP Velo

Treppenhaus EG
BF:7.92 m²

Keller / Dispo
BF:14.19 m²

Lift

WMT

Lüftungsgitter

Zimmer 1
BF:13.17 m²

Entree
BF:13.31 m²

Bad
BF:7.25 m²

Küche
BF:10.14 m²

DU / WC
BF:6.36 m²

632.00 m ü M.

Wohnen / Essen
BF:46.75 m²

Balkon
BF:49.99 m²

Rasenfläche
BF:27.72 m²

Rasen-/Kiesfläche
BF:35.40 m²

0 1 2 3 4 5
MASSTAB 1:100

Schnitt



0 1 2 3 4 5
MASSTAB 1:100

Nordfassade



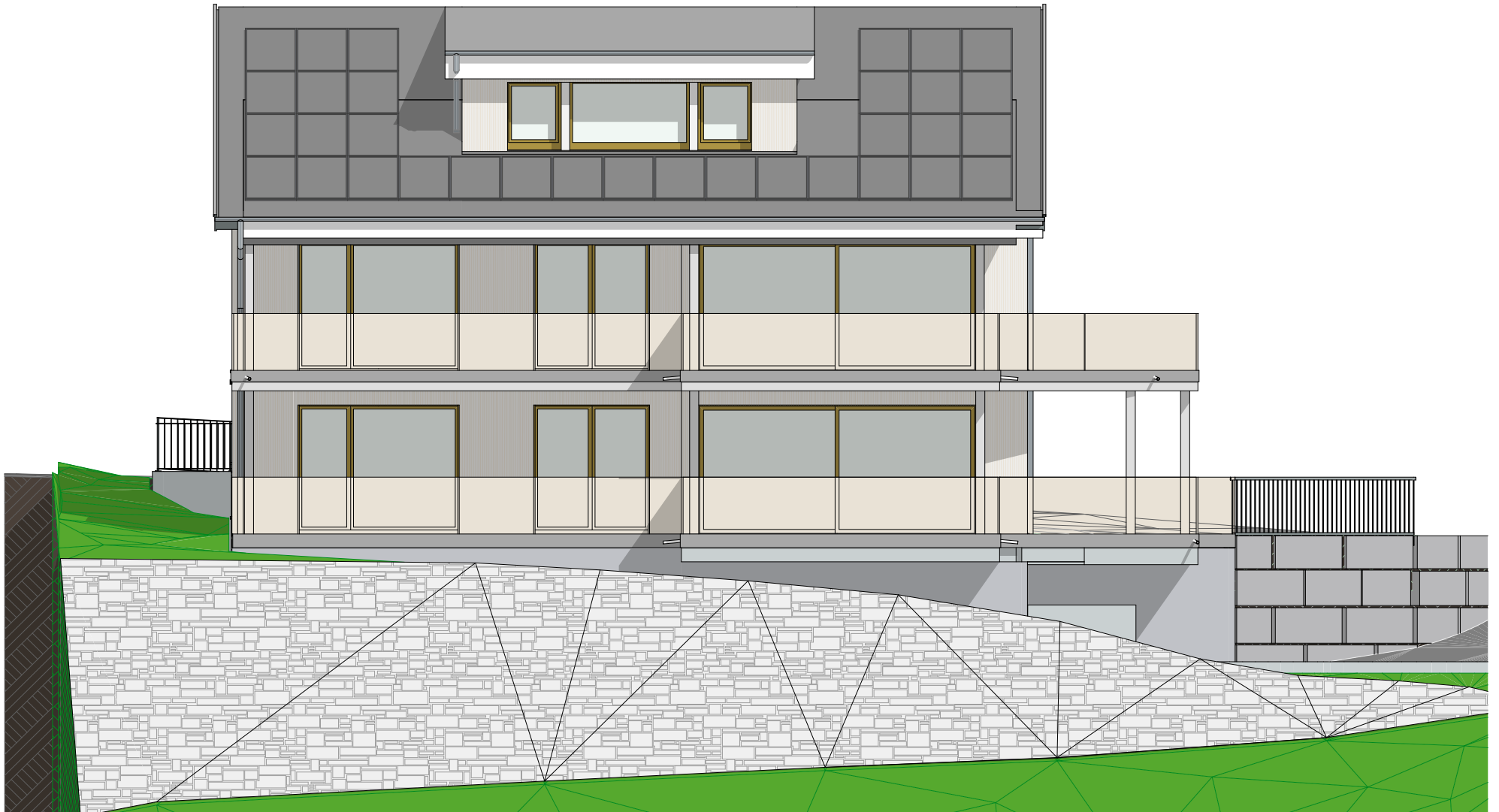
0 1 2 3 4 5
MASSTAB 1:100

Ostfassade



0 1 2 3 4 5
MASSTAB 1:100

Südfassade



0 1 2 3 4 5
MASSTAB 1:100

Westfassade

