



## mieterpläne

Belano Zuhause in Grenchen, Girardstrasse 1-7, 2540 Grenchen

BELANO®  
ZUHAUSE

13.05.2026

vbarchitekten.

# BELANO®

ZUHAUSE

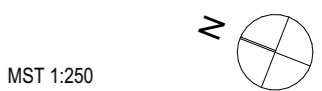
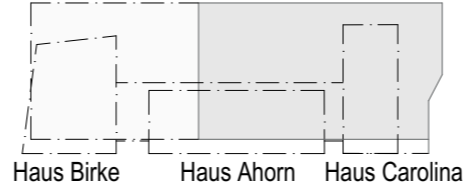
2540 Grenchen, Girardstrasse 1-7



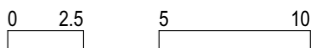
- Keller zu den Wohnungen
- Technikräume
- Räumlichkeiten von Belano
- Räumlichkeiten zum Mieten
- Räumlichkeiten zur allgemeinen Nutzung
- Gewerberaum

Vermietung:  
**Erard Immobilien**  
 Brühlstrasse 15  
 2540 Grenchen

-1.UG | Einstellhalle 1    -2.UG | Einstellhalle 2



MST 1:250



**v**architekten.

www.vba.ch

# BELANO®

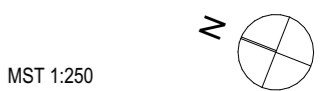
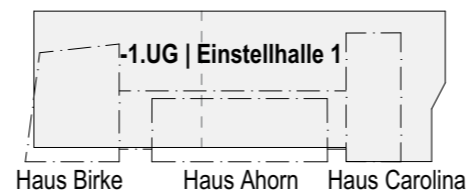
ZUHAUSE

2540 Grenchen, Girardstrasse 1-7

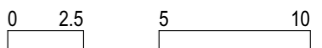


- Keller zu den Wohnungen
- Technikräume
- Räumlichkeiten von Belano
- Räumlichkeiten zum Mieten
- Räumlichkeiten zur allgemeinen Nutzung
- Gewerberaum

Vermietung:  
**Erard Immobilien**  
 Brühlstrasse 15  
 2540 Grenchen



MST 1:250



**v**architekten.

www.vba.ch

# BELANO®

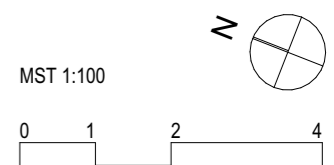
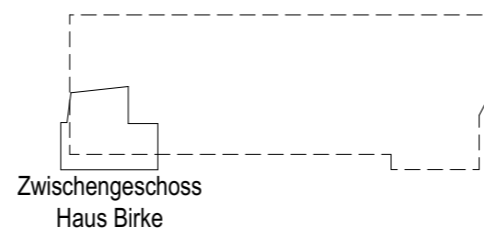
ZUHAUSE

2540 Grenchen, Girardstrasse 1-7



- Keller zu den Wohnungen
- Technikräume
- Räumlichkeiten von Belano
- Räumlichkeiten zum Mieten
- Räumlichkeiten zur allgemeinen Nutzung
- Gewerberaum

Vermietung:  
**Erard Immobilien**  
Brühlstrasse 15  
2540 Grenchen

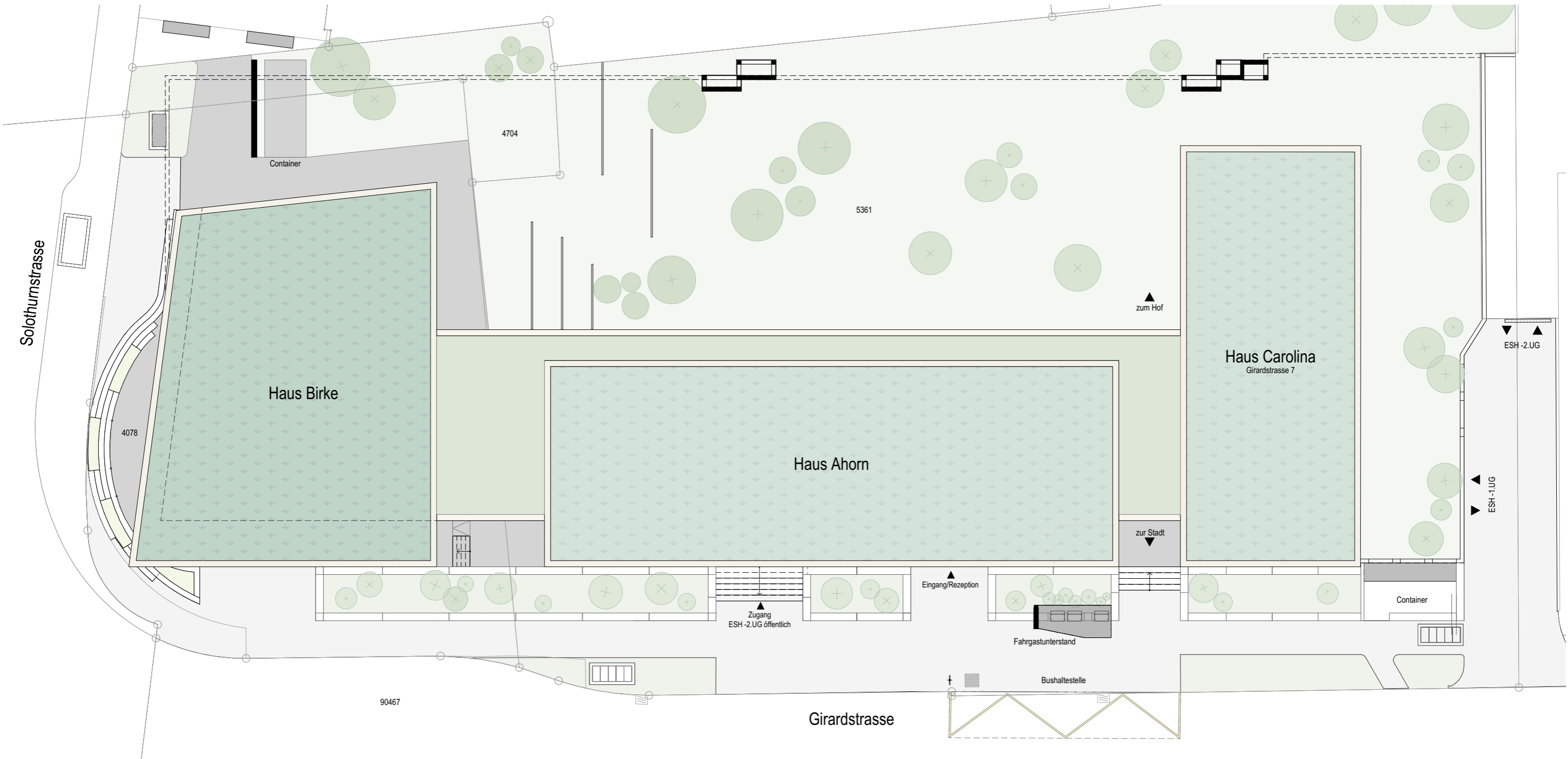




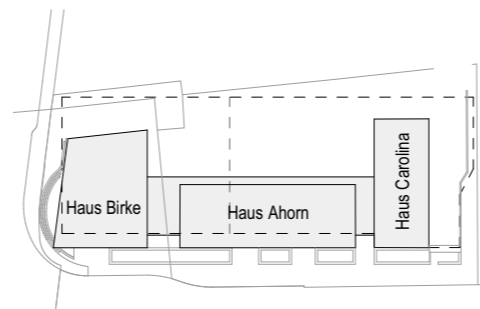
# BELANO®

ZUHAUSE

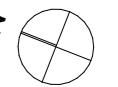
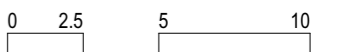
2540 Grenchen, Girardstrasse 1-7



Vermietung:  
**Erard Immobilien**  
Brühlstrasse 15  
2540 Grenchen



MST 1:250



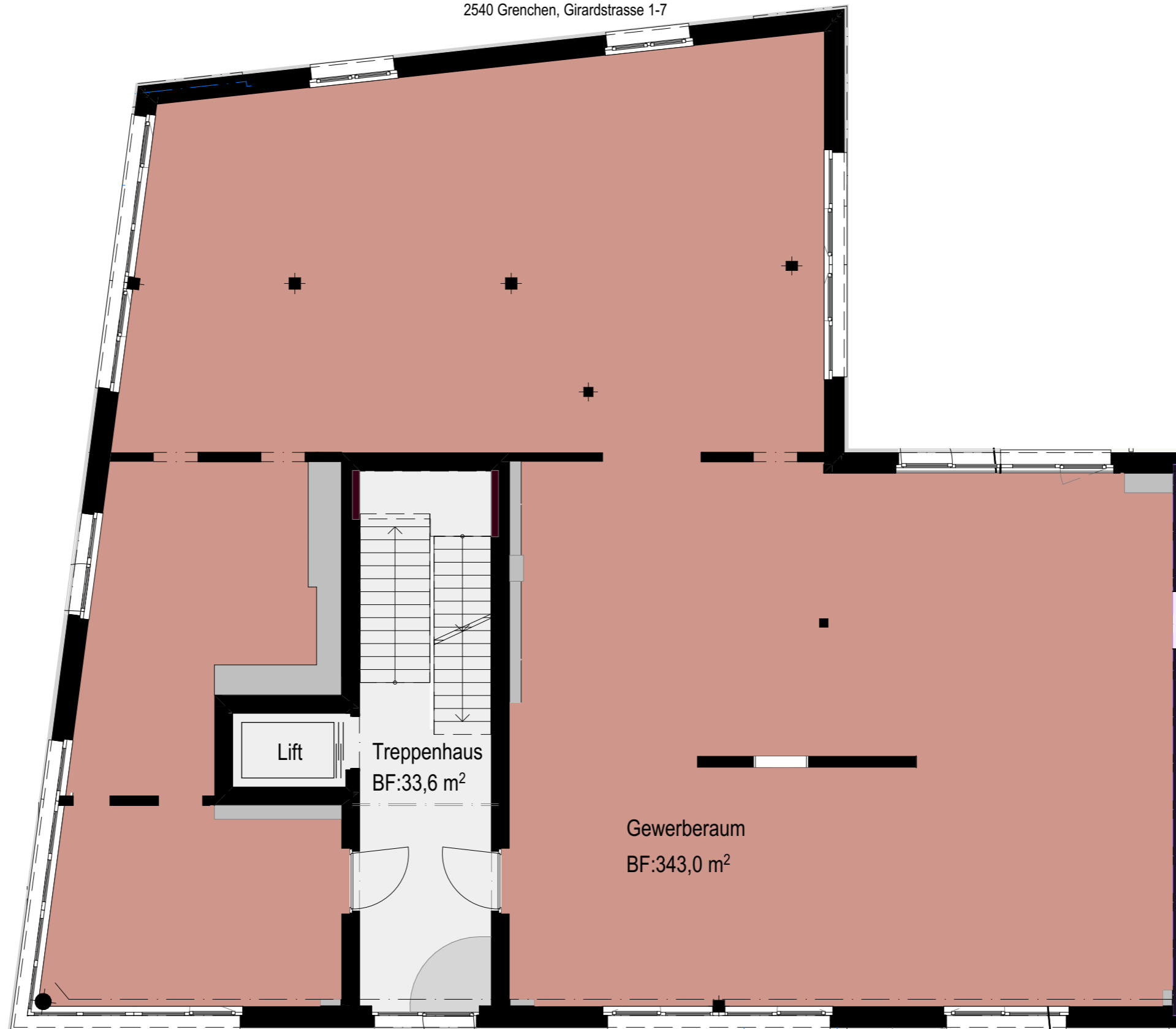
**v**architekten.

www.vba.ch

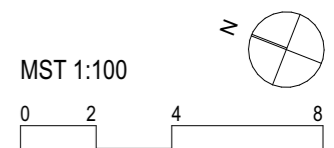
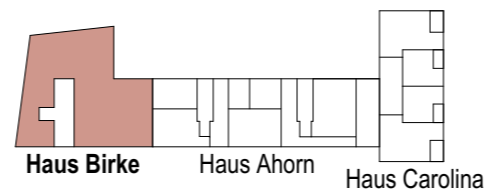
# BELANO®

ZUHAUSE

2540 Grenchen, Girardstrasse 1-7



Vermietung:  
**Erard Immobilien**  
Brühlstrasse 15  
2540 Grenchen



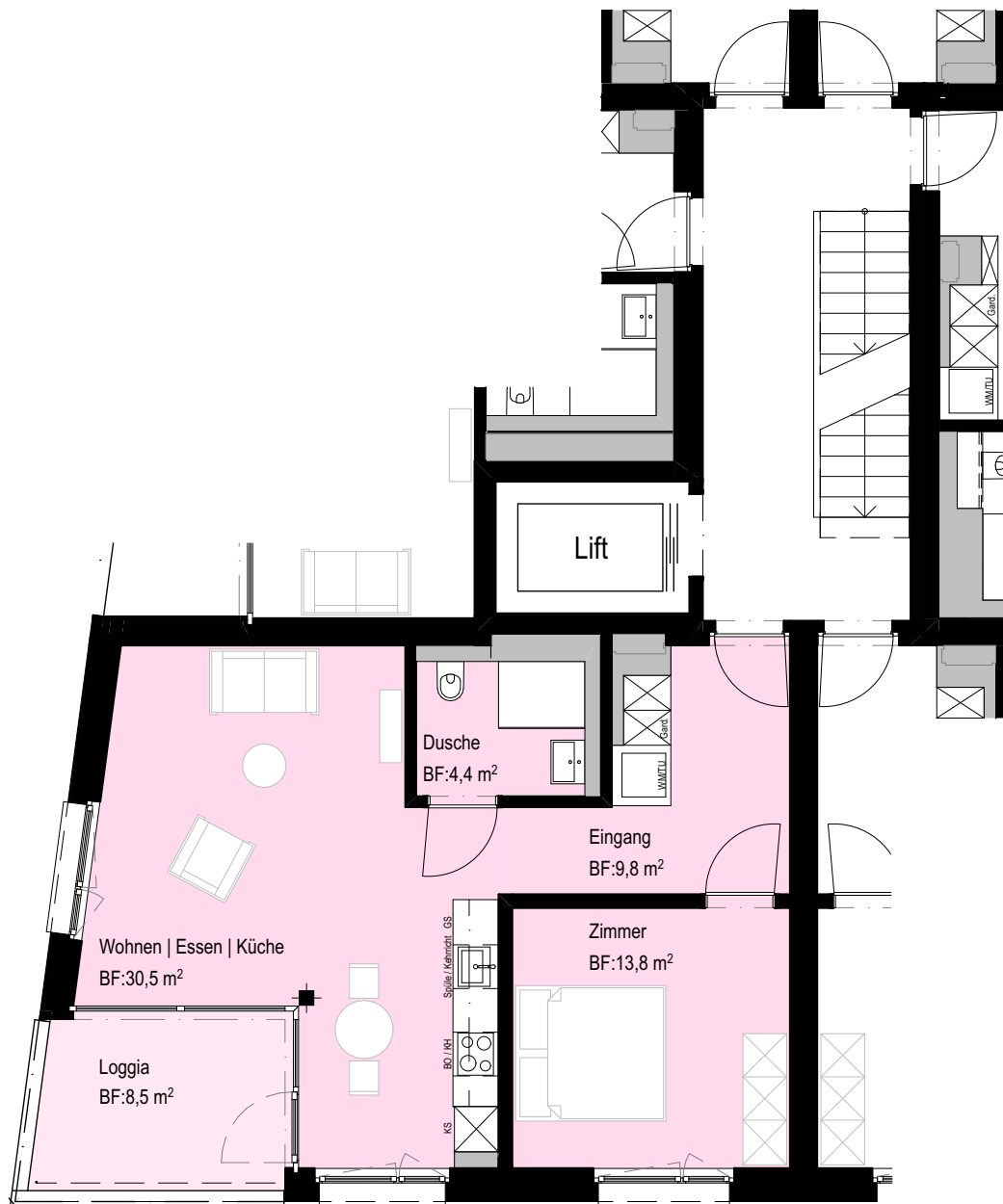
**vbarchitekten.**  
www.vba.ch

# BELANO®

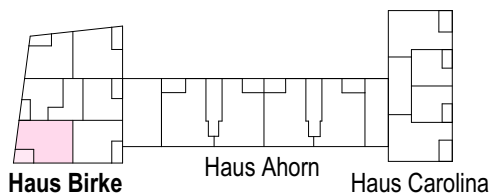
ZUHAUSE

2540 Grenchen, Girardstrasse 1-7

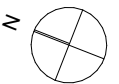
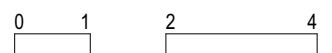
Whg. Nr.	Etage	Grösse	Wohnfläche	Balkon
B1.1	2.Vollgeschoss	2 1/2 Zimmer	58.50 m <sup>2</sup>	8.50 m <sup>2</sup>
B2.1	3.Vollgeschoss	2 1/2 Zimmer	58.50 m <sup>2</sup>	8.50 m <sup>2</sup>
B3.1	4.Vollgeschoss	2 1/2 Zimmer	58.50 m <sup>2</sup>	8.50 m <sup>2</sup>
B4.1	5.Vollgeschoss	2 1/2 Zimmer	58.50 m <sup>2</sup>	8.50 m <sup>2</sup>



Vermietung:  
**Erard Immobilien**  
Brühlstrasse 15  
2540 Grenchen



MST 1:100



**v**architekten.

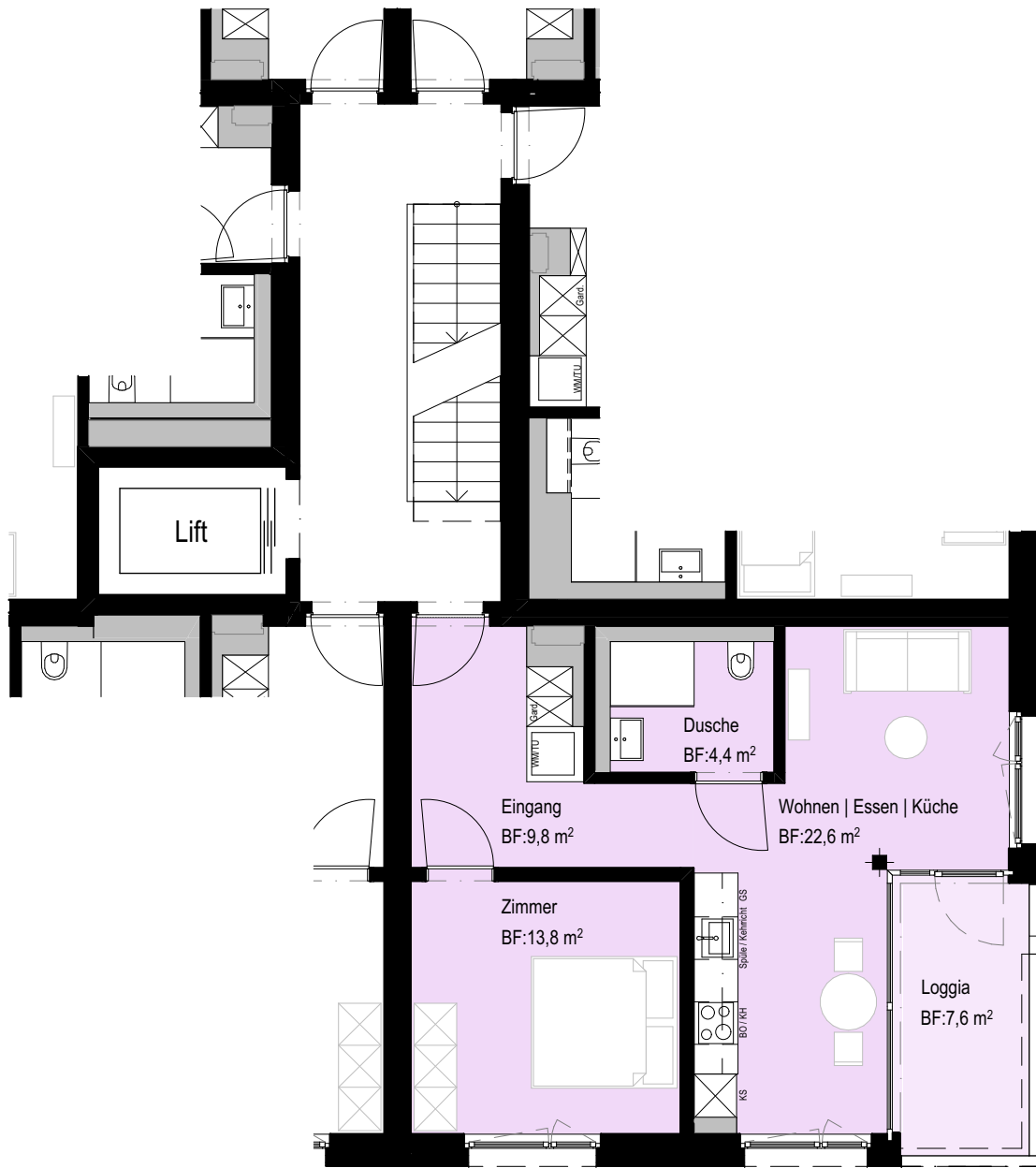
[www.vba.ch](http://www.vba.ch)

# BELANO®

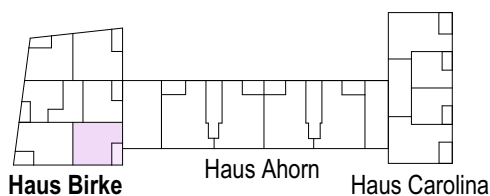
ZUHAUSE

2540 Grenchen, Girardstrasse 1-7

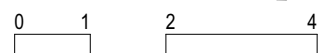
Whg. Nr.	Etage	Grösse	Wohnfläche	Balkon
B1.2	2.Vollgeschoss	2 1/2 Zimmer	50.60 m <sup>2</sup>	7.60 m <sup>2</sup>
B2.2	3.Vollgeschoss	2 1/2 Zimmer	50.60 m <sup>2</sup>	7.60 m <sup>2</sup>
B3.2	4.Vollgeschoss	2 1/2 Zimmer	50.60 m <sup>2</sup>	7.60 m <sup>2</sup>
B4.2	5.Vollgeschoss	2 1/2 Zimmer	50.60 m <sup>2</sup>	7.60 m <sup>2</sup>



Vermietung:  
**Erard Immobilien**  
 Brühlstrasse 15  
 2540 Grenchen



MST 1:100



**vbarchitekten.**

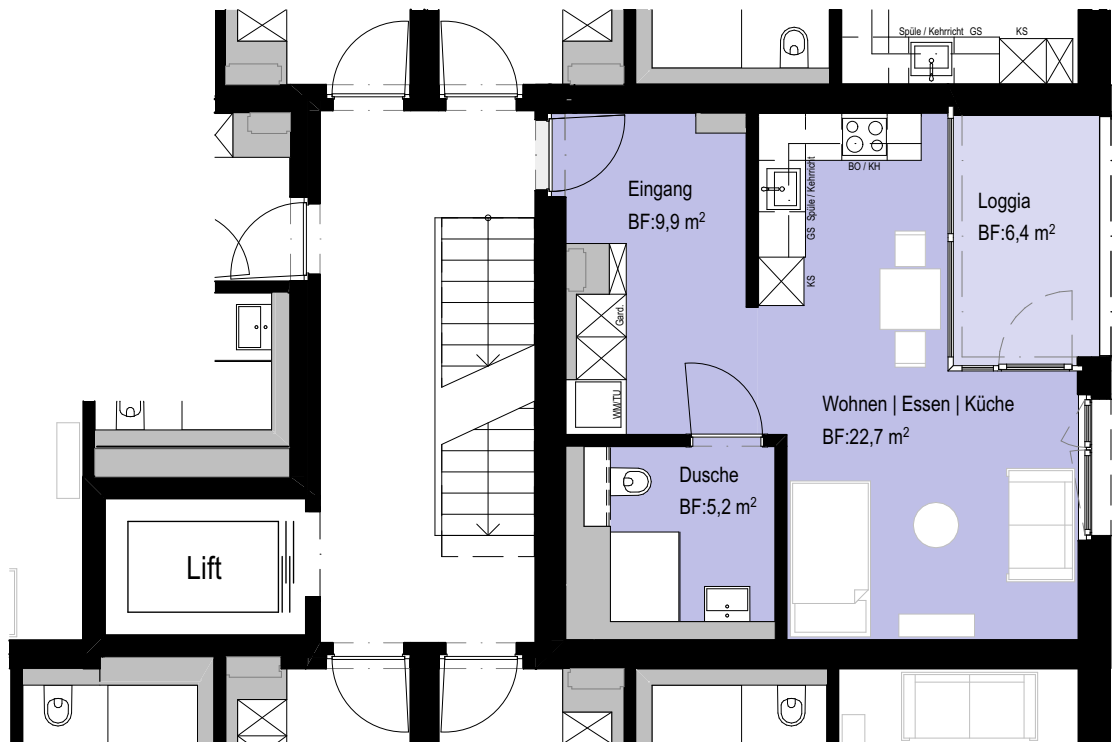
www.vba.ch

# BELANO®

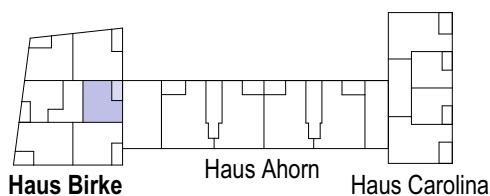
ZUHAUSE

2540 Grenchen, Girardstrasse 1-7

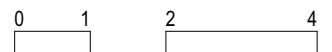
Whg. Nr.	Etage	Grösse	Wohnfläche	Balkon
B1.3	2.Vollgeschoss	1 1/2 Zimmer	37.80 m <sup>2</sup>	6.40 m <sup>2</sup>
B2.3	3.Vollgeschoss	1 1/2 Zimmer	37.80 m <sup>2</sup>	6.40 m <sup>2</sup>
B3.3	4.Vollgeschoss	1 1/2 Zimmer	37.80 m <sup>2</sup>	6.40 m <sup>2</sup>
B4.3	5.Vollgeschoss	1 1/2 Zimmer	37.80 m <sup>2</sup>	6.40 m <sup>2</sup>



Vermietung:  
**Erard Immobilien**  
Brühlstrasse 15  
2540 Grenchen



MST 1:100



**vbarchitekten.**

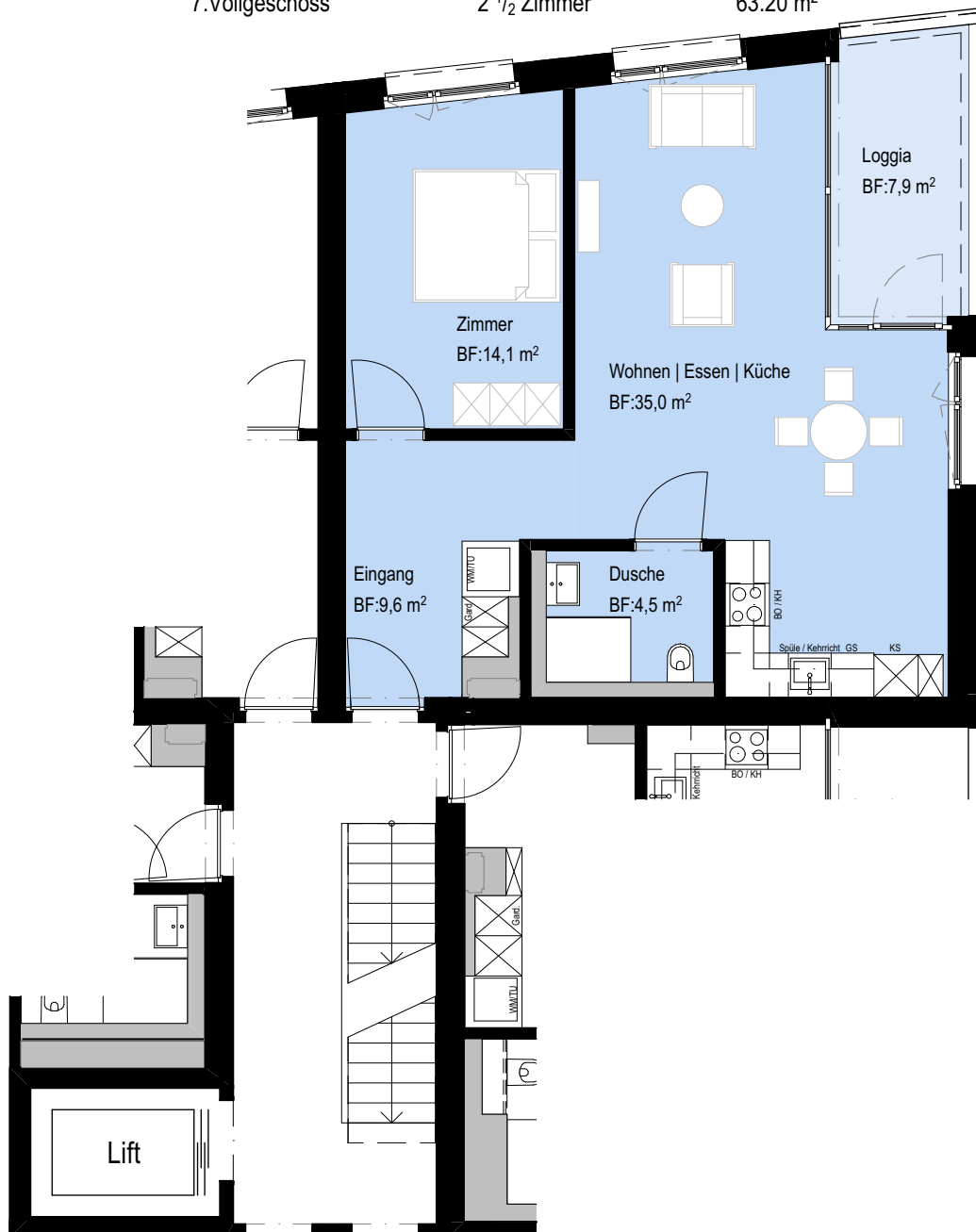
[www.vba.ch](http://www.vba.ch)

# BELANO®

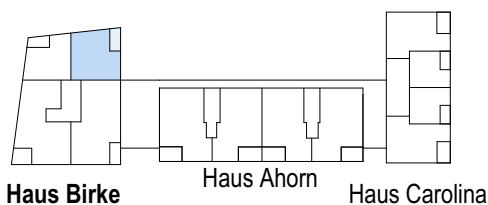
ZUHAUSE

2540 Grenchen, Girardstrasse 1-7

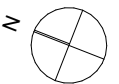
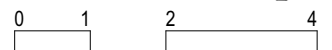
Whg. Nr.	Etage	Grösse	Wohnfläche	Balkon
B1.4	2.Vollgeschoss	2 1/2 Zimmer	63.20 m <sup>2</sup>	7.90 m <sup>2</sup>
B2.4	3.Vollgeschoss	2 1/2 Zimmer	63.20 m <sup>2</sup>	7.90 m <sup>2</sup>
B3.4	4.Vollgeschoss	2 1/2 Zimmer	63.20 m <sup>2</sup>	7.90 m <sup>2</sup>
B4.4	5.Vollgeschoss	2 1/2 Zimmer	63.20 m <sup>2</sup>	7.90 m <sup>2</sup>
B5.3	6.Vollgeschoss	2 1/2 Zimmer	63.20 m <sup>2</sup>	7.90 m <sup>2</sup>
B6.3	7.Vollgeschoss	2 1/2 Zimmer	63.20 m <sup>2</sup>	7.90 m <sup>2</sup>



Vermietung:  
**Erard Immobilien**  
 Brühlstrasse 15  
 2540 Grenchen



MST 1:100



**v**architekten.

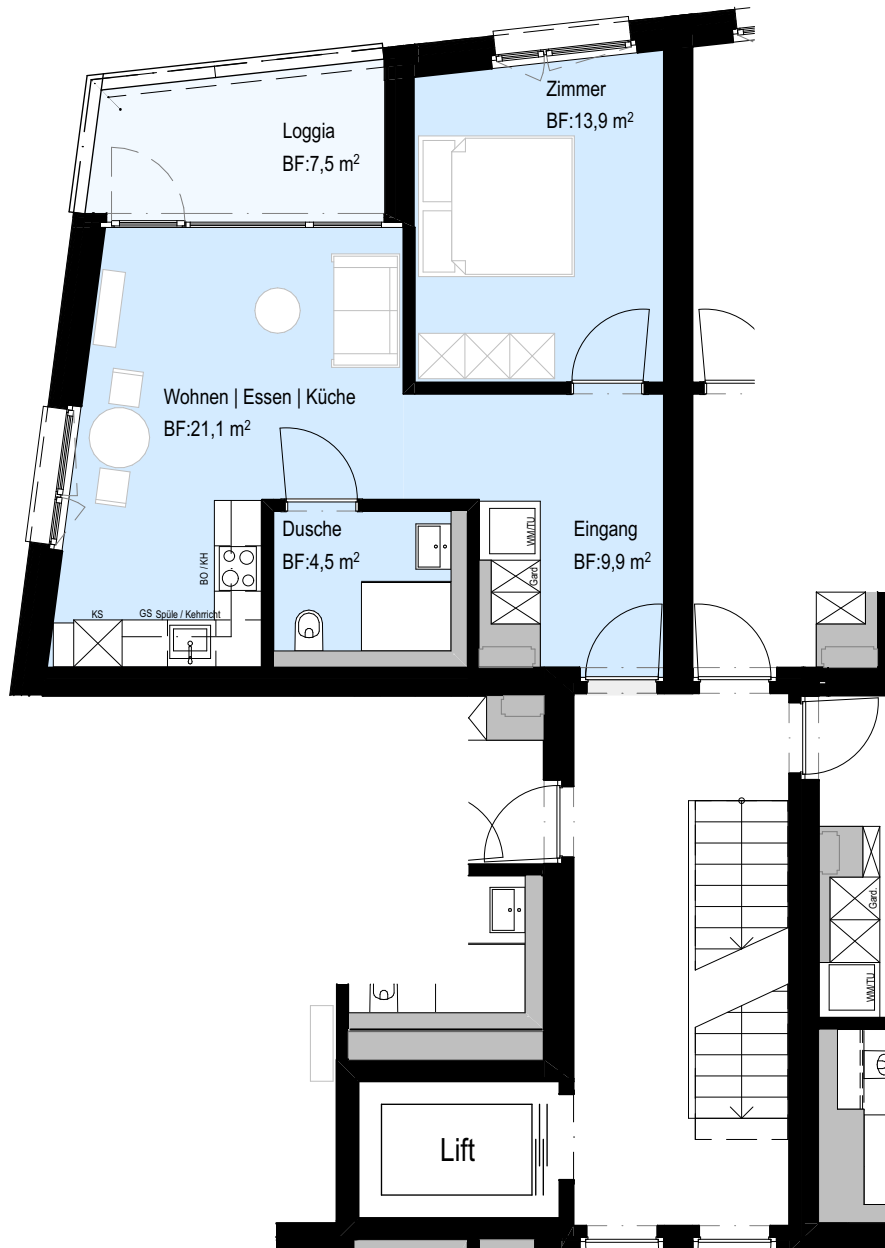
www.vba.ch

# BELANO®

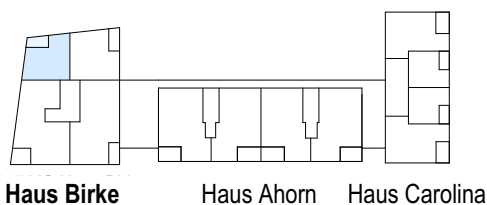
ZUHAUSE

2540 Grenchen, Girardstrasse 1-7

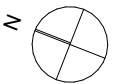
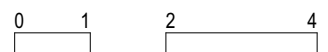
Whg. Nr.	Etage	Grösse	Wohnfläche	Balkon
B1.5	2.Vollgeschoss	2 1/2 Zimmer	49.40 m <sup>2</sup>	7.50 m <sup>2</sup>
B2.5	3.Vollgeschoss	2 1/2 Zimmer	49.40 m <sup>2</sup>	7.50 m <sup>2</sup>
B3.5	4.Vollgeschoss	2 1/2 Zimmer	49.40 m <sup>2</sup>	7.50 m <sup>2</sup>
B4.5	5.Vollgeschoss	2 1/2 Zimmer	49.40 m <sup>2</sup>	7.50 m <sup>2</sup>
B5.4	6.Vollgeschoss	2 1/2 Zimmer	49.40 m <sup>2</sup>	7.50 m <sup>2</sup>
B6.4	7.Vollgeschoss	2 1/2 Zimmer	49.40 m <sup>2</sup>	7.50 m <sup>2</sup>



Vermietung:  
**Erard Immobilien**  
Brühlstrasse 15  
2540 Grenchen



MST 1:100



**v**architekten.

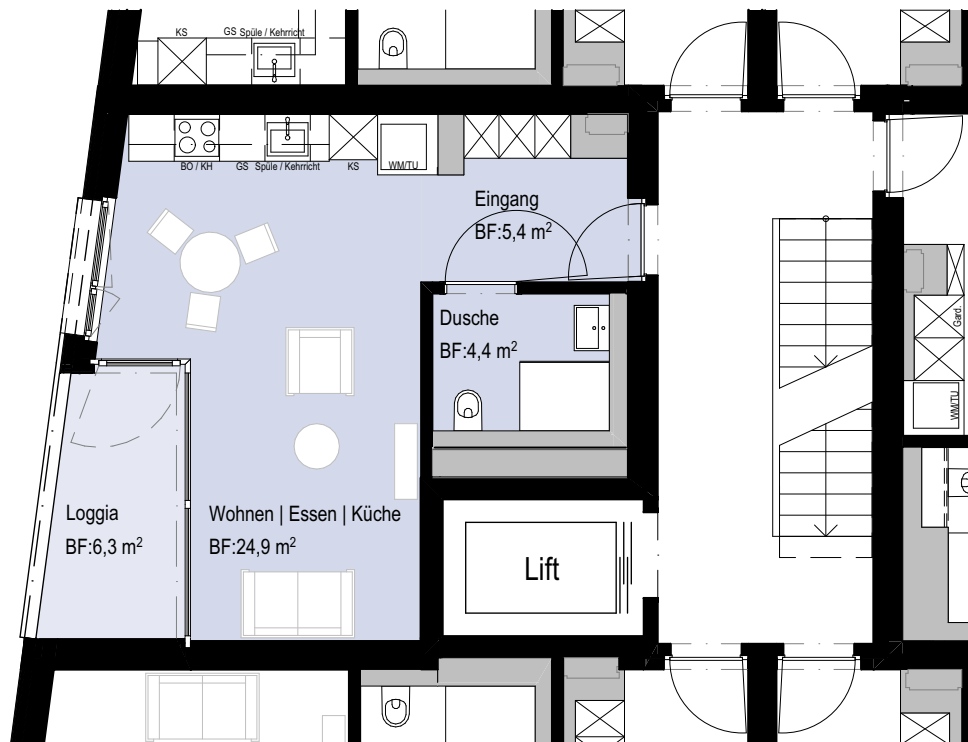
www.vba.ch

# BELANO®

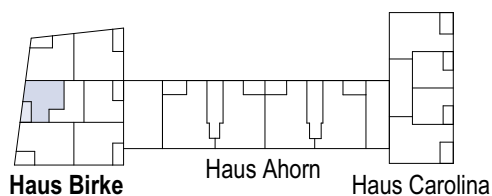
ZUHAUSE

2540 Grenchen, Girardstrasse 1-7

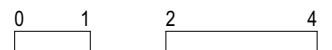
Whg. Nr.	Etage	Grösse	Wohnfläche	Balkon
B1.6	2.Vollgeschoss	1 1/2 Zimmer	34.70 m <sup>2</sup>	6.30 m <sup>2</sup>
B2.6	3.Vollgeschoss	1 1/2 Zimmer	34.70 m <sup>2</sup>	6.30 m <sup>2</sup>
B3.6	4.Vollgeschoss	1 1/2 Zimmer	34.70 m <sup>2</sup>	6.30 m <sup>2</sup>
B4.6	5.Vollgeschoss	1 1/2 Zimmer	34.70 m <sup>2</sup>	6.30 m <sup>2</sup>



Vermietung:  
**Erard Immobilien**  
Brühlstrasse 15  
2540 Grenchen



MST 1:100



**v**architekten.

www.vba.ch

# BELANO®

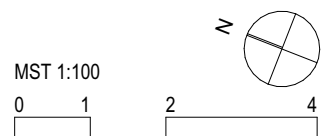
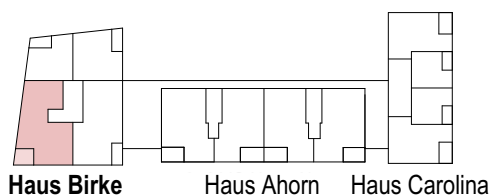
ZUHAUSE

2540 Grenchen, Girardstrasse 1-7

Whg. Nr.	Etage	Grösse	Wohnfläche	Balkon
B5.1	6.Vollgeschoss	4 1/2 Zimmer	99.80 m <sup>2</sup>	10.00 m <sup>2</sup>
B6.1	7.Vollgeschoss	4 1/2 Zimmer	99.80 m <sup>2</sup>	10.00 m <sup>2</sup>



Vermietung:  
**Erard Immobilien**  
 Brühlstrasse 15  
 2540 Grenchen



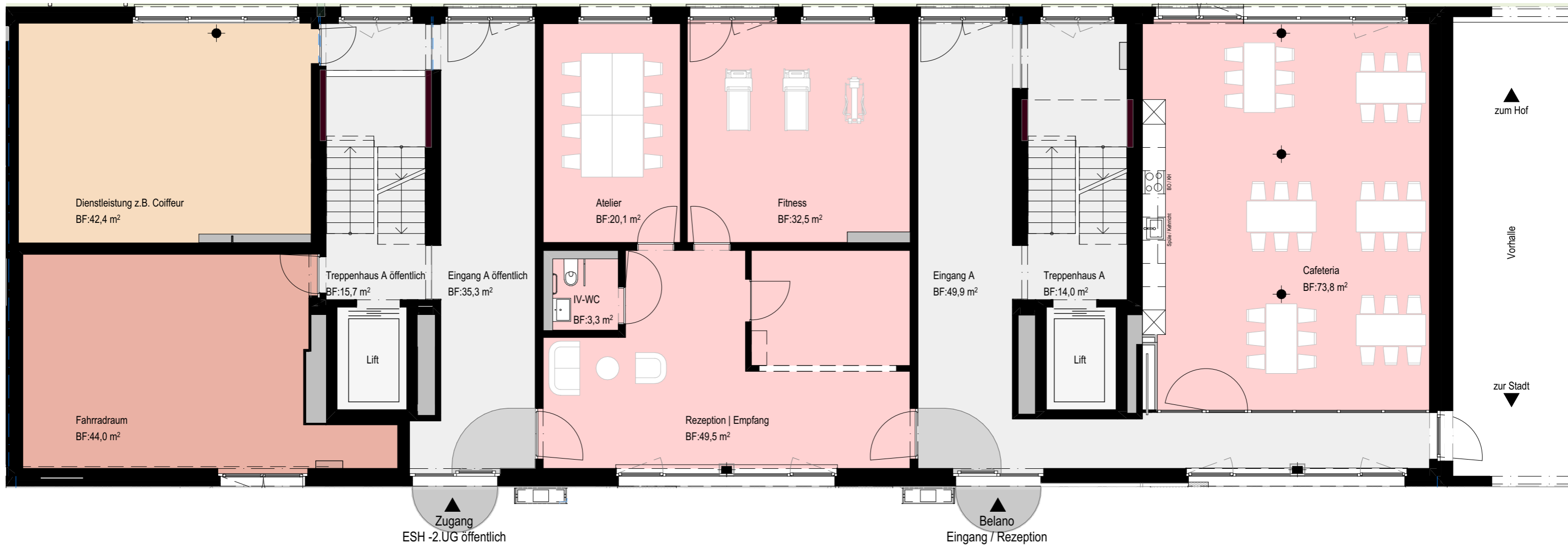
**v**architekten.  
 www.vba.ch



# BELANO®

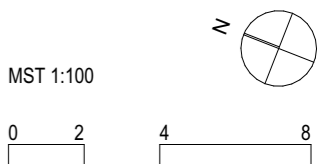
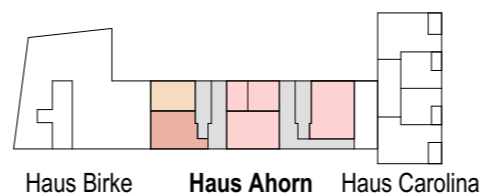
ZUHAUSE

2540 Grenchen, Girardstrasse 1-7



- Keller zu den Wohnungen
- Technikräume
- Räumlichkeiten von Belano
- Räumlichkeiten zum Mieten
- Räumlichkeiten zur allgemeinen Nutzung
- Gewerberaum

Vermietung:  
**Erard Immobilien**  
Brühlstrasse 15  
2540 Grenchen



# BELANO®

ZUHAUSE

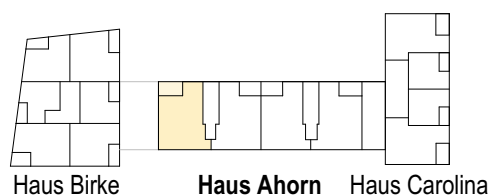
2540 Grenchen, Girardstrasse 1-7

Whg. Nr.	Etage	Grösse	Wohnfläche	Balkon
A1.1	2.Vollgeschoss	3 1/2 Zimmer	74.50 m <sup>2</sup>	8.70 m <sup>2</sup>

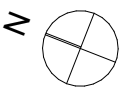
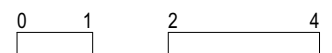
Diese Wohnung wird von der Kita genutzt



Vermietung:  
**Erard Immobilien**  
Brühlstrasse 15  
2540 Grenchen



MST 1:100



**v**barchitekten.

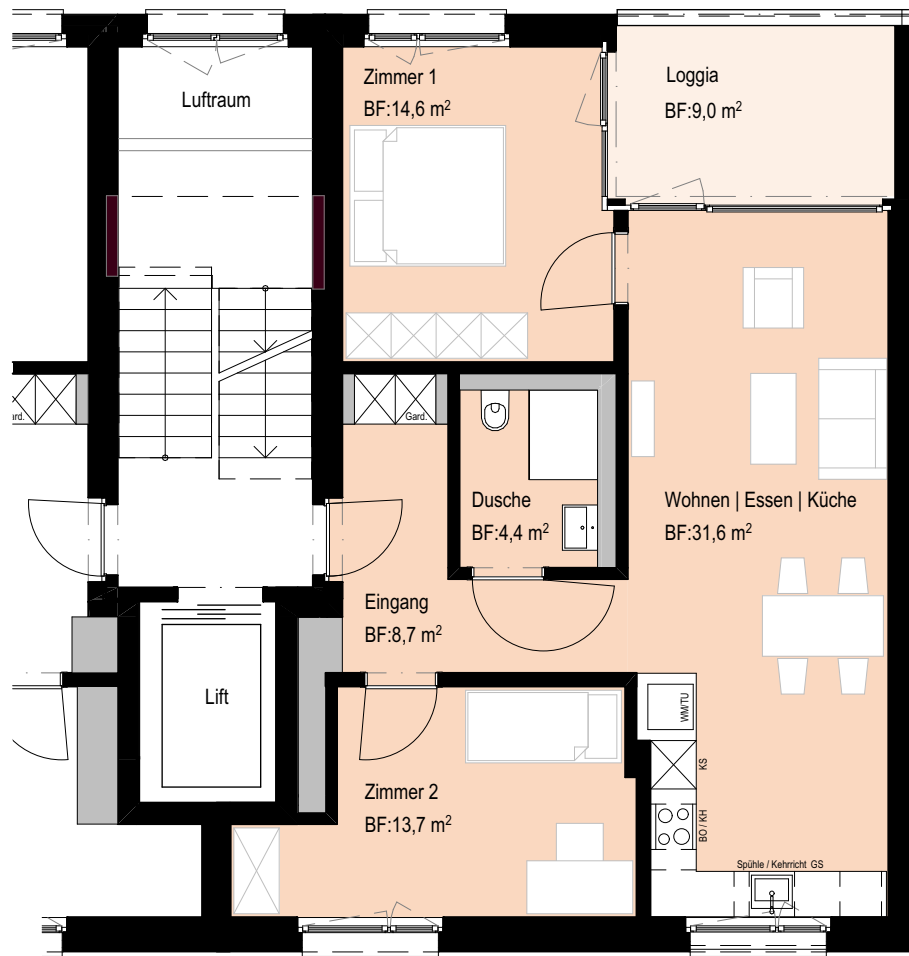
www.vba.ch

# BELANO®

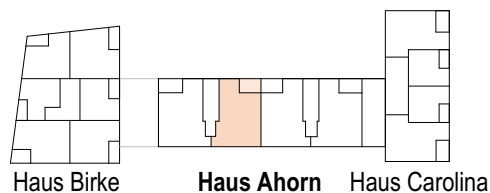
ZUHAUSE

2540 Grenchen, Girardstrasse 1-7

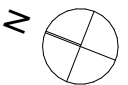
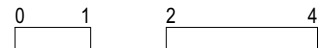
Whg. Nr.	Etage	Grösse	Wohnfläche	Balkon
A1.2	2.Vollgeschoss	3 1/2 Zimmer	73.00 m <sup>2</sup>	9.00 m <sup>2</sup>



Vermietung:  
**Erard Immobilien**  
Brühlstrasse 15  
2540 Grenchen



MST 1:100



**v**barchitekten.

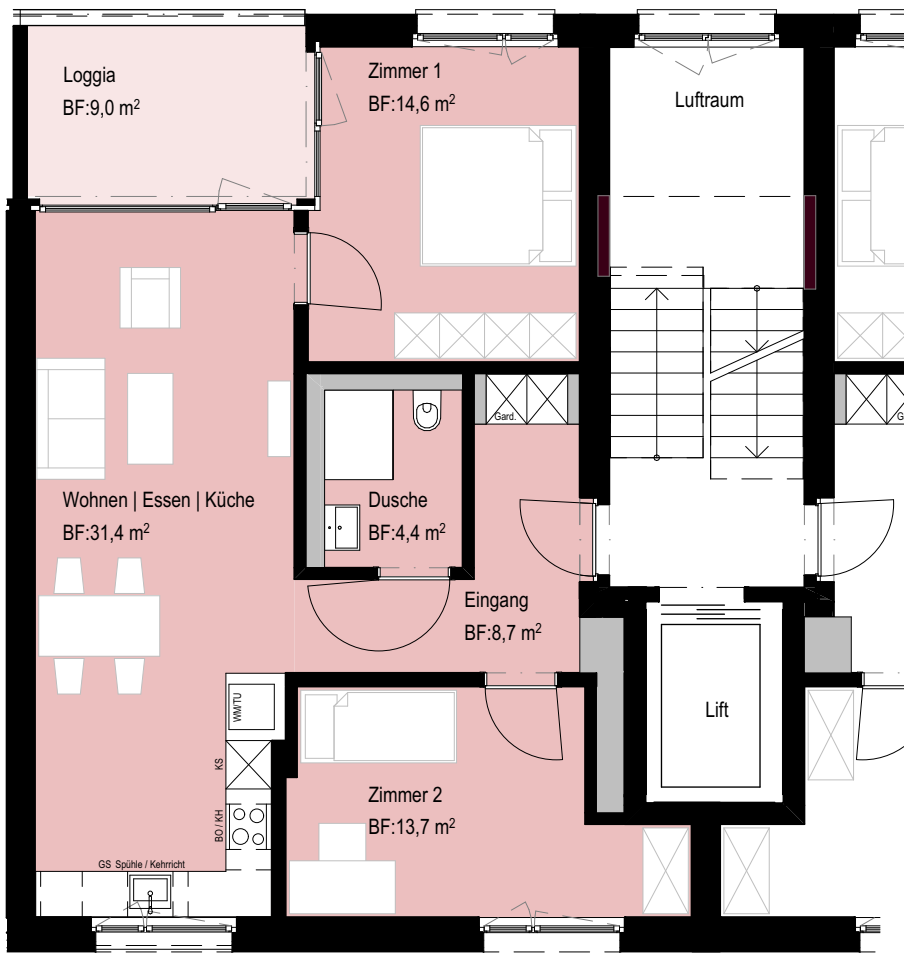
www.vba.ch

# BELANO®

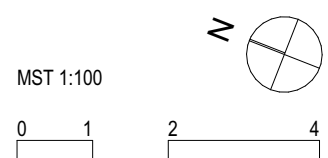
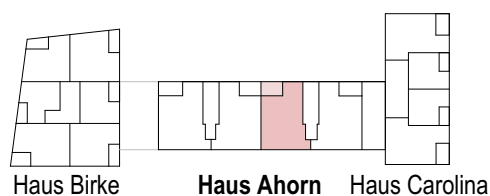
ZUHAUSE

2540 Grenchen, Girardstrasse 1-7

Whg. Nr.	Etage	Grösse	Wohnfläche	Balkon
A1.3	2.Vollgeschoss	3 1/2 Zimmer	72.80 m <sup>2</sup>	9.00 m <sup>2</sup>



Vermietung:  
**Erard Immobilien**  
Brühlstrasse 15  
2540 Grenchen



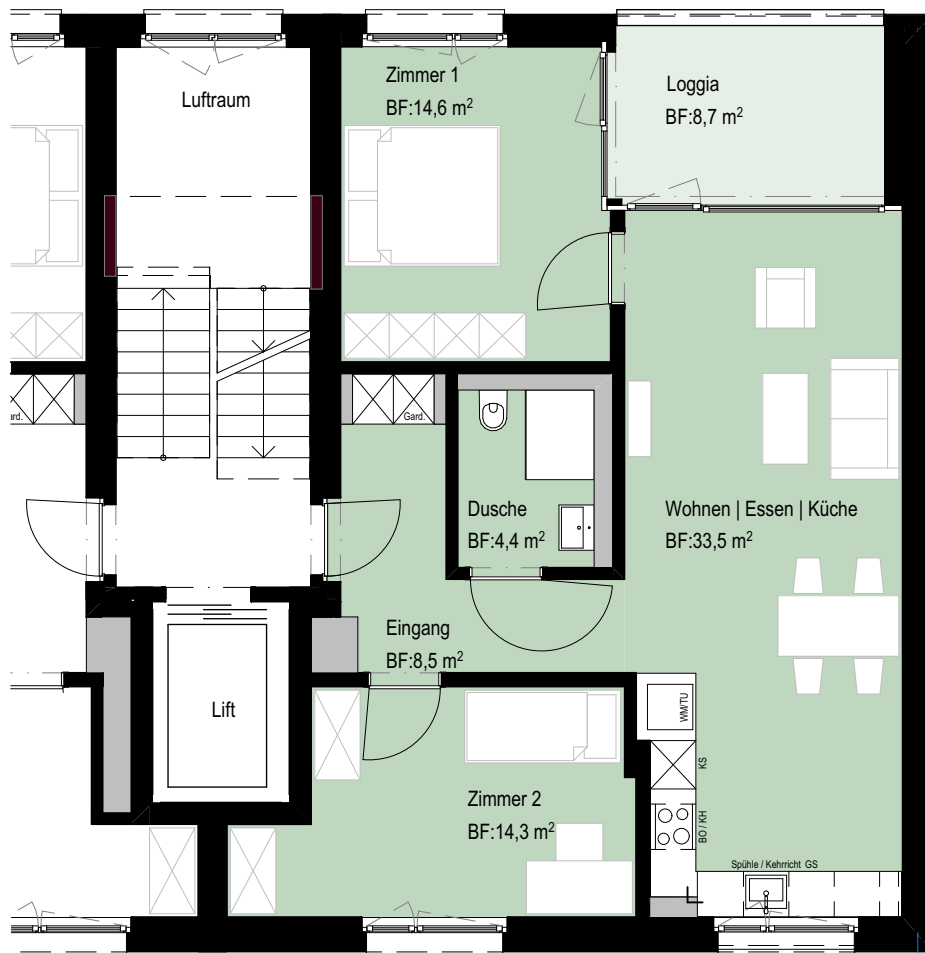
**v**barchitekten.  
www.vba.ch

# BELANO®

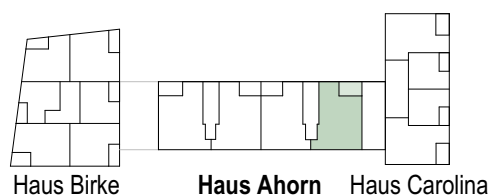
ZUHAUSE

2540 Grenchen, Girardstrasse 1-7

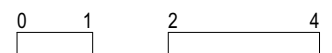
Whg. Nr.	Etage	Grösse	Wohnfläche	Balkon
A1.4	2.Vollgeschoss	3 1/2 Zimmer	75.30 m <sup>2</sup>	8.70 m <sup>2</sup>



Vermietung:  
**Erard Immobilien**  
Brühlstrasse 15  
2540 Grenchen



MST 1:100



**v**barchitekten.

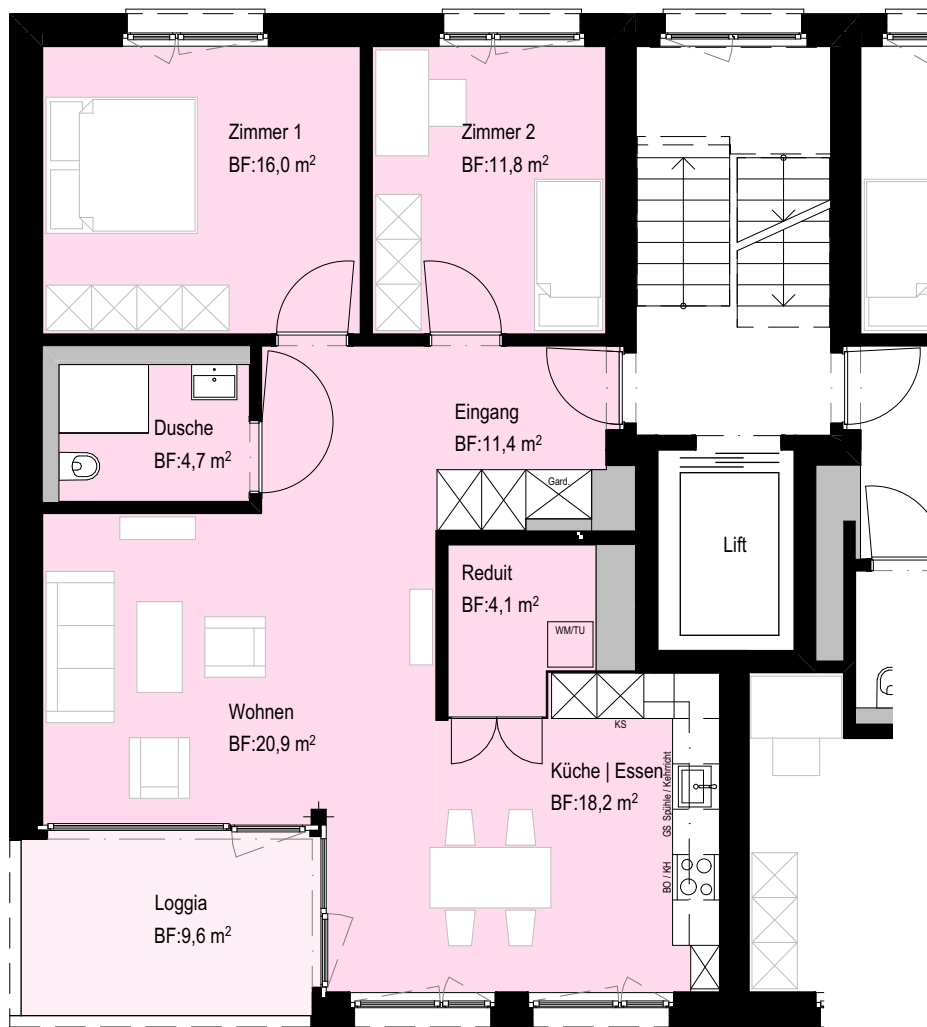
www.vba.ch

# BELANO®

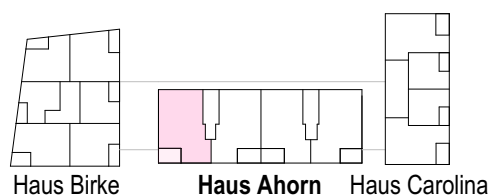
ZUHAUSE

2540 Grenchen, Girardstrasse 1-7

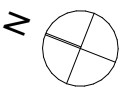
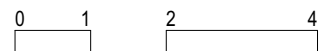
Whg. Nr.	Etage	Grösse	Wohnfläche	Balkon
A2.1	3.Vollgeschoss	3 1/2 Zimmer	87.10 m <sup>2</sup>	9.60 m <sup>2</sup>
A3.1	4.Vollgeschoss	3 1/2 Zimmer	87.10 m <sup>2</sup>	9.60 m <sup>2</sup>
A4.1	5.Vollgeschoss	3 1/2 Zimmer	87.10 m <sup>2</sup>	9.60 m <sup>2</sup>
A5.1	6.Vollgeschoss	3 1/2 Zimmer	87.10 m <sup>2</sup>	9.60 m <sup>2</sup>



Vermietung:  
**Erard Immobilien**  
Brühlstrasse 15  
2540 Grenchen



MST 1:100



**v**barchitekten.

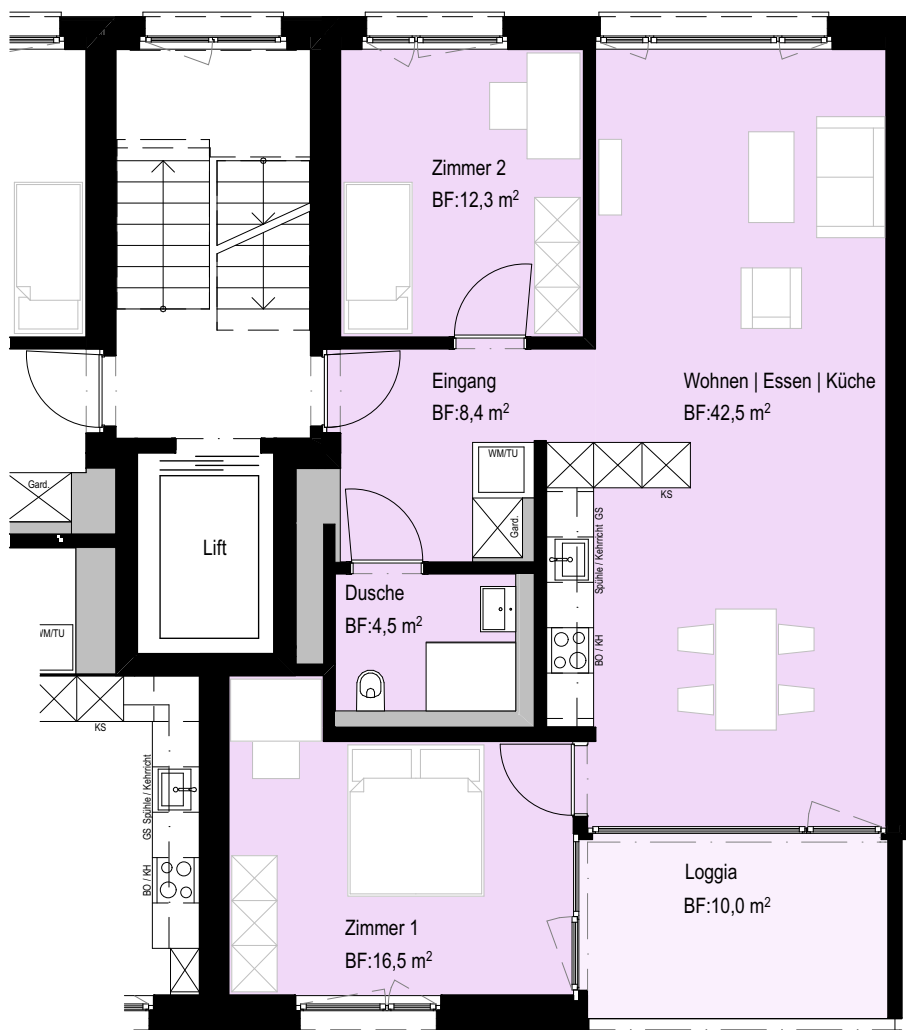
www.vba.ch

# BELANO®

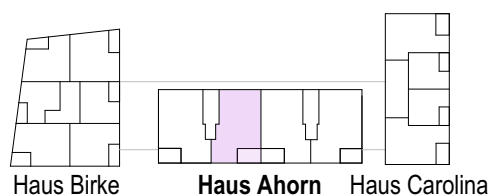
ZUHAUSE

2540 Grenchen, Girardstrasse 1-7

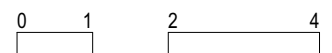
Whg. Nr.	Etage	Grösse	Wohnfläche	Balkon
A2.2	3.Vollgeschoss	3 1/2 Zimmer	84.20 m <sup>2</sup>	10.00 m <sup>2</sup>
A3.2	4.Vollgeschoss	3 1/2 Zimmer	84.20 m <sup>2</sup>	10.00 m <sup>2</sup>
A4.2	5.Vollgeschoss	3 1/2 Zimmer	84.20 m <sup>2</sup>	10.00 m <sup>2</sup>
A5.2	6.Vollgeschoss	3 1/2 Zimmer	84.20 m <sup>2</sup>	10.00 m <sup>2</sup>



Vermietung:  
**Erard Immobilien**  
Brühlstrasse 15  
2540 Grenchen



MST 1:100



**v**barchitekten.

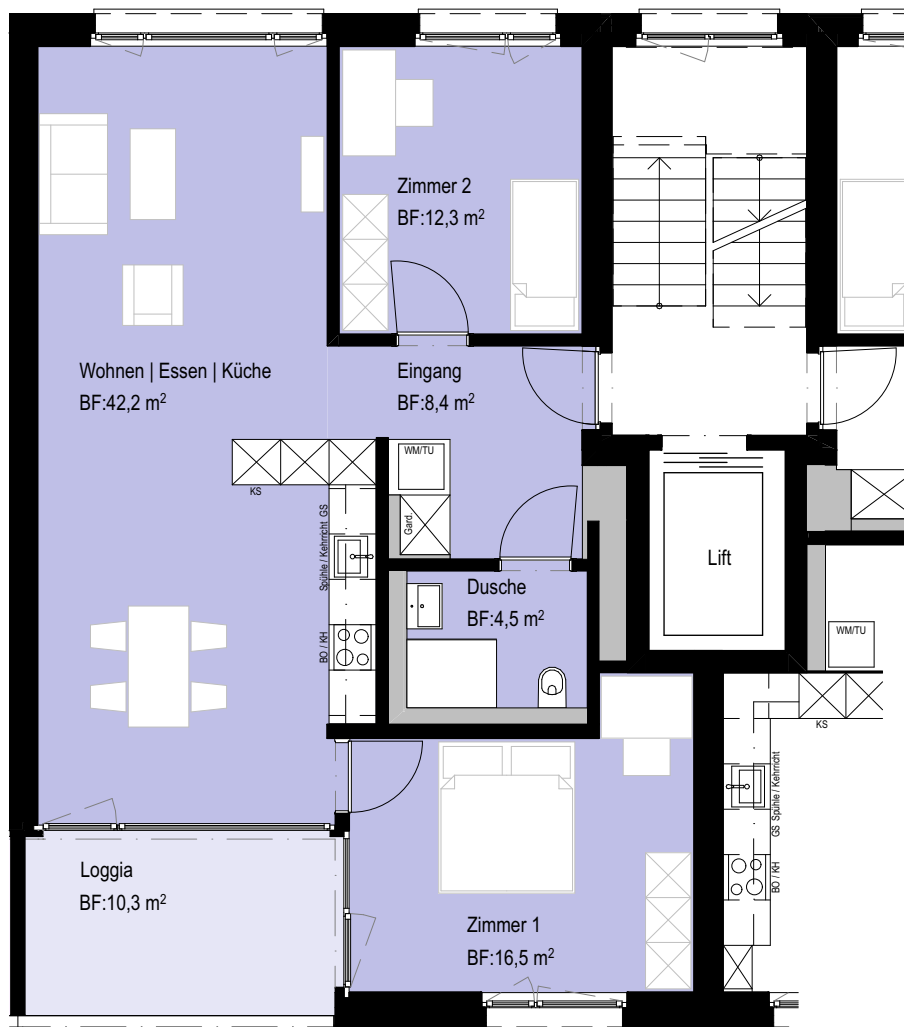
[www.vba.ch](http://www.vba.ch)

# BELANO®

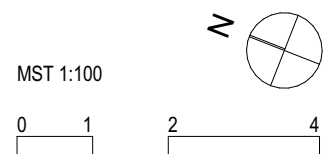
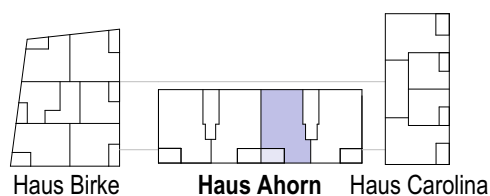
ZUHAUSE

2540 Grenchen, Girardstrasse 1-7

Whg. Nr.	Etage	Grösse	Wohnfläche	Balkon
A2.3	3.Vollgeschoss	3 1/2 Zimmer	83.90 m <sup>2</sup>	10.30 m <sup>2</sup>
A3.3	4.Vollgeschoss	3 1/2 Zimmer	83.90 m <sup>2</sup>	10.30 m <sup>2</sup>
A4.3	5.Vollgeschoss	3 1/2 Zimmer	83.90 m <sup>2</sup>	10.30 m <sup>2</sup>
A5.3	6.Vollgeschoss	3 1/2 Zimmer	83.90 m <sup>2</sup>	10.30 m <sup>2</sup>



Vermietung:  
**Erard Immobilien**  
Brühlstrasse 15  
2540 Grenchen



**v**barchitekten.

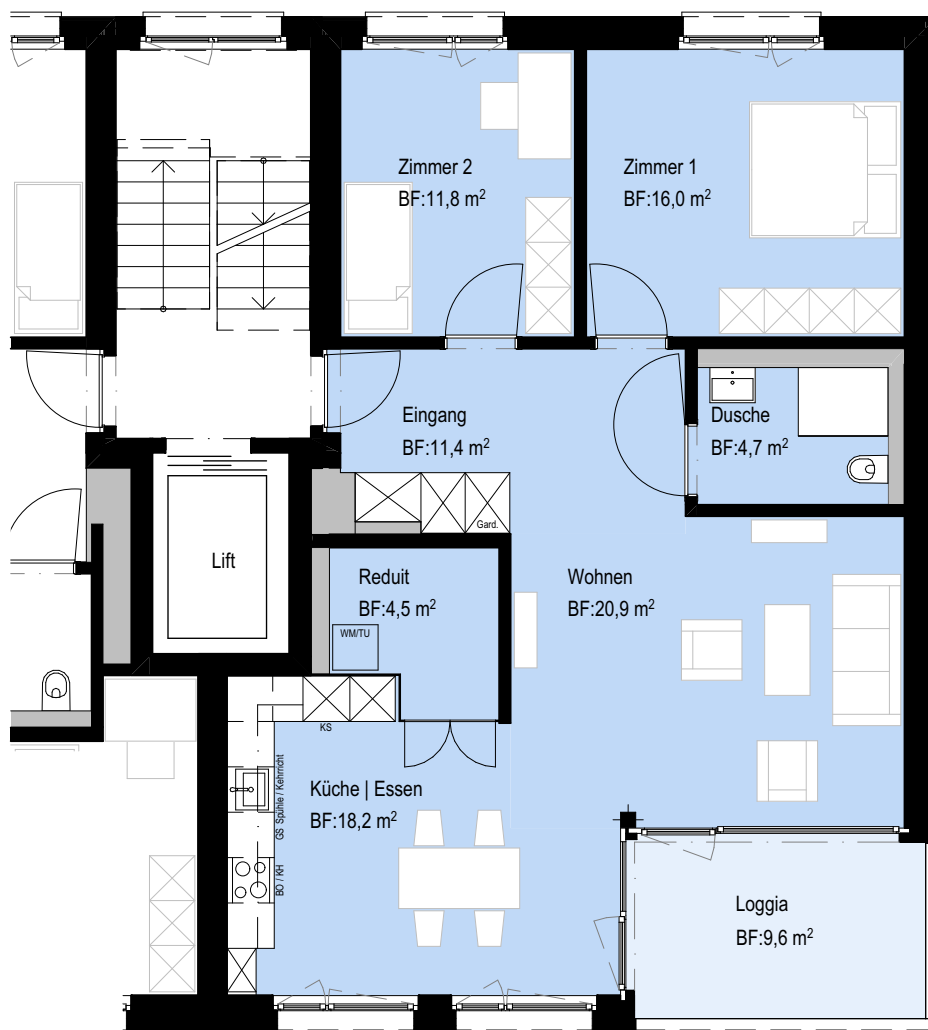
www.vba.ch

# BELANO®

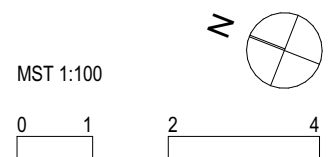
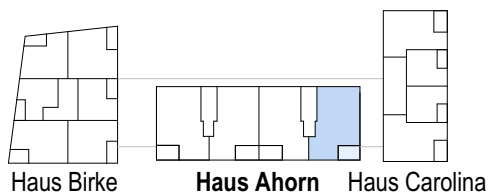
ZUHAUSE

2540 Grenchen, Girardstrasse 1-7

Whg. Nr.	Etage	Grösse	Wohnfläche	Balkon
A2.4	3.Vollgeschoss	3 1/2 Zimmer	87.50 m <sup>2</sup>	9.60 m <sup>2</sup>
A3.4	4.Vollgeschoss	3 1/2 Zimmer	87.50 m <sup>2</sup>	9.60 m <sup>2</sup>
A4.4	5.Vollgeschoss	3 1/2 Zimmer	87.50 m <sup>2</sup>	9.60 m <sup>2</sup>
A5.4	6.Vollgeschoss	3 1/2 Zimmer	87.50 m <sup>2</sup>	9.60 m <sup>2</sup>



Vermietung:  
**Erard Immobilien**  
Brühlstrasse 15  
2540 Grenchen



**v**barchitekten.

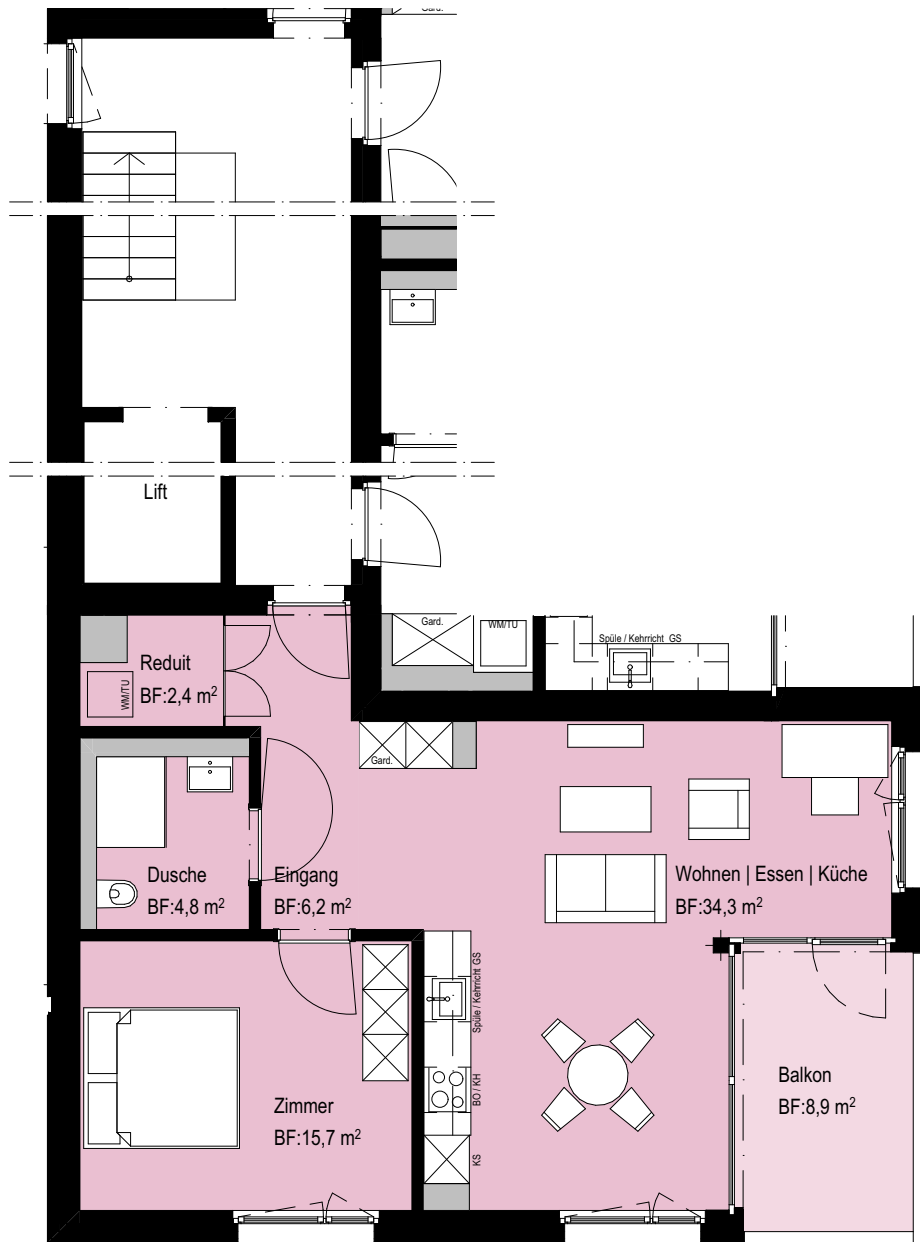
www.vba.ch

# BELANO®

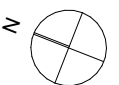
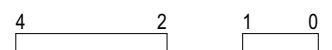
ZUHAUSE

2540 Grenchen, Girardstrasse 1-7

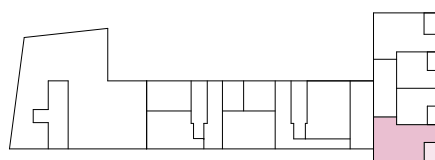
Whg. Nr.	Etage	Grösse	Wohnfläche	Balkon
C0.1	1.Vollgeschoss	2 1/2 Zimmer	63.40 m <sup>2</sup>	8.90 m <sup>2</sup>
C1.1	2.Vollgeschoss	2 1/2 Zimmer	63.40 m <sup>2</sup>	8.90 m <sup>2</sup>
C2.1	3.Vollgeschoss	2 1/2 Zimmer	63.40 m <sup>2</sup>	8.90 m <sup>2</sup>
C3.1	4.Vollgeschoss	2 1/2 Zimmer	63.40 m <sup>2</sup>	8.90 m <sup>2</sup>
C4.1	5.Vollgeschoss	2 1/2 Zimmer	63.40 m <sup>2</sup>	8.90 m <sup>2</sup>



MST 1:100



Vermietung:  
**Erard Immobilien**  
 Brühlstrasse 15  
 2540 Grenchen



Haus Birke

Haus Ahorn

Haus Carolina

**v**architekten.

www.vba.ch

# BELANO®

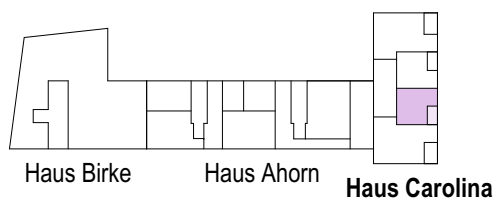
ZUHAUSE

2540 Grenchen, Girardstrasse 1-7

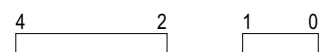
Whg. Nr.	Etage	Grösse	Wohnfläche	Balkon
C0.2	1.Vollgeschoss	1 1/2 Zimmer	33.70 m <sup>2</sup>	5.80 m <sup>2</sup>
C1.2	2.Vollgeschoss	1 1/2 Zimmer	33.70 m <sup>2</sup>	5.80 m <sup>2</sup>
C2.2	3.Vollgeschoss	1 1/2 Zimmer	33.70 m <sup>2</sup>	5.80 m <sup>2</sup>
C3.2	4.Vollgeschoss	1 1/2 Zimmer	33.70 m <sup>2</sup>	5.80 m <sup>2</sup>
C4.2	5.Vollgeschoss	1 1/2 Zimmer	33.70 m <sup>2</sup>	5.80 m <sup>2</sup>



Vermietung:  
**Erard Immobilien**  
Brühlstrasse 15  
2540 Grenchen



MST 1:100



**v**architekten.

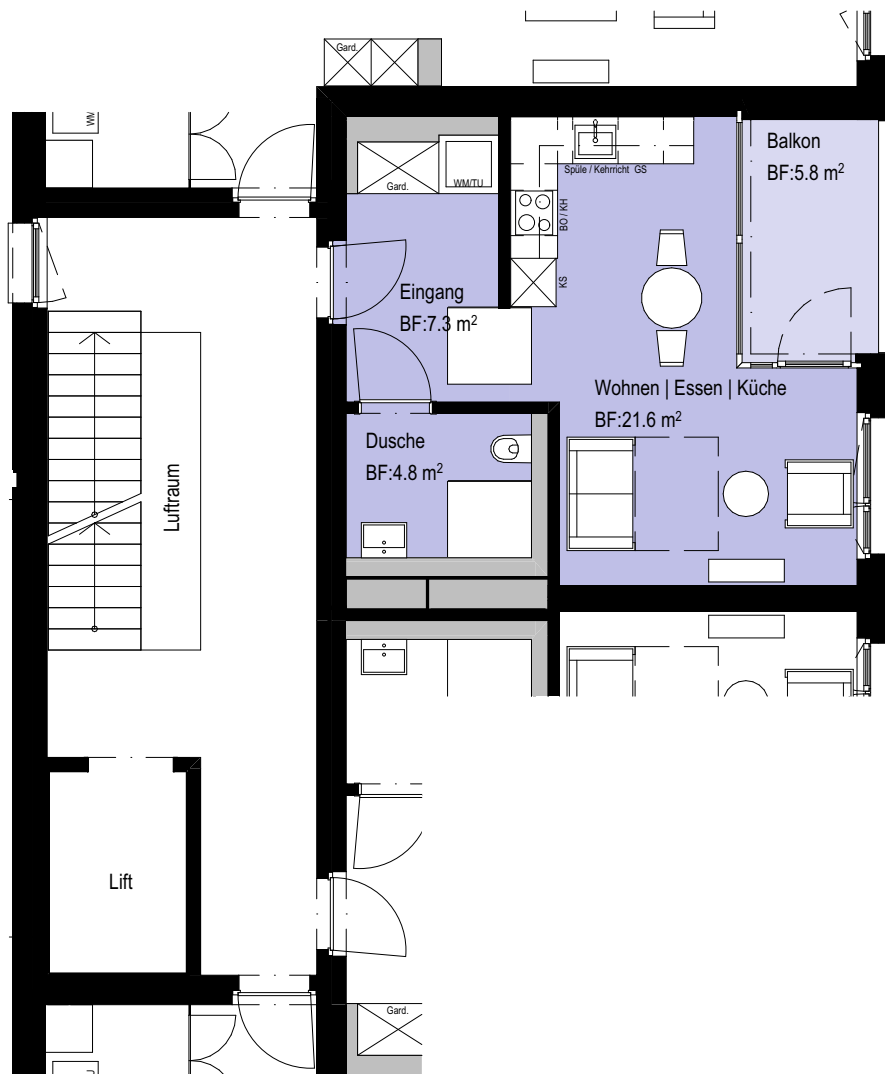
www.vba.ch

# BELANO®

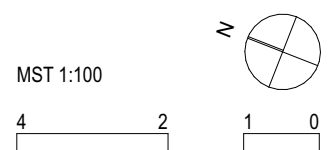
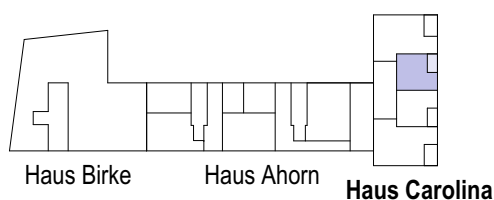
ZUHAUSE

2540 Grenchen, Girardstrasse 1-7

Whg. Nr.	Etage	Grösse	Wohnfläche	Balkon
C0.3	1.Vollgeschoss	1 1/2 Zimmer	33.70 m <sup>2</sup>	5.80 m <sup>2</sup>
C1.3	2.Vollgeschoss	1 1/2 Zimmer	33.70 m <sup>2</sup>	5.80 m <sup>2</sup>
C2.3	3.Vollgeschoss	1 1/2 Zimmer	33.70 m <sup>2</sup>	5.80 m <sup>2</sup>
C3.3	4.Vollgeschoss	1 1/2 Zimmer	33.70 m <sup>2</sup>	5.80 m <sup>2</sup>
C4.3	5.Vollgeschoss	1 1/2 Zimmer	33.70 m <sup>2</sup>	5.80 m <sup>2</sup>



Vermietung:  
**Erard Immobilien**  
Brühlstrasse 15  
2540 Grenchen



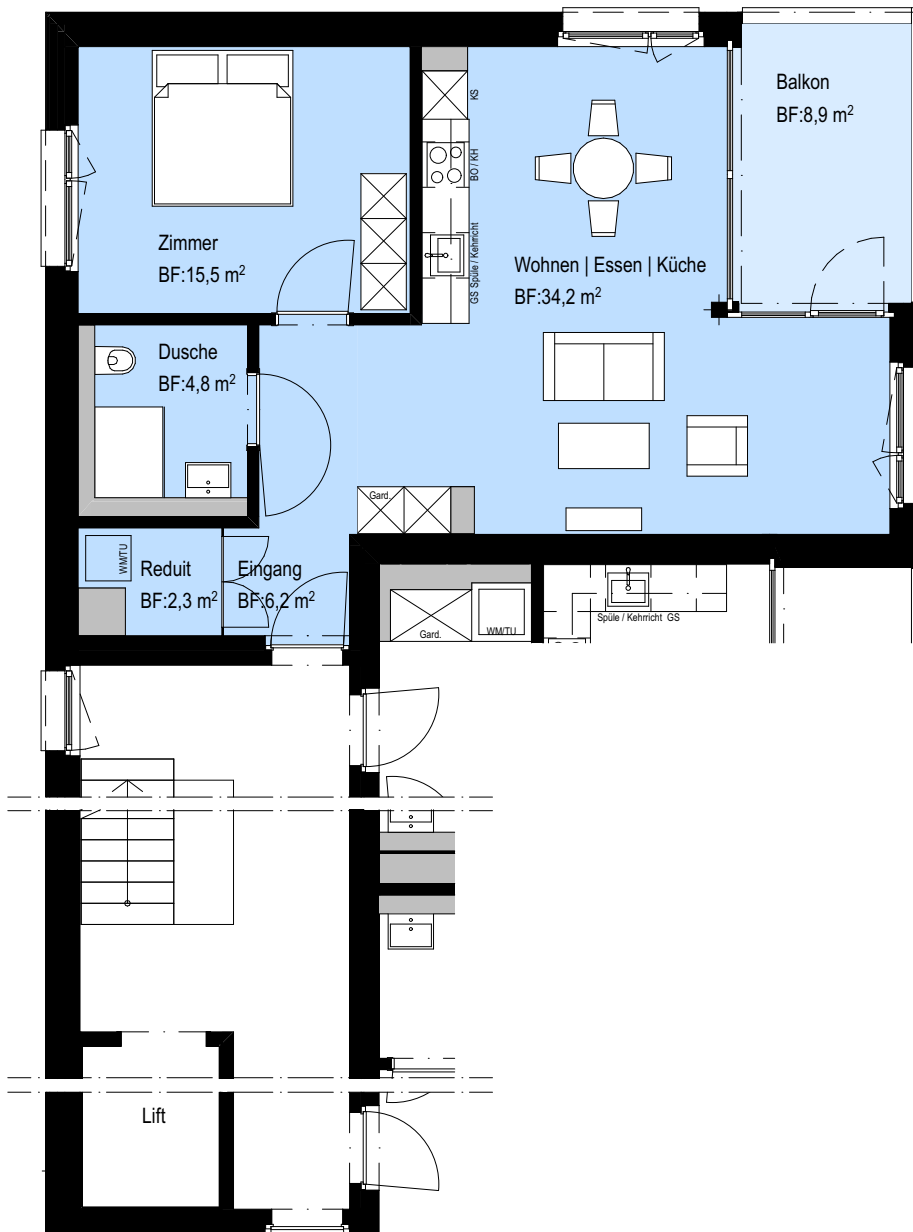
**v**architekten.  
www.vba.ch

# BELANO®

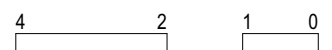
ZUHAUSE

2540 Grenchen, Girardstrasse 1-7

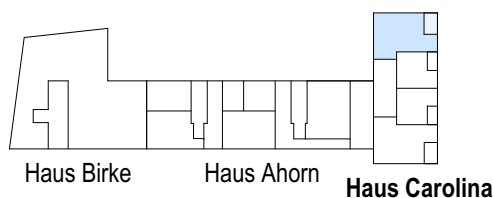
Whg. Nr.	Etage	Grösse	Wohnfläche	Balkon
C0.4	1.Vollgeschoss	2 1/2 Zimmer	63.00 m <sup>2</sup>	8.90 m <sup>2</sup>
C1.4	2.Vollgeschoss	2 1/2 Zimmer	63.00 m <sup>2</sup>	8.90 m <sup>2</sup>
C2.4	3.Vollgeschoss	2 1/2 Zimmer	63.00 m <sup>2</sup>	8.90 m <sup>2</sup>
C3.4	4.Vollgeschoss	2 1/2 Zimmer	63.00 m <sup>2</sup>	8.90 m <sup>2</sup>
C4.4	5.Vollgeschoss	2 1/2 Zimmer	63.00 m <sup>2</sup>	8.90 m <sup>2</sup>



MST 1:100



Vermietung:  
**Erard Immobilien**  
 Brühlstrasse 15  
 2540 Grenchen



**v**architekten.

www.vba.ch