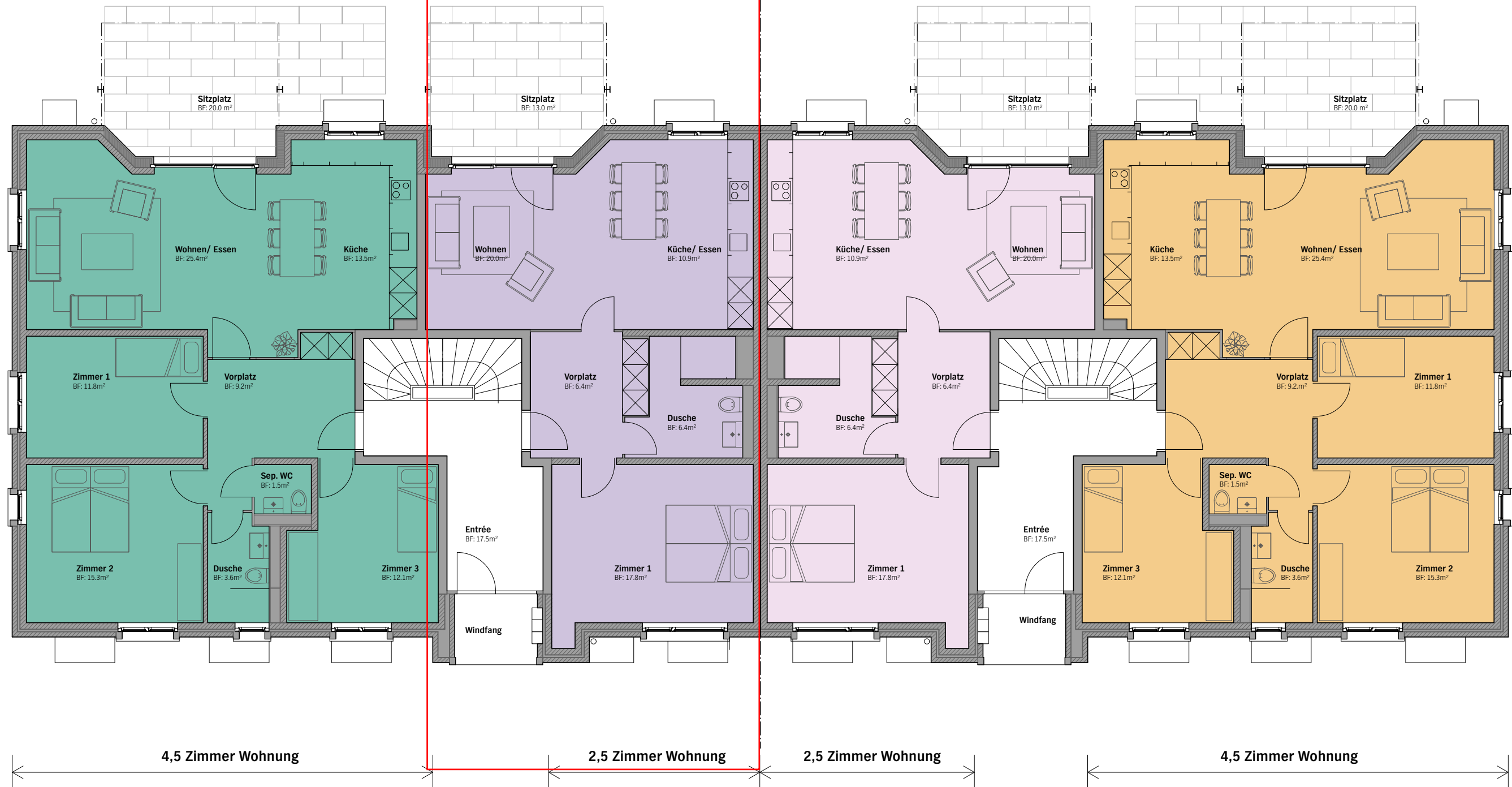


WHG 0013



## Erdgeschoss

1:100

Wohnüberbauung Griemattweg/Auweg Sissach



### Griemattweg 20

3.5 ZWhg 20_2_2	DG	2.5 ZWhg 20_2_1	2.5 ZWhg 22_2_2	DG	3.5 ZWhg 22_2_1
4.5 ZWhg 20_1_2	OG	3.5 ZWhg 20_1_1	3.5 ZWhg 22_1_2	OG	4.5 ZWhg 22_1_1
4.5 ZWhg 20_0_2	Eingang	2.5 ZWhg 20_0_1	2.5 ZWhg 22_0_2	Eingang	4.5 ZWhg 22_0_1

UG

### Griemattweg 22

3.5 ZWhg 22_2_2	DG	3.5 ZWhg 22_1_2	3.5 ZWhg 22_1_1	OG	4.5 ZWhg 22_1_1
2.5 ZWhg 22_2_1	DG	3.5 ZWhg 22_1_2	3.5 ZWhg 22_1_1	OG	4.5 ZWhg 22_1_1
2.5 ZWhg 22_0_2	Eingang	2.5 ZWhg 22_0_2	2.5 ZWhg 22_0_2	Eingang	4.5 ZWhg 22_0_1

UG