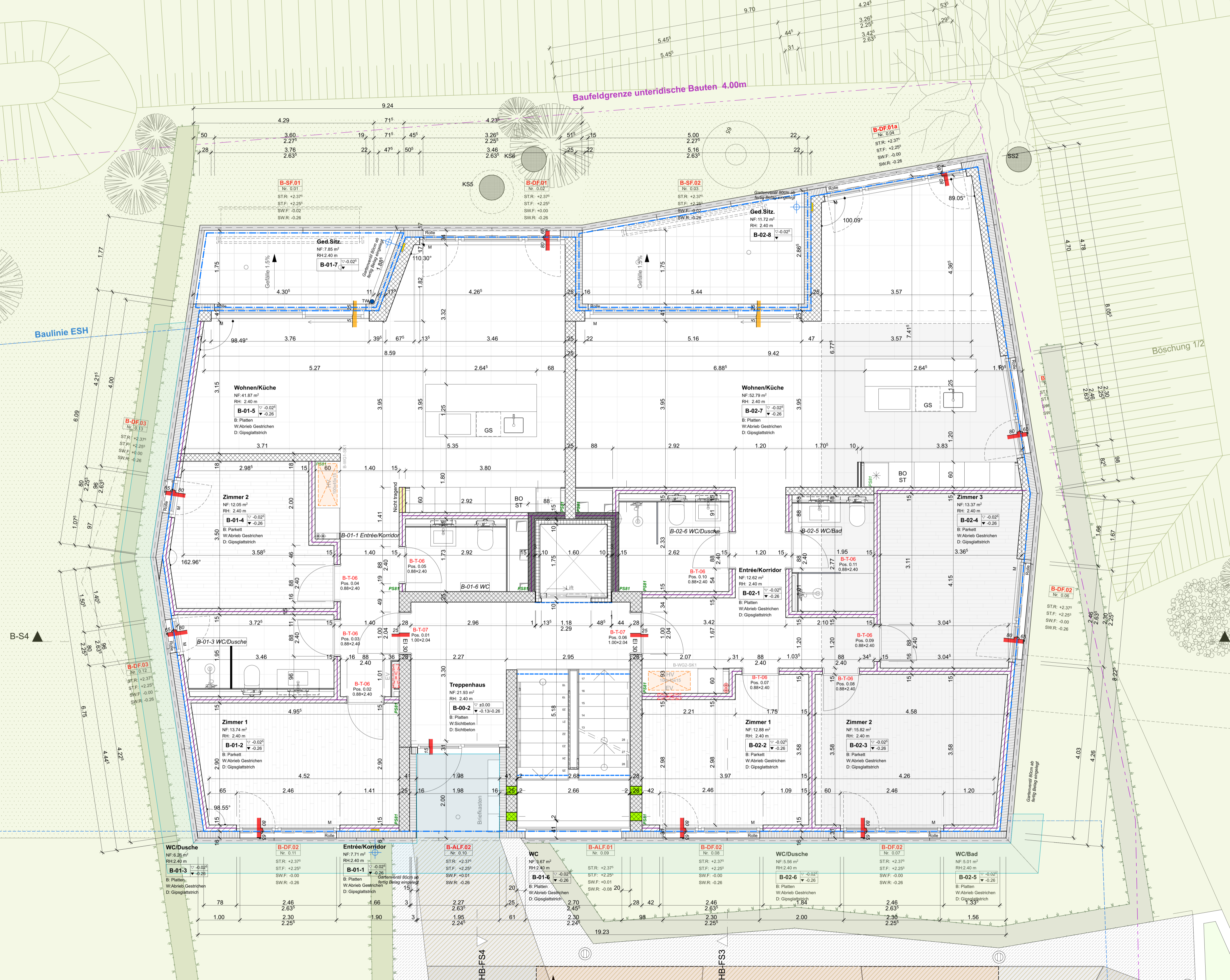
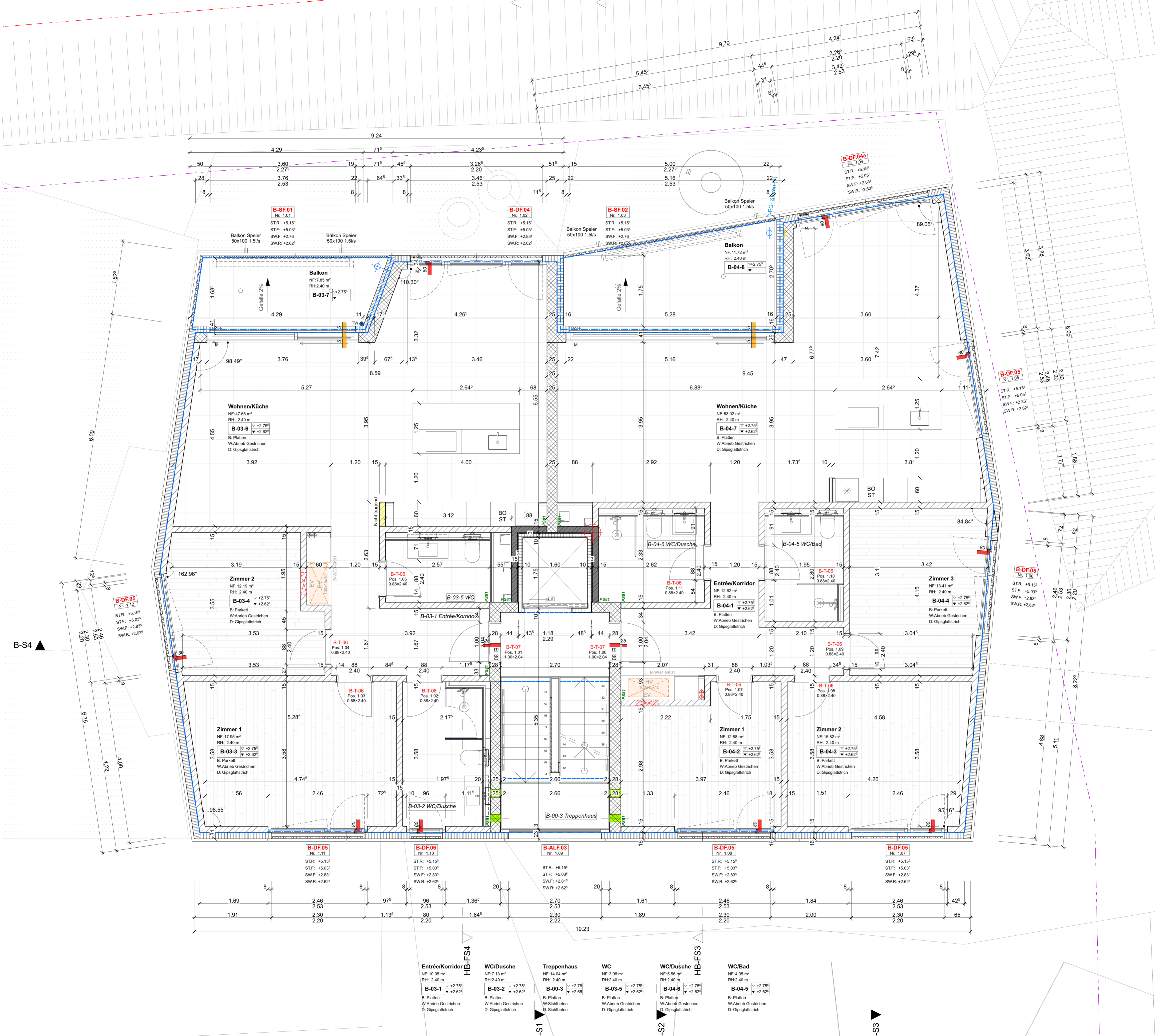


Baufeldgrenze unterirdische Bauten 4.00m





B-SF.01
Nr. 1.01
STR: +5.15°
STF: +5.03°
SWF: +2.76°
SWR: +2.62°

B-DF.04
Nr. 1.02
STR: +5.15°
STF: +5.03°
SWF: +2.83°
SWR: +2.62°

B-SF.02
Nr. 1.03
STR: +5.15°
STF: +5.03°
SWF: +2.76°
SWR: +2.62°

B-DF.04a
Nr. 1.04
STR: +5.15°
STF: +5.03°
SWF: +2.83°
SWR: +2.62°

B-DF.05
Nr. 1.05
STR: +5.15°
STF: +5.03°
SWF: +2.83°
SWR: +2.62°

B-DF.05
Nr. 1.06
STR: +5.15°
STF: +5.03°
SWF: +2.83°
SWR: +2.62°

B-DF.05
Nr. 1.12
STR: +5.15°
STF: +5.03°
SWF: +2.83°
SWR: +2.62°

B-DF.05
Nr. 1.11
STR: +5.15°
STF: +5.03°
SWF: +2.83°
SWR: +2.62°

B-DF.06
Nr. 1.10
STR: +5.15°
STF: +5.03°
SWF: +2.83°
SWR: +2.62°

B-ALF.03
Nr. 1.09
STR: +5.15°
STF: +5.03°
SWF: +2.81°
SWR: +2.62°

B-DF.05
Nr. 1.08
STR: +5.15°
STF: +5.03°
SWF: +2.83°
SWR: +2.62°

B-DF.05
Nr. 1.07
STR: +5.15°
STF: +5.03°
SWF: +2.83°
SWR: +2.62°

Entrée/Korridor
NF: 10.05 m²
RH: 2.40 m
B-03-1 ▽ +2.75°
B: Platten
W: Abrieb Gestrichen
D: Gipsplattstrich

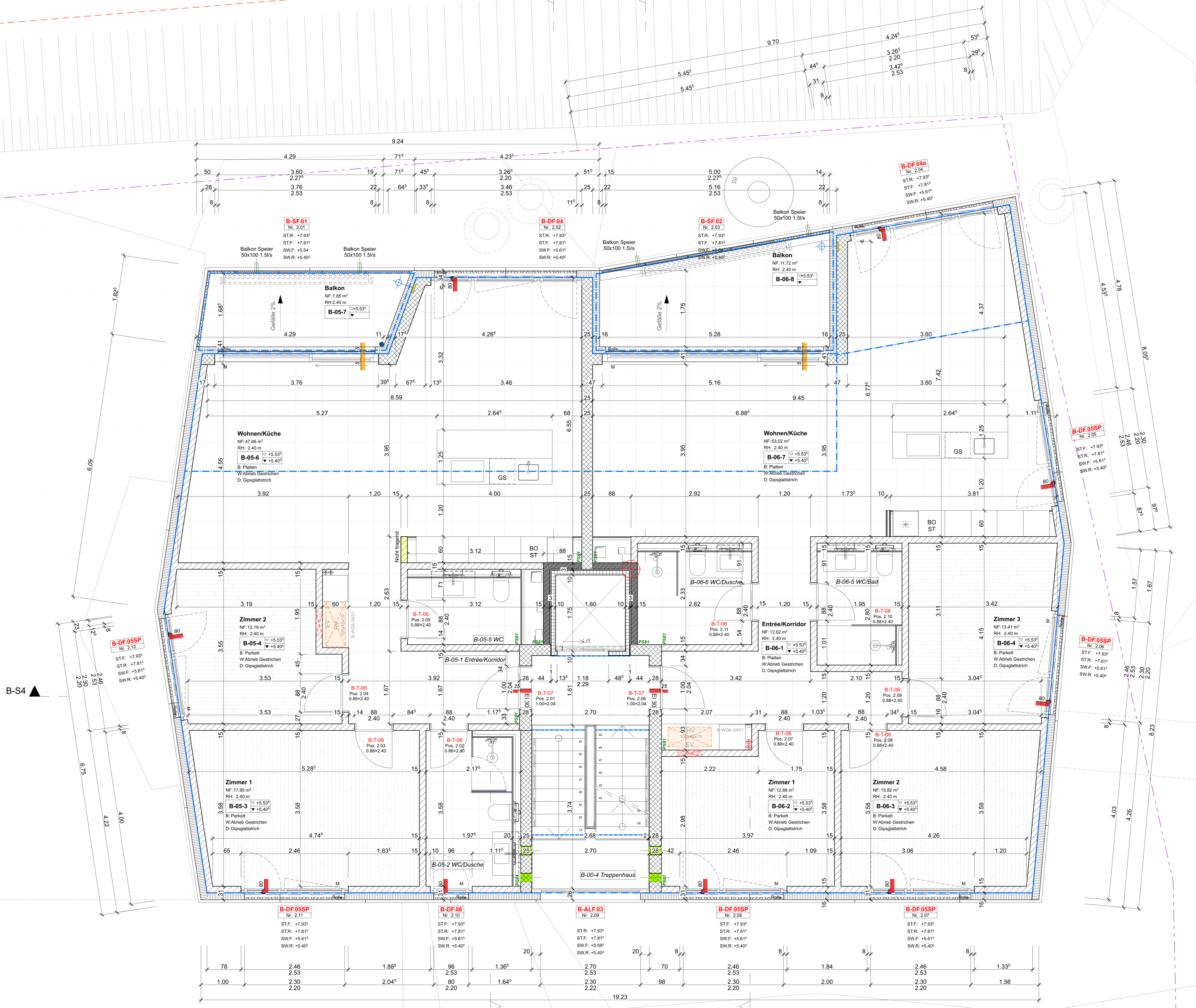
WC/Dusche
NF: 7.13 m²
RH: 2.40 m
B-03-2 ▽ +2.75°
B: Platten
W: Abrieb Gestrichen
D: Gipsplattstrich

Treppenhaus
NF: 14.04 m²
RH: 2.40 m
B-00-3 ▽ +2.78°
B: Platten
W: Sichtbeton
D: Sichtbeton

WC
NF: 3.98 m²
RH: 2.40 m
B-03-5 ▽ +2.75°
B: Platten
W: Abrieb Gestrichen
D: Gipsplattstrich

WC/Dusche
NF: 5.56 m²
RH: 2.40 m
B-04-6 ▽ +2.75°
B: Platten
W: Abrieb Gestrichen
D: Gipsplattstrich

WC/Bad
NF: 4.95 m²
RH: 2.40 m
B-04-5 ▽ +2.75°
B: Platten
W: Abrieb Gestrichen
D: Gipsplattstrich



B-S4

B-DF.05SP
Nr. 2.12
STR: +7.93°
STF: +7.81°
SWF: +5.61°
SWR: +5.40°

B-SF.01
Nr. 2.01
STR: +7.93°
STF: +7.81°
SWF: +5.54°
SWR: +5.40°

B-DF.04
Nr. 2.02
STR: +7.93°
STF: +7.81°
SWF: +5.61°
SWR: +5.40°

B-SF.02
Nr. 2.03
STR: +7.93°
STF: +7.81°
SWF: +5.54°
SWR: +5.40°

B-DF.04a
Nr. 2.04
STR: +7.93°
STF: +7.81°
SWF: +5.61°
SWR: +5.40°

B-DF.05SP
Nr. 2.05
STR: +7.93°
STF: +7.81°
SWF: +5.61°
SWR: +5.40°

B-DF.05SP
Nr. 2.06
STR: +7.93°
STF: +7.81°
SWF: +5.61°
SWR: +5.40°

B-DF.05SP
Nr. 2.11
STR: +7.93°
STF: +7.81°
SWF: +5.61°
SWR: +5.40°

B-DF.06
Nr. 2.10
STR: +7.93°
STF: +7.81°
SWF: +5.61°
SWR: +5.40°

B-ALF.03
Nr. 2.09
STR: +7.93°
STF: +7.81°
SWF: +5.59°
SWR: +5.40°

B-DF.05SP
Nr. 2.08
STR: +7.93°
STF: +7.81°
SWF: +5.61°
SWR: +5.40°

B-DF.05SP
Nr. 2.07
STR: +7.93°
STF: +7.81°
SWF: +5.61°
SWR: +5.40°

Entrée/Korridor
NF: 10.15 m²
RH: 2.40 m
B-05-1 ▽ +5.53°
▽ +5.40°
B: Platten
W: Abrieb Gestrichen
D: Gipsglattstrich

WC/Dusche
NF: 7.13 m²
RH: 2.40 m
B-05-2 ▽ +5.53°
▽ +5.43°
B: Platten
W: Abrieb Gestrichen
D: Gipsglattstrich

Treppenhaus
NF: 14.04 m²
RH: 2.40 m
B-00-4 ▽ +5.56°
▽ +5.43°
B: Platten
W: Sichtbeton
D: Sichtbeton

WC
NF: 3.98 m²
RH: 2.40 m
B-05-5 ▽ +5.53°
▽ +5.40°
B: Platten
W: Abrieb Gestrichen
D: Gipsglattstrich

WC/Dusche
NF: 5.56 m²
RH: 2.40 m
B-06-6 ▽ +5.53°
▽ +5.40°
B: Platten
W: Abrieb Gestrichen
D: Gipsglattstrich

WC/Bad
NF: 4.95 m²
RH: 2.40 m
B-06-5 ▽ +5.53°
▽ +5.40°
B: Platten
W: Abrieb Gestrichen
D: Gipsglattstrich

