

HEIZUNGSVERTEILUNG

SAHNTROVERTEILUNG

BOILER 400 LITER



VW/TM

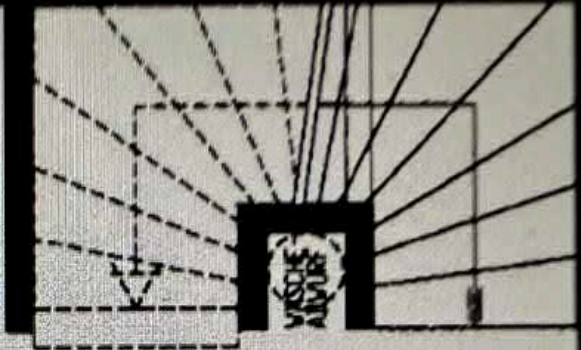


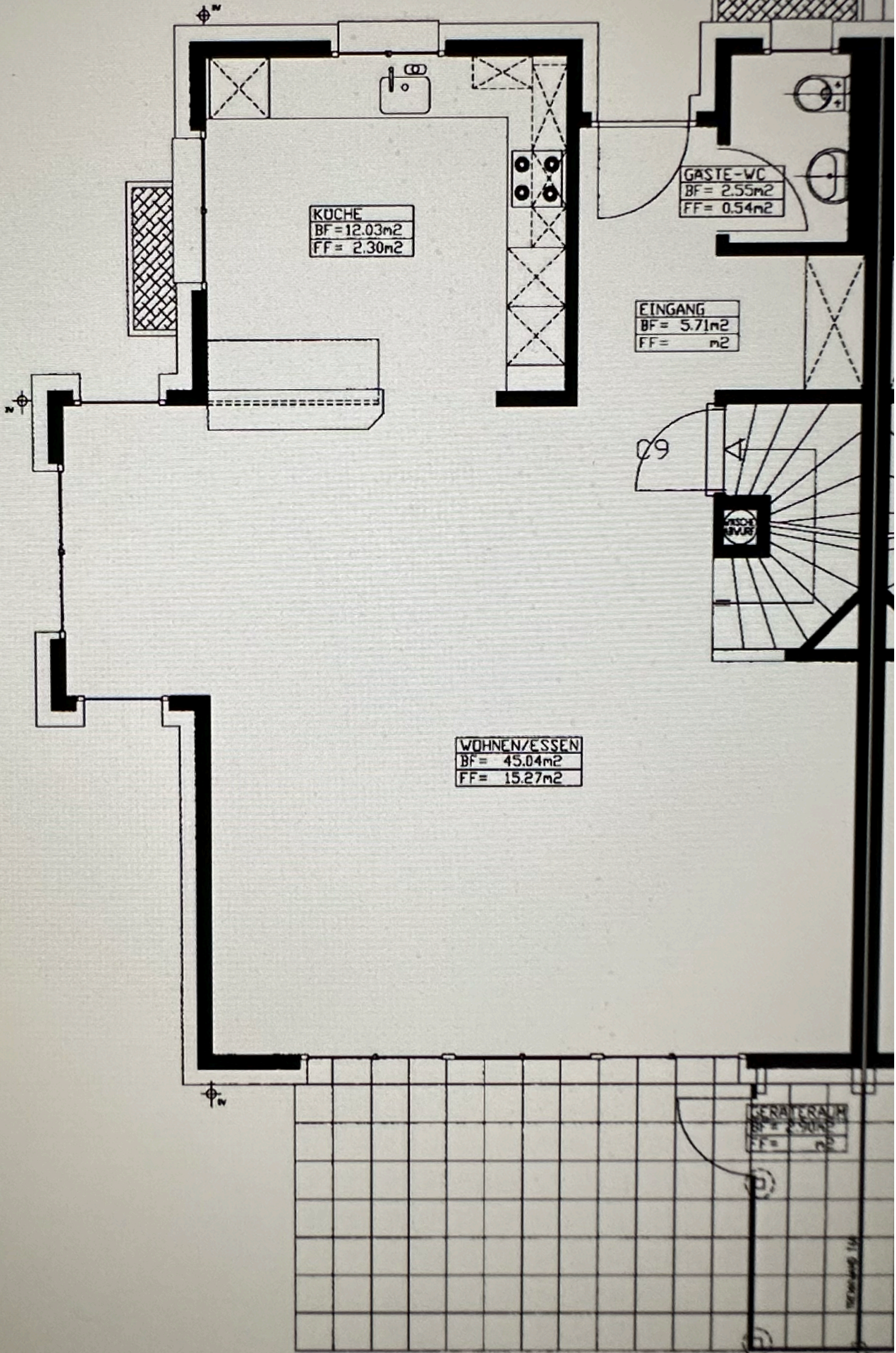
WASCHEN
BF = 14.06m <sup>2</sup>
FF = 0.72m <sup>2</sup>

KELLER
BF = 21.45m <sup>2</sup>
FF = 0.72m <sup>2</sup>

C9

VESCHÉ  
ALBURE





ELTERN  
BF = 14.88m<sup>2</sup>  
FF = 1.40m<sup>2</sup>

SCHRANKR.  
BF = 6.57m<sup>2</sup>  
FF = 0.47m<sup>2</sup>

BAD  
BF = 12.38m<sup>2</sup>  
FF = 1.40m<sup>2</sup>

KORRIDOR  
BF = 5.05m<sup>2</sup>  
FF = m<sup>2</sup>

ZIMMER 1  
BF = 12.91m<sup>2</sup>  
FF = 1.40m<sup>2</sup>

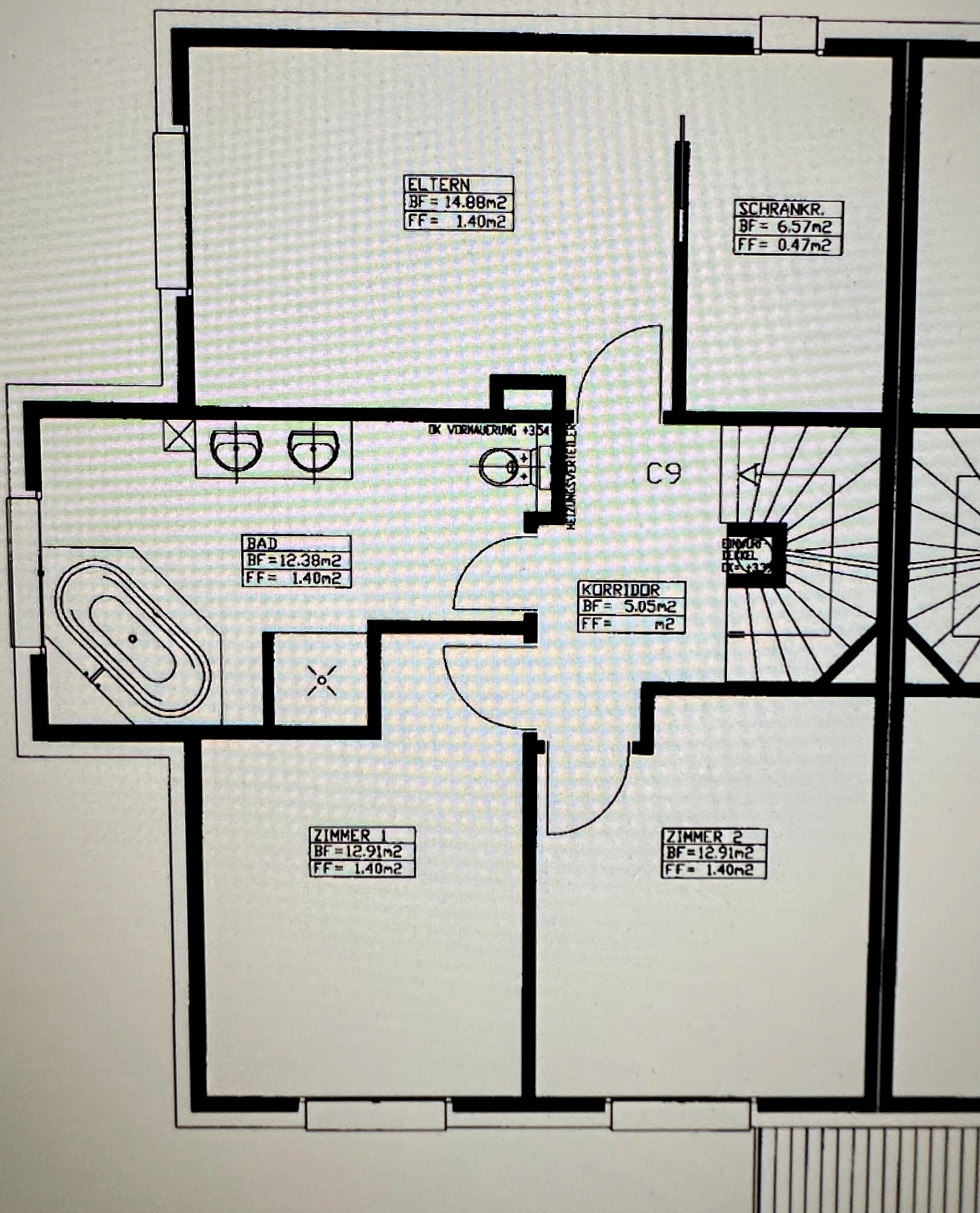
ZIMMER 2  
BF = 12.91m<sup>2</sup>  
FF = 1.40m<sup>2</sup>

DK VORHAUUNG +3.54

HEIZUNGSVERTEILER

C9

BIMMER  
HEIZKEL  
DK = +3.32



Pex KW 1x20/ 1x16  
Pex WW 1x20/ 1x16

ZIMMER 4  
32 + 5,30  
+ 4,99

BODENFLÄCHE 27,46 m<sup>2</sup>  
- TRITTSCHALLWATTE  
- ISOVER PS81 2 cm  
- BRUNNPLATTE FA. GEMEN 4 cm  
- BODENHEIZUNG UB 4cm  
- FERTIGBELAG 1 cm

HEIZUNGSVERTEILER

Entl. PEH110  
Abzweig 3/8 1/2"

190

90

GANG 2,56m<sup>2</sup>  
30 + 5,30  
+ 4,99

DK BRÜSTUNG  
+6,30

ZIMMER 3  
31 + 5,30  
+ 4,99

BODENFLÄCHE 31,30 m<sup>2</sup>  
- TRITTSCHALLWATTE  
- ISOVER PS81 2 cm  
- BRUNNPLATTE FA. GEMEN 4 cm  
- BODENHEIZUNG UB 4cm  
- FERTIGBELAG 1 cm

RF

11 + 7,20  
30 + 4,99