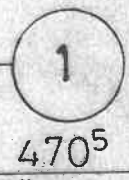


P.T.

130

6.50

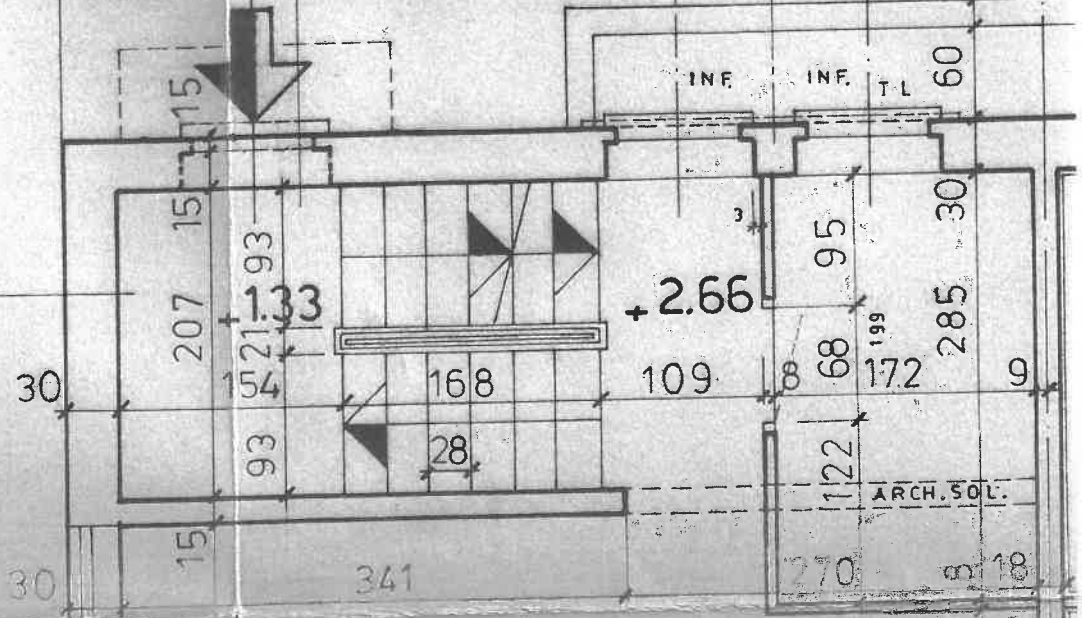
92 78 200 78 45 78 158  
 131 205 278 78 123 78 236



470<sup>5</sup>

179<sup>5</sup>

ENTRATA + 399 V.P. SEZ. N° 4

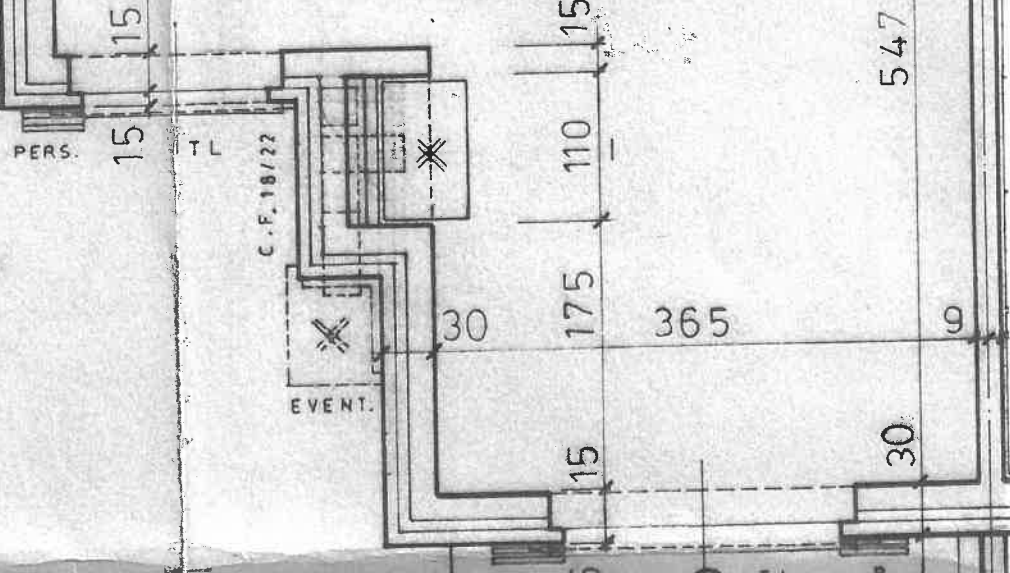


MATT. COTTO  
 ISOLVA  
 K = 030

30 15 207 15 1.93 30 154 168 109 8 68 95 172 285 30 9  
 93 28 122 199 270 3 18  
 30 15 341 611 9

CAMINO VEDI DETT.

MURETTO V.S.P.



C.F. 18/22

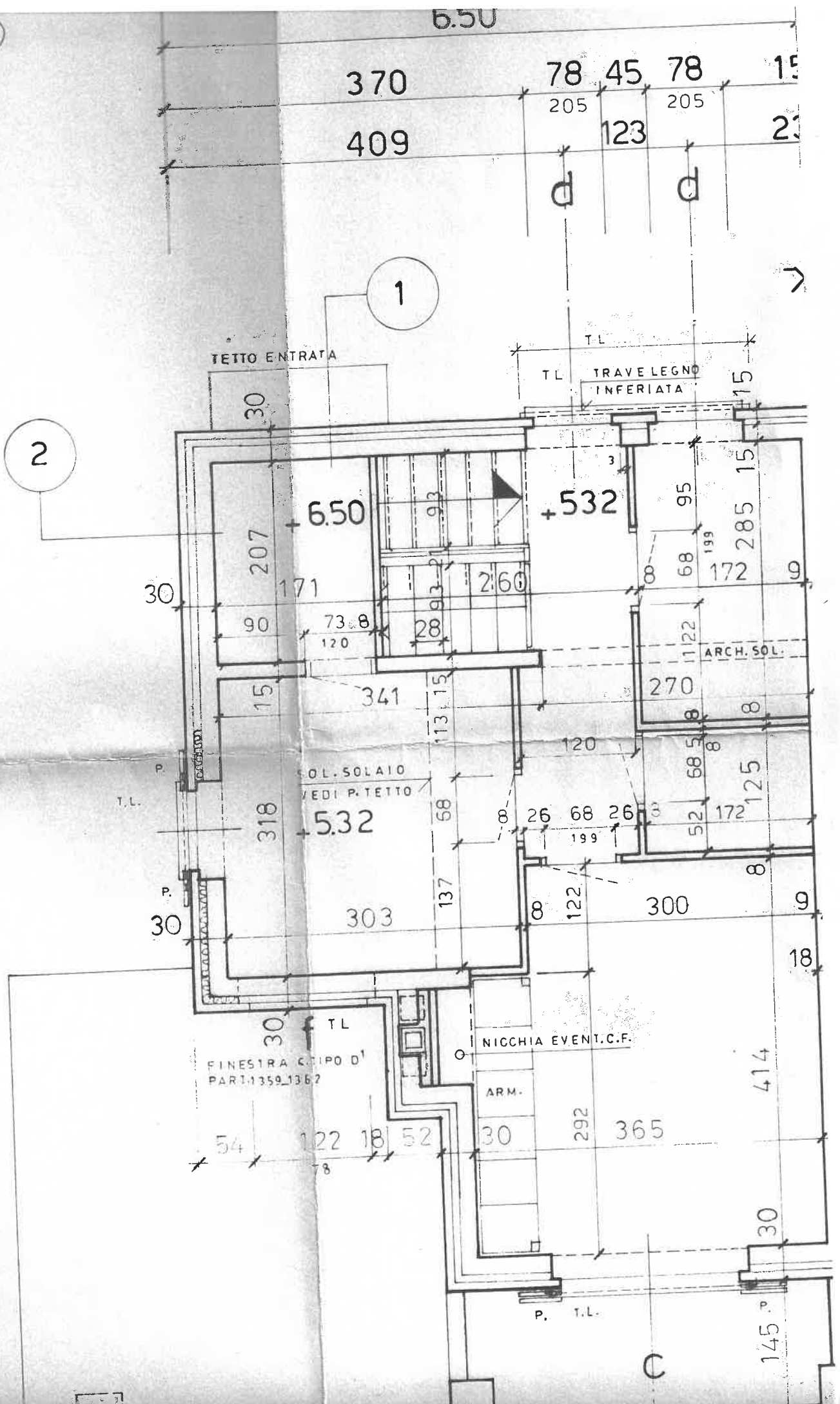
EVENT.

PERS.

TL

15 110 15 547  
 30 175 365 9  
 15 30

A.P.



370  
409

78 45 78 15  
205 123 205 23

6.50

1

2

TETTO ENTRATA

TL TRAVE LEGNO INFERIATA

30

TL

30

15

207

TL

171

3

90

532

73.8

95

120

68

15

199

341

172

113

9

68

ARCH. SOL.

318

270

5.32

120

303

8

137

52

30

199

TL

172

FINESTRA TIPO D1

125

PAR. 1359\_1362

8

54

300

122

9

18

18

52

30

8

292

365

ARM.

30

292

365

414

30

145

30

TL

C



6.50

370

78

45

78

15

409

78

123

78

23



150

78

178

-0.03  
68 15

ARM. 207

154

168

109

222

165

5

30

114

28

15

362

9

25

64

319

8

109

15

165

9

66

346

90

205

68

199

5

176

195

8

199

-0.03

8+0.00

-0.03

15

60

5

238

8

117

68

185

15

9

20

176

238

168

15

168

370

9

18

FINESTRA  
CASA TIPO D1  
PART.1359.62

25

EVENT.

110

468

PERFECTA SP.ESS.MM.35

54

122

18

52

25

175

370

9

398

78

10

5

15