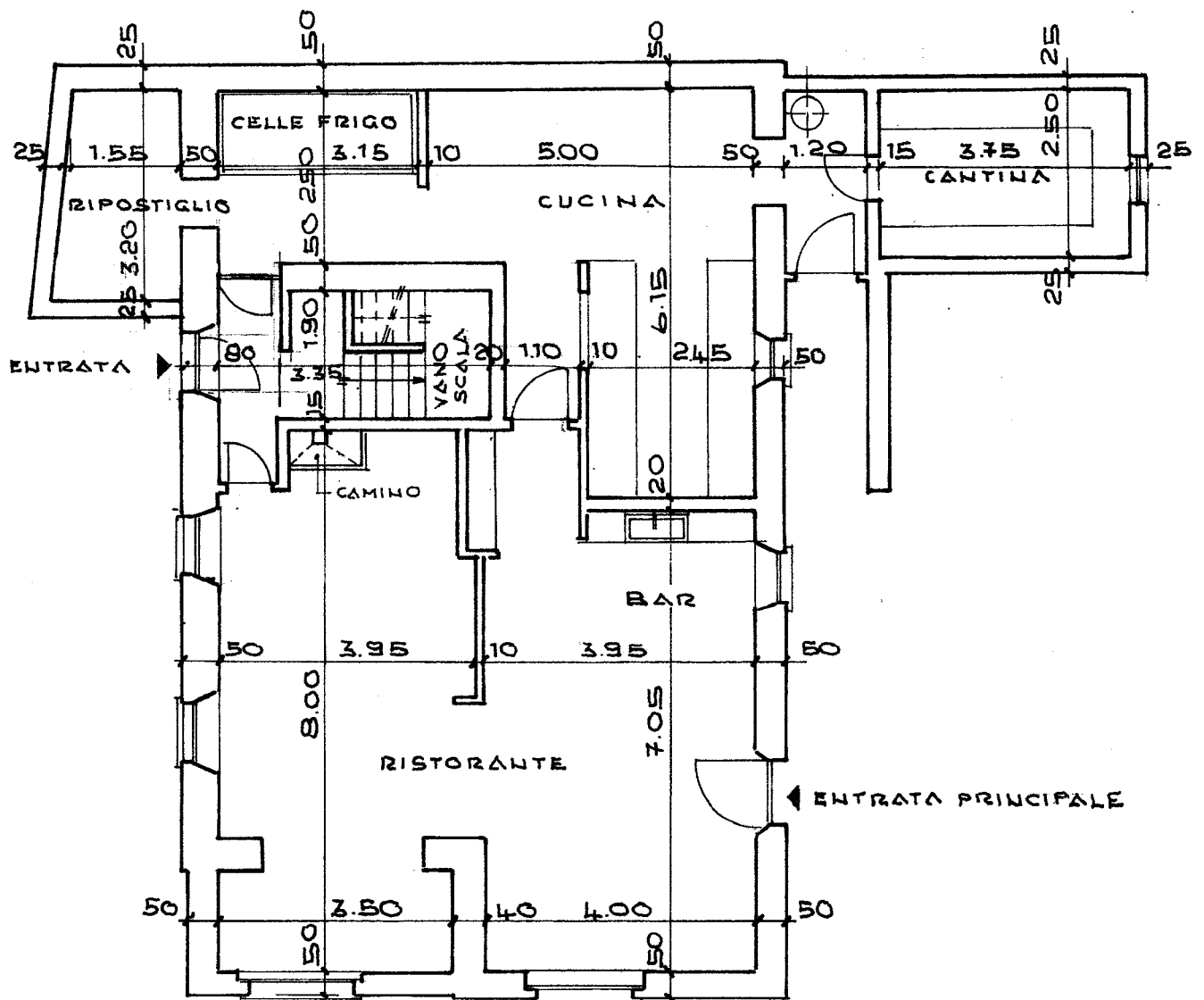


**PIANO TERRENO 1:100**  
**RISTORANTE IL PARADISO**  
**MAPPALE 633 ORSELINA**

RISTORANTE + BAR = m <sup>2</sup>	72.50
CUCINA + CELLE FRIGO = m <sup>2</sup>	42.70
RIPOSTIGLIO = m <sup>2</sup>	7.05
CANTINA = m <sup>2</sup>	16.05
VANO SCALA = m <sup>2</sup>	11.70
<b>TOTALE</b> = m <sup>2</sup>	<b>150.00</b>

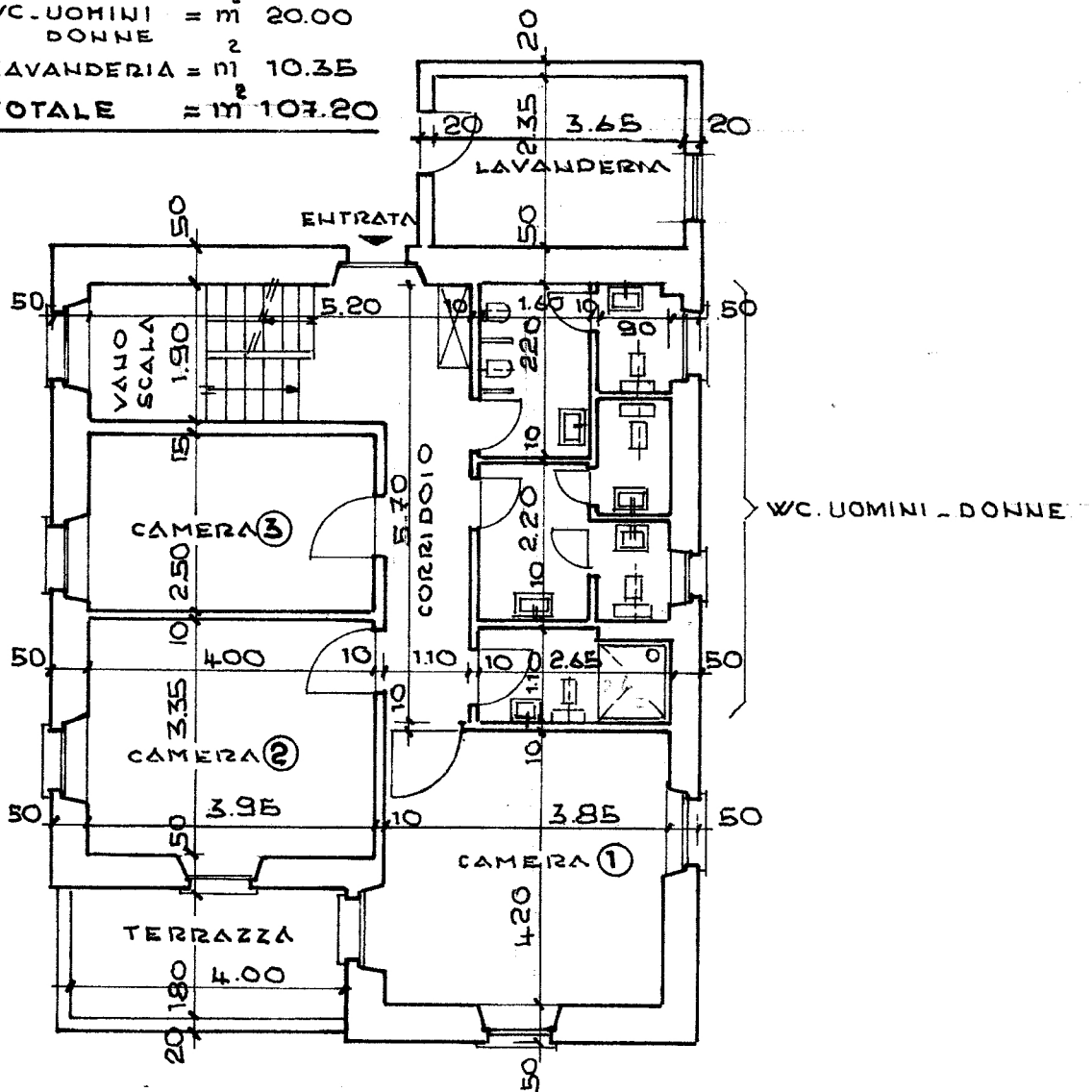


# PRIMO PIANO 1:100

## RISTORANTE IL PARADISO

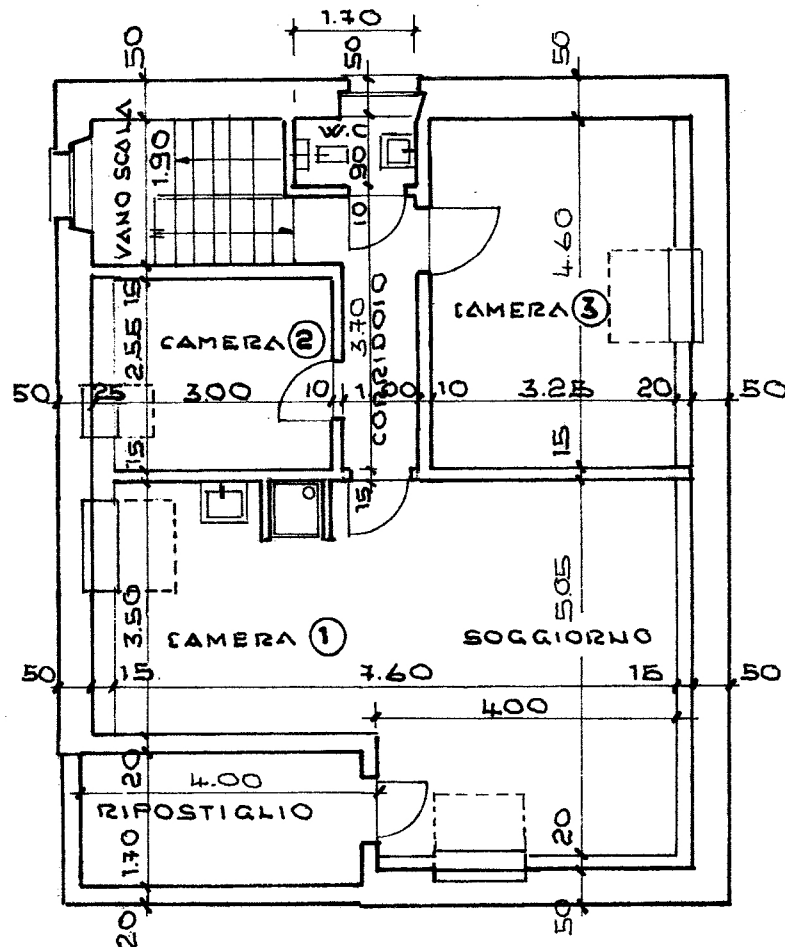
### MAPPALE 633 ORSELINA

CAMERA ①	= m <sup>2</sup>	22.05
CAMERA ②	= m <sup>2</sup>	17.75
CAMERA ③	= m <sup>2</sup>	12.00
TERRAZZA	= m <sup>2</sup>	8.40
VANO SCALA	= m <sup>2</sup>	9.15
CORRIDOIO	= m <sup>2</sup>	7.50
WC UOMINI DONNE	= m <sup>2</sup>	20.00
LAVANDERIA	= m <sup>2</sup>	10.35
<b>TOTALE</b>	<b>= m<sup>2</sup></b>	<b>107.20</b>



**PIANO TETTO 1:100**  
**RISTORANTE IL PARADISO**  
**MAPPALE 633 ORSELINA**

CAMERA ①	= m <sup>2</sup>	14.20
CAMERA ②	= m <sup>2</sup>	10.30
CAMERA ③	= m <sup>2</sup>	20.70
SOGGIORNO	= m <sup>2</sup>	27.10
RIPOSTIGLIO	= m <sup>2</sup>	8.40
VANO SCALA	= m <sup>2</sup>	6.55
CORRIDOIO	= m <sup>2</sup>	5.70
W.C	= m <sup>2</sup>	2.60
<b>TOTALE</b>	<b>= m<sup>2</sup></b>	<b>95.55</b>



22

