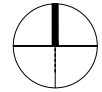
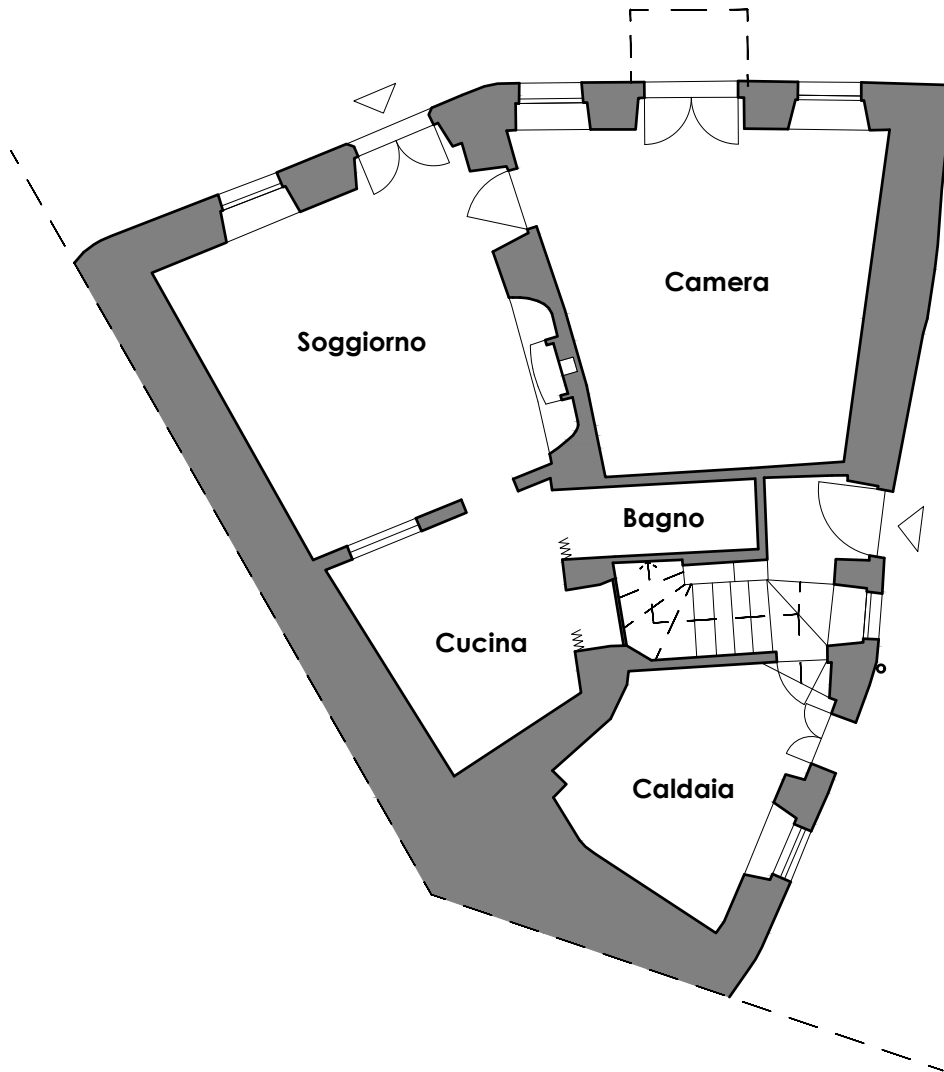


COMUNE DI RIVA SAN VITALE	Incarto: 19'440
PARTICELLA no.: 54	Data rilievo: 11.02.2025
RILIEVO ARCHITETTONICO	Responsabile: E. Gentilini
	Formato: A4/A3
SCALA: 1:100	Data: 26.02.2025

N.	Disegnato	Data	Correzioni - inserimenti
-.-	-.-	-.-	-.-

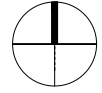


Planimetria piano terra

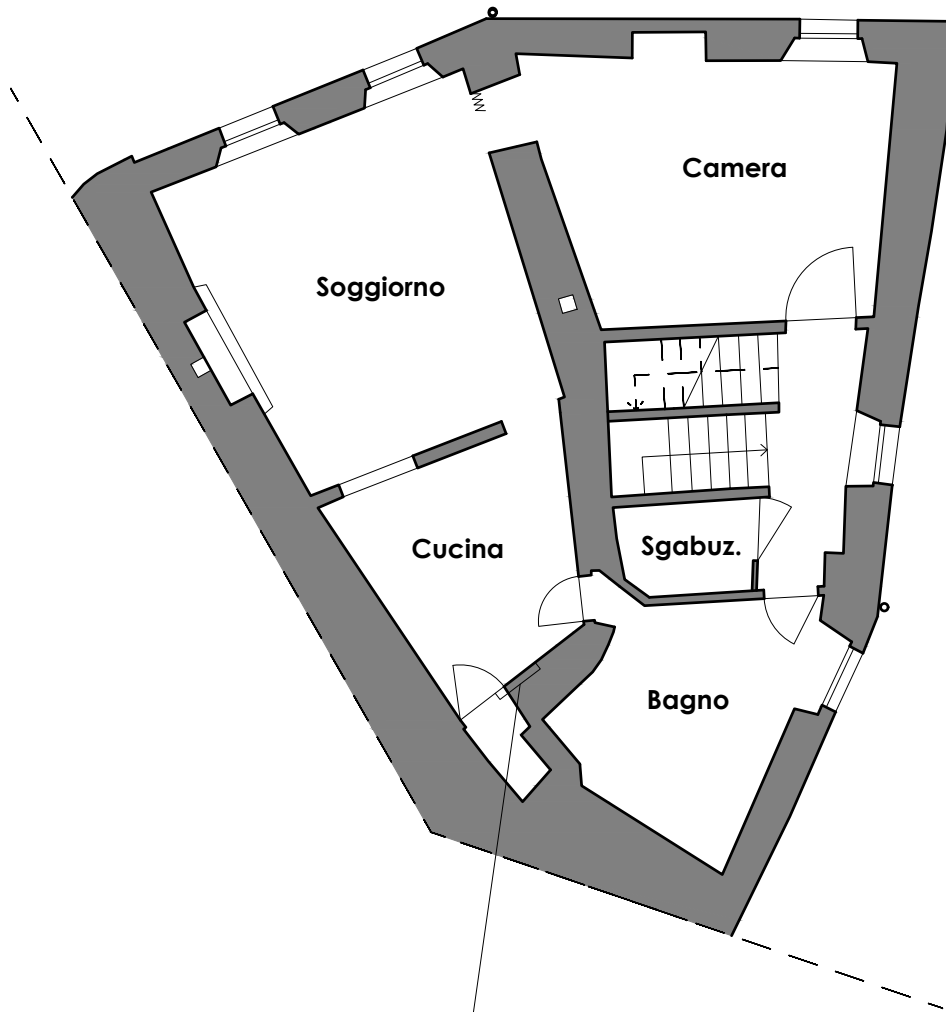


Scala grafica [m]



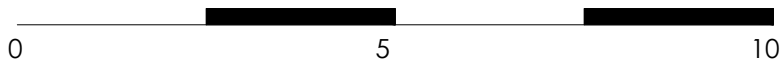


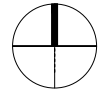
Planimetria piano primo



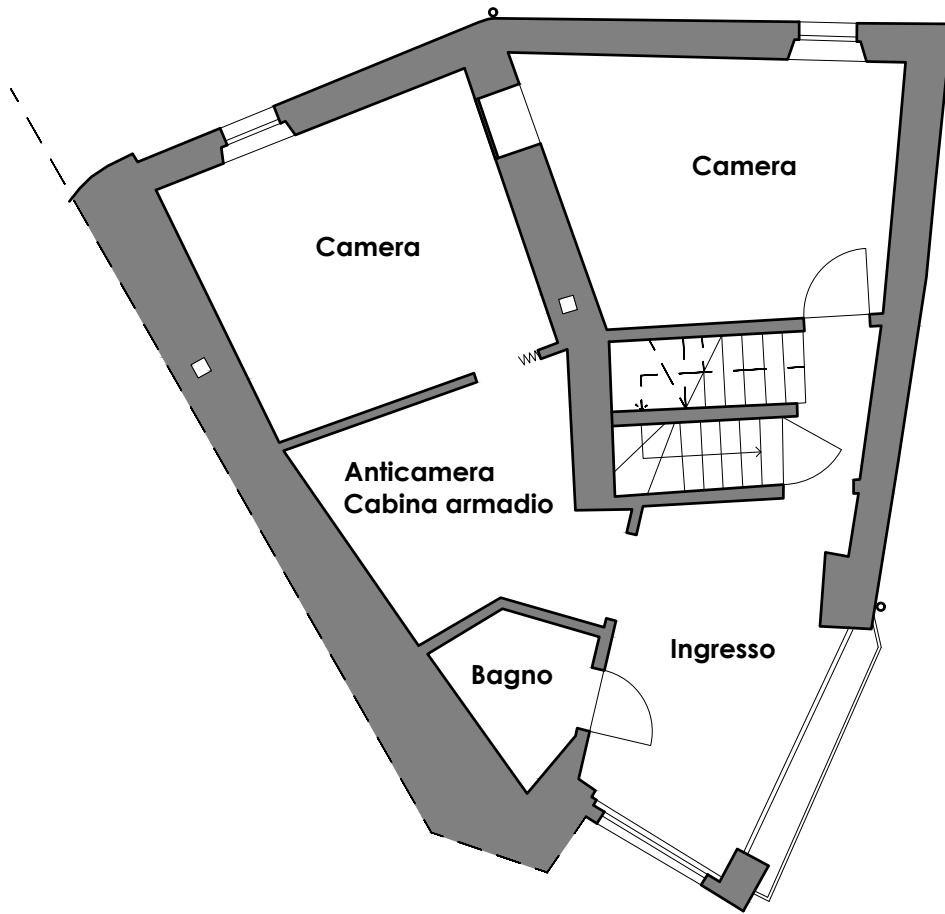
presenza di una piccola finestra al altezza 2.2m

Scala grafica [m]



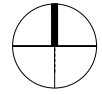


Planimetria piano secondo

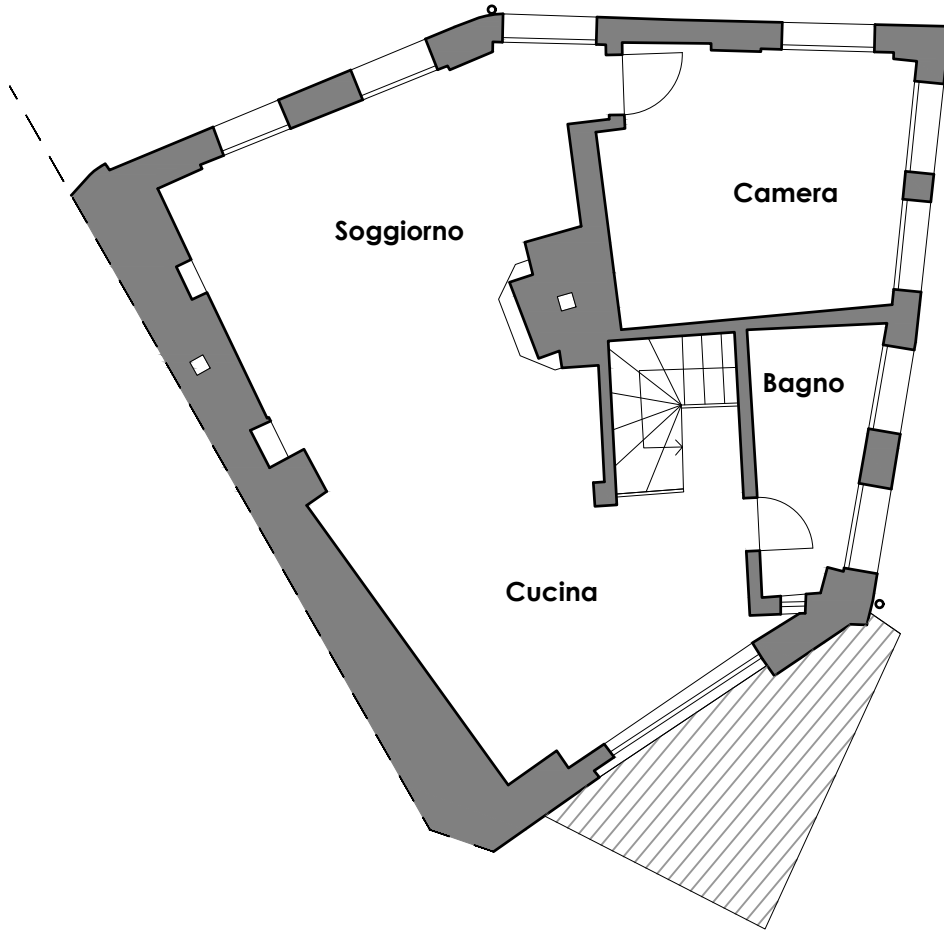


Scala grafica [m]





Planimetria piano terzo



Scala grafica [m]

