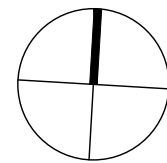
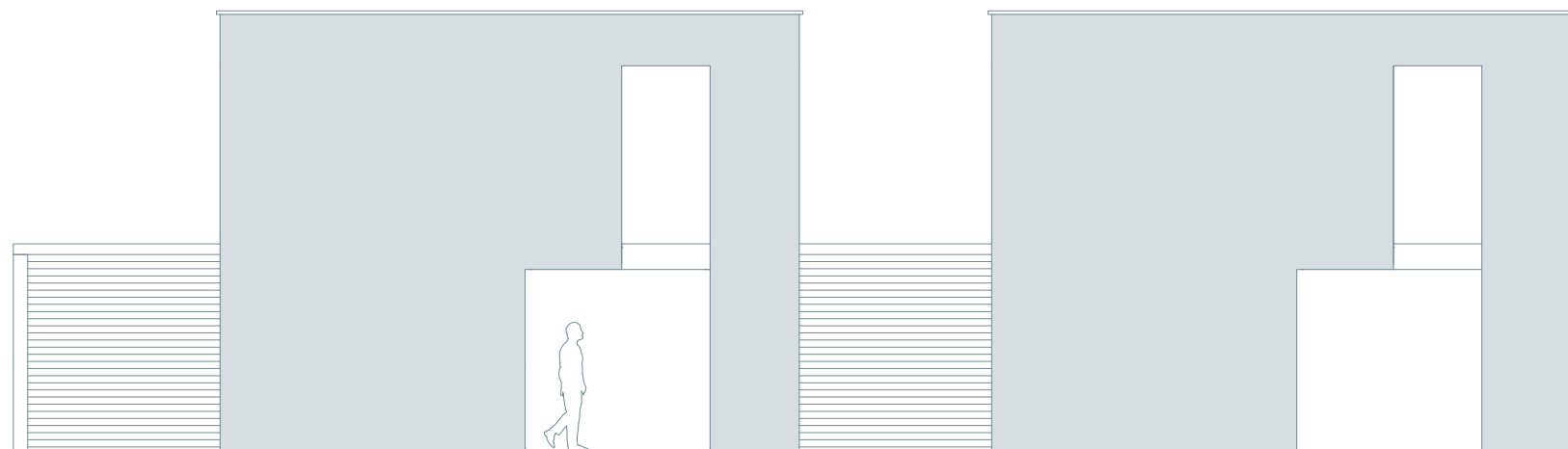


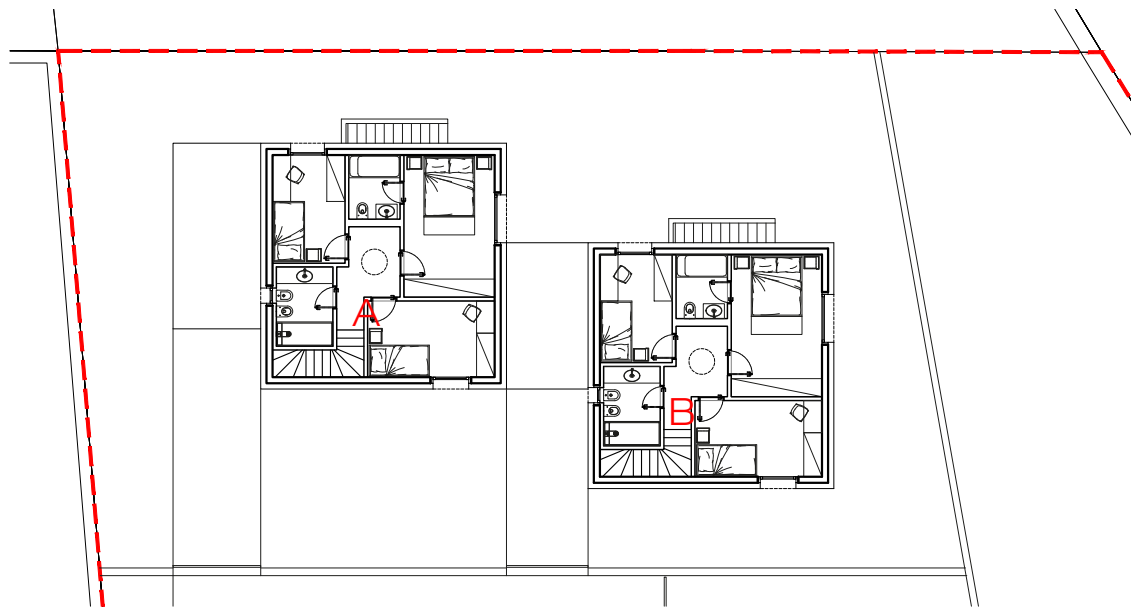
Bifamiliare - mappali 2549 e 2550 - Intragna







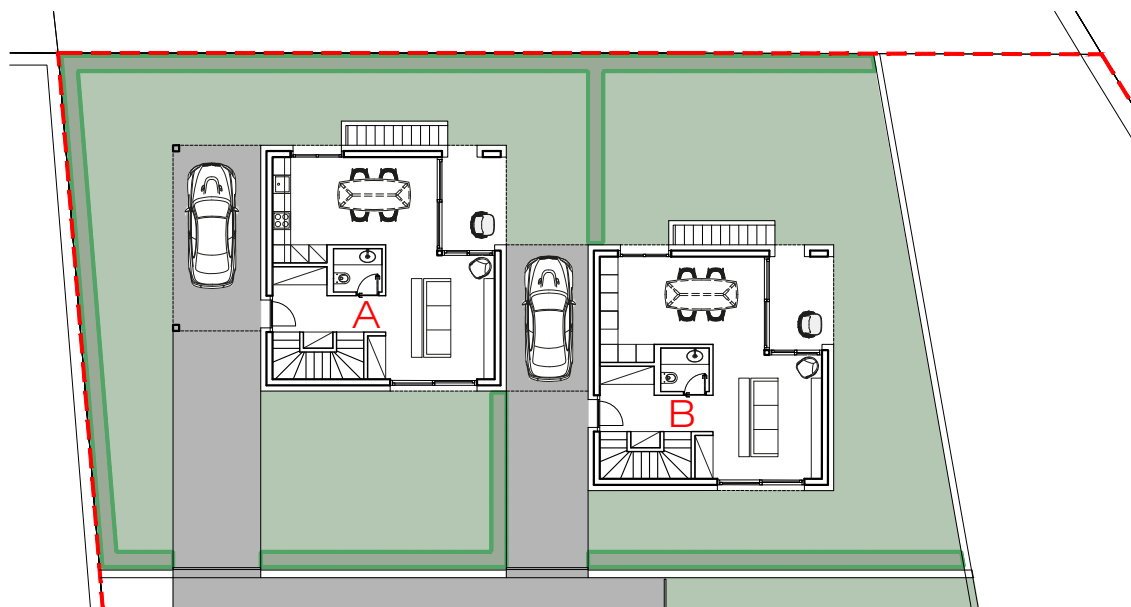
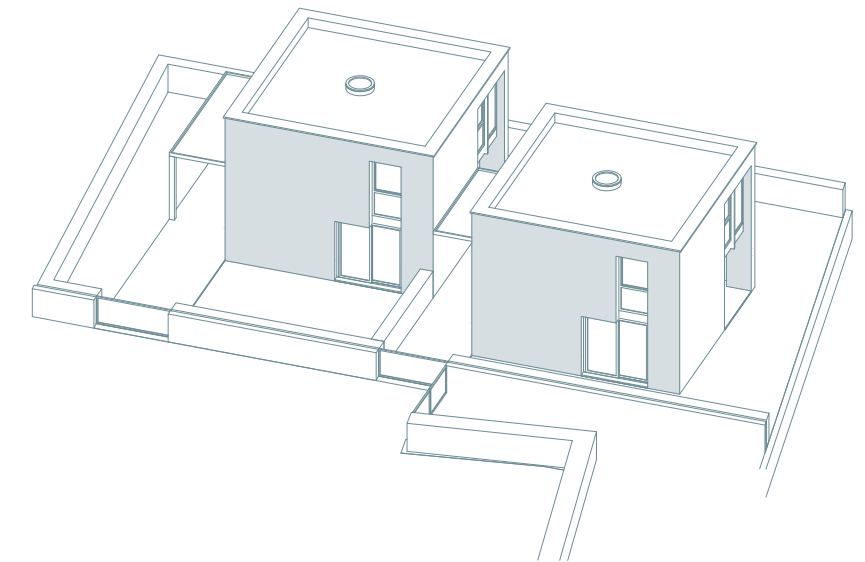
planimetria



Piano Primo - ZONA NOTTE

66 mq (A) + 66 mq (B)

- 3 camere
- 1 bagno su disimpegno
- 1 suite con bagno



Piano Terra - ZONA GIORNO

59 mq (A) + 59 mq (B)

- ingresso
- salotto
- zona pranzo
- cucina
- bagno di servizio
- portico
- posteggio coperto

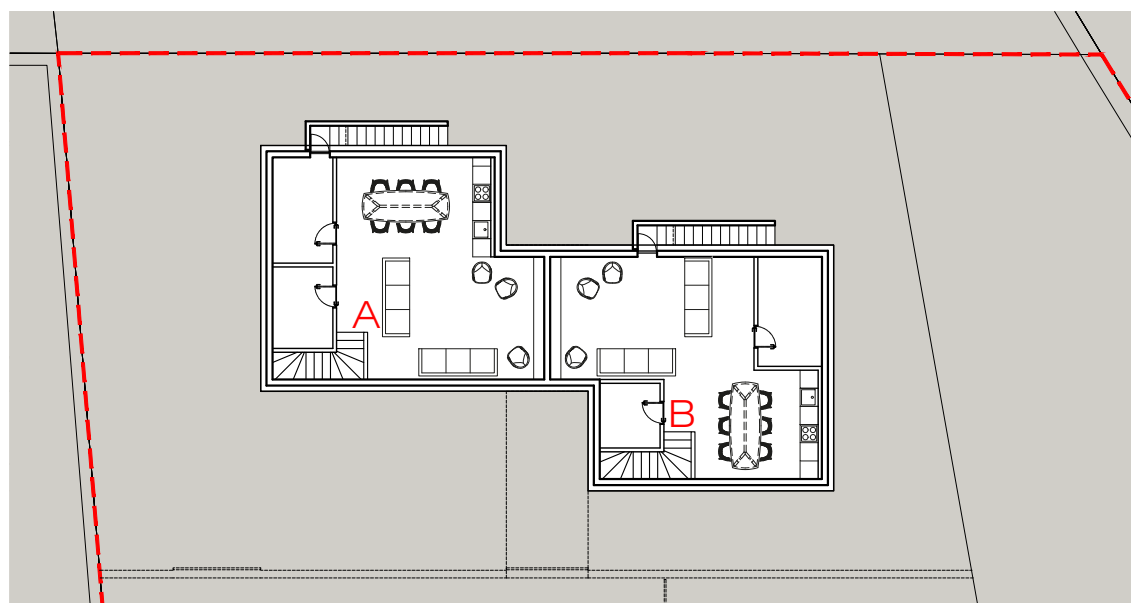
CALCOLO INDICE DI SFRUTTAMENTO

Mappale 2549+2550 = 545 mq + 330 mq
Tot. superficie mappali = 875 mq

875 mq x 0.5 (IS) = 437.5 mq SUL

IN PROGETTO
mq (59 + 66) x 2 = 250 mq

250 mq < 437.5 mq ammessi



Piano Interrato - CANTINA E GROTTINO

72 mq (A) + 72 mq (B)

- 1 cantina
- 1 locale tecnico
- locale grottino

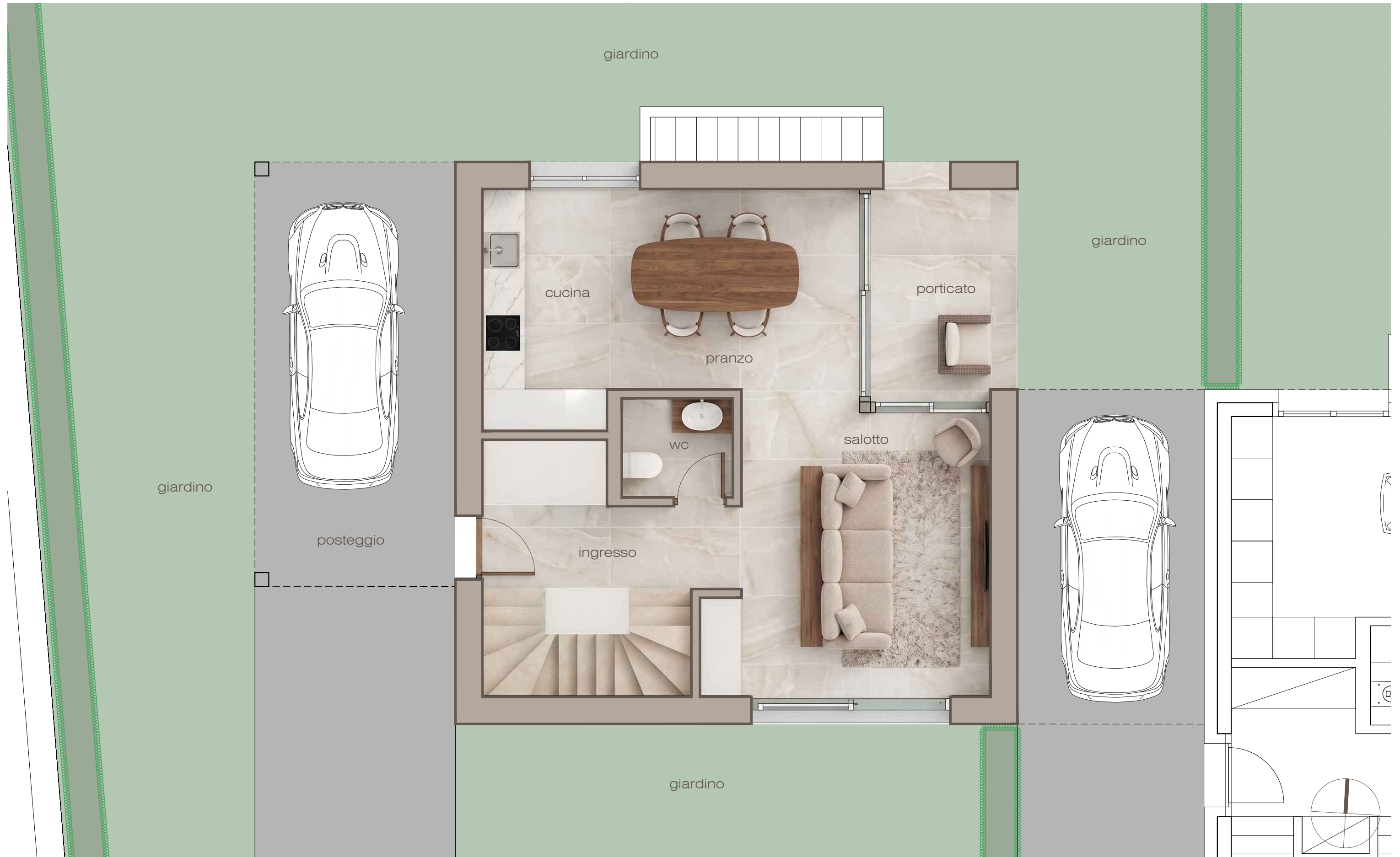
CALCOLO INDICE DI OCCUPAZIONE

Mappale 2549+2550 = 545 mq + 330 mq
Tot. superficie mappali = 875 mq

875 mq x 35 % (IO) = 306.25 mq

IN PROGETTO
mq 83 x 2 = 166

166 mq < 306.25 mq ammessi



giardino

giardino

giardino

posteggio

giardino

cucina

porticato

pranzo

WC

salotto

ingresso

piano terra



piano primo