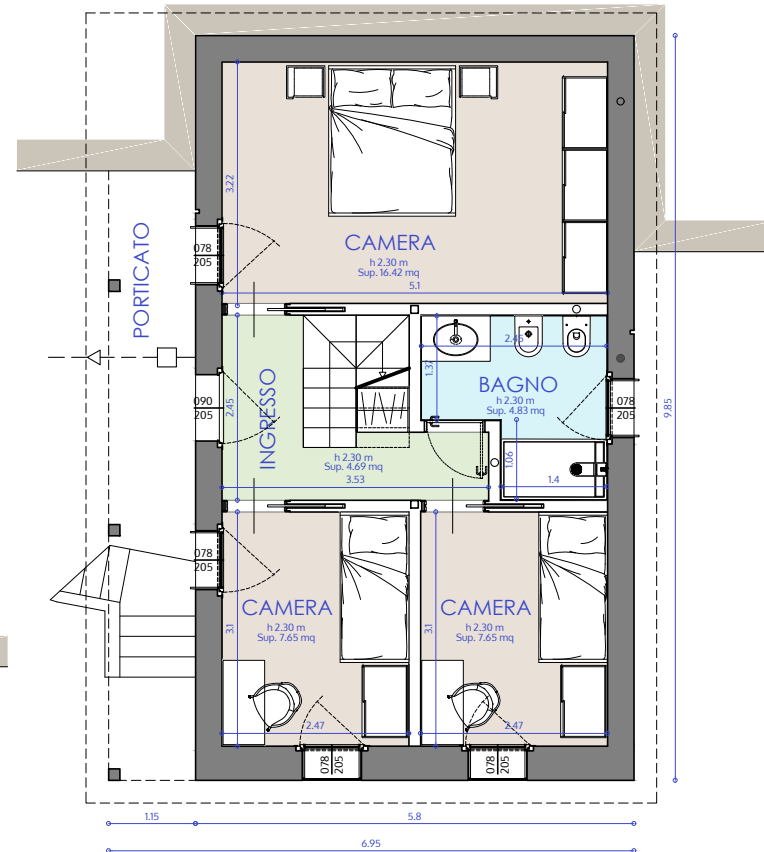
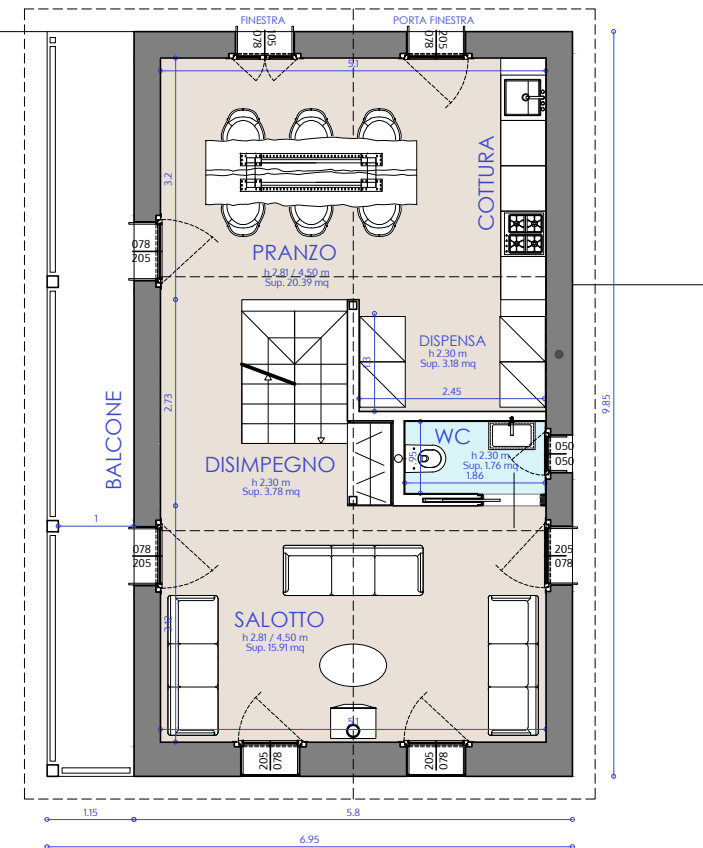


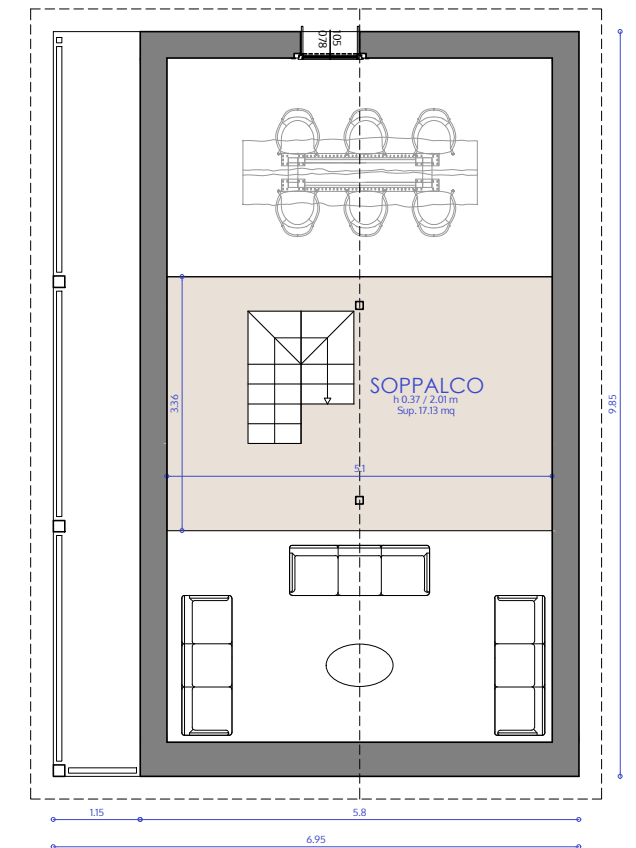
Pianta piano seminterrato, - 2.25 m = 502.71 msm



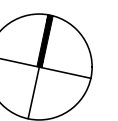
Pianta piano terra, ± 0.00 m = 504.96 msm



Pianta piano primo, + 2.65 m = 507.61 msm

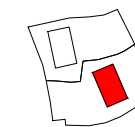


Pianta piano soppalco, + 5.09 m = 510.05 msm



Comune Centovalli - Località Corcapolo

Mappale 1582 - Casa bassa



primm sa

	PIANTE	Piani definitivi	quota - 2.34 m = 508.83 msm
15.04.2026	scala	1:100 dis.	PC DL