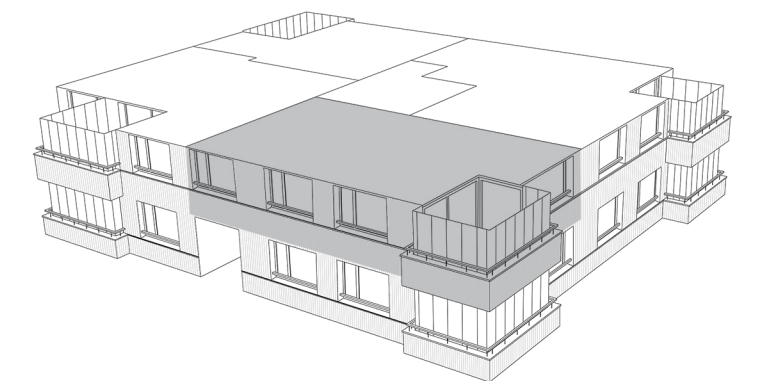
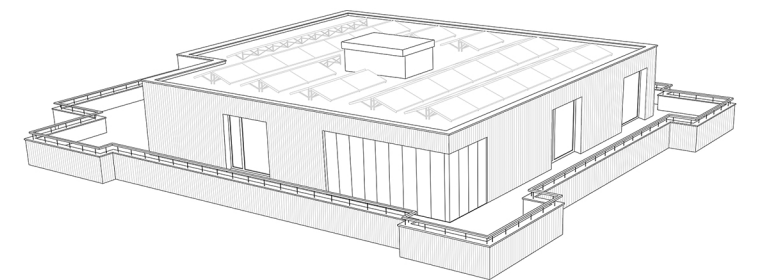
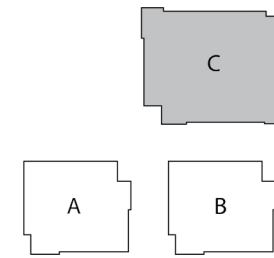
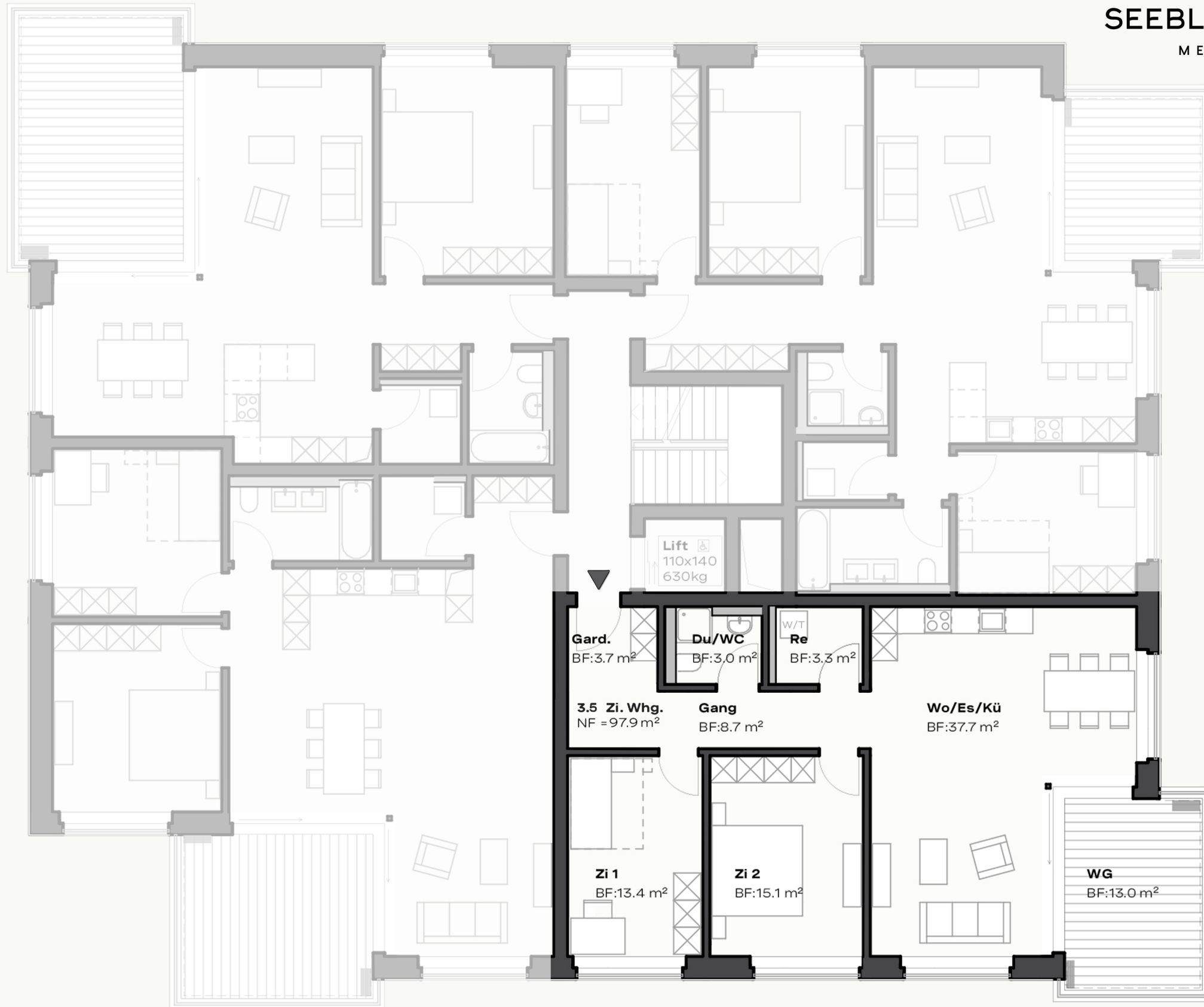




ÜBERBAUUNG
SEEWYDENSTRASSE GOLDACH

SEEBLICK GOLDACH

MEIN ZUHAUSE



Haus	C
Geschoss	Erdgeschoss
Wohnung	Nr. C 2.3
Zimmer	3.5
Nutzfläche	97.90 m ²
Wintergarten	13.00 m ²
Keller	7.80 m ²

