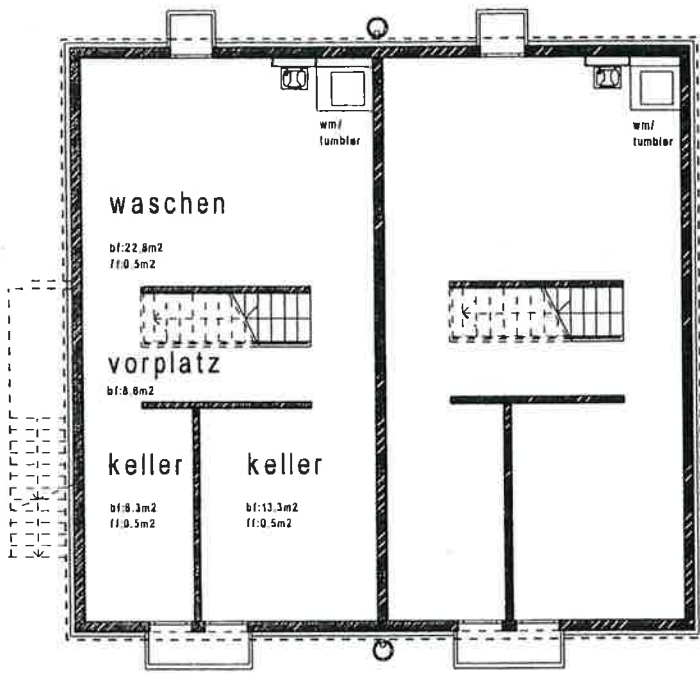
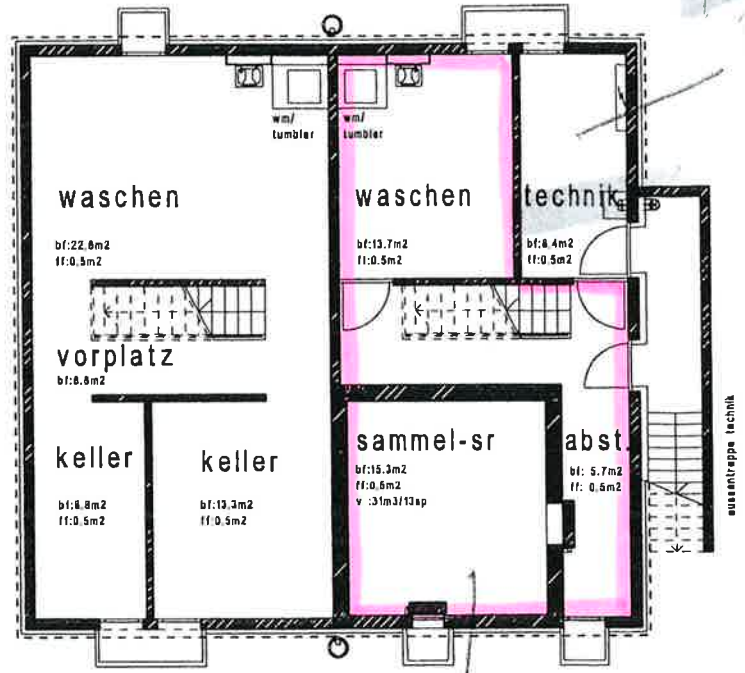


24.96



haus 1

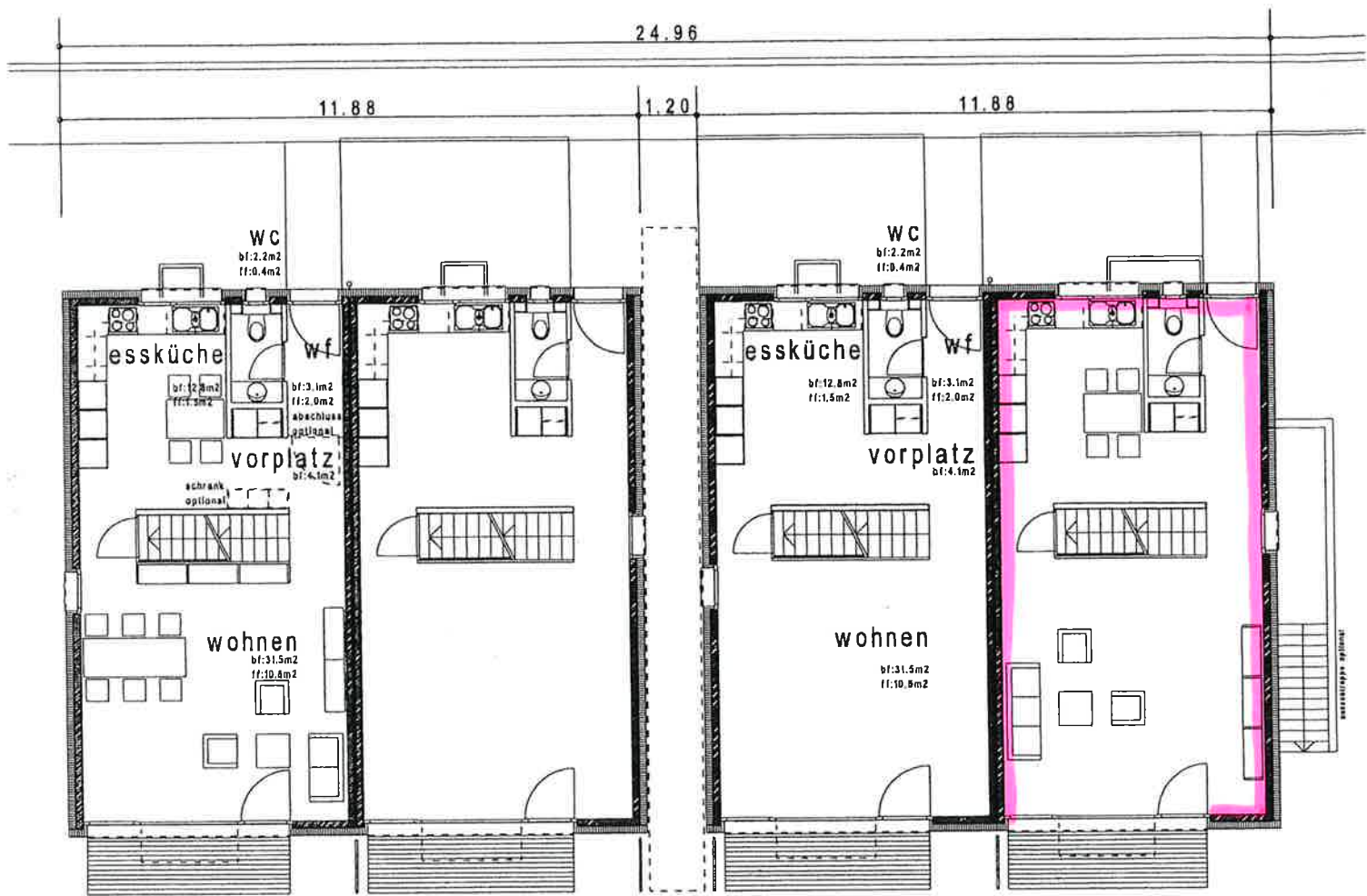


haus 3

haus 4 (technik/schutzraum)

Luftschutz

ok untergeschoss = -0.98



66.53m<sup>2</sup>(brutto pro einheit)

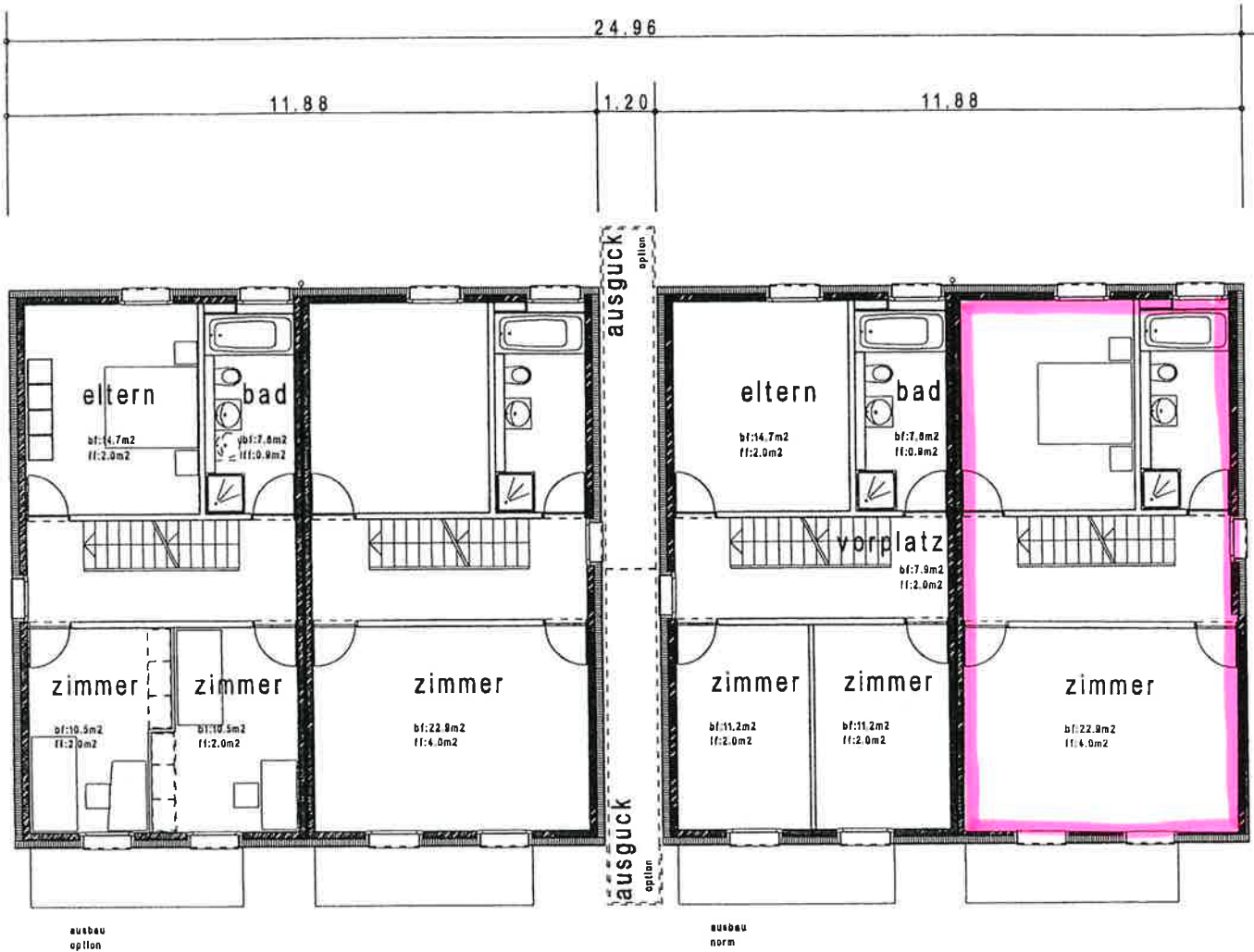
h 1 (max-variante) haus 2

53.70m<sup>2</sup>(netto pro einheit)

haus 3

haus 4

ok erdgeschoss = +1.56



66.53m<sup>2</sup>(brutto pro einheit)

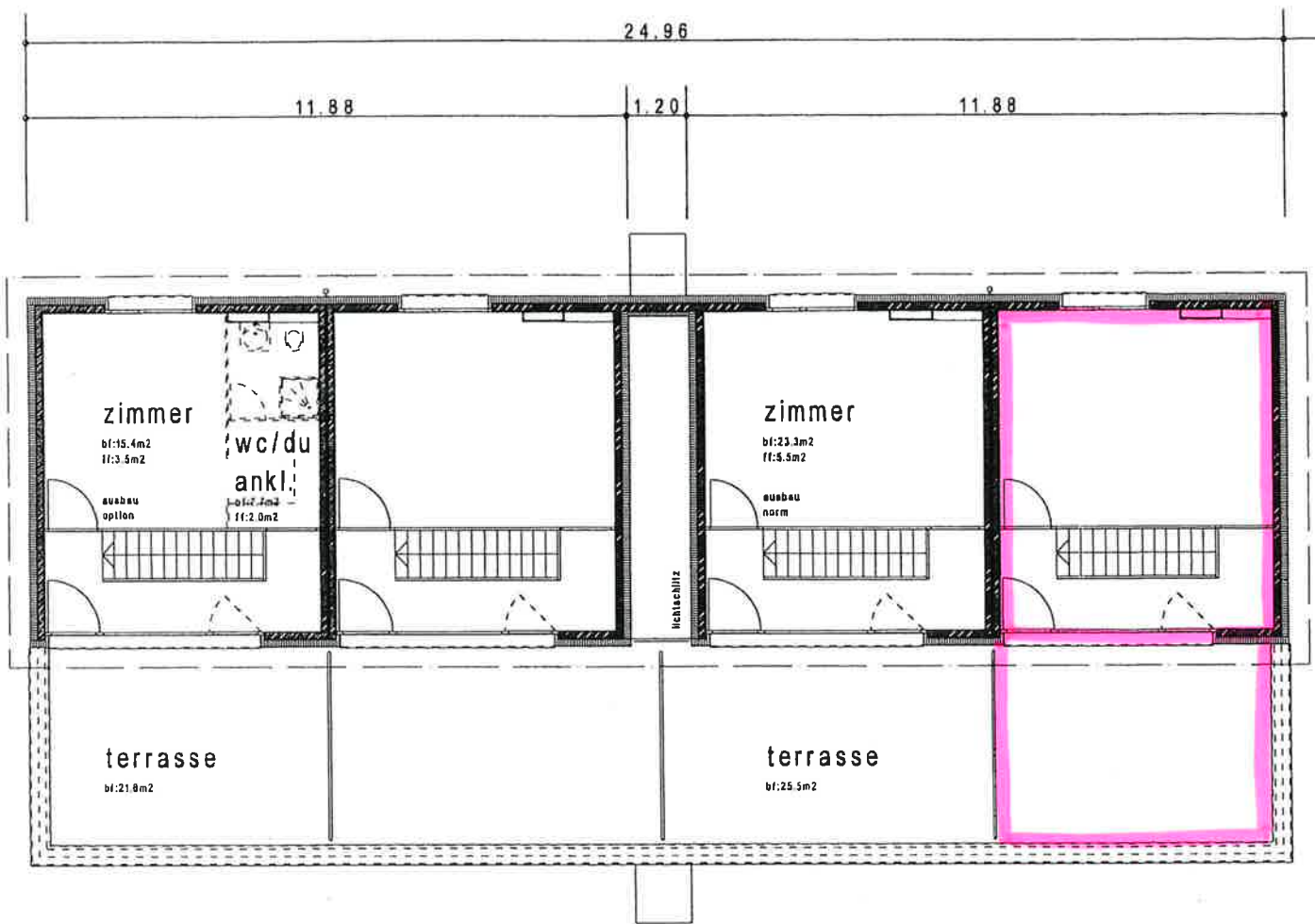
h 1 (max-variante) haus 2

52.60m<sup>2</sup>(netto pro einheit)

haus 3

haus 4

ok obergeschoss = +4.26



66.53m<sup>2</sup>(brutto pro einheit)

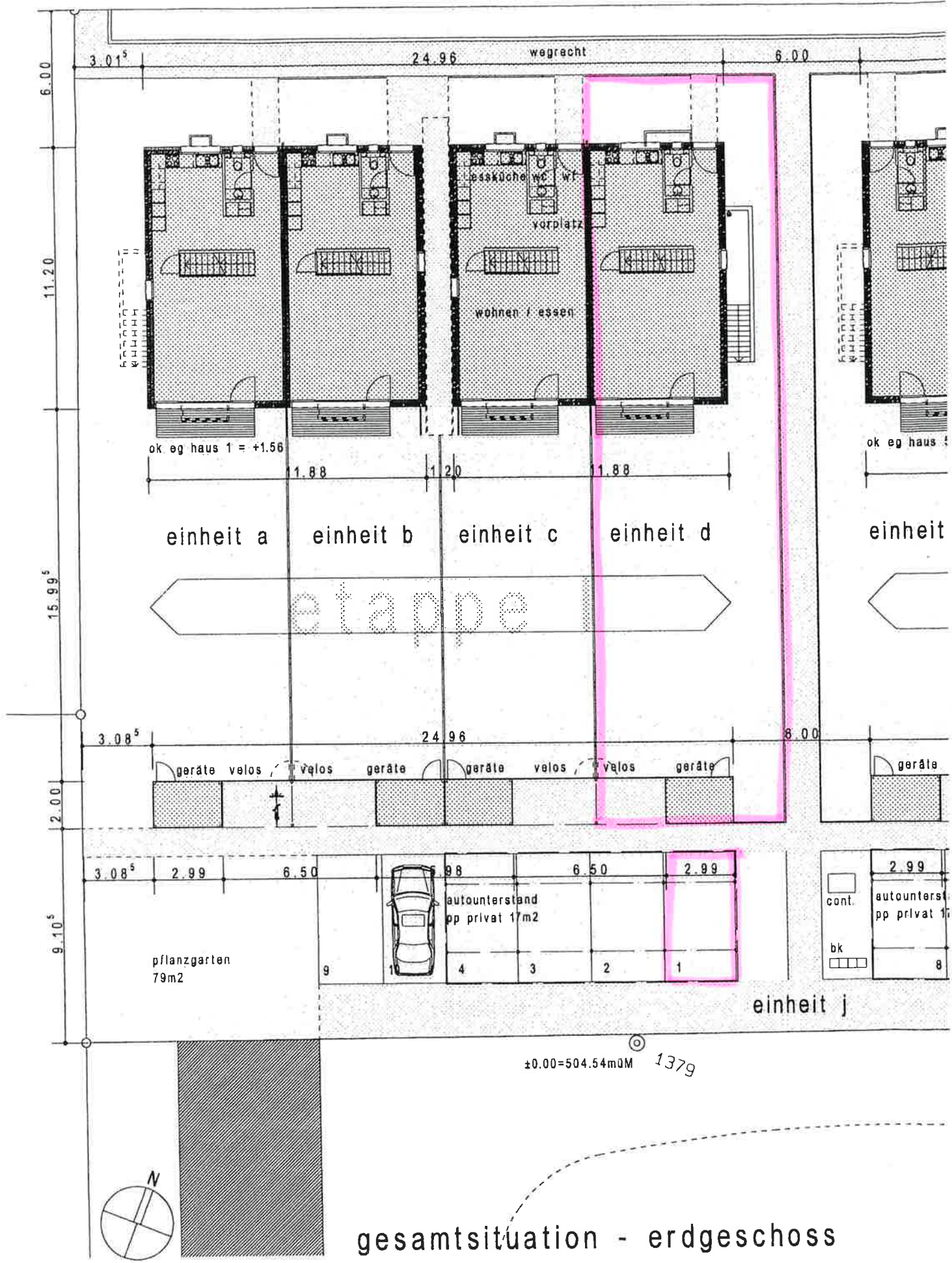
h 1 (max-variante) haus 2

31.20m<sup>2</sup>(netto pro einheit)

haus 3

haus 4

ok attikageschoss = +6.96



gesamtsituation - erdgeschoss