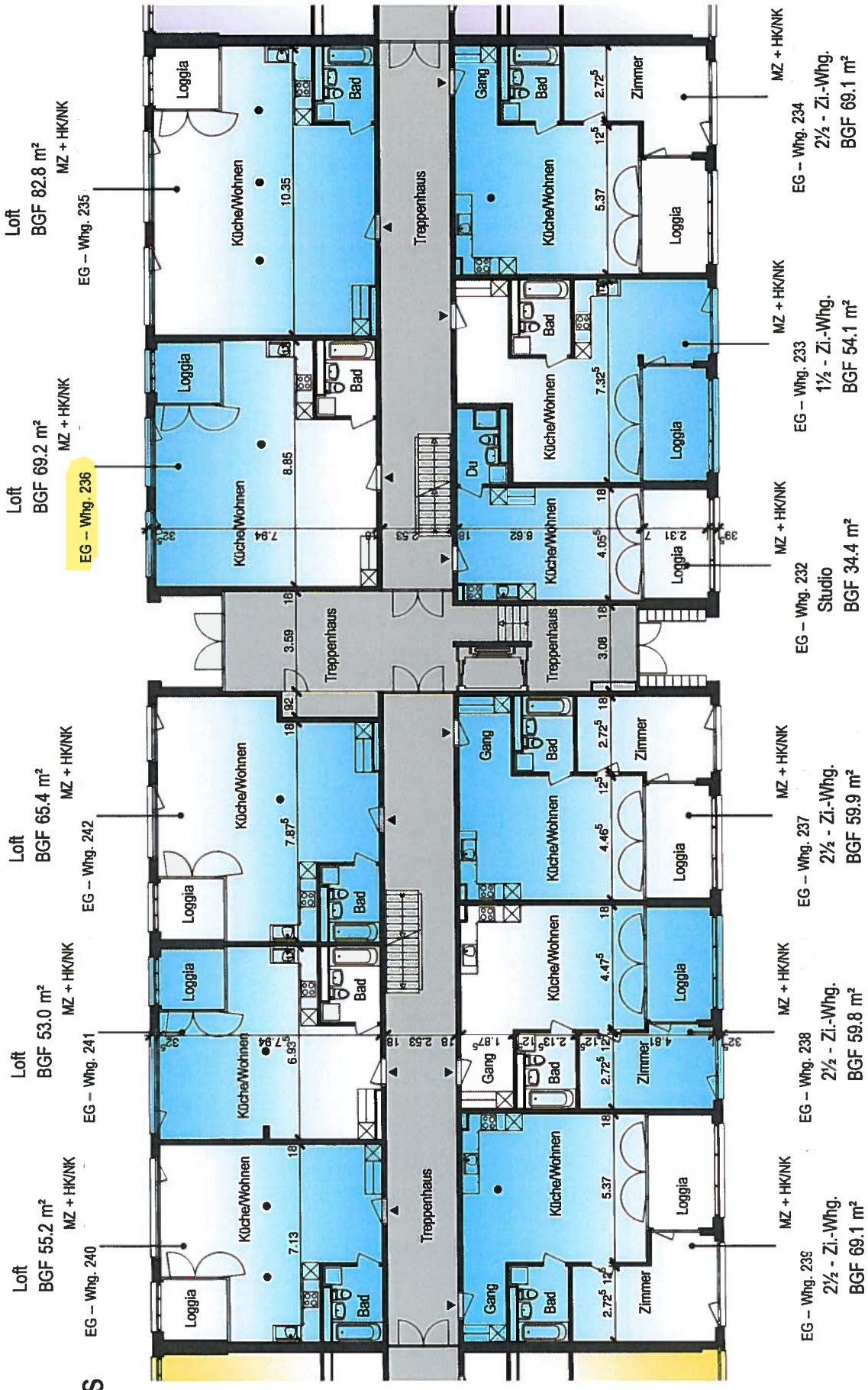


# Mattenstrasse 73

1:200

## Erdgeschoss



MZ + HK/NK  
 EG - Whg. 234  
 2 1/2 - Zi.-Whg.  
 BGF 69.1 m²  
 MZ + HK/NK  
 EG - Whg. 233  
 1 1/2 - Zi.-Whg.  
 BGF 54.1 m²  
 MZ + HK/NK  
 EG - Whg. 232  
 Studio  
 BGF 34.4 m²  
 MZ + HK/NK  
 EG - Whg. 231  
 2 1/2 - Zi.-Whg.  
 BGF 59.9 m²  
 MZ + HK/NK  
 EG - Whg. 230  
 2 1/2 - Zi.-Whg.  
 BGF 59.8 m²  
 MZ + HK/NK  
 EG - Whg. 229  
 2 1/2 - Zi.-Whg.  
 BGF 69.1 m²