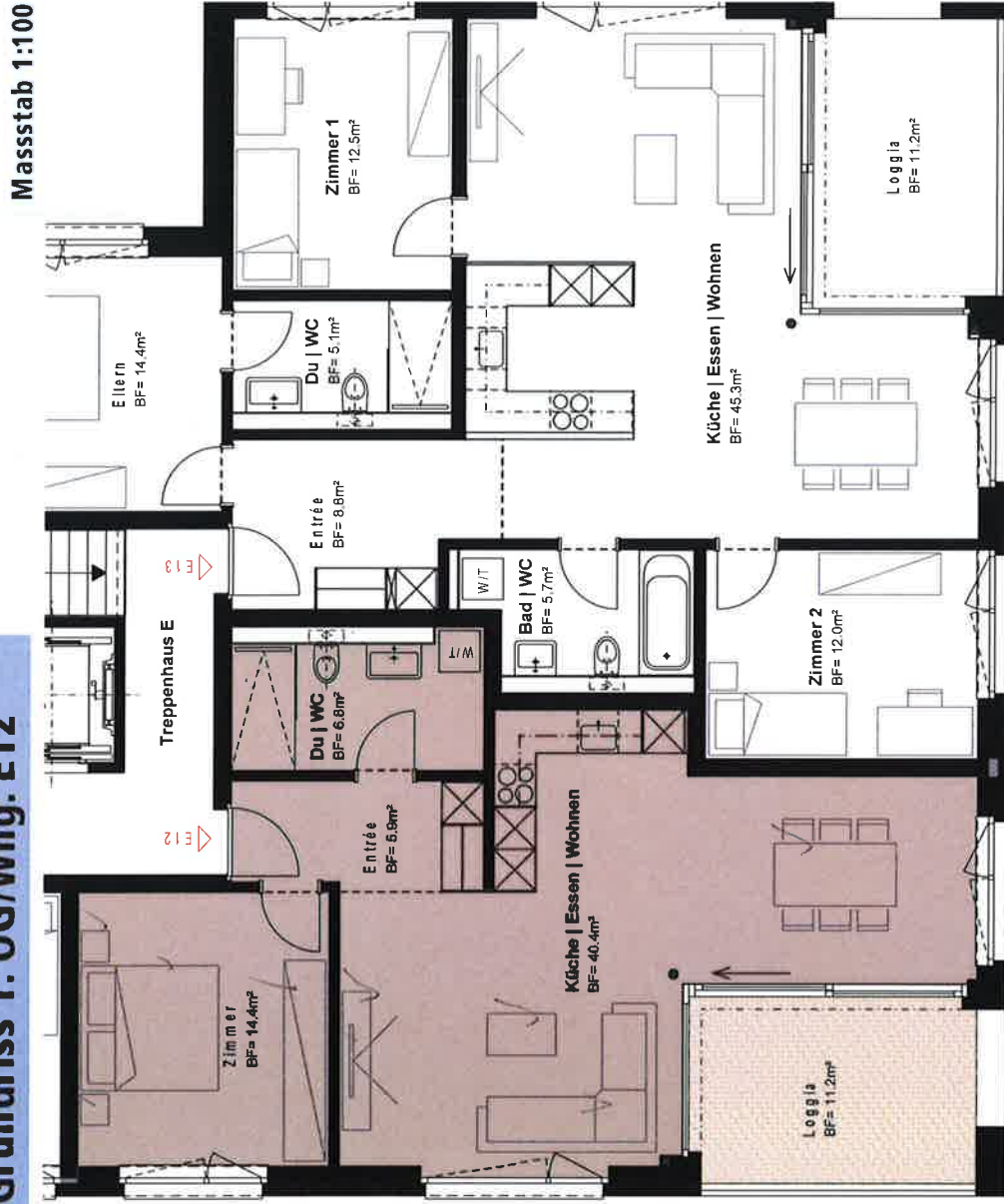


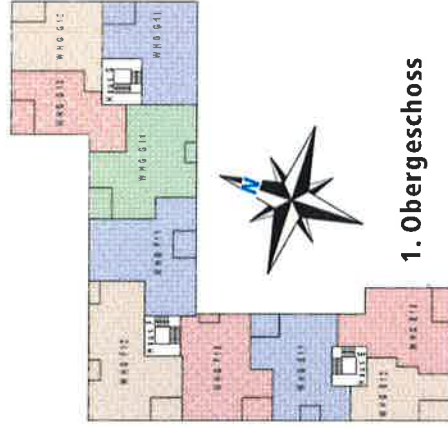
# Salmsacherstrasse 15b | 1. OG

## Grundriss 1. OG/Whg. E12



## 2 1/2-Zimmer-Whg. 67.50 m<sup>2</sup>

Entrée	5.90 m <sup>2</sup>
Küche/Essen/Wohnen	40.40 m <sup>2</sup>
Zimmer	14.40 m <sup>2</sup>
Dusche/WC	6.80 m <sup>2</sup>
Loggia	11.20 m <sup>2</sup>
Keller	9.20 m <sup>2</sup>



## 1. Obergeschoss

*EHP 97*