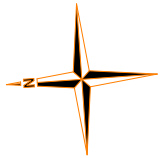
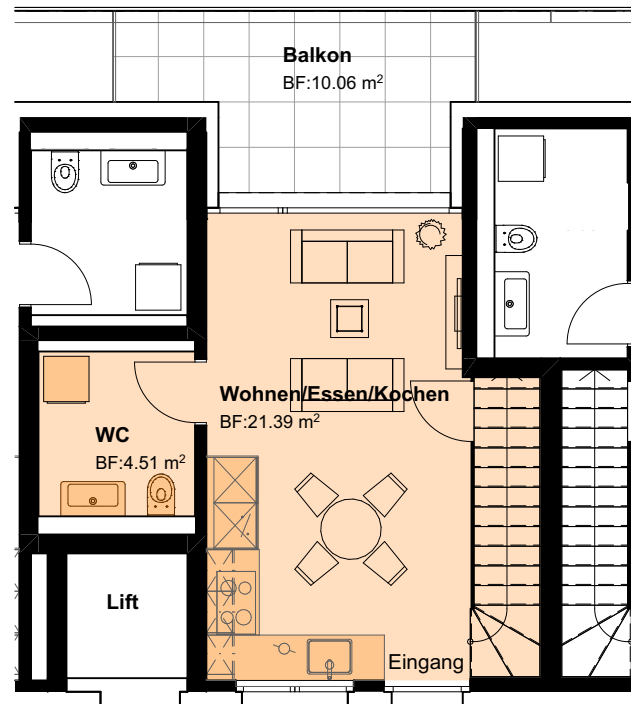


KIRCHWEG 4234 ZULLWIL

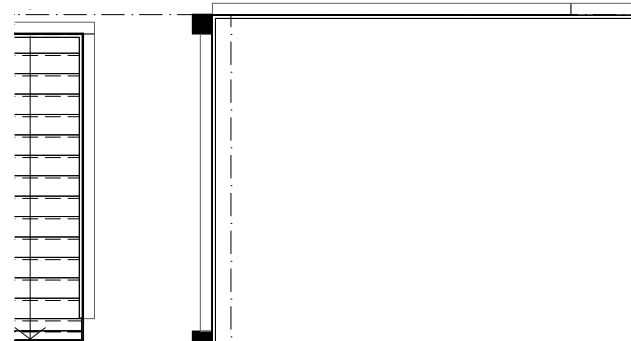


Wohnung A.13

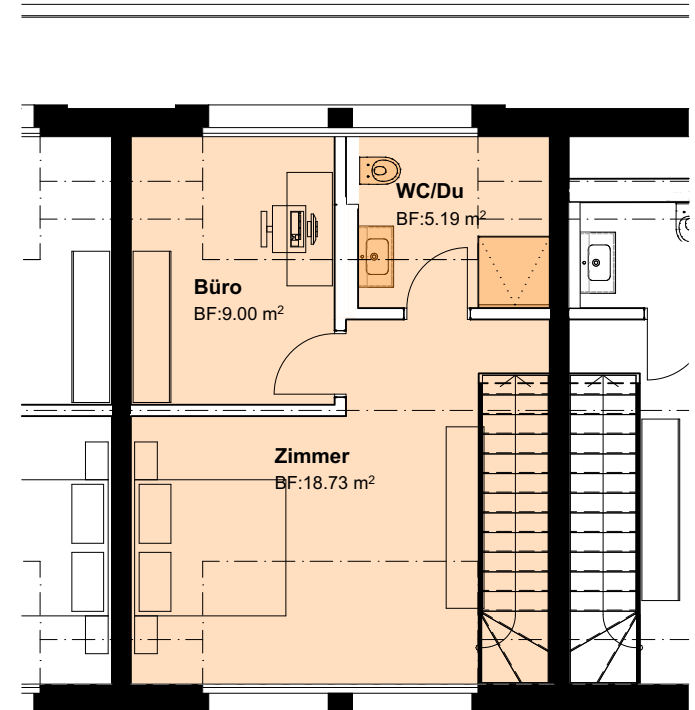
Zimmer	2 1/2
Etage	OG+Attika
Wohnfläche bis 1.5m	58.82m ²
Massstab	1:100
Vermietung ab	01.10.2026
Miete/Mt:	1'150.-
NK/Mt:	200.-



Laubengang



Obergeschoss



Dachgeschoss