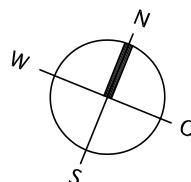
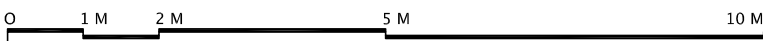
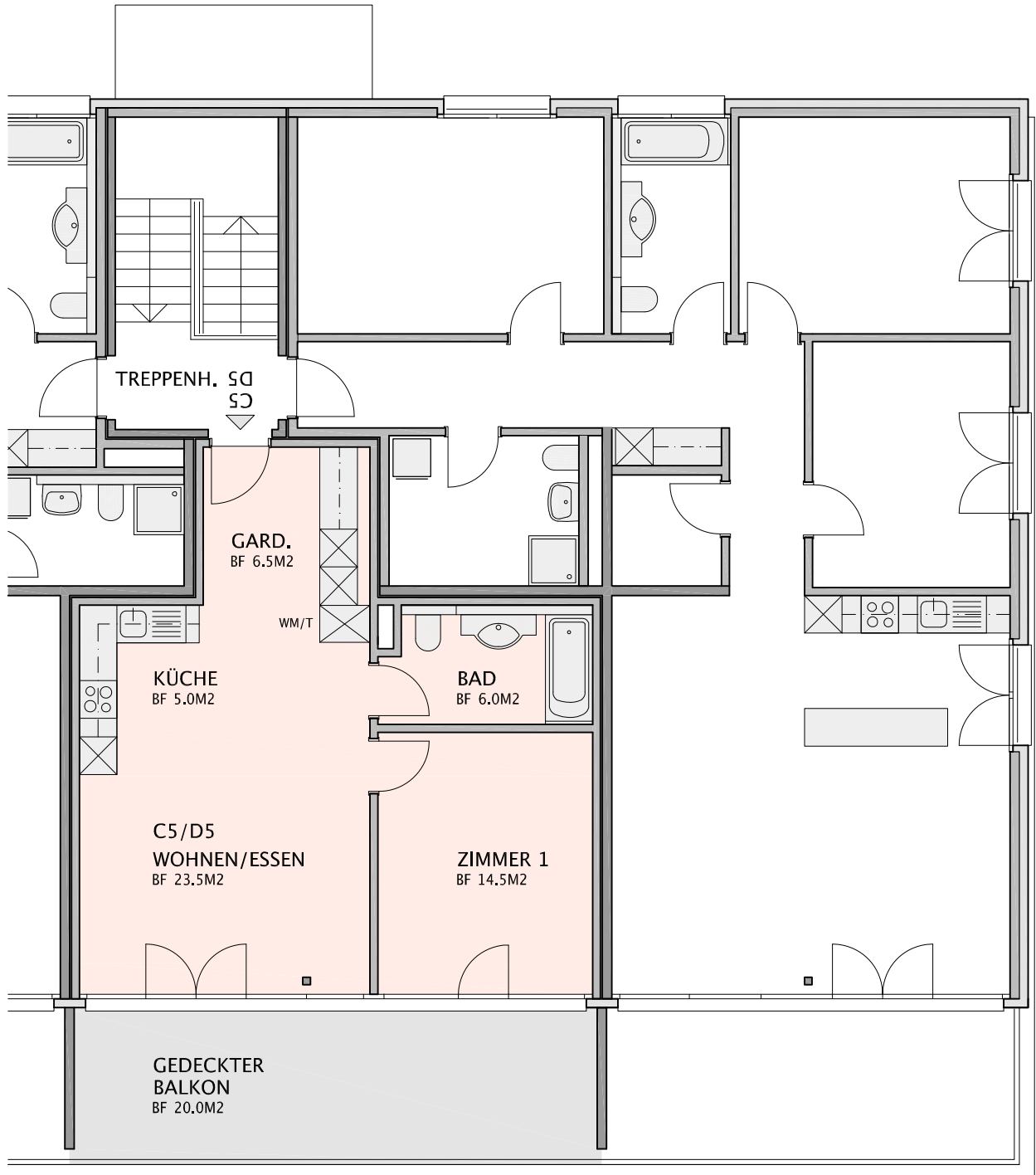


C4/D6	C5/D5	C6/D4
C1/D3	C2/D2	C3/D1
KELLER		

NEUBAU 4 MFH MIT ESH/PIETERLEN  
GEBÄUDE C+D / 2.5 ZIMMER

WOHNUNG C5/D5  
WOHNFLÄCHE 55.5 M2  
GEDECKTER BALKON 20.0 M2

OBERGESCHOSS



MASSTAB 1:100